



# Jensen CD Player Electric Motor Wire Replacement

Written By: Garrik Kaufman



## INTRODUCTION

This guide will explain how to resolder the electric motor wire placed inside a CD player. Resoldering the wire increases the chance of spinning the CD stuck inside the player.



### TOOLS:

- [64 Bit Driver Kit](#) (1)
  - [Soldering Iron](#) (1)
-

## Step 1 — Electric Motor Wire



- Place the CD player face up on a clean surface.

## Step 2



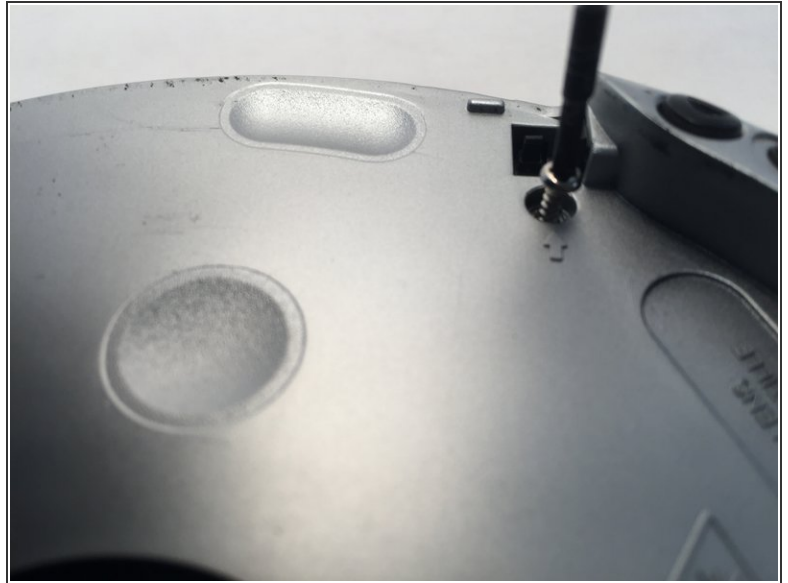
- Upturn the CD player and take out the batteries.
  - To take out the batteries, pull back and lift the battery cover.
- ⚠ Ensure that the batteries are properly removed, at this step.

### Step 3



- Flip the CD player back and open the lid. You will see two 10 mm Phillips screws on the left and right side under the lid.
- To open the lid, push the button on the far right with an ejection symbol. Once the button is pushed, carefully lift the lid.

## Step 4



- Unscrew each 10 mm Phillips screw with the screwdriver, and place them outside safely.

☑ Note the order in which you took the screws out.

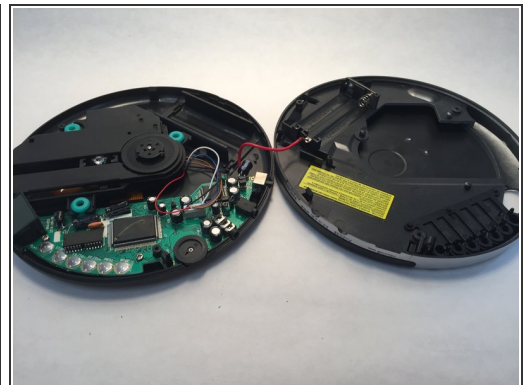
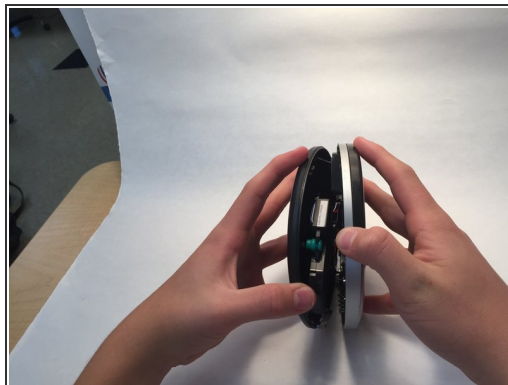
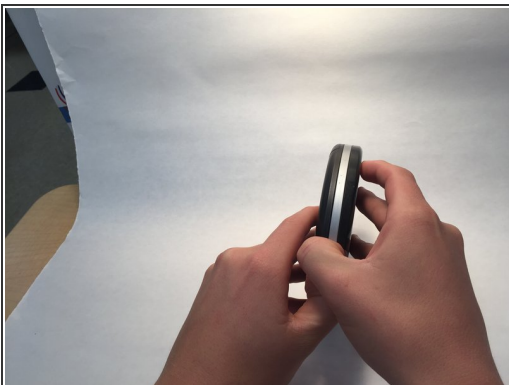


## Step 5



- Turn the CD player upside down and open the battery compartment. You will see one more 10 mm Phillips screw inside. Unscrew it.
- Use the Phillips screwdriver to remove the screw. Place the screw outside safely.

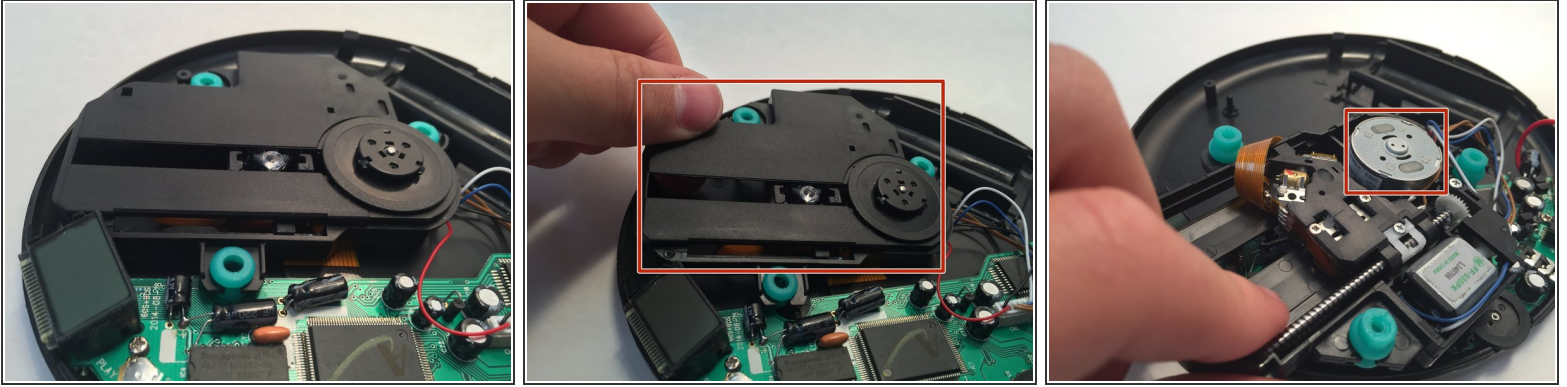
## Step 6



- Now, open the CD player, and check the components inside.

⚠ Be careful as this step requires some force.

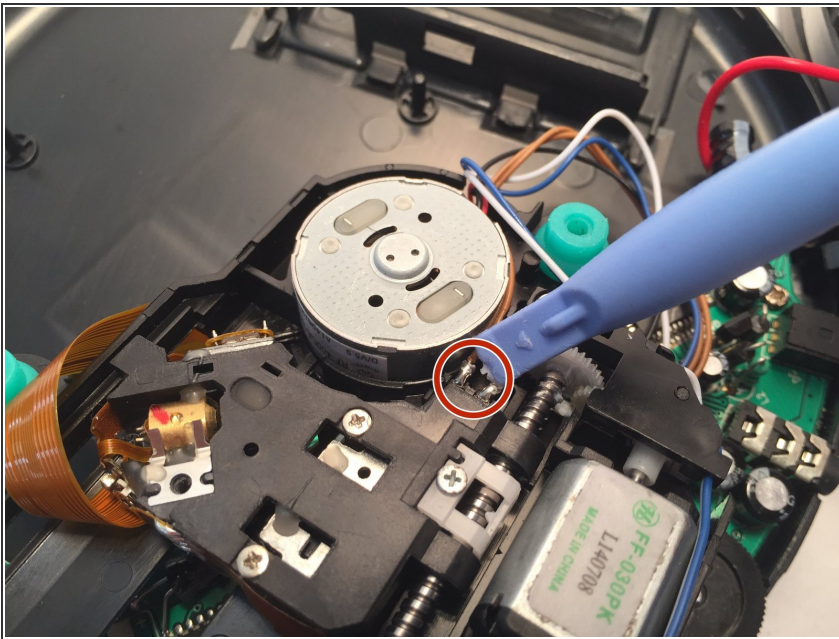
## Step 7



- Locate the motor on the bottom portion of the CD player. Lift the motor up and turn it over.

⚠ Operate the motor carefully, since it is still connected to some wires.

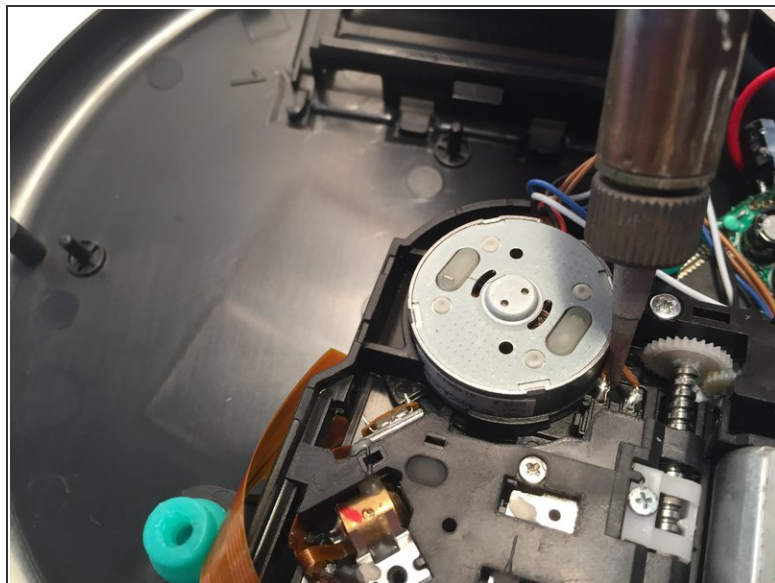
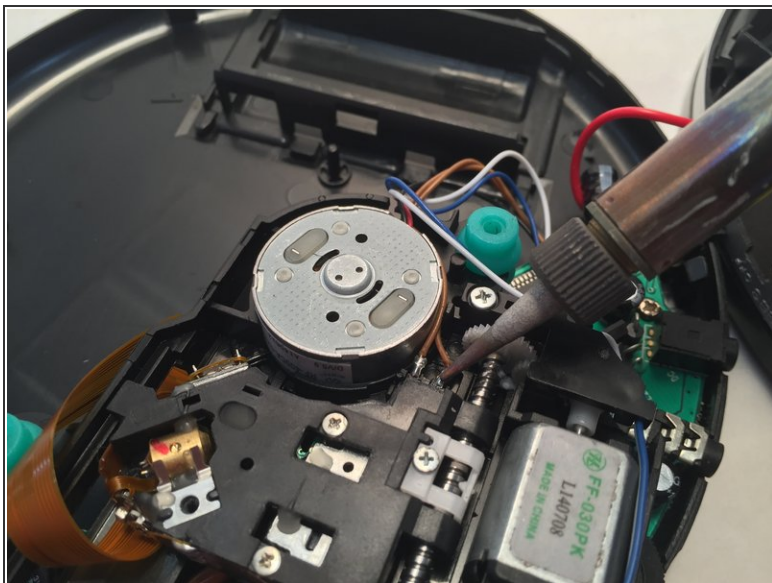
## Step 8



- Locate these two small wires.

ⓘ Check whether both the wires are connected to the electric motor. If not, that is a probable reason why the CDs are not spinning once the device is turned on.

## Step 9



- Resolder the disconnected wires. This is a lengthy procedure.
- ⚠ Be cautious, as the soldering iron is hot and may cause skin burns.
- ⚠ Make sure to wash your hands after dealing with the solder.

To reassemble your device, follow these instructions in reverse order.