



# John Frieda JFHA5R Reset and Test Buttons Replacement

This guide will show you how to replace the John Frieda JFHA5R reset and test buttons on the power plug.

Written By: Lindsey Farley



## INTRODUCTION

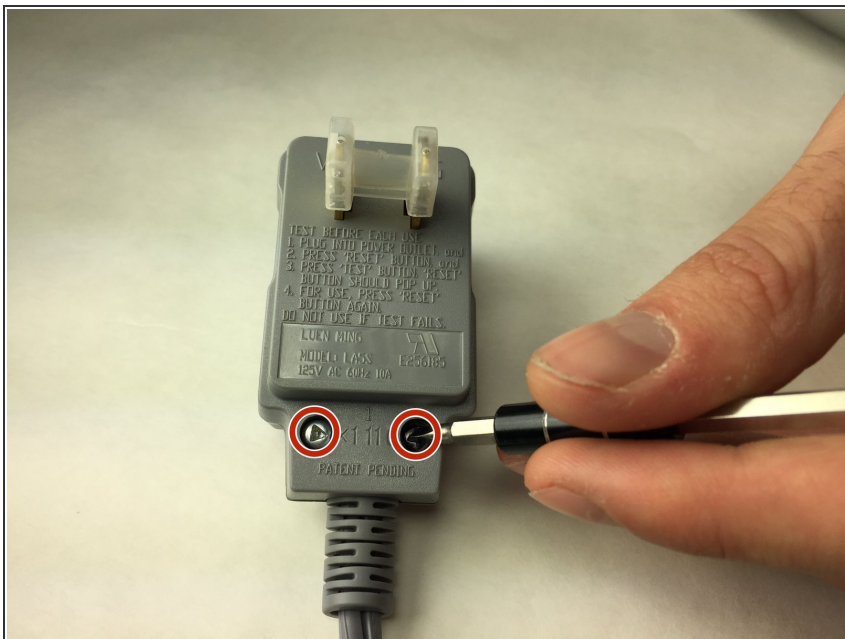
The reset and test buttons can stop working over time. This replacement guide will show how to properly replace the reset and test buttons.

---

### TOOLS:

- [Spudger](#) (1)
  - [4mm Nut Driver](#) (1)
  - [4mm Aluminum Screwdriver](#) (1)
  - [64 Bit Driver Kit](#) (1)
-

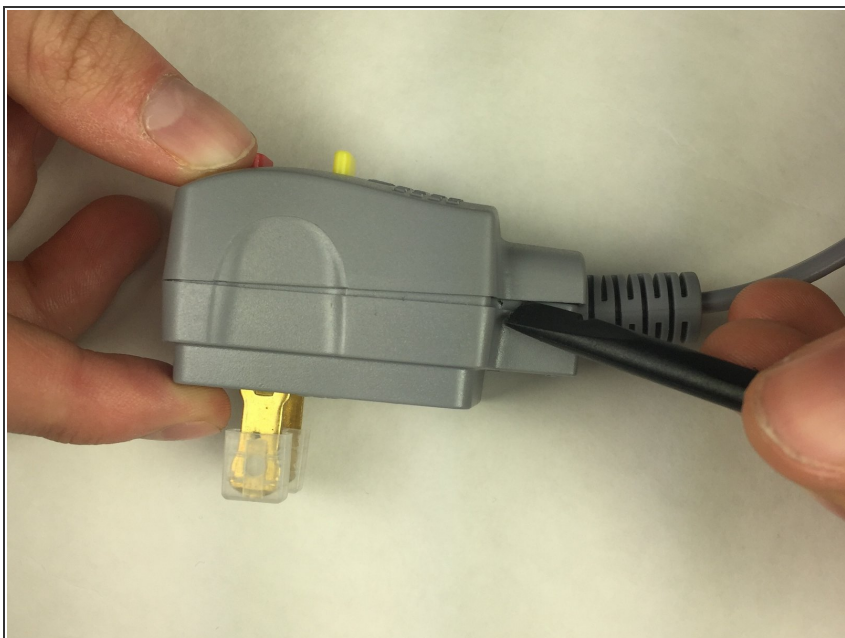
## Step 1 — Reset and Test Buttons



⚠ Make sure the Salon Shape brush is unplugged, and do not use metals once you have pried open the power plug.

- Unscrew the two screws using a 3.0 mm bit triangle head on the back of the power plug.

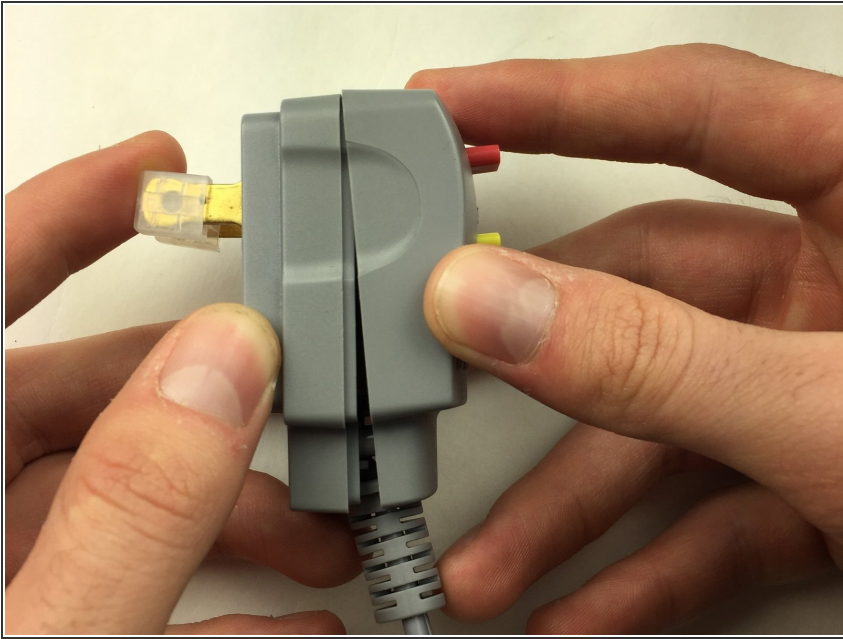
## Step 2



- Use the spudger along either side to open up the power plug.

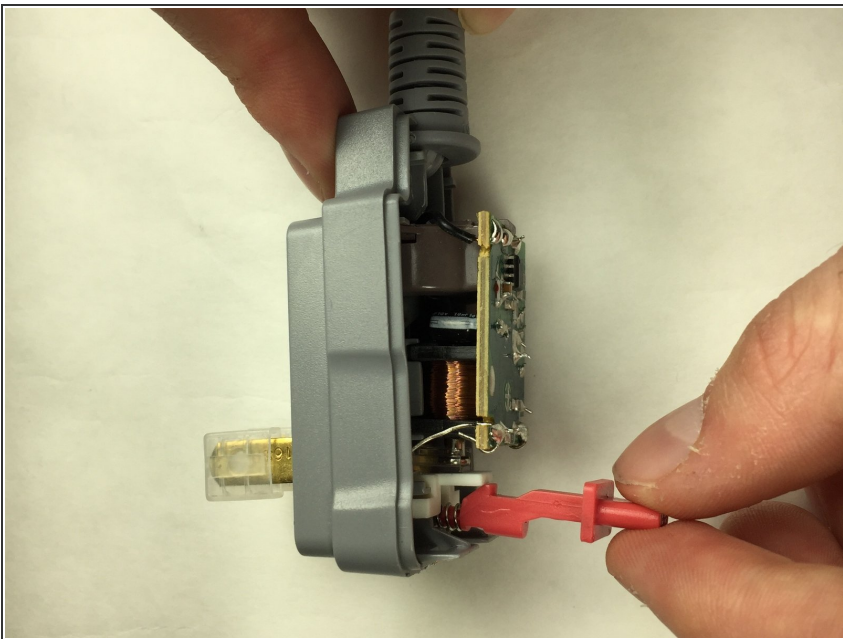
⚠ As the power plug is opened, the caution sticker on top of the plug will rip.

### Step 3



- Slide slightly up to remove the back cover of the power plug.

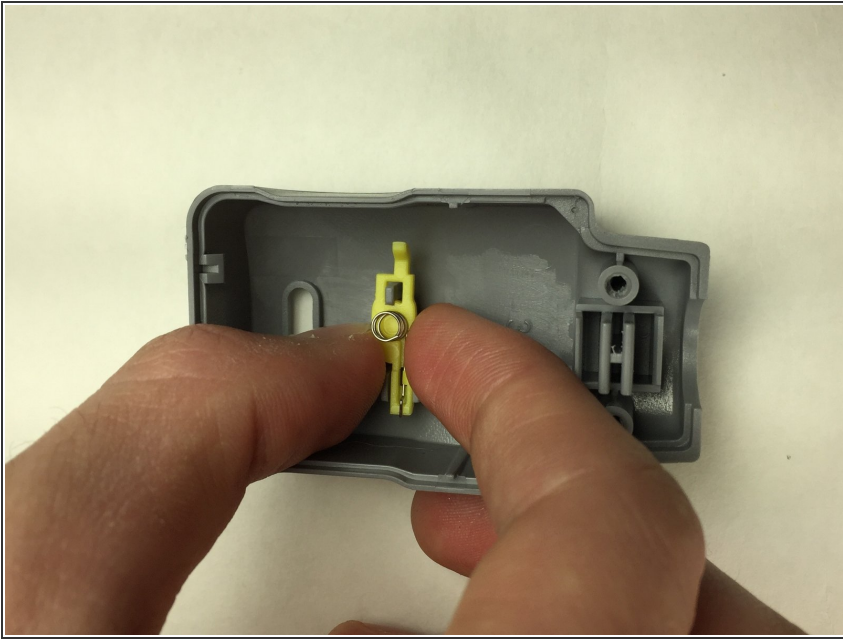
### Step 4



- Remove the red reset button by pulling it to the right.



## Step 5



- Pull slightly left then up to remove the yellow test button.

To reassemble your device, follow these instructions in reverse order.