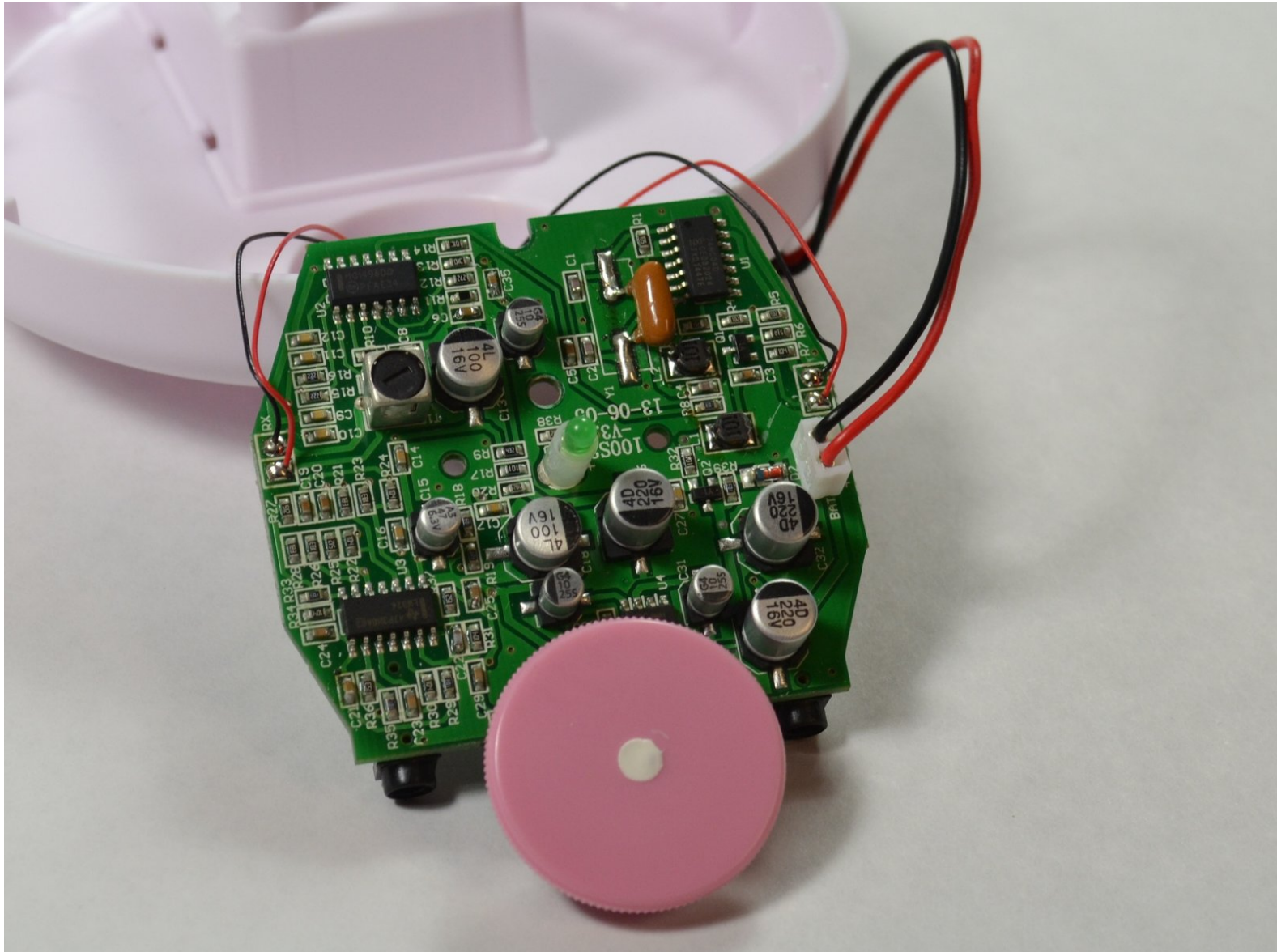




Jumper Angelsounds JPD-100S Battery Cable Replacement

This guide will teach you how to replace the battery cables on the device.

Written By: Safiyah Junaid



INTRODUCTION

You will need knowledge of how to use a soldering iron station. For more information regarding soldering visit: [Soldering Skills](#)

During the replacement of the battery cables, you will locate the battery cables on motherboard, unsolder the battery cable leads from the motherboard, and remove the battery cables.



TOOLS:

- [Phillips #1 Screwdriver](#) (1)
 - [iFixit Opening Tools](#) (1)
 - [Spudger](#) (1)
 - [Soldering Iron](#) (1)
 - [Solder Vacuum](#) (1)
-

Step 1 — Motherboard



- Access the battery compartment
- Remove the battery compartment lid and set it aside.
- Disconnect the battery and set it aside.

Step 2



- Puncture the sticker in the battery compartment with a spudger to access the screw beneath it.

Step 3



- Remove the 7mm Phillips #1 screw from the battery compartment.
- Place the screw in a secure place.

Step 4



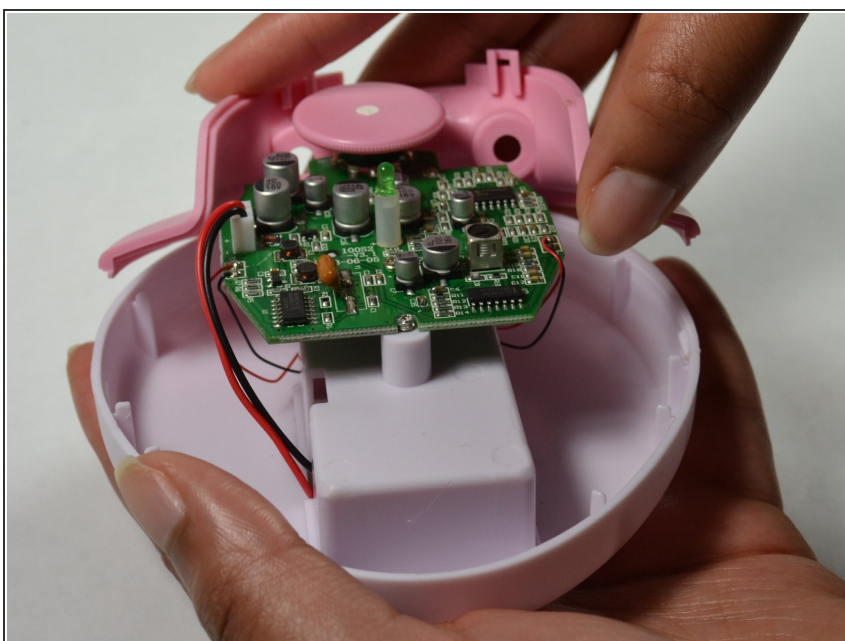
- Begin prying open the device.
 - Insert a plastic opening tool into the side groove about 2cm from the pink plastic component and pry open one side of the device.
 - Once the side is separated, leave the opening tool inside to prevent the two sides from closing.

Step 5



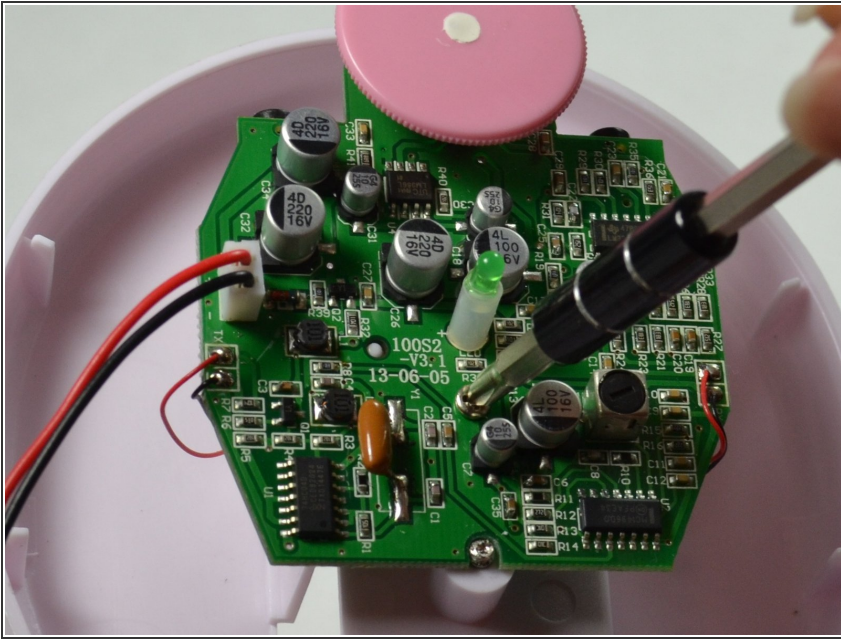
- Insert another plastic opening tool into the groove opposite to the side of the tool already inserted.
- Create separation on that side until the white plastic component comes off entirely.
- Place the white plastic component in a secure place.

Step 6



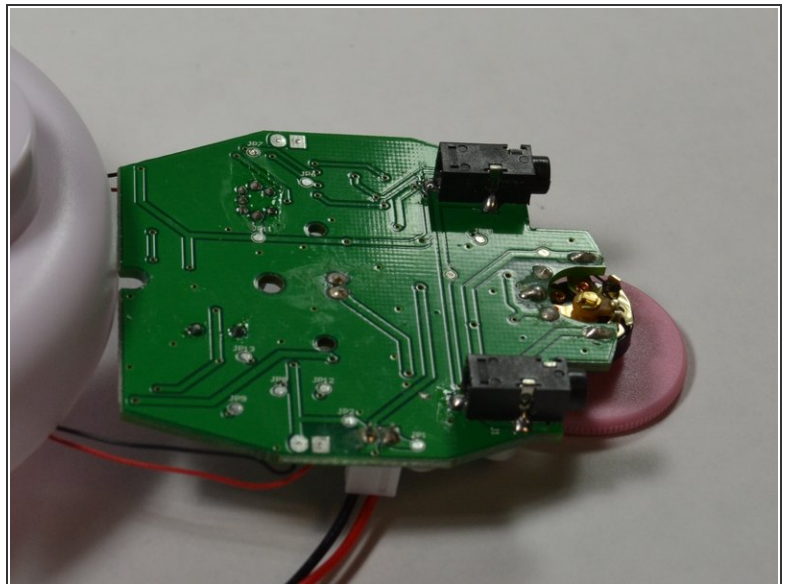
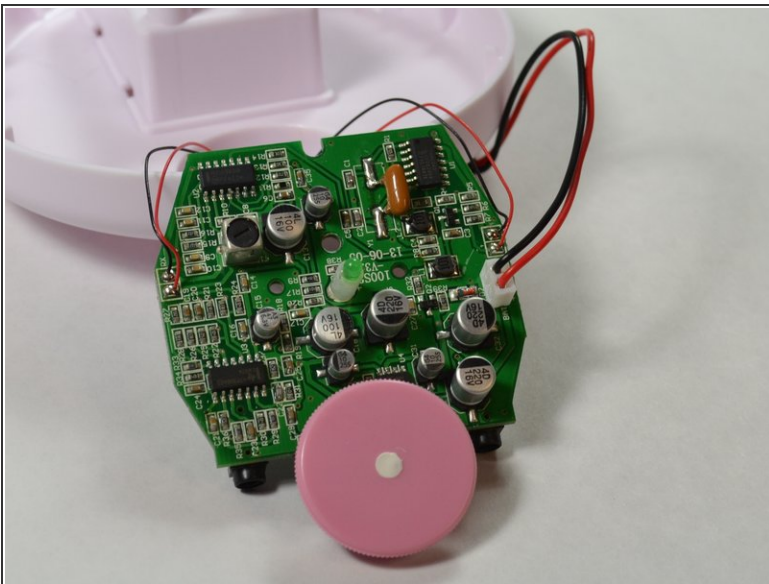
- With your hand, remove the pink component.

Step 7



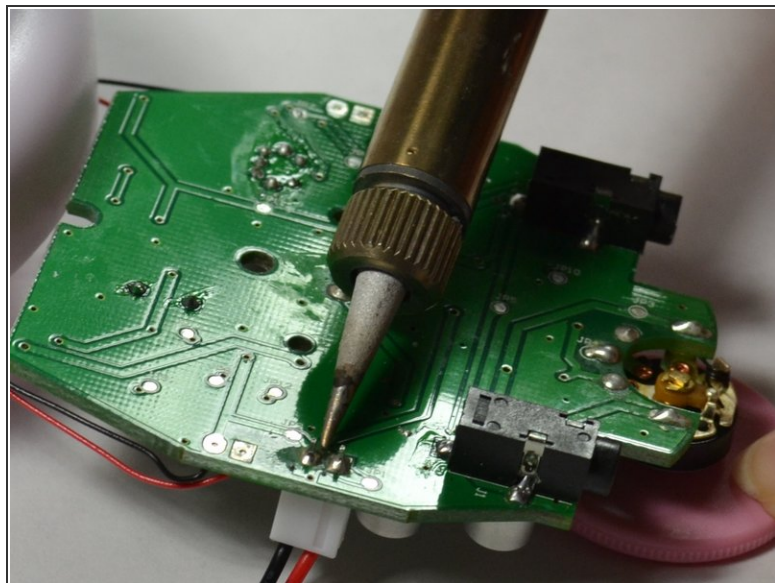
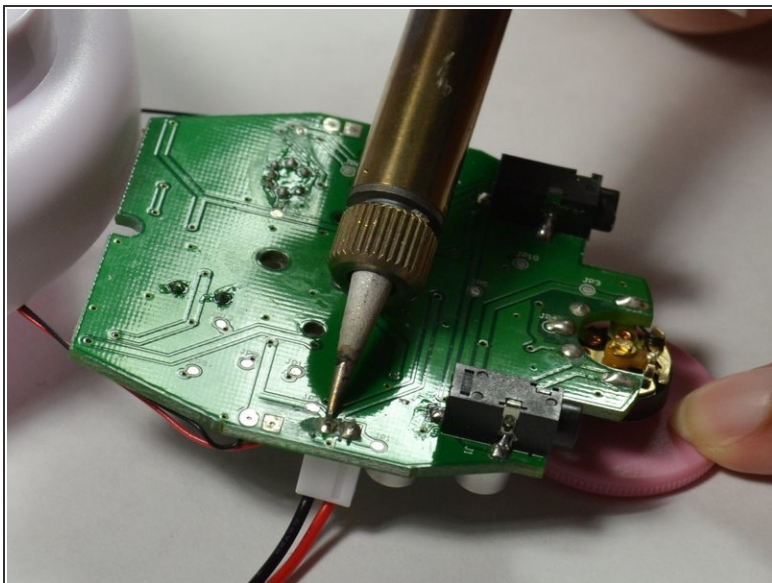
- Remove the 7mm Phillips #1 screw in the middle of the motherboard.

Step 8 — Battery Cable



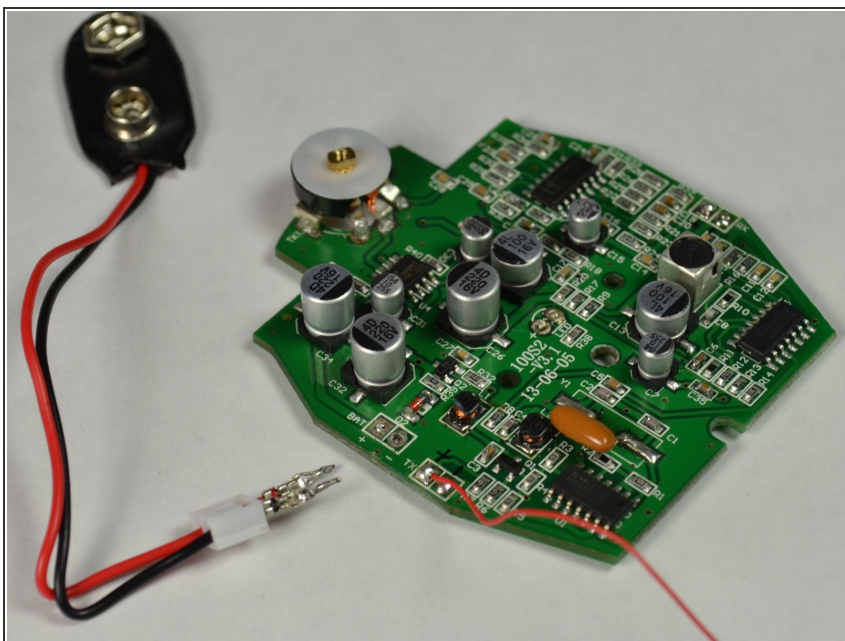
- Preheat soldering iron.
- Locate the battery cable leads on the motherboard.

Step 9



- Use a soldering iron and solder vacuum to unsolder the battery cable leads.

Step 10



- Remove the battery cables by pulling them out of the motherboard.

To reassemble your device, follow these instructions in reverse order.