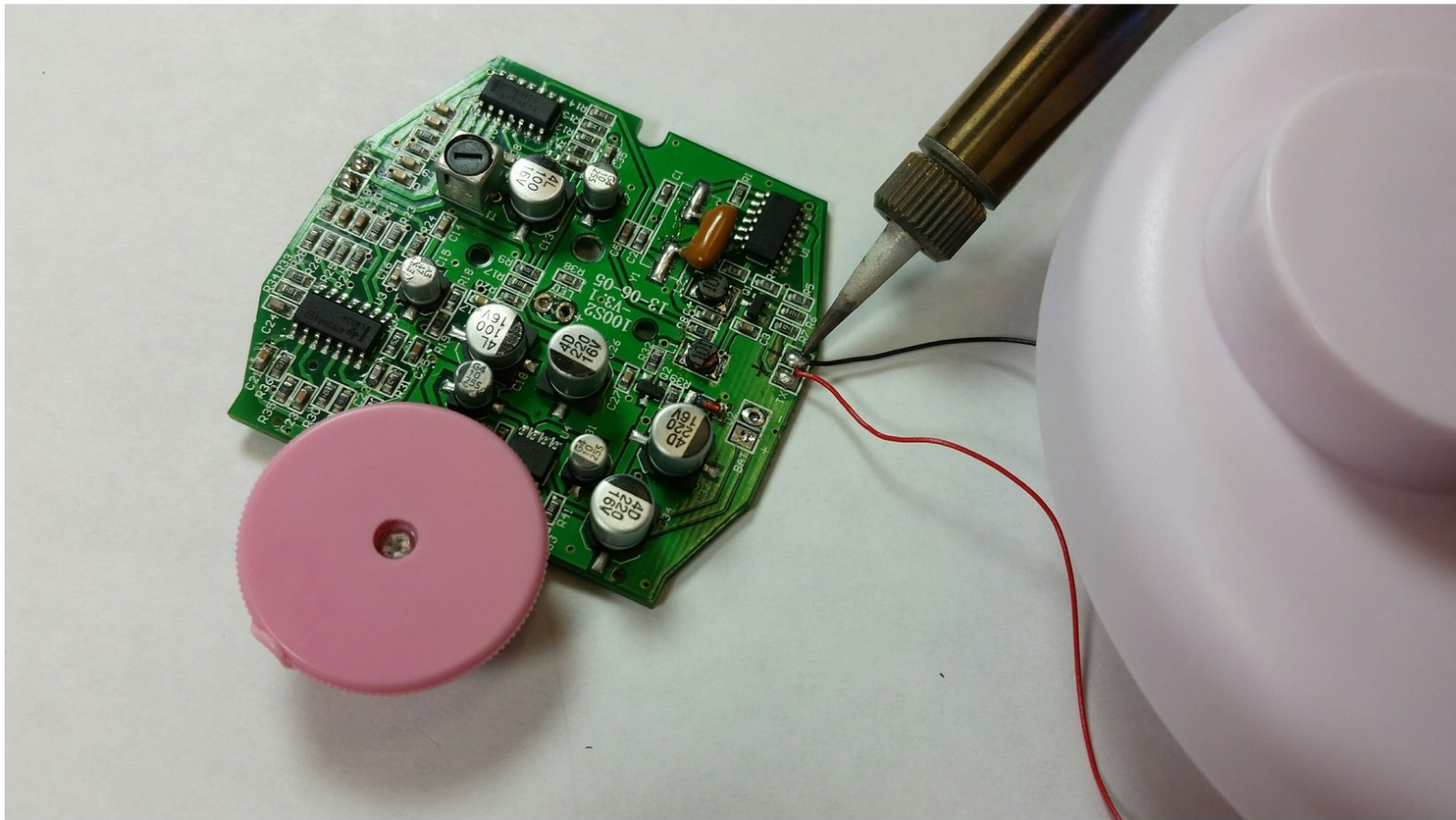




# Jumper Angelsounds JPD-100S The Transducer Replacement

Changing the transducer of the device.

Written By: Muosa Almubarak



# INTRODUCTION

Step by step, this guide will demonstrate how to change the transducer of the Angel Sound device

---

## TOOLS:

- [Phillips #1 Screwdriver](#) (1)
  - [iFixit Opening Tools](#) (1)
  - [Spudger](#) (1)
  - [Soldering Iron](#) (1)
-

## Step 1 — Motherboard



- Access the battery compartment
- Remove the battery compartment lid and set it aside.
- Disconnect the battery and set it aside.

## Step 2



- Puncture the sticker in the battery compartment with a spudger to access the screw beneath it.

### Step 3



- Remove the 7mm Phillips #1 screw from the battery compartment.
- Place the screw in a secure place.

### Step 4



- Begin prying open the device.
  - Insert a plastic opening tool into the side groove about 2cm from the pink plastic component and pry open one side of the device.
  - Once the side is separated, leave the opening tool inside to prevent the two sides from closing.

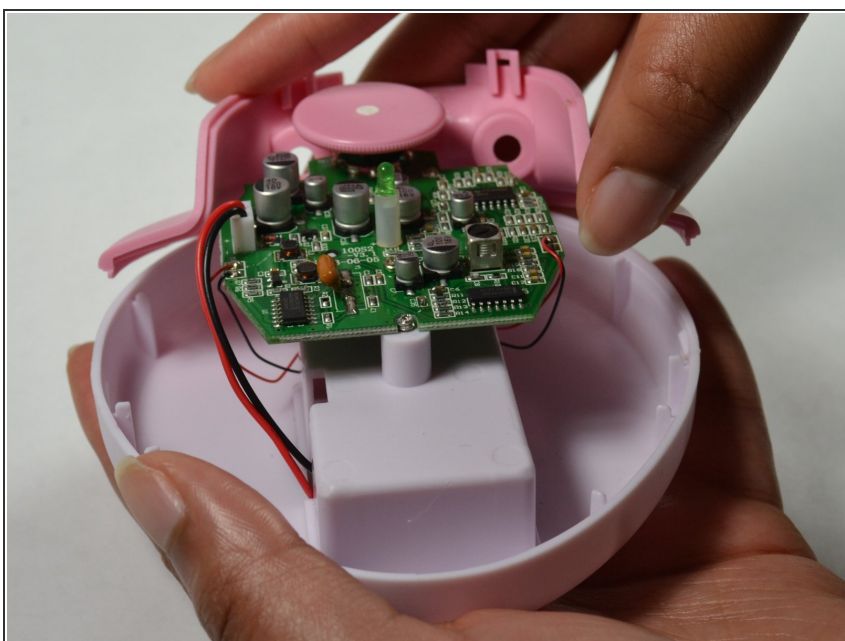


## Step 5



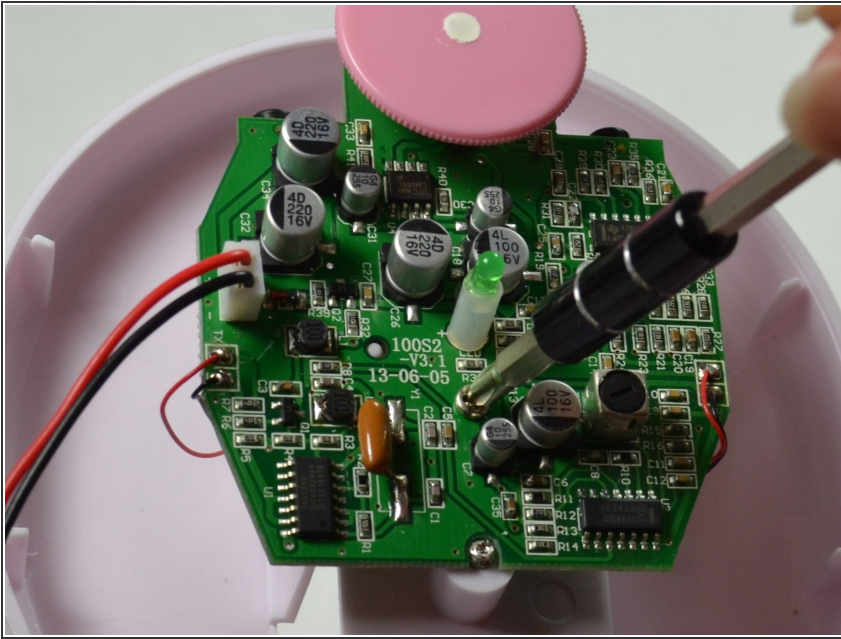
- Insert another plastic opening tool into the groove opposite to the side of the tool already inserted.
- Create separation on that side until the white plastic component comes off entirely.
- Place the white plastic component in a secure place.

## Step 6



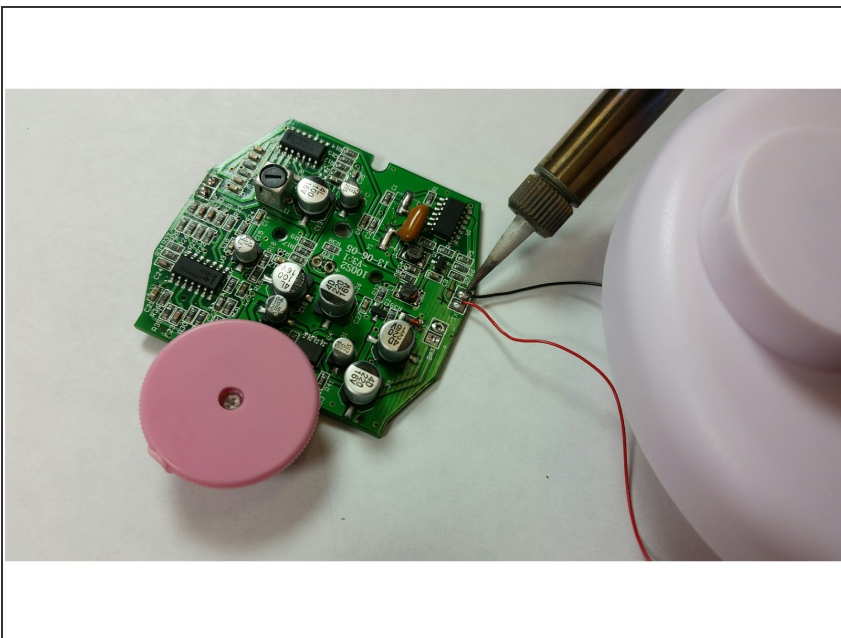
- With your hand, remove the pink component.

## Step 7



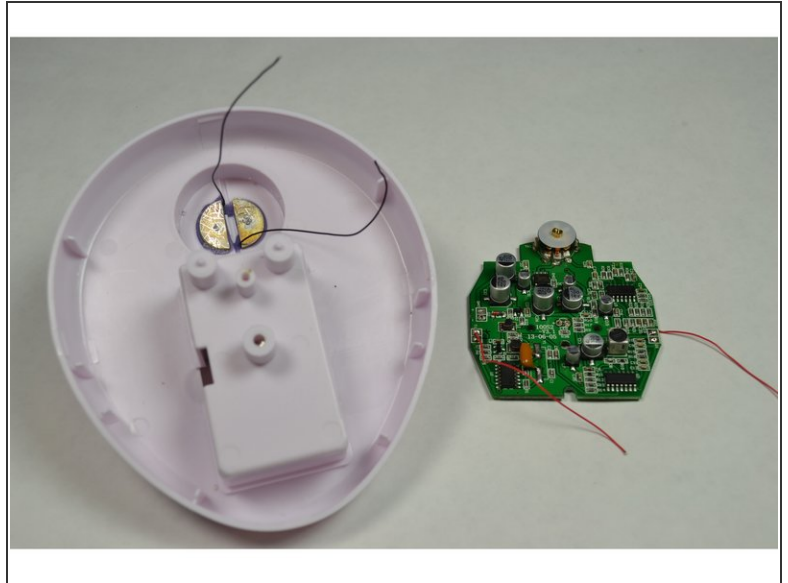
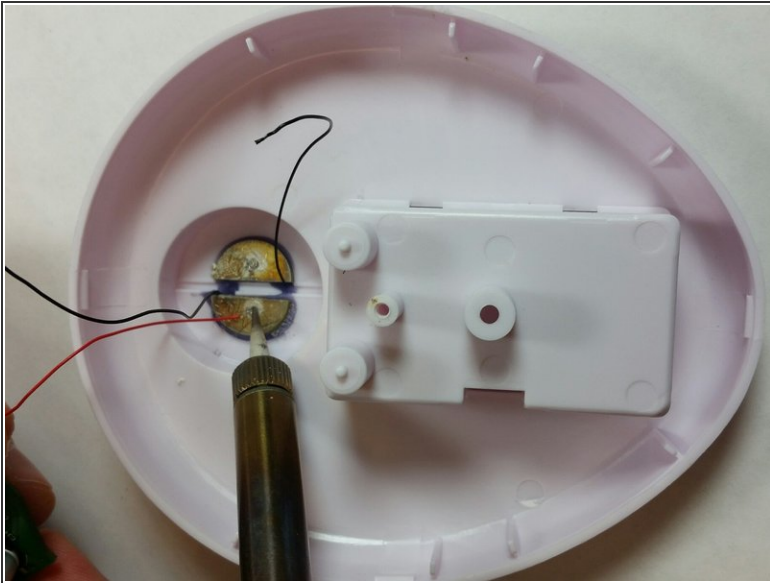
- Remove the 7mm Phillips #1 screw in the middle of the motherboard.

## Step 8 — The Transducer



- Unsolder the Black cable

## Step 9



- Unsolder the red cables from the metal plates.

To reassemble your device, follow these instructions in reverse order.