



Jura Capresso IMPRESSA J5 Brewgroup Disassembly

Disassembly of the "heart" of the coffee maker that receives ground coffee, forms the puck, allows the water to pass through then discards the used coffee.

Written By: igolten



This document was generated on 2019-09-16 10:18:04 PM (MST).

INTRODUCTION

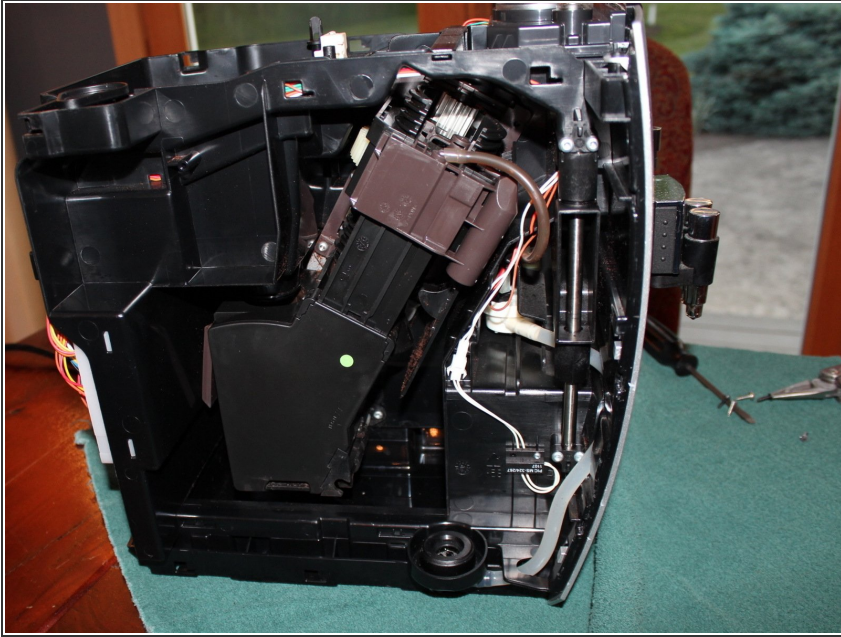
Warning only attempt this as a last resort if you need to.

Thank you to all those that commented / contributed to this and the other Jura guides

TOOLS:

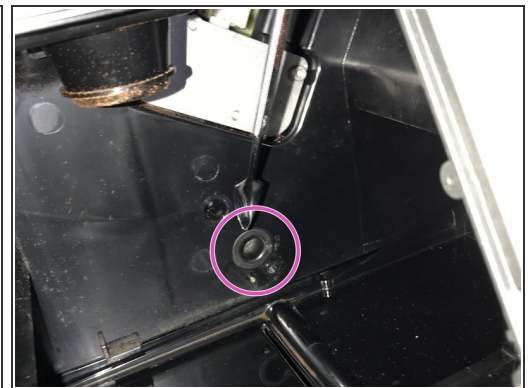
- [Large Needle Nose Pliers](#) (1)
 - [T15 Torx Screwdriver](#) (1)
 - [Flathead 3/32" or 2.5 mm Screwdriver](#) (1)
 - [Head Magnifier](#) (1)
-

Step 1 — Removing the Brewgroup



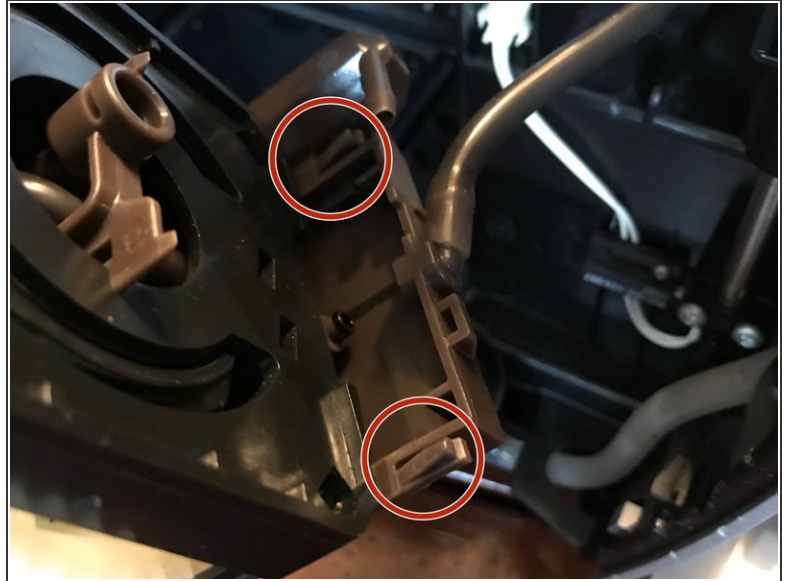
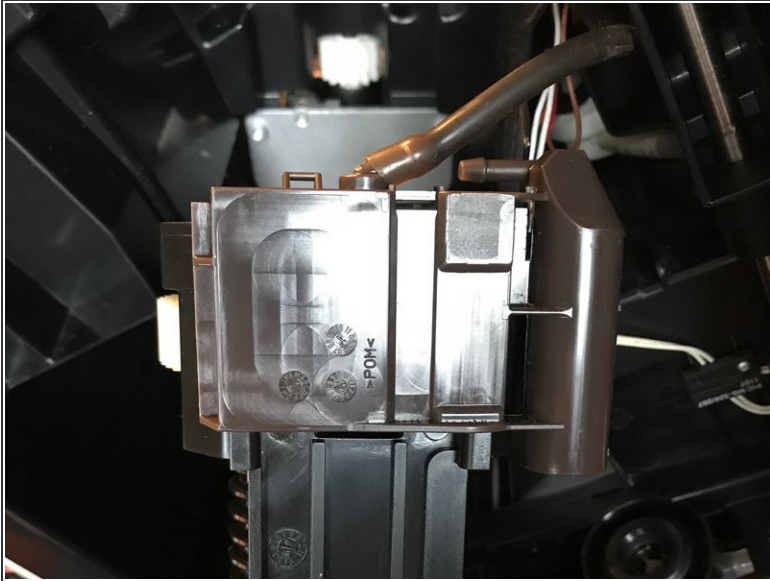
- To remove everything prior to the Brewgroup follow [this tear down](#).
- This guide begins after tear down step 15
- CAREFUL as you remove the brewgroup as it is still connected via the hose till you do step 3.
- In the tear down I referred to this as the tamper assembly but another great contributor wrote a guide on this specifically and referred to it as "Brewgroup" so...
- My J5 is different enough from the one in the other brewgroup guide so I made this guide.

Step 2 — Aligning Brewgroup into the machine



- CAREFUL as you remove the brewgroup as it is still connected via the hose till you do step 3.
- this step is mostly for reassembly. You need to align the brewgroup so that the knob circled in BLUE slips into the RED circle before you put the screws in.

Step 3 — External Upper Left



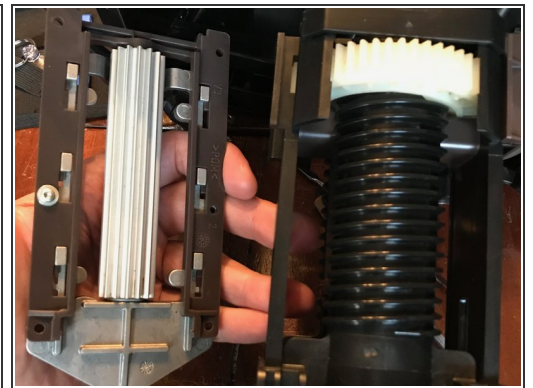
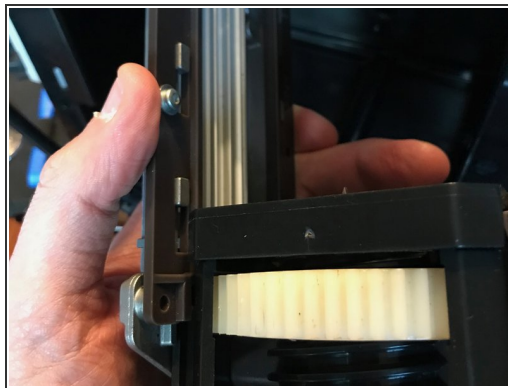
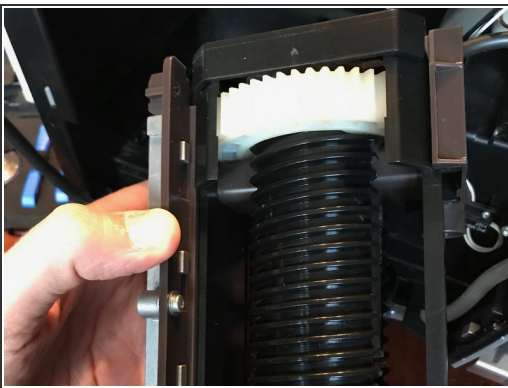
- 2 clips near the top shown in second photo, circled in RED
- CAREFUL as you remove the brewgroup as it is still connected via the hose till you do the this step.
- The brewgroup is removed from the left of the machine as you face the front, hence the steps labeled left, Front and right.

Step 4 — External Upper Front



- you might notice in some of the photos the first time I put it back together I forgot this piece luckily I remembered after I had the brew group back in:)
- 3 upper clips snap onto piece above the large white horizontal gear and two clips below as well.

Step 5 — External Upper Right



- Just slides off

Step 6 — External Lower Left and Right Plates 1 of 3



- removing the plate shown behind the metal poker
- there are four tabs circled in RED on the already removed plates
- Next step shows where to release them

Step 7 — External Lower Left and Right Plates 2 of 3



- Two are easy to see and get to with your finger
- the other two a little more hidden but not too bad
- Refer to the previous step showing the plate already removed to get an idea of where they are too.
- I try to point to them in the pictures with the metal poker.

Step 8 — External Lower Left and Right Plates 3 of 3



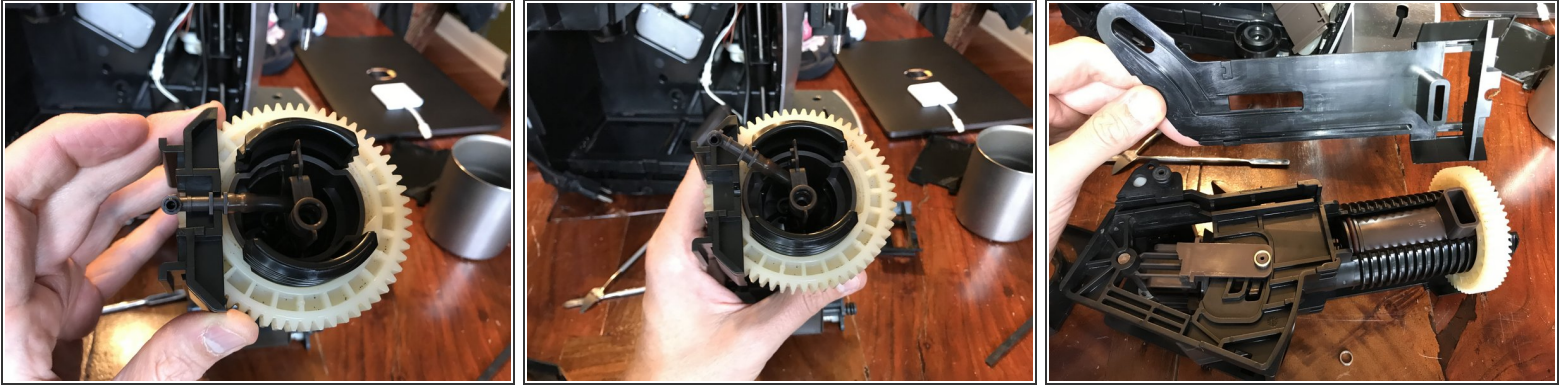
- Yep

Step 9 — Top removal



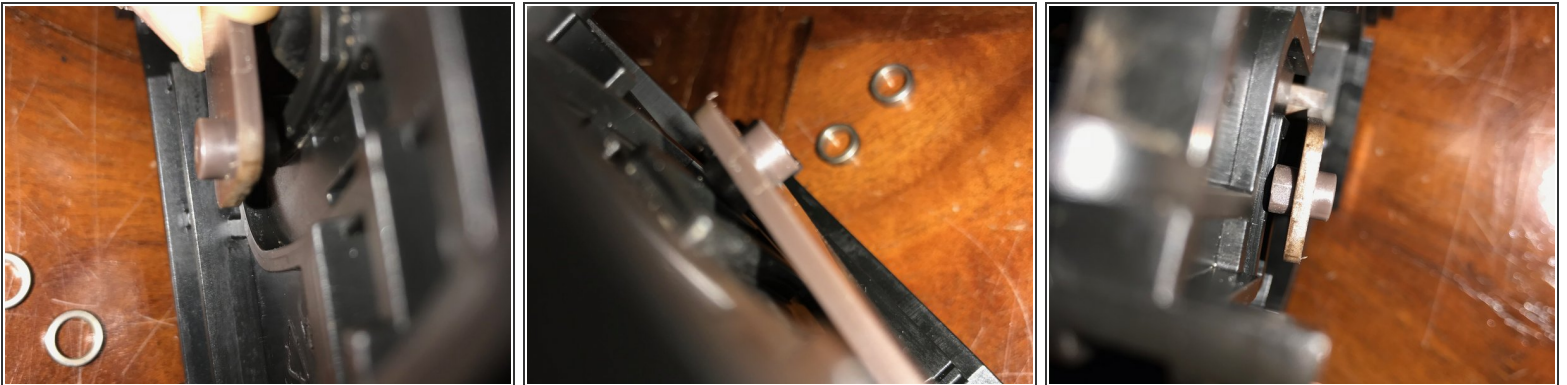
- Just lifts off, if memory serves me?
- the part shown under the green rectangle

Step 10 — L Bearing guides left and right



- Bearing makes an L shaped path on these left and right plates
- lift the hose out of the way before you remove the plate
- they just come off no clips
- CAREFUL there are four small metal bearing parts that can just fall off
- I clarify where they go in the next step

Step 11 — Metal bearing location pictures



- These can fall out at any point during assembly / disassembly, so good luck.

Step 12 — Upper Horizontal Gear and Tamper



- The 3rd photo shows the orientation of the upper hose in relation to the lower alignment knob mentioned in step 2

Step 13 — Inside view with Tamper removed



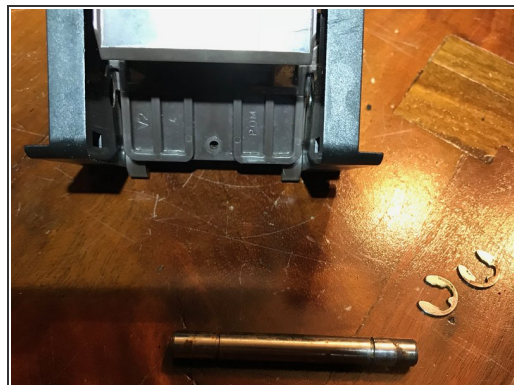
- shows orientation of the lower tamper

Step 14 — Front Lower assembly



- Just slides off
- I think this is similar to the Drainage valve referred to in [this other guide](#)
- except that this appears to be a different model?

Step 15 — Lower Shaft and snap rings



- remove with a small flat screw driver reattach with needle nose pliers

Step 16 — Lower shaft clean up



- scrubbed clean with a little soap and water

Step 17 — Lower Inner 1 of 2



- Just gently wiggle and twist it apart

Step 18 — Lower Inner 2 of 2



- **CRUCIAL STEP:** I messed this up the first time I reassembled this nearly broke the gearing and generated an error 8
- Error 8: I think is failure of the brewgroup to home.
- Place lower portion with the white gears at the top of motion inside the cylinder
- then slide in upper portion with the red o-ring then slide both together to the bottom
- I put a little vegetable oil with my finger on the inner cylinder wall otherwise it was super dry and hard to move.

Step 19 — Lower Inner Disassembled 1 of 2



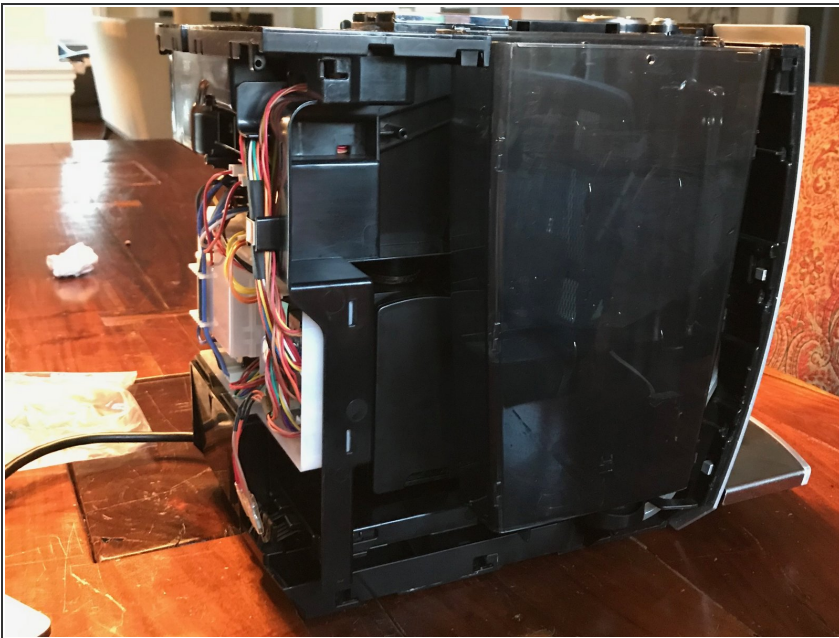
- Reference pictures

Step 20 — Lower Inner Disassembled 2 of 2



- Reference pictures

Step 21 — Testing prior to full reassembly



- So you can test it is working before putting it all back together
- As shown in the photo just lay the top back in place
- Water container partially full and in place
- CAREFUL keep anything away from bean grinder!! Block coffee bean full sensor with something.

To reassemble your device, follow these instructions in reverse order.