



# Jura Impressa S85 Grindstone Replacement

Replace the grindstones on Jura Impressa coffee makers

Written By: VauWeh



## INTRODUCTION

To replace the millstones, the top cover must be removed. The replacement of millstones is basically the same for all Jura coffee makers. Step 5 refers to a different model series and must be skipped.



### TOOLS:

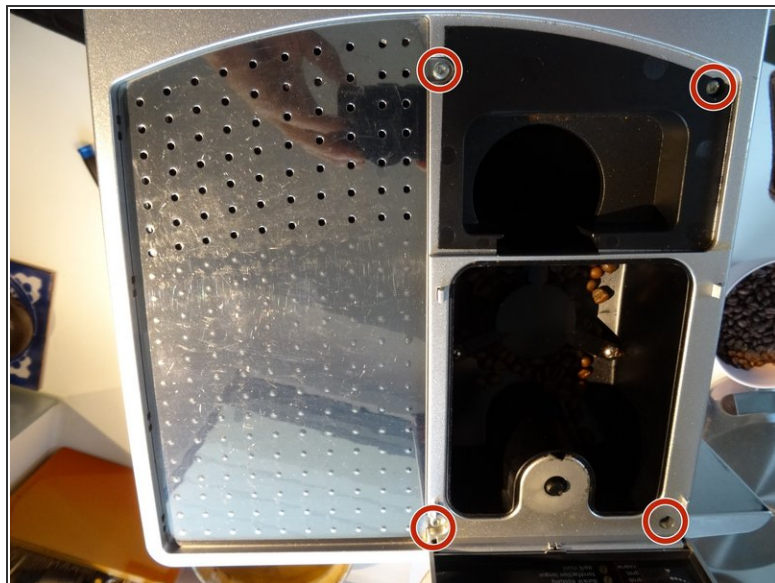
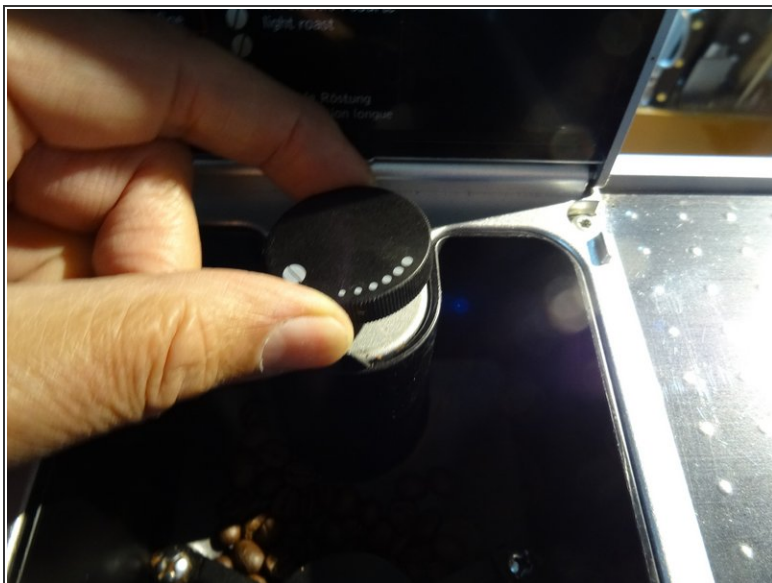
- [T15 Torx Screwdriver](#) (1)
- [T20 Torx Screwdriver](#) (1)




### PARTS:

- [New Item](#) (1)  
<https://www.juraprofi.de/Jura-Ersatzteile/Wartungssets/Reparaturset-Jura-Mahlwerk::11076.html>

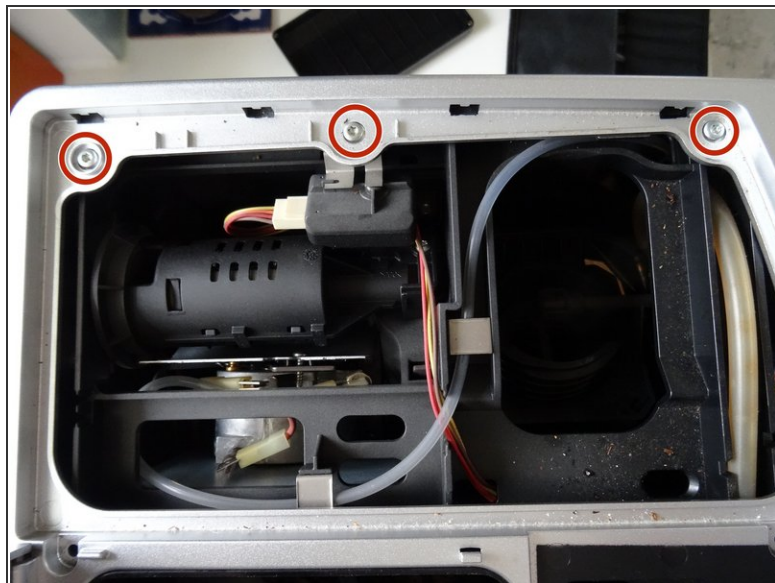
## Step 1 — How to open a Jura Impressa S95's cover



 Always remove the power cord from the wall outlet.

- Lift out the coffee tray
- Remove the lid sealing the coffee bean container
- Remove all of the coffee beans you can possibly remove.
- Pull the adjuster of the coffee bean grinder straight up
- Remove the four T15 Torx screws

## Step 2



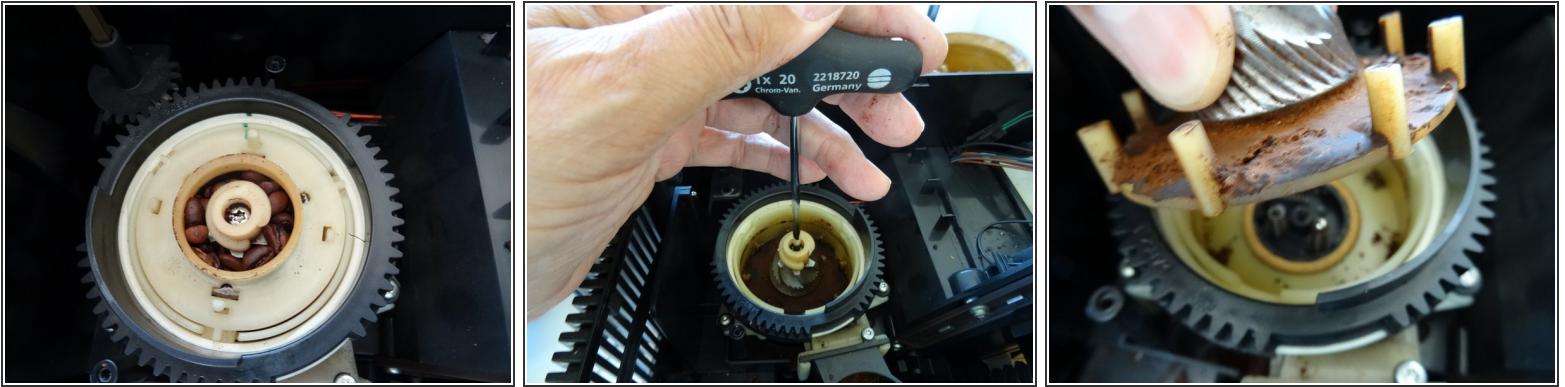
- Remove the cup heat plate.
  - ⓘ It can be opened like a book.
- Below the cup heat plate there are three more T15 Torx screws. Remove them.

## Step 3



- The top cover is now free. Lift ´er up and set ´er aside.

## Step 4 — Removing The Grinder Ring



- Now the grinder is free. Again take a picture, then pull out the axis of the adjuster with moderate force.
- Depending on the model you will find a silicon sealing on top of the grinder ring, remove it.
- Watch the fabrication signs , here green. This alignment must be restored later. Now turn the great black gear about 90 degrees counterclockwise. The grinder ring is free and can be lifted off.

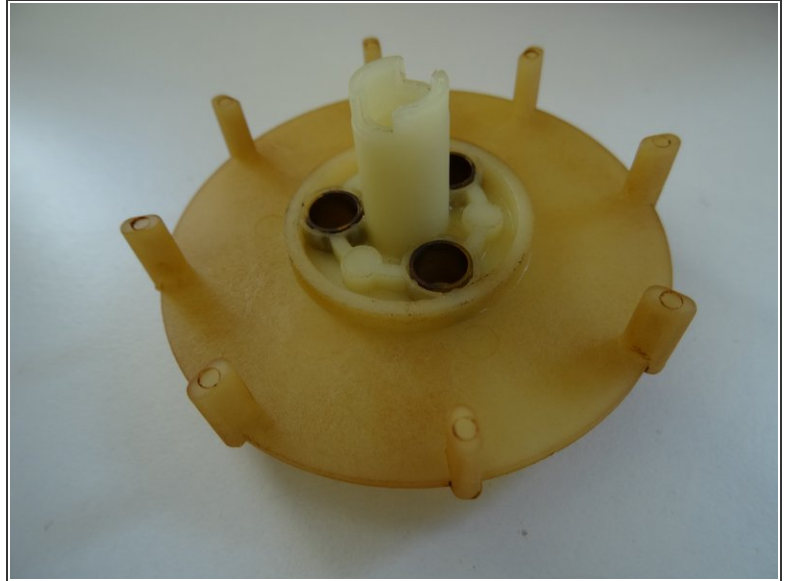
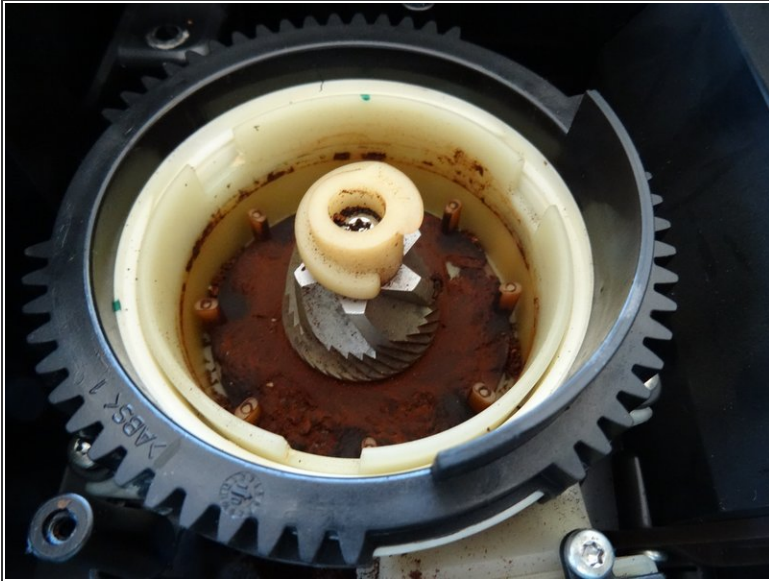
## Step 5 — The Grinder Cone



 In the next step be very careful not to loose these three springs, balls and cartridges.

- Now the coffee bean feeding helix (white) can be removed. Very very carefully lift off the grinder cone including its drive.

## Step 6 — Cleaning



- In most of the cases the mill is full of sticky old coffee powder. Clean everything thoroughly for excellent coffee aroma.
- The felt ring around the drive axis can be pulled out carefully using a needle. Clean it. For the inner grinder use a paint brush and a wet cloth, the other parts can be cleaned with a brush and warm water. Each part must be dried well before reassembling it.

## Step 7 — Change The Grinder Ring



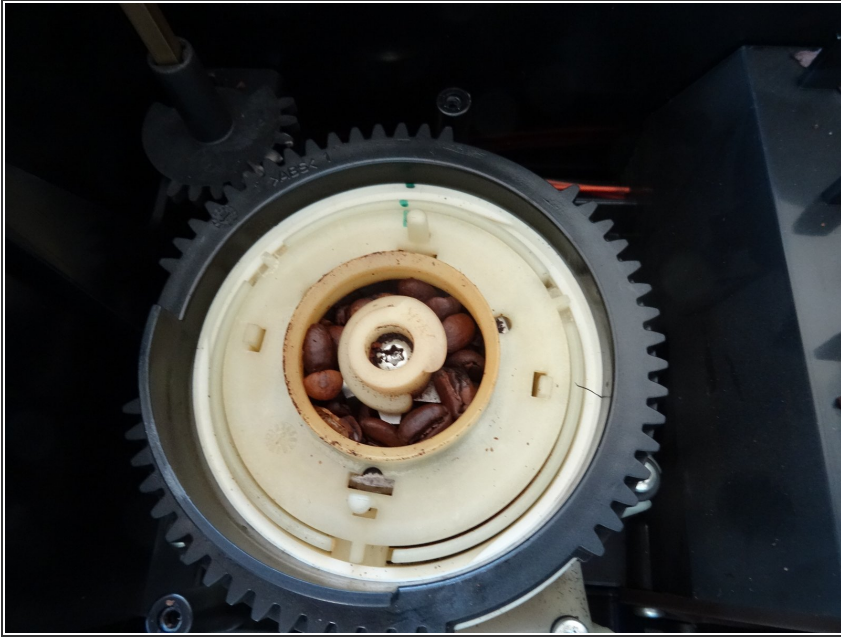
- Push both of the small latches alternately. Then the ring cover should come out.
- Two clamps hold the grinder ring in its place, push them aside and it should come free.
- Again clean everything. Press the new ring and cover in its place. With that the grinder ring is exchanged.

## Step 8 — Change The Grinder Cone



- First insert the cleaned driver, then the three sleeves, springs and balls. Now fit the grinding cone on the three balls.
- Then fit the auger, screw in central screws. When screwing in, push the cone downwards and make sure that everything meshes.

## Step 9 — Reassembling



- Insert grinding ring. The black gear is turned to the right again until the three marks are aligned. Then reinstall the adjuster drive shaft as it was originally.
- ⓘ The adjustment of the new grinder burrs must not necessarily be the same as the old ones. You can approximately find the mean position, which was marked before, by turning the outer ring as far as possible clockwise, then turning it fourteen clicks backwards.
- ⓘ It is a good idea to check if the grinder rotates freely. You can remove the meal hopper and look at the millstones from the side.
- Then install the remaining parts in reverse order.
- You can set the grinding degree nicely by placing an empty roll of toilet paper perpendicular to the open mill and filling it with a few coffee beans. Plug in the plug (be careful!), choose a cup of coffee and watch as the coffee grounds fall out of the grinder.

## Step 10 — Before - After



- These two pictures are no fake: Before repairing the grinder the coffee is thin and transparent. With new stones the coffee is strong and has a fine crema. The repair was a real success!

To reassemble your device, follow these steps in reverse order