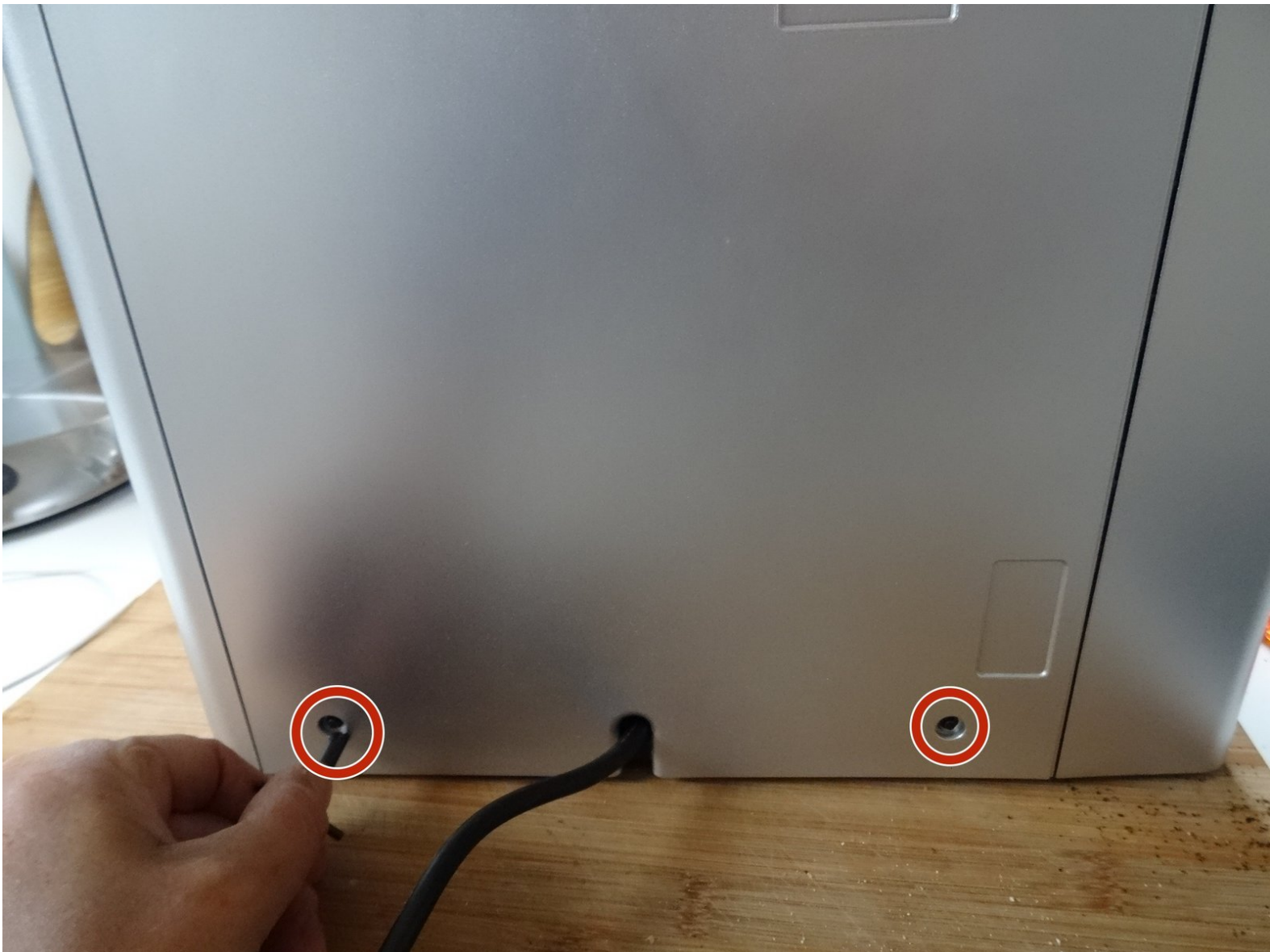




# Jura Impressa S95 backpanel

Remove the backpanel of a Jura Impressa S

Written By: VauWeh



---

## INTRODUCTION

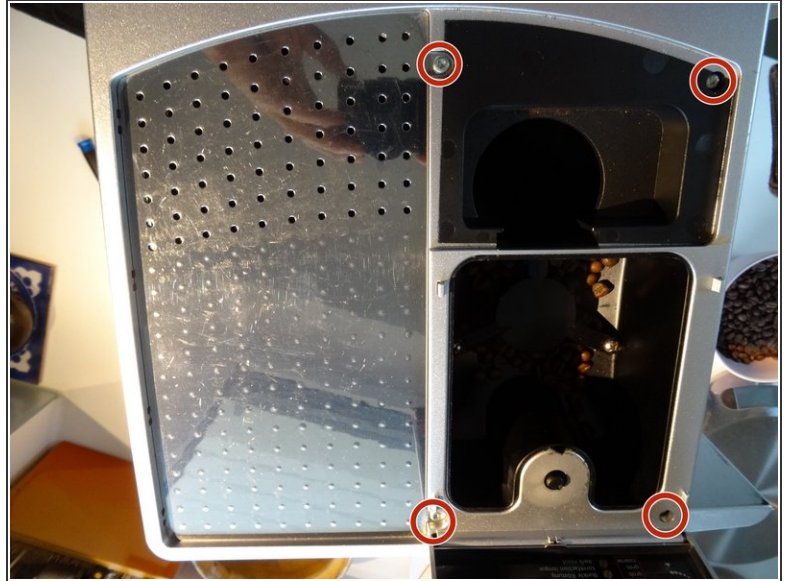
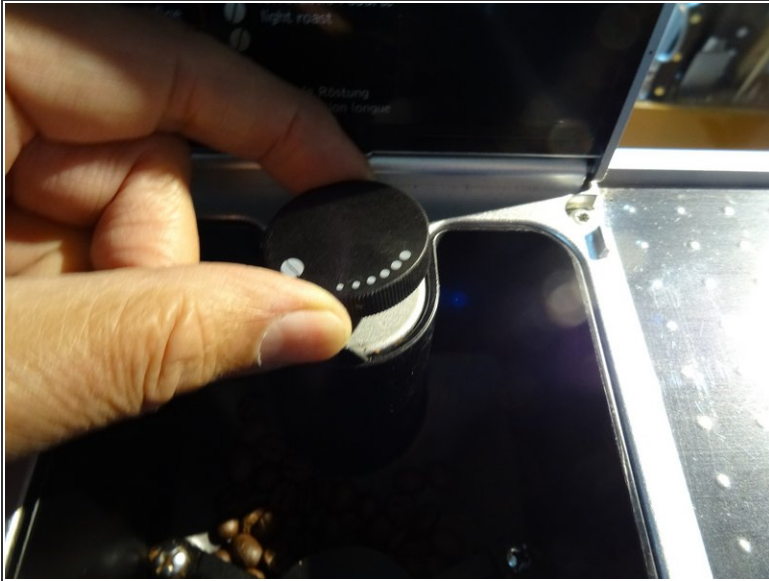
If you want to gain access to inner parts (e.g. pump or heater), you have to remove the backpanel. It is secured by two proprietary screws with oval head.



### TOOLS:

- [T15 Torx Screwdriver](#) (1)
  - [Oval Drive Bit](#) (1)
-

## Step 1 — How to open a Jura Impressa S95's cover

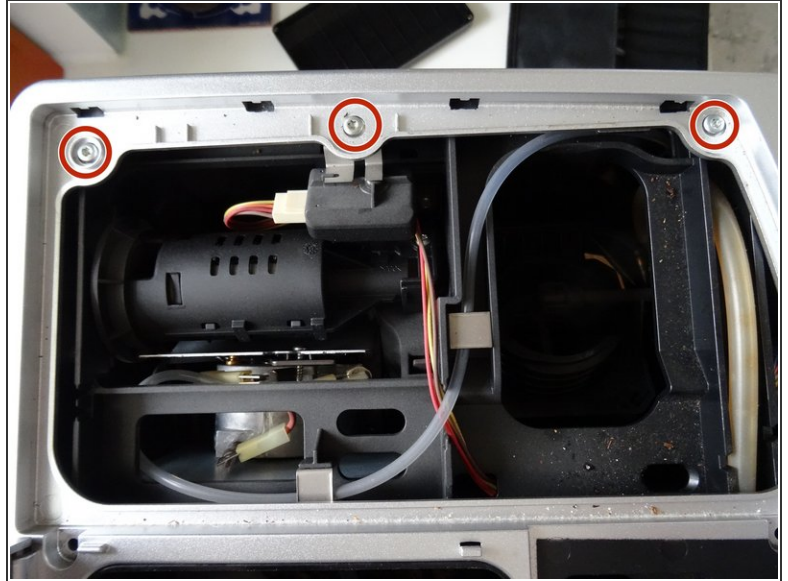


 Always remove the power cord from the wall outlet.

- Lift out the coffee tray
- Remove the lid sealing the coffee bean container
- Remove all of the coffee beans you can possibly remove.
- Pull the adjuster of the coffee bean grinder straight up
- Remove the four T15 Torx screws



## Step 2



- Remove the cup heat plate.
  - ⓘ It can be opened like a book.
- Below the cup heat plate there are three more T15 Torx screws. Remove them.

## Step 3



- The top cover is now free. Lift ´er up and set ´er aside.

## Step 4 — Jura Impressa S95 backpanel



- The backpanel is secured with two proprietary screws with oval head. They seem to be rivets, but in fact are screws. The only purpose is, to keep us out of our own devices. You can remove them using an oval drive bit. (Part of some iFixit tool collections or available at a Jura provider). In a pinch try needle nose pliers.
- Remove the two oval head screws on the lower edge of the backpanel.
- Lift the panel up.

To reassemble your device, follow these instructions in reverse order.