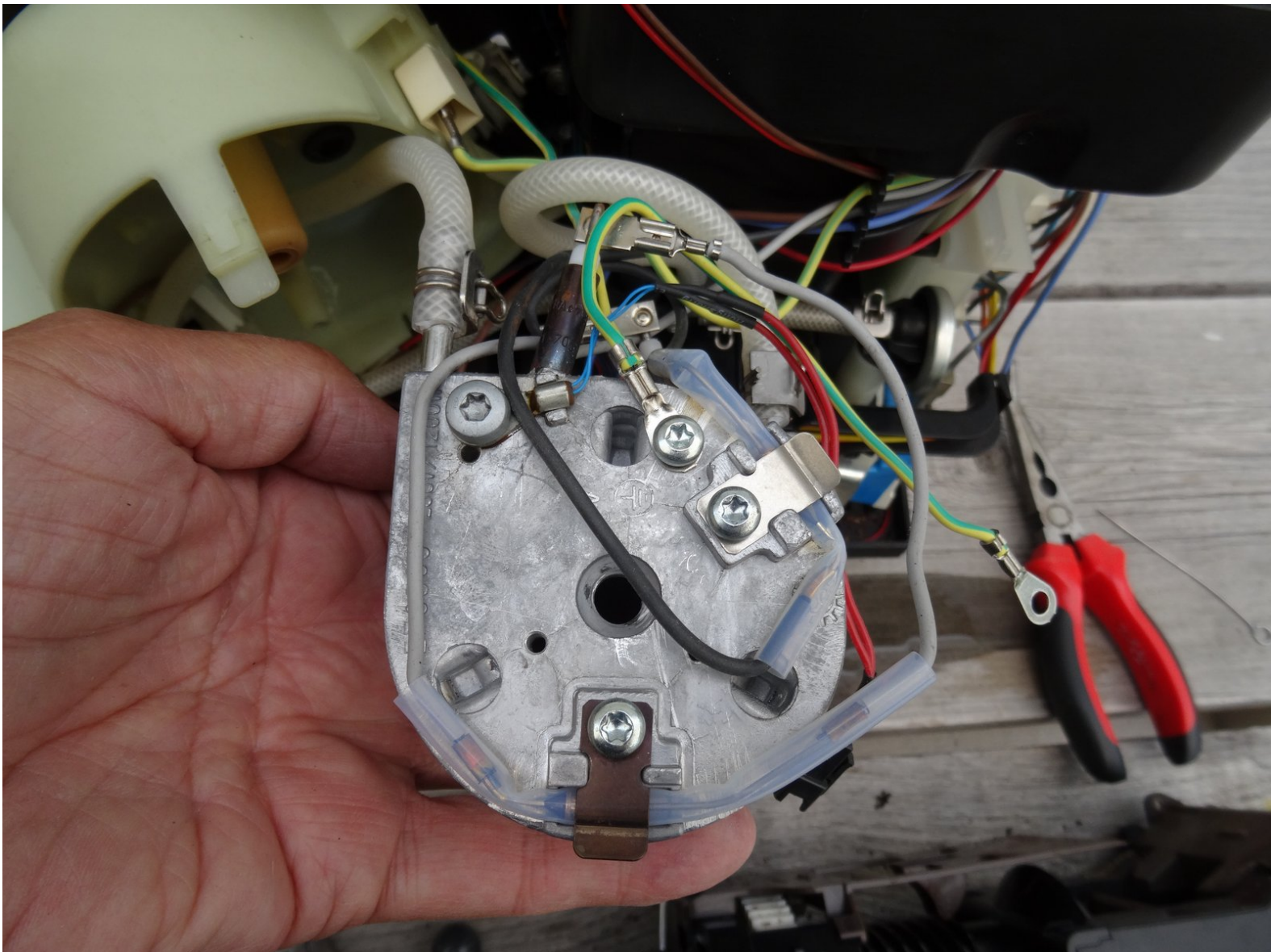




Jura Z7 Replace water heater

Replacement of the water heater for the Jura Impressa Z7

Written By: VauWeh



INTRODUCTION

If the water heater is calcified or does not heat properly, it must be replaced. This procedure is shown here.



TOOLS:

- [Oval Drive Bit](#) (1)
 - [Phillips #2 Screwdriver](#) (1)
 - [T10 Torx Screwdriver](#) (1)
 - [T25 Torx Screwdriver](#) (1)
-

Step 1 — Opening the Jura Z7 Housing




 Unplug the Z7 from the power outlet

- Remove all attachments like water tank, drip tray, coffee bean cover.

Step 2



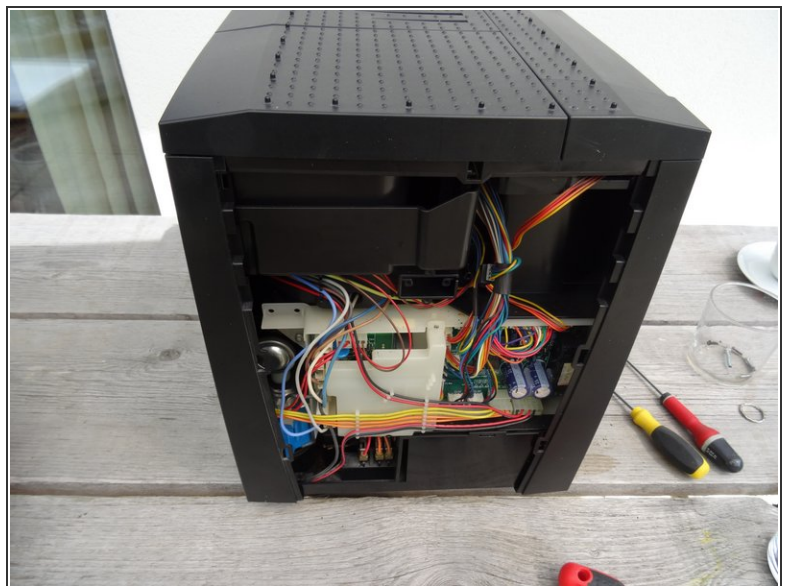
- Turn the machine so the back is facing toward the front.
- The Jura sign must be removed. Turn it a few millimeters in a clockwise direction.
-  If this becomes difficult use a suction cup to assist
- Remove the Jura sign

Step 3



- Behind the Jura sign are two screws with an oval head. They have to be removed.
- These screws have an oval head that makes them look like rivets (picture 2). You need to use a special key or bit for their removal. If necessary, it could be done with a synonymous with a pair of needle nose pliers. Jura wants to keep us out of our own machines!!!!

Step 4



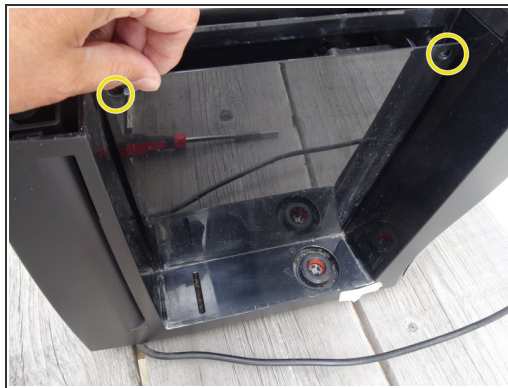
- Push the back down a bit and then remove it.

Step 5



- Pull the right side panel backwards and take it off.
- ⓘ Sometimes it gets a bit stuck and may require a bit more of a pull.



Step 6



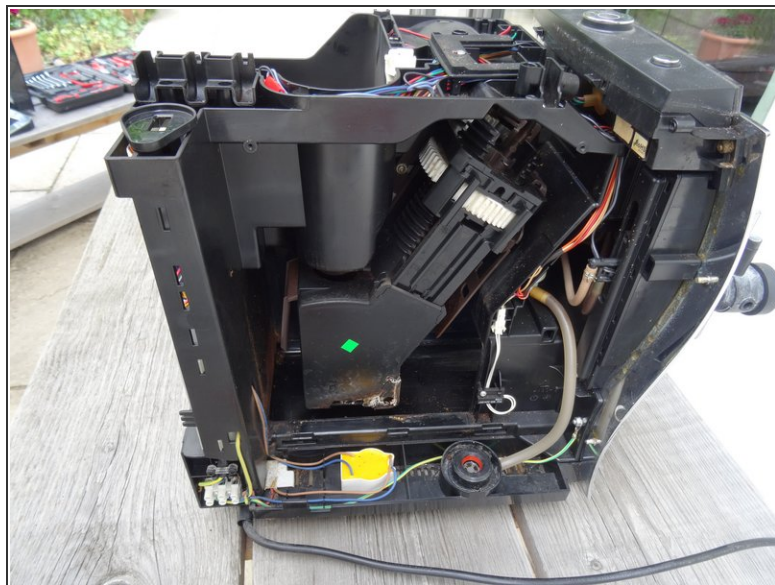
- ⓘ In this step, you should remove the screws of the right side panel. The side panel itself can only be removed after removing the top cover.
- Remove the Torx T10 screw on the front wall of the side panel.
- In the side part there is a lid over the brew group. The lid is fastened at the top with two oval head screws. Remove those to remove the lid.
- With the cover removed the brew group becomes visible

Step 7



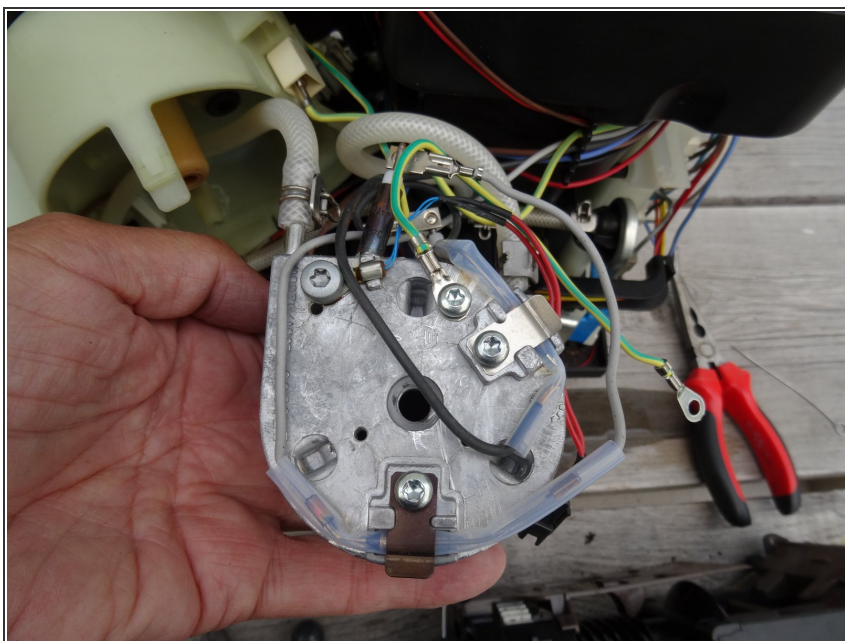
- This step shows how to remove the top cover
 - Remove the powder tray and all coffee beans.
 - The cover is fastened with four Torx T10 screws. Those are easily found under the covers as well as the small cover on the left back side.
 - Also, remove the two Phillips screws on the bean container and remove the bean container.
 - Lift the cover upwards.
-  If it is stuck, carefully pry with a plastic opening tool.
-  The lid of the bean container is held in place by a small strong magnet that loosely rests. It is either in the green marked depression, or it remains hanging on the bean container. Make sure it is not lost!

Step 8



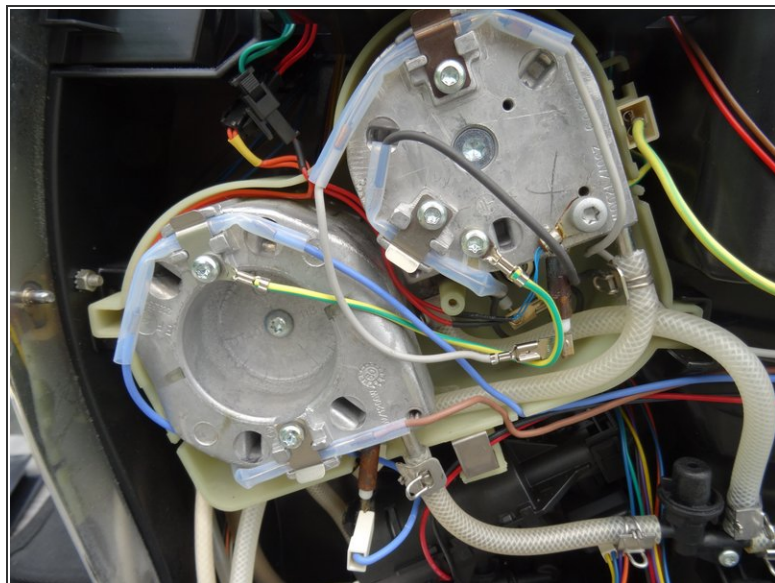
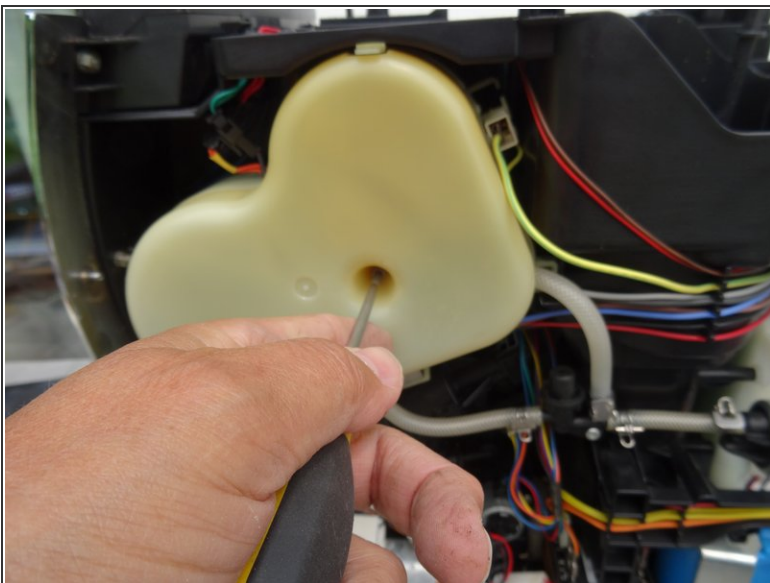
- Pull the left side panel backwards to take it off.

Step 9 — Water Heater



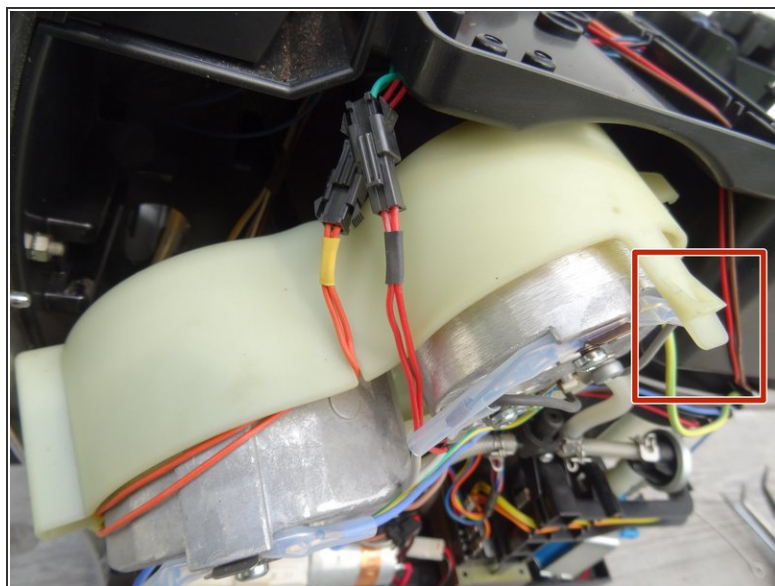
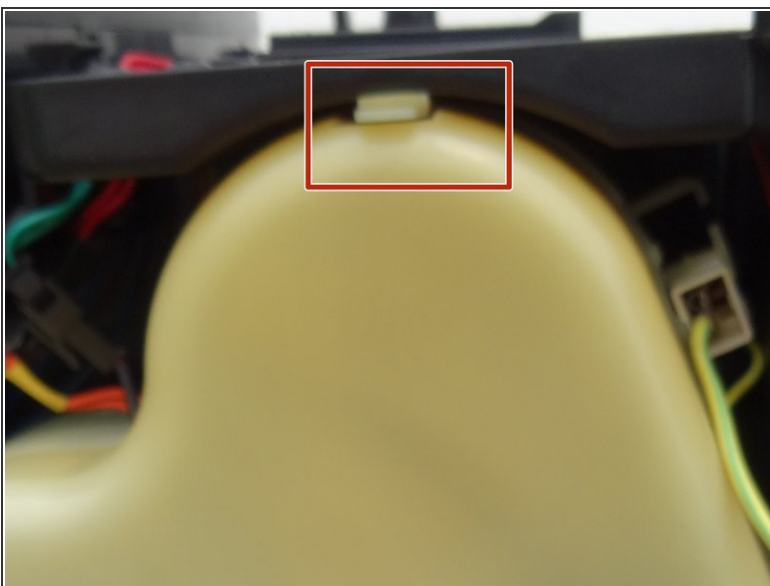
- Here is one of the two water heaters removed.

Step 10



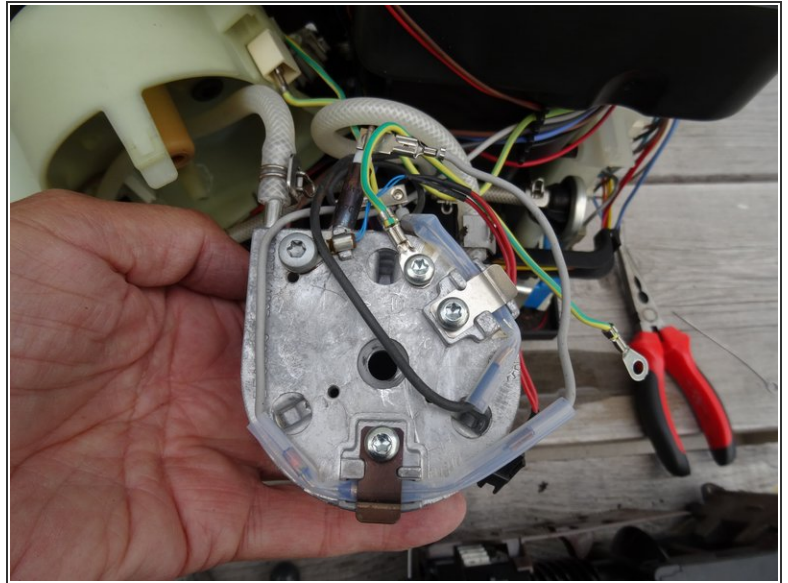
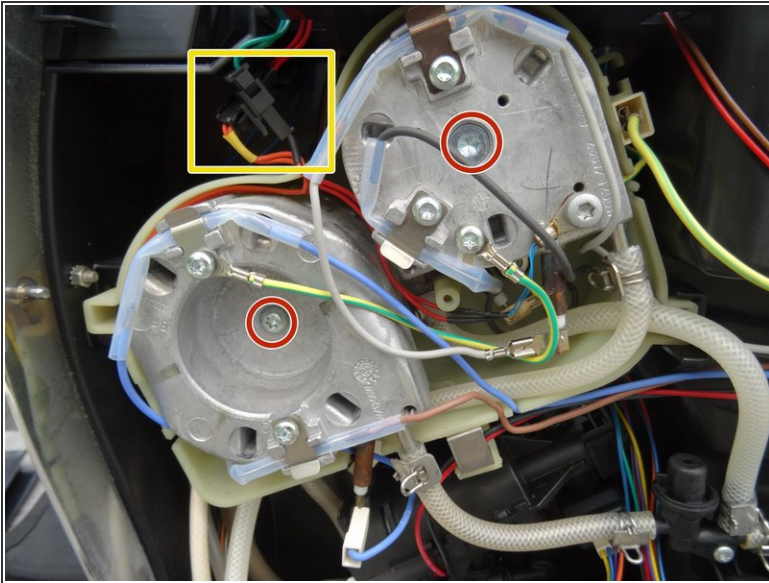
- Loosen the Torx T10 screw on the lid over the instant hot water heater.
- Remove the lid. The two instant hot water heaters become visible.

Step 11



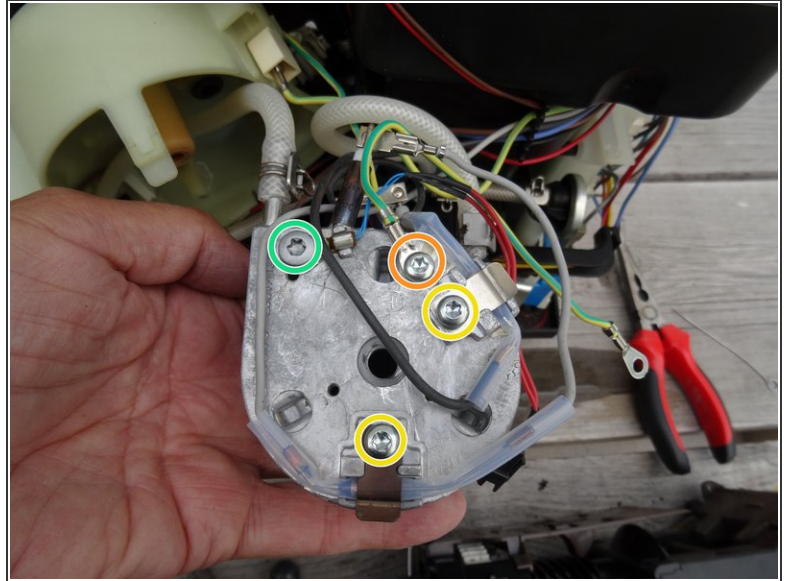
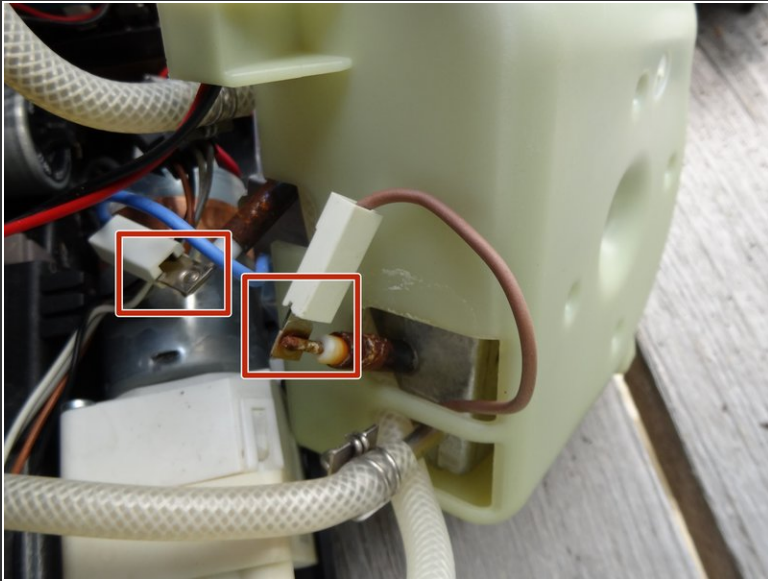
- Pull out the carrier for the water heater. It is locked at the top.

Step 12



- i** The two water heaters are fixed in the middle with a Torx T25 screw (marked in red). The locknut on the back is loose in the carrier and often falls out while turning the screw.
- Unscrew the screw on the heater to be replaced. Watch the lock nut on the back.
 - Carefully remove the connectors on the sensor cables.
 - Gently remove the water heater. It is still connected by hoses and wires.

Step 13



- Remove the cable shoes from the water heater connections.
- Remove both Torx T25 screws from the brackets on the thermal fuses. Remove the thermal fuses.
- Remove the Torx T25 screw from the eyelet of the yellow / green ground cable. Detach the cable.
- The thermosensor may stay. If it is defective (the machine then reports Error 4), it has to be replaced

Step 14



- Now only the hoses are connected. They are attached with clips.
- The clips are easy to open and close: attach a pair of pliers as shown in the photo and squeeze them together. The clamping plate falls out immediately and releases the clamping ring, which can then be compressed with the pliers and pushed away.
- ⓘ To close the clips, you must first insert the clamping plate and press down firmly with your fingers or pliers. It then snaps in and secures the clamping ring. To understand the principle, look closely at the clips in other places.
- When the clips are open, the hose can be pushed off with some force.

Repeat the steps in reverse order to reassemble your device.