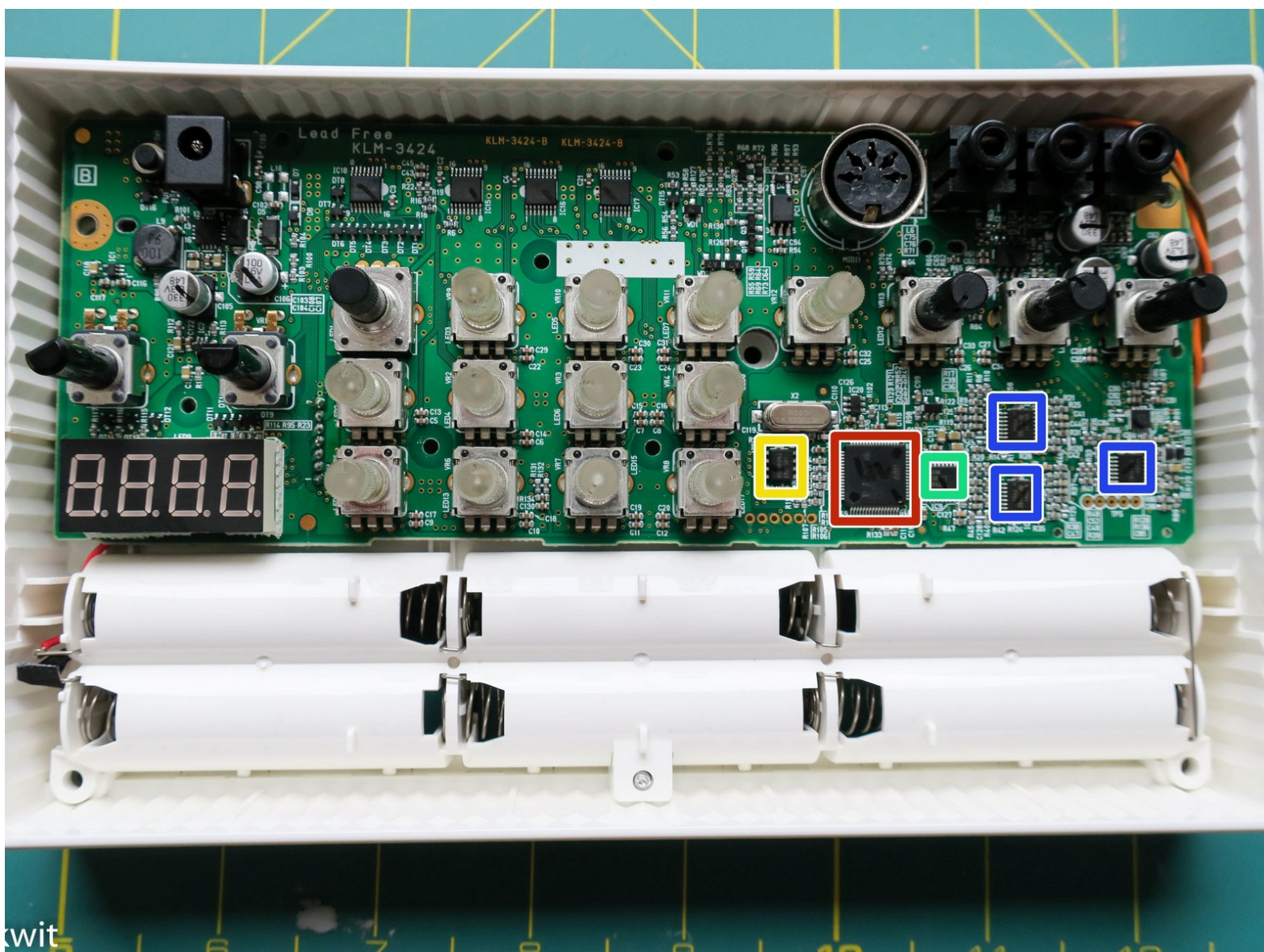




KORG Volca Sample Teardown

This guide will show how to open the KORG Volca Sample and explain how things work inside.

Written By: Christian



INTRODUCTION

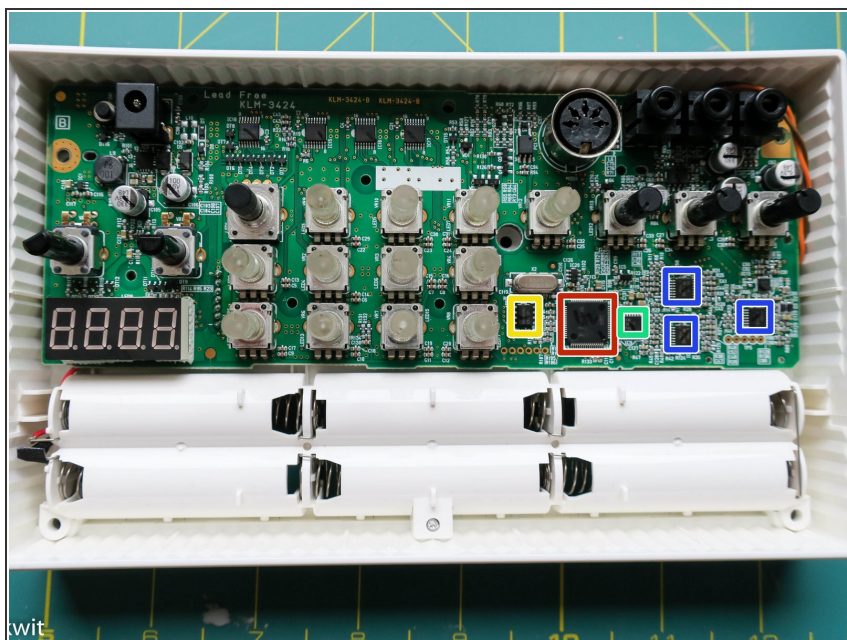
This guide will show how to open the KORG Volca Sample and explain how things work inside.



TOOLS:

- [Essential Electronics Toolkit](#) (1)
-

Step 1 — KORG Volca Sample Teardown



- This is the main processor. It is an Cypress FM4-Series MB9BF164L.
- 25Q03213
- The DAC. AKM4834ET.
- MV3241 / 49AG3 / P220