



Kano Computer Kit Complete Power Button Replacement

How to replace the red power button on the back of the Kano Computer Kit Complete screen.

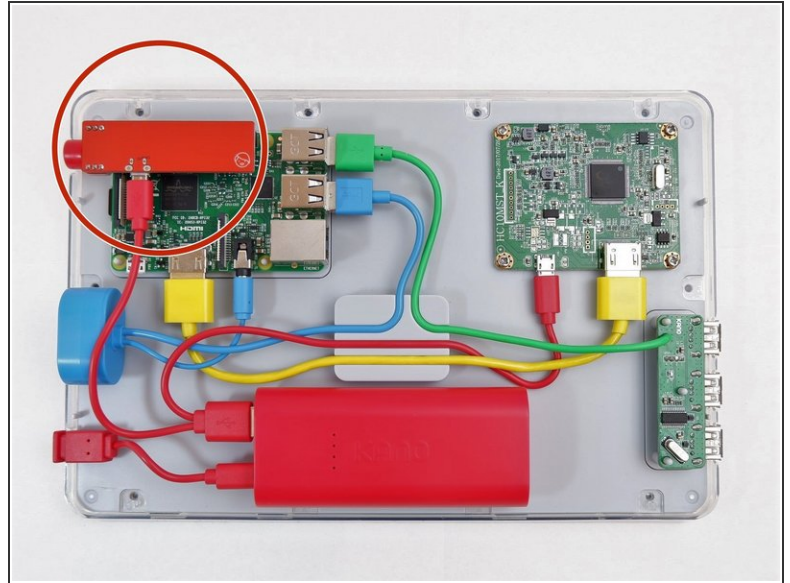
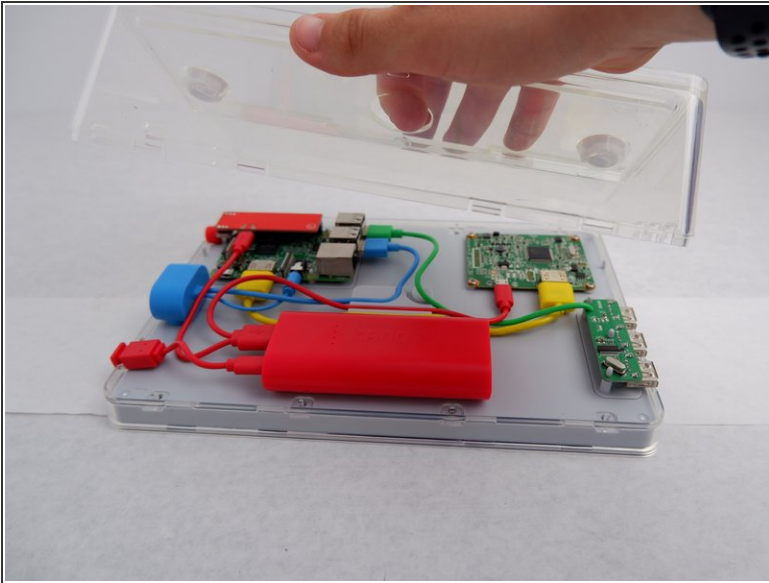
Written By: Julia Sherrill



INTRODUCTION

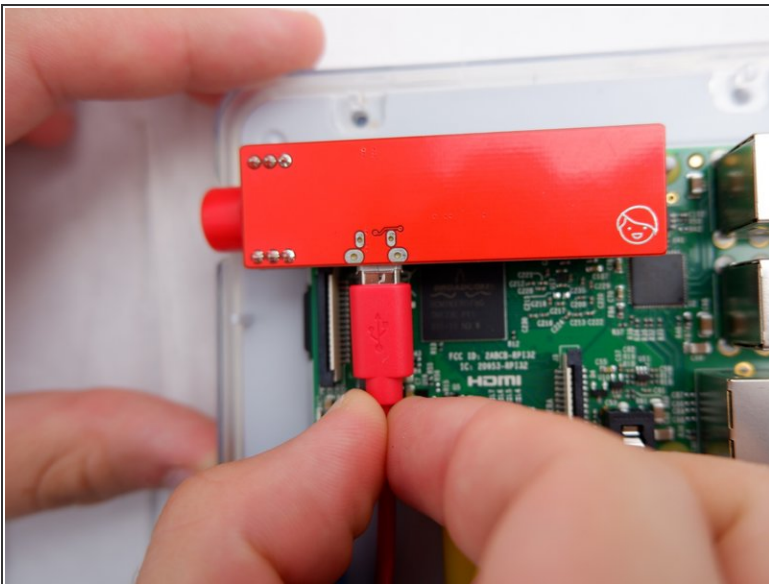
Use this guide to replace the power button on your Kano Computer Kit Complete. The power button is a piece of hardware that turns your computer on or off. The button may need to be replaced when it no longer turns the computer on or off. In some cases, your power button may get stuck when pressed also causing it to not work as intended. This guide does not require any tools to complete. Any further questions can be answered by going to [Kano's Help site](#).

Step 1 — Power Button



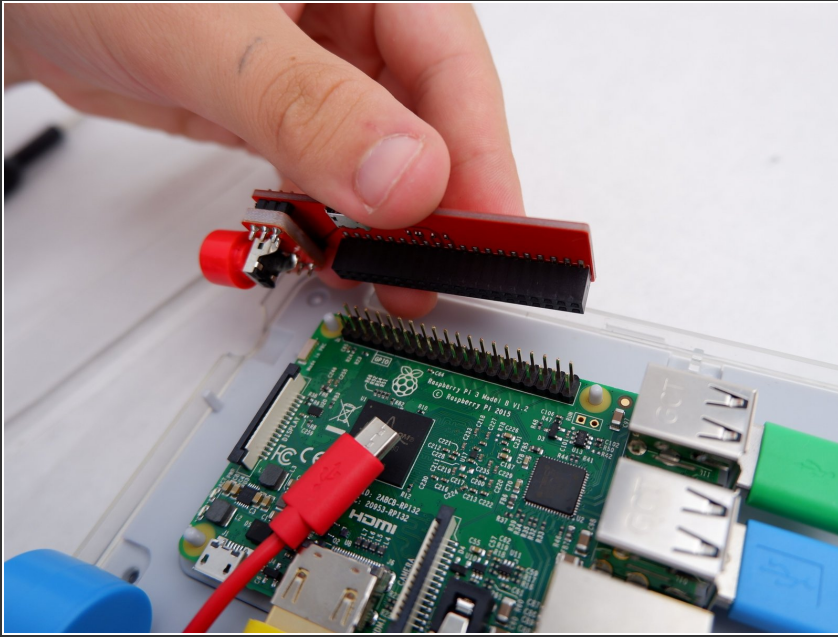
- Take off the clear backing of the computer and set it aside.
- The power button is situated on the red and black rectangular component atop the Raspberry Pi in the top left corner of the case.

Step 2



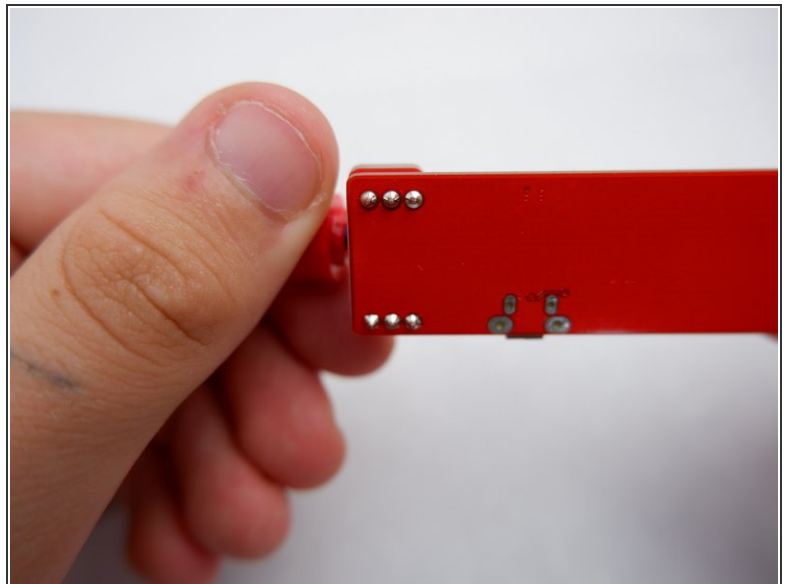
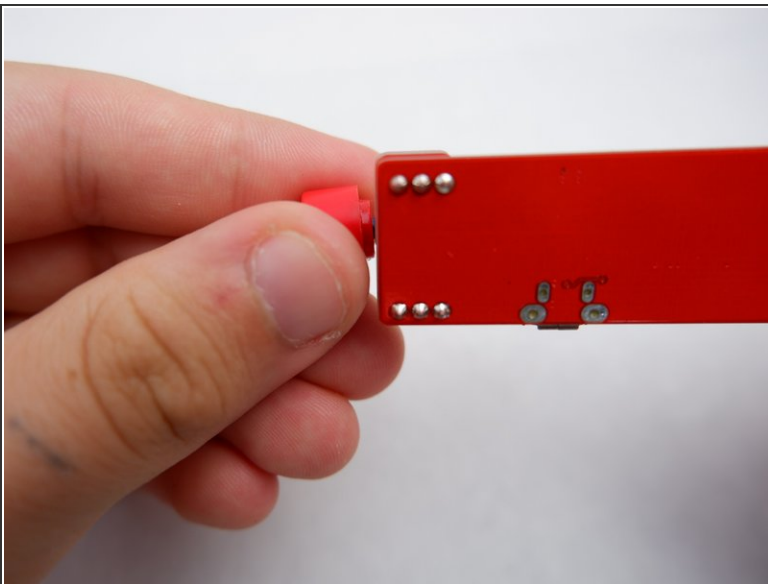
- Unplug the red cord from the power module.

Step 3



- Carefully lift the red power button off the Raspberry Pi.
- ⚠ The button will require some force to disconnect.
- ℹ Reference our [Raspberry Pi Replacement Guide Step 9](#) to see what it would look like.

Step 4



- Gently wiggle the button to get rid of excess glue.

To reassemble your device, place the power button back on the Raspberry Pi.