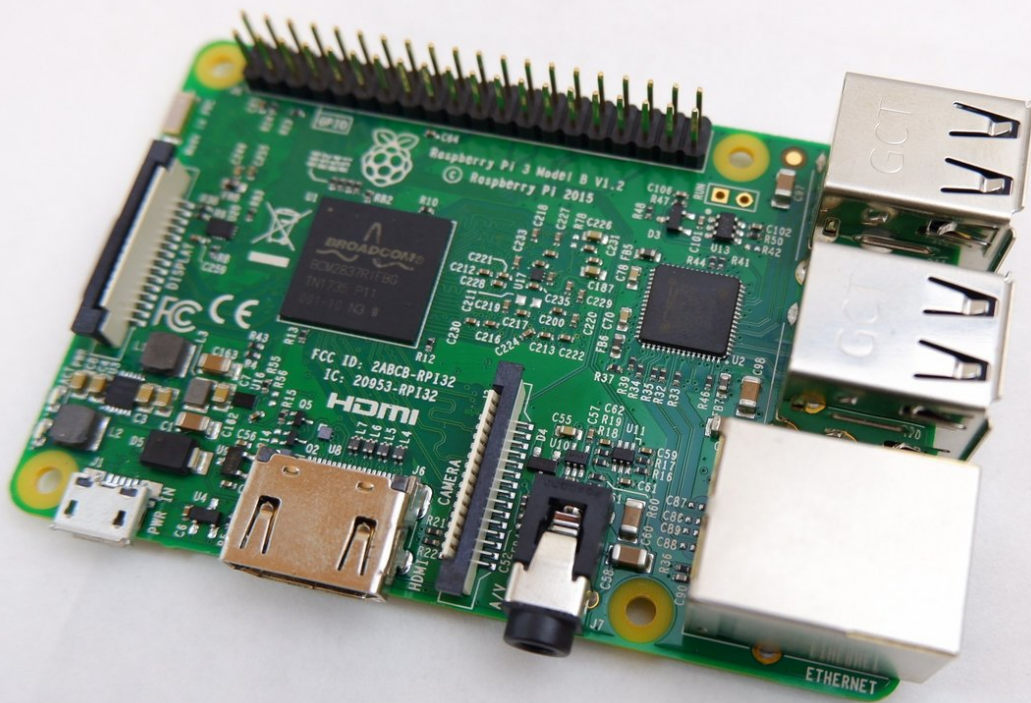




Kano Computer Kit Complete Raspberry Pi Replacement

How to replace the Raspberry Pi on the back of the Kano Computer Kit Complete screen.

Written By: Julia Sherrill



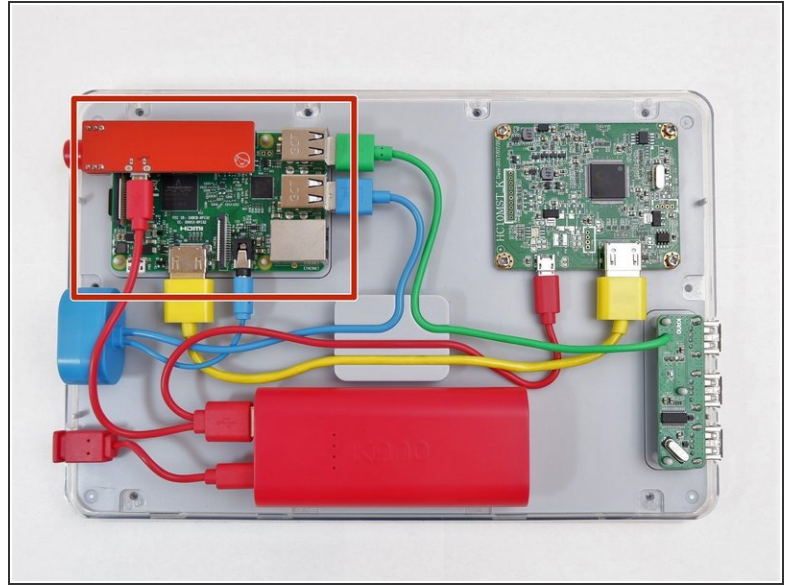
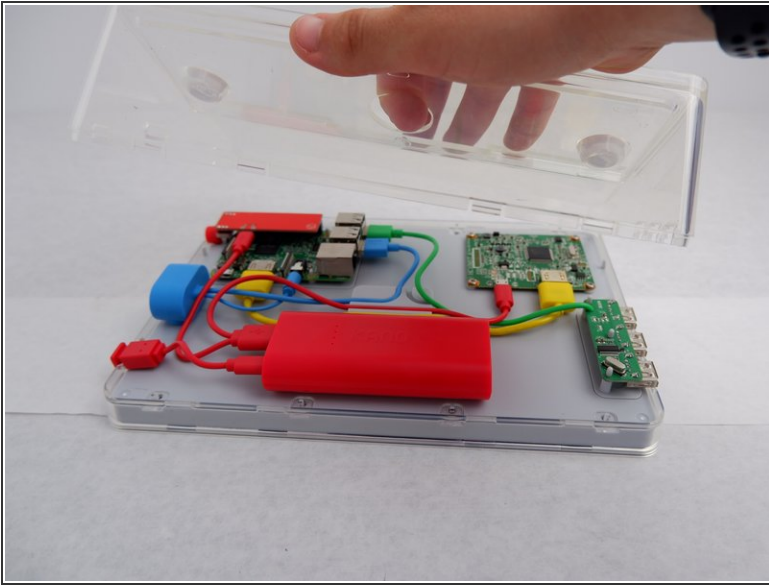
INTRODUCTION

This guide is for the replacement of the Raspberry Pi, or the brain of the computer. No tools are required to complete the following guide.

Your Raspberry Pi needs to be replaced if your Kano Computer Kit won't turn on and you know the battery is being charged properly.

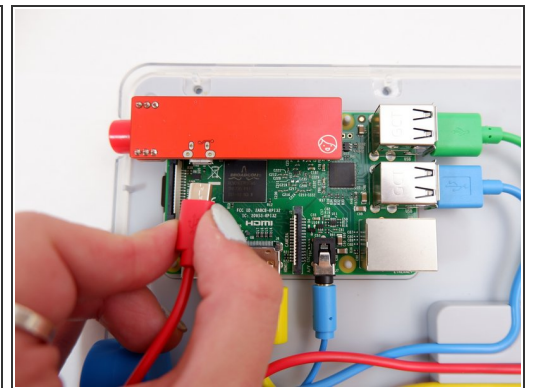
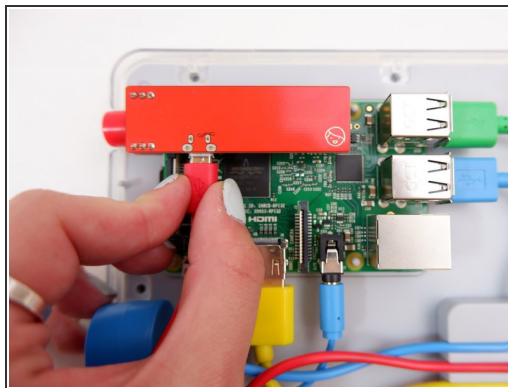
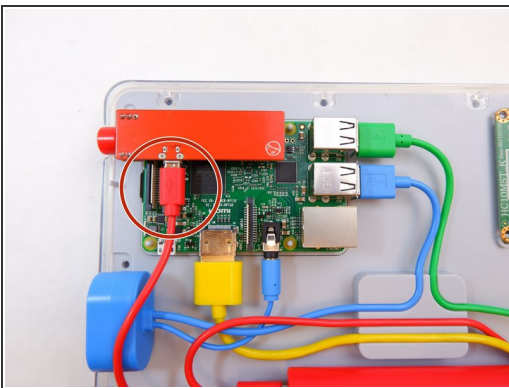
There are no tools needed for this guide except your hands.

Step 1 — Raspberry Pi



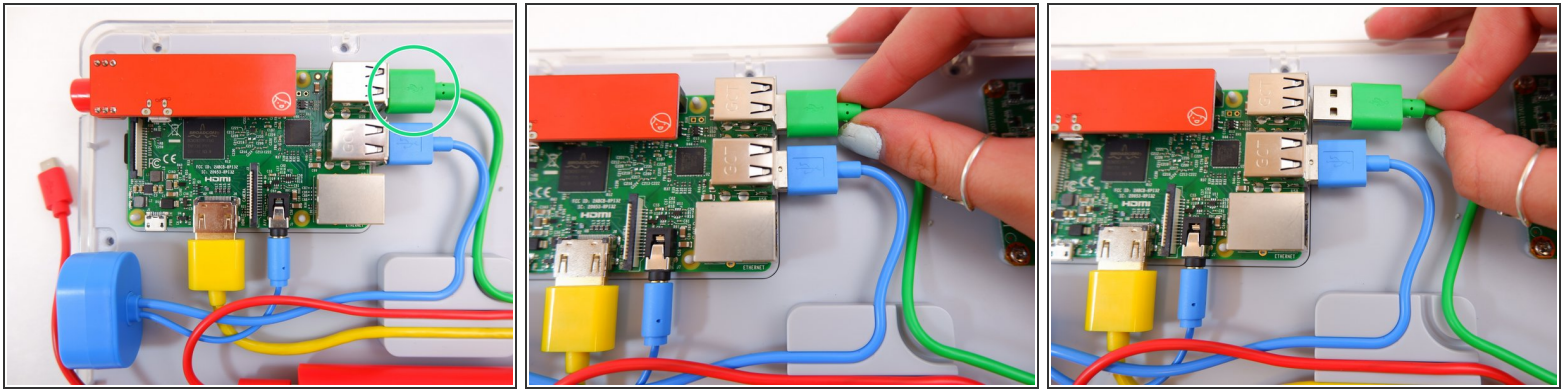
- Take off the clear backing of the computer and set it aside.
- The Raspberry Pi is located in the top right corner of the case.

Step 2



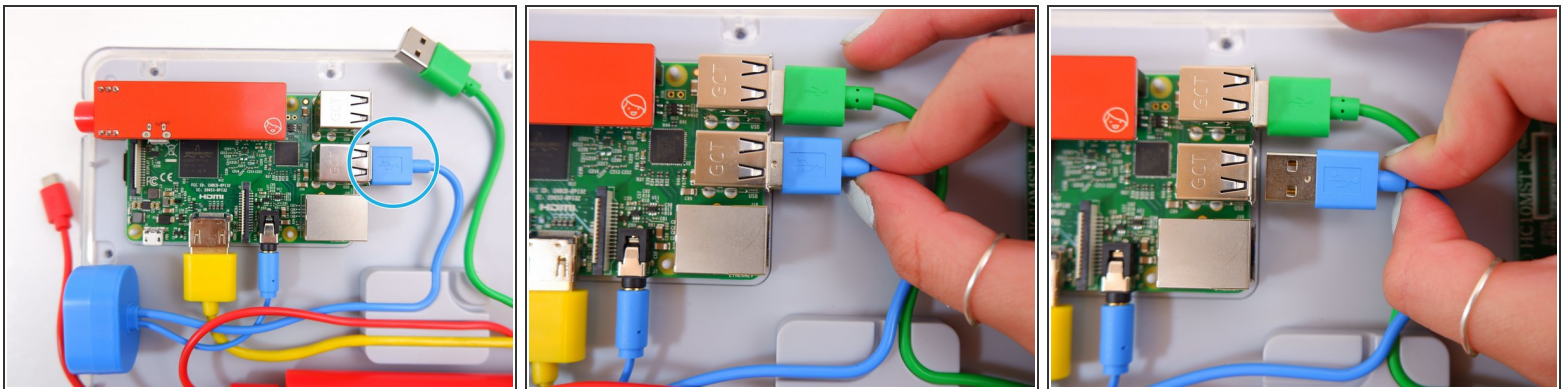
- Unplug the battery from the power button.

Step 3



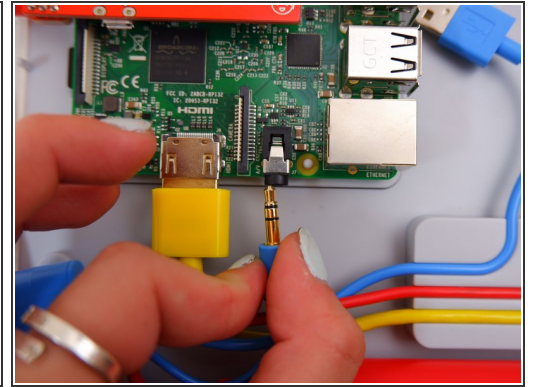
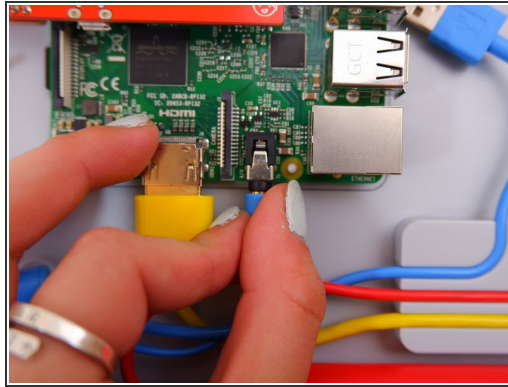
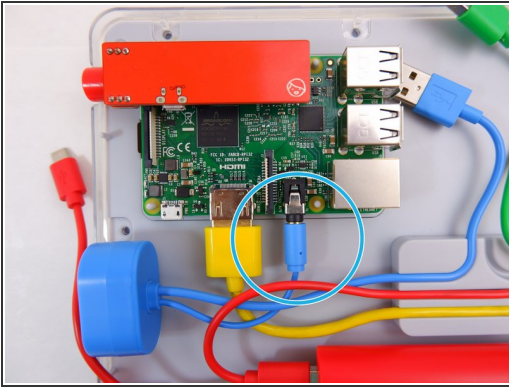
- Unplug the green cable

Step 4



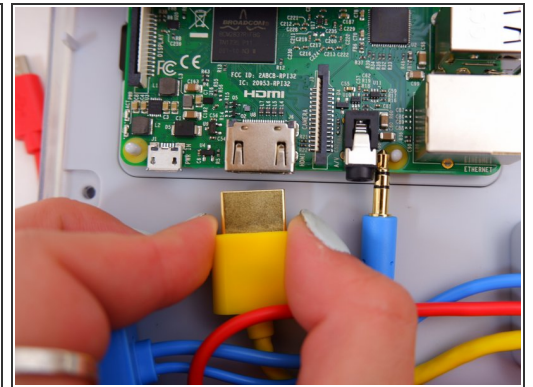
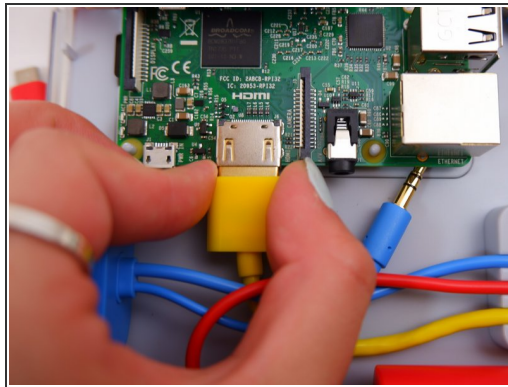
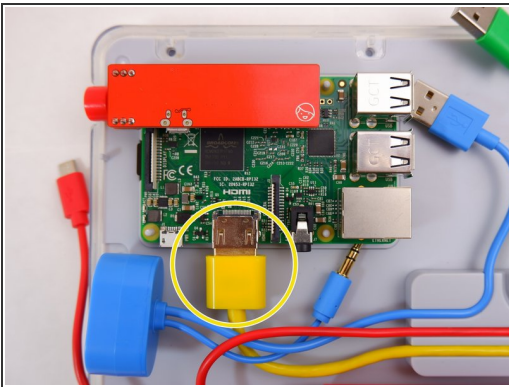
- Unplug the blue USB cable.

Step 5



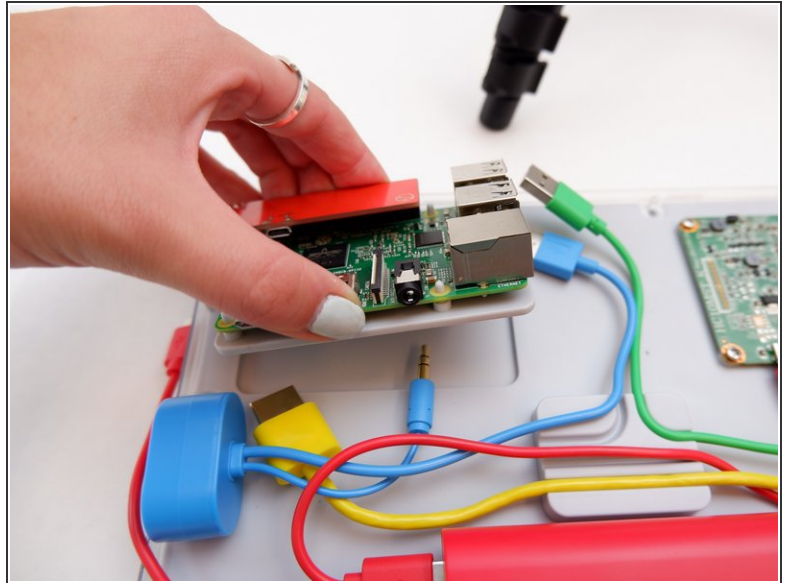
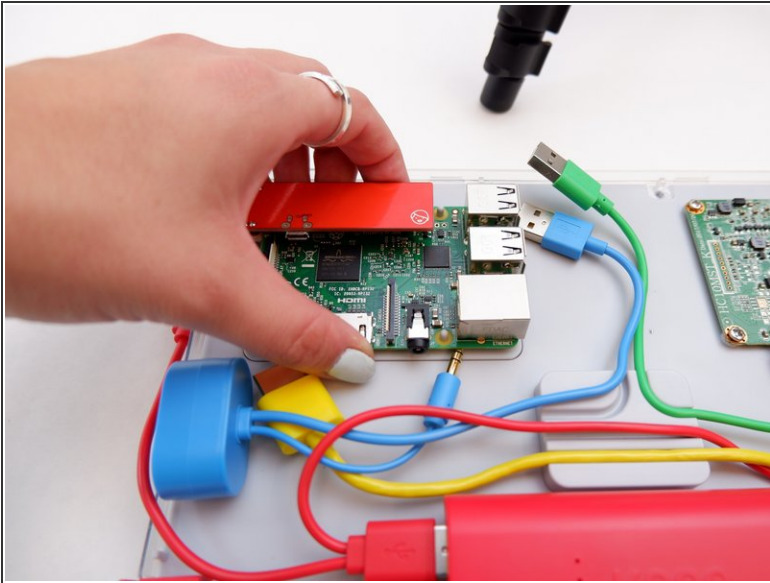
- Unplug the blue audio jack.

Step 6



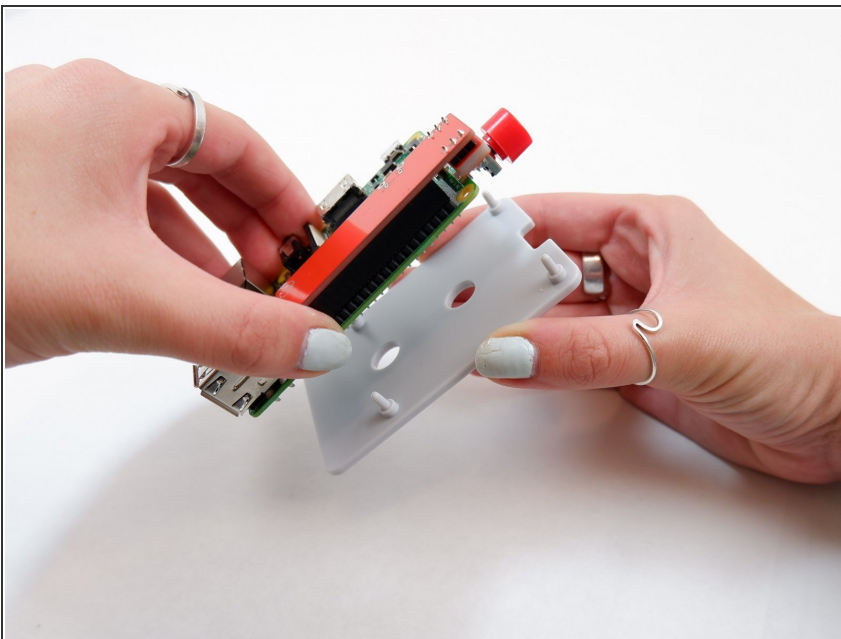
- Unplug the yellow cable.

Step 7



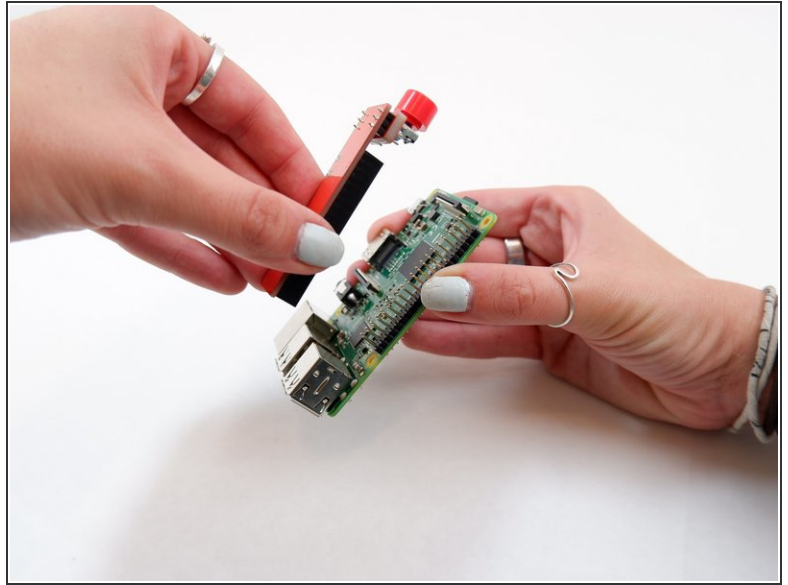
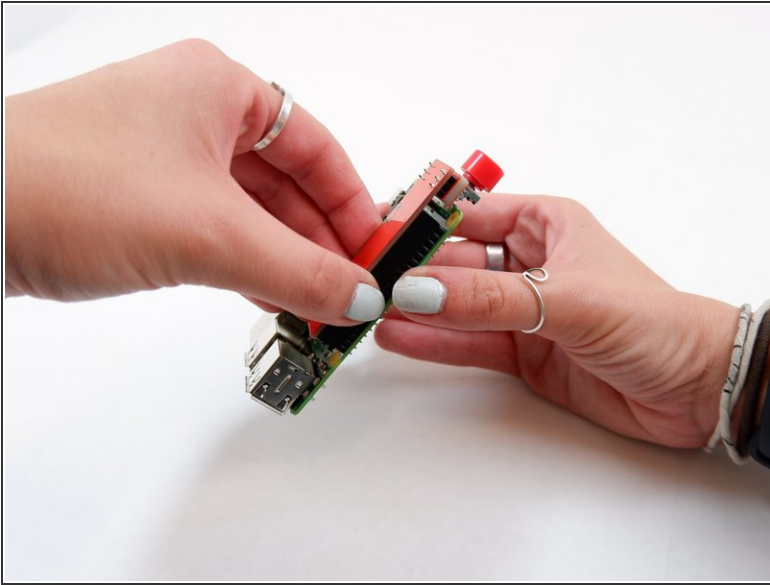
- Pop off the entire board from of the back of the screen.

Step 8



- Remove the backing off the Raspberry Pi.

Step 9



- Remove the power button from the Raspberry Pi.

To reassemble your device, follow these instructions in reverse order with the new Raspberry Pi.