

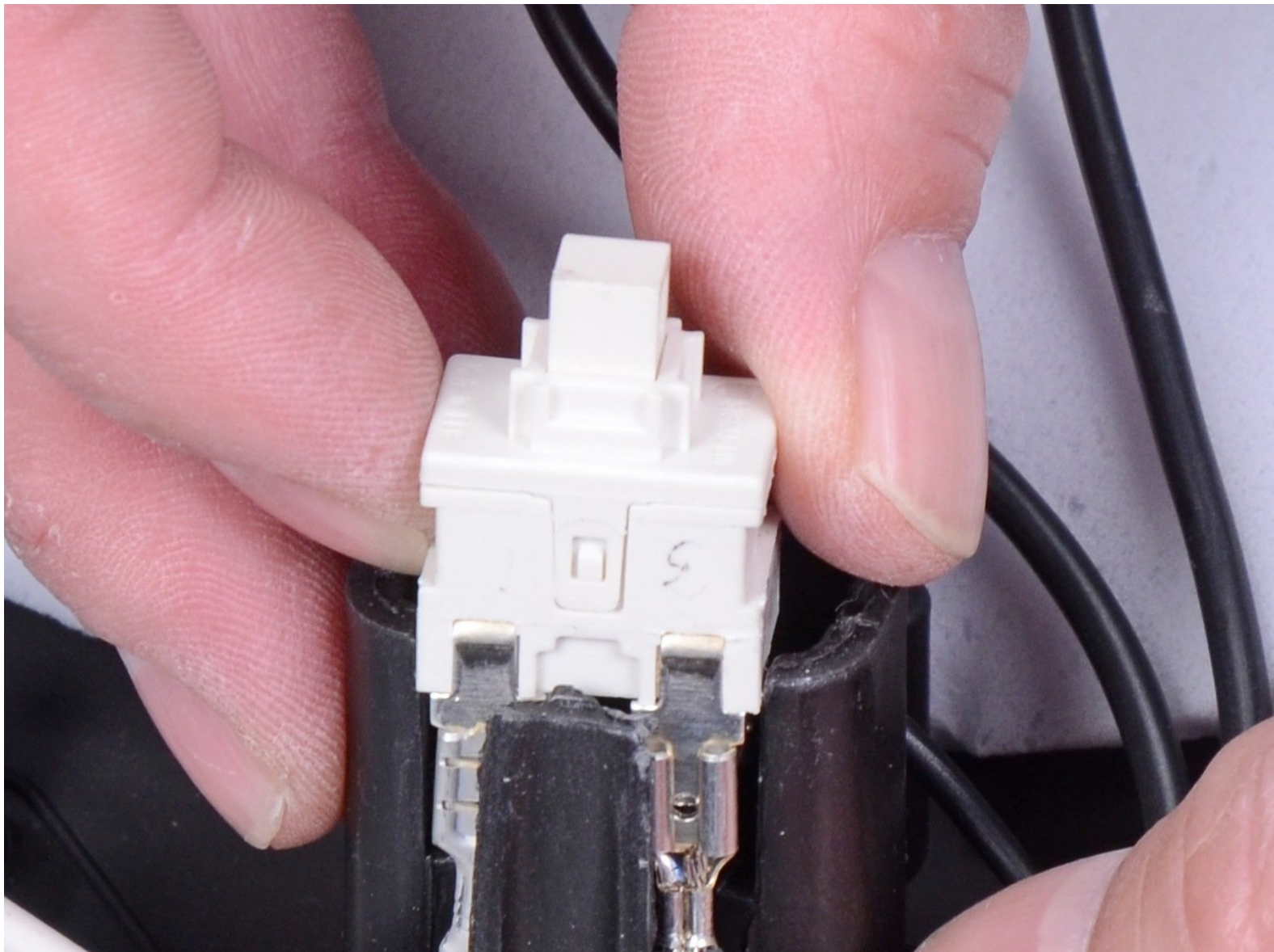


Karcher Vacuum Universal 14286230 2014

Power Switch Replacement

Remove and replace the power switch for the Karcher Vacuum Universal 14286230 2014.

Written By: Arthur Shi



INTRODUCTION

Follow this guide to remove and replace the power switch module from the Karcher Vacuum Universal 14286230 2014.



TOOLS:

- [T15 Torx Screwdriver](#) (1)



PARTS:

- [Karcher Switch On/Off 66304370](#) (1)

Step 1 — Unlatch the top assembly



i Before you begin, unplug the vacuum and disconnect all hose accessories.

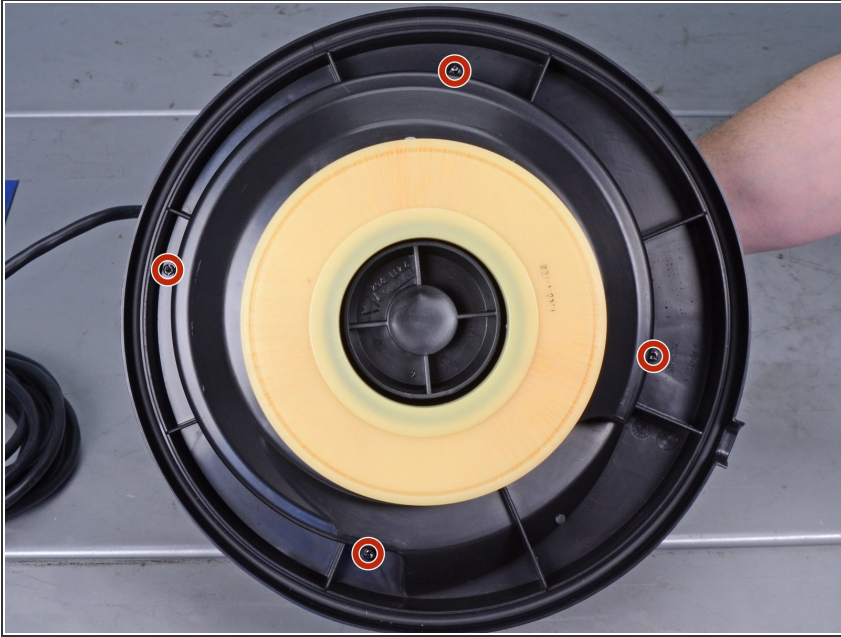
- Release the two latches locking the top assembly in place.

Step 2 — Remove the top assembly



- Lift and remove the top assembly from the tank.

Step 3 — Unscrew the top assembly



- Remove the four T15 screws securing the top assembly.


Step 4 — Remove the top cover



- Lift and remove the top plastic cover from the motor assembly.
- ⓘ These images show the assembly with the filter portion already removed. You don't have to remove the filter for this repair.

Step 5 — Reassembly tip



 **Reassembly tip:** Follow these tips to help you re-align the plastic layers:

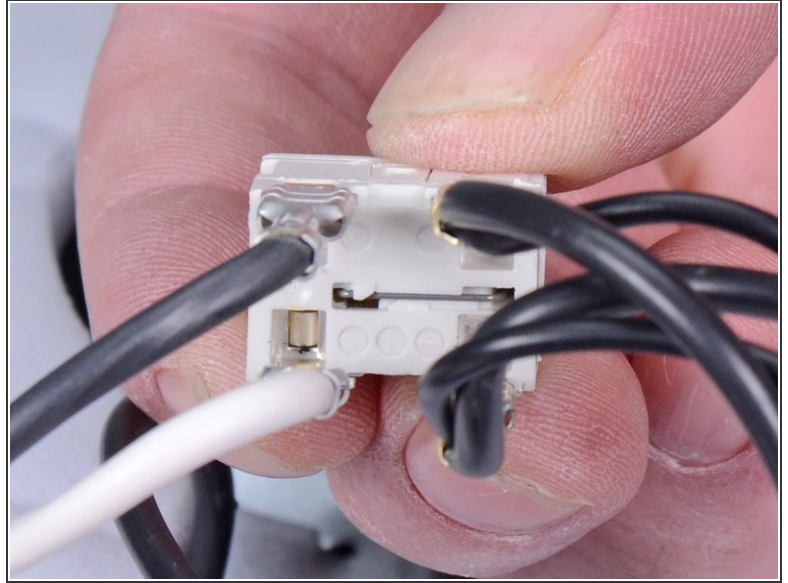
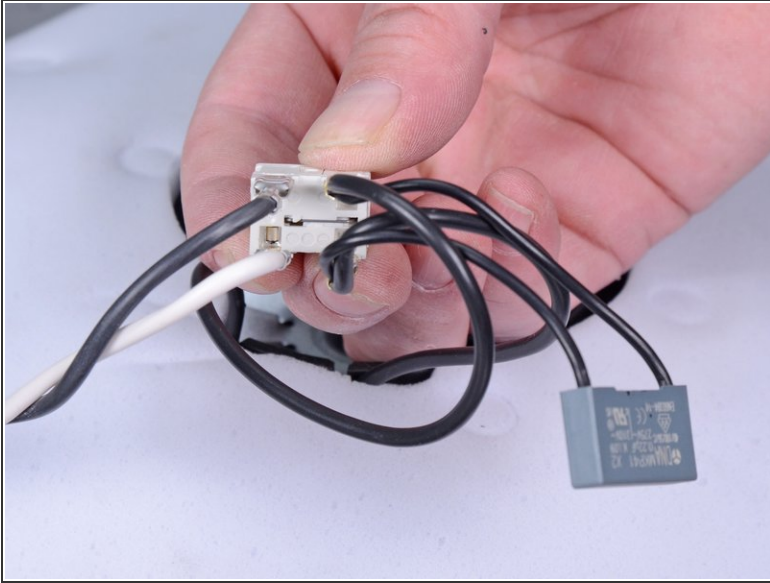
- The switch module should line up with the yellow plastic switch plunger.
- The two plastic moulded discs line up using this black tab.

Step 6 — Loosen the switch assembly



- Slide the switch assembly out of its plastic mount.

Step 7 — Disconnect the switch



- Unplug the wires from the switch. These are standard spade terminals that can be pulled apart.
- Remove the switch.

✦ **Reassembly tip:** When you plug in a new switch, use the middle image to help you properly wire the switch.

To reassemble your device, follow these instructions in reverse order.