



# Kenmore 110 Series Washing Machine Electronic Control Replacement

Replace a faulty electronic control on your Kenmore 110 Washing Machine.

Written By: Robert Trout



# INTRODUCTION

Use this guide to replace a faulty electronic control on your Kenmore 110 Washing Machine.





## TOOLS:

- [Adjustable Wrench](#) (1)
  - [Phillips #1 Screwdriver](#) (1)
  - [Socket Wrench](#) (1)
  - [5/16" Socket](#) (1)
-

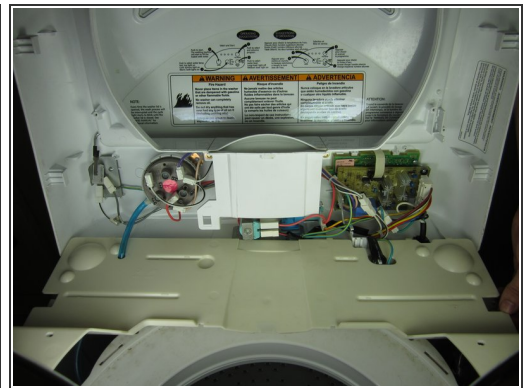
## Step 1 — Electronic Control



 **Unplug the washing machine!**

- Using a 5/16" socket wrench or an adjustable wrench, remove the three screws from the top rear of the washer.
- Lifting from the rear, remove the top panel.
-  The top panel will still be connected by wires and hoses. It will help if you have a flat raised surface to set the top panel on.

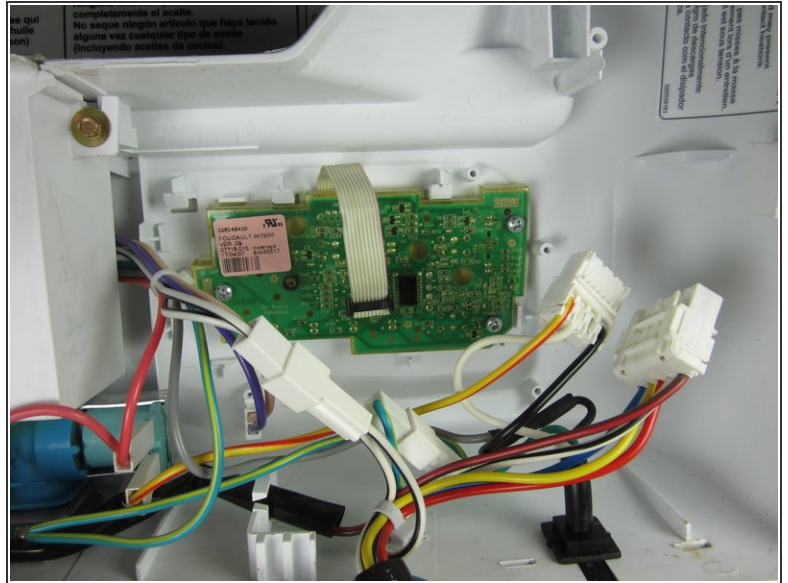
## Step 2



- Using a 5/16" socket wrench or a hand wrench, remove the two screws from the component cover.
- From the bottom, pull out and remove the component cover.



## Step 3



- Carefully remove the three wire harnesses.
- With a phillips head screwdriver, remove the three mounting screws.

To reassemble your device, follow these instructions in reverse order.