



Kenmore 80 Series Upper Agitator Not Spinning

Upper agitator not spinning under a load (or at all). Replacing agitator dogs will most likely fix the problem!

Written By: Brian Gill



INTRODUCTION

If your upper agitator is failing to turn under a load, this tutorial will easily instruct you how to apply the most probable fix using two common tools and a \$5.99 (max) readily available part.



TOOLS:

- [7/16" Socket](#) (1)
- [3/8 inch Drive Socket Ratchet Extension](#) (1)
- [Medium Flathead Screwdriver](#) (1)



PARTS:

- [Ratcheting Agitator Dog \(4Pk\)](#) (1)

80040

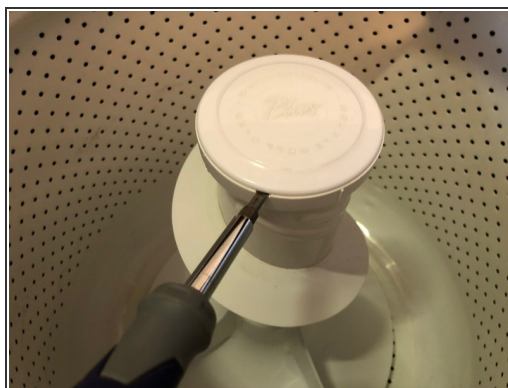
Available: Local Parts Wharehouse, Amazon, EBay, Etc.

Step 1 — Getting Started



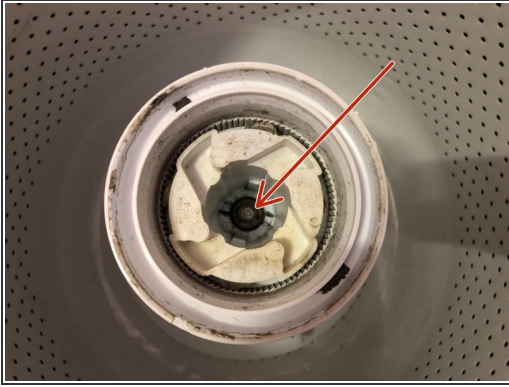
- Kenmore Series 80 (Whirlpool).
- Prior to working on unit, make sure to unplug from power source.
- Open lid to washer machine to expose interior of tub and agitator.

Step 2 — Removing The Dust Cover



- Spin agitator by hand until small notch facing front.
- Insert medium flat head screw driver into the small notch and pry cover up and off.

Step 3 — Loosening The Agitator Shaft Bolt



- Looking Straight down the cam, a 7/16" head bolt can be seen.
- Insert 7/16" socket with an extension to access the head of the bolt.
- Using free hand, hold bottom of agitator when removing bolt.
- ⓘ 'Lower agitator will try to spin when loosening agitator cam bolt.

Step 4 — Removing The Agitator



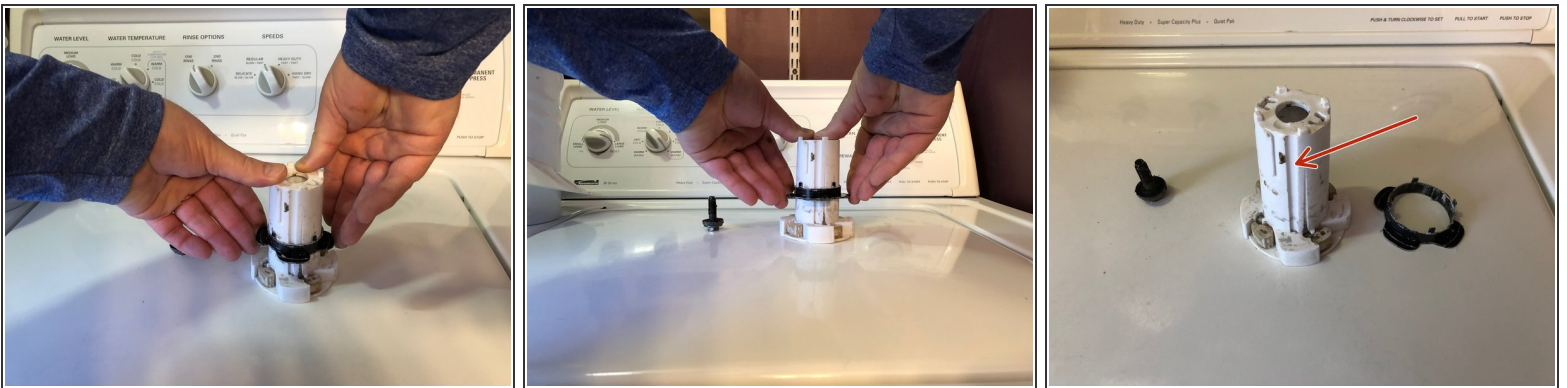
- Remove agitator from washer tub by pulling straight up.
 - Lower and upper agitator may come up together, or upper agitator may only come up.
 - If both upper and lower agitator were removed together, gently separate them.
 - Put lower agitator aside, you will be only working with the upper agitator.

Step 5 — Removing The Agitator Cam Assembly



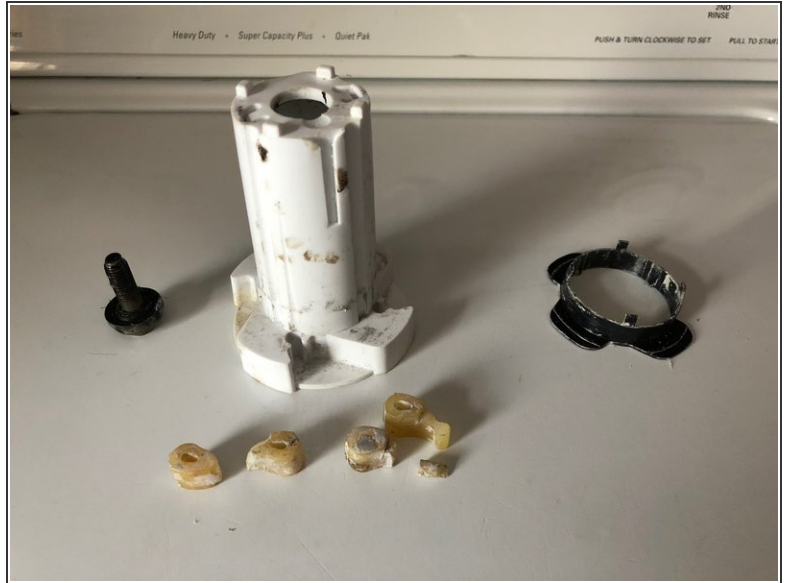
- Gently remove auger cam from the top agitator.
 - ❗ Be careful not to lose the bolt still at base of cam.
 - ❗ Worn plastic pieces of the ratcheting dogs, may have also become broken.
 - ❗ Make sure all parts come up and out!
- When removed, place cam upside down on a flat work surface.

Step 6 — Remove The Retaining Ring



- Remove the retaining ring by sliding it straight up and off the cam shaft.
 - Be cognizant, during reassembly, the retaining ring fits back into the grooves on the shaft.

Step 7 — Removing The Ratcheting Dogs



- With the retaining ring removed, you can now access the ratcheting dogs.
- Remove the 4 ratcheting dogs from their place.
- ⓘ Be sure to remove any broken pieces of the ratcheting dogs from their seat, or new dogs will not seat properly.

Step 8 — Installing New Ratcheting Dogs



- Pat # 80040: 4pk Ratcheting Dogs
 - ❗ The old ratcheting dogs should be extremely worn when compared to the new ratcheting dogs.
- Insert each new ratcheting dog into the 4 available slots
- Ensure that each ratcheting dog has free motion and is not hanging on anything.
- Project is now ready for reassembly!

To reassemble your device, follow these instructions in reverse order.