



Kenmore 80 Series Washing Machine lid switch Replacement

Any able-bodied fool can extend working life of their water-guzzling clothes washing machine.
Replaced part costs about as much as a graphic tee.

Written By: unsubstantiated



INTRODUCTION

Electric clothing-washing machines have sensor switches about doors. A switch is a moving mechanical part. In Kenmore 80, this switch can wear-out, or its plastic screw bosses can break. Workspace: have room in front of your washing machine, enough space such that it could tip over forward so its front is on floor, in front of its present position.



TOOLS:

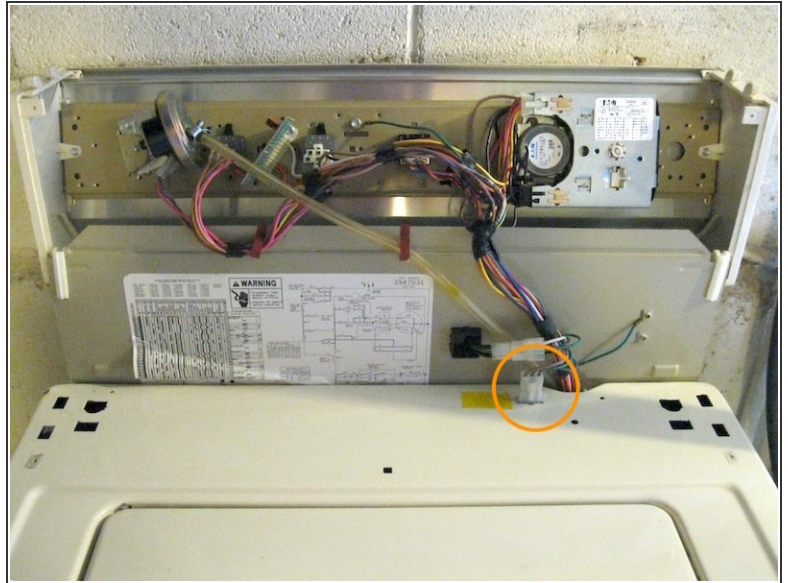
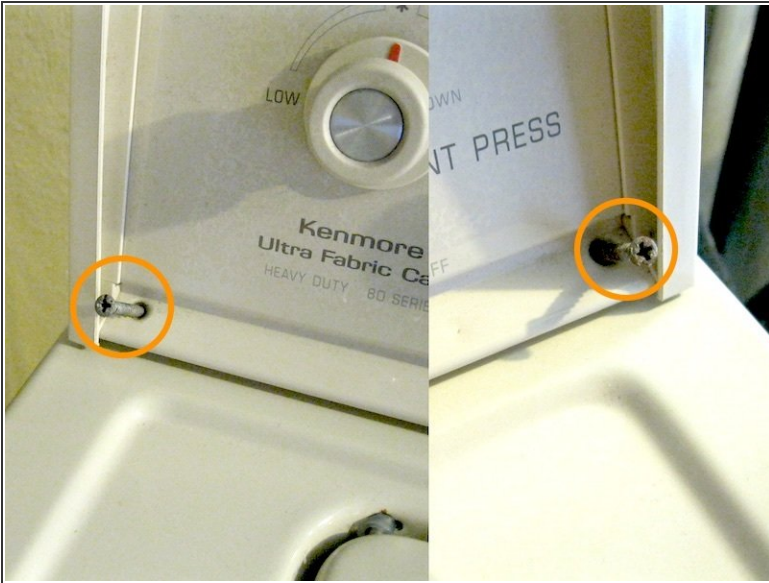
- [cruciform turnscrew](#) (1)
such as PHILLIPS #2
- [prise bar](#) (1)
or cheap chisel or other nonmalleable tool
- [5/16 inch wrench](#) (1)
socket or spanner et cetera



PARTS:

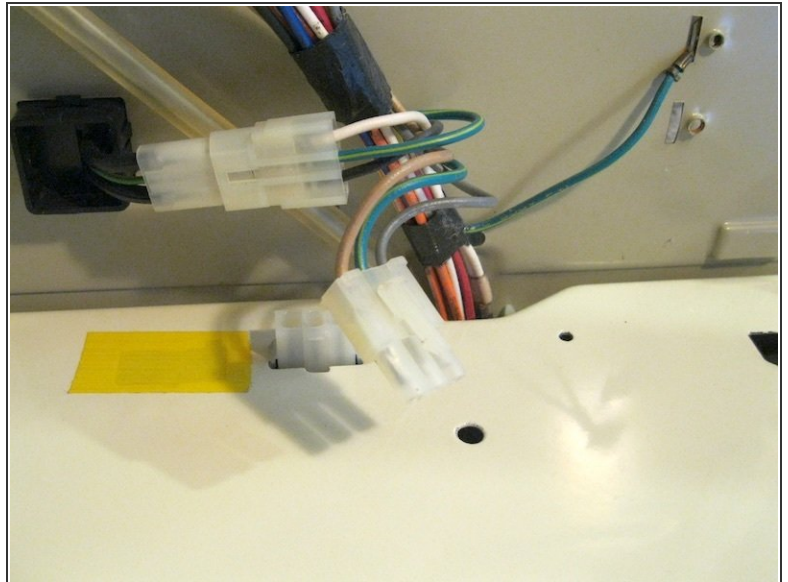
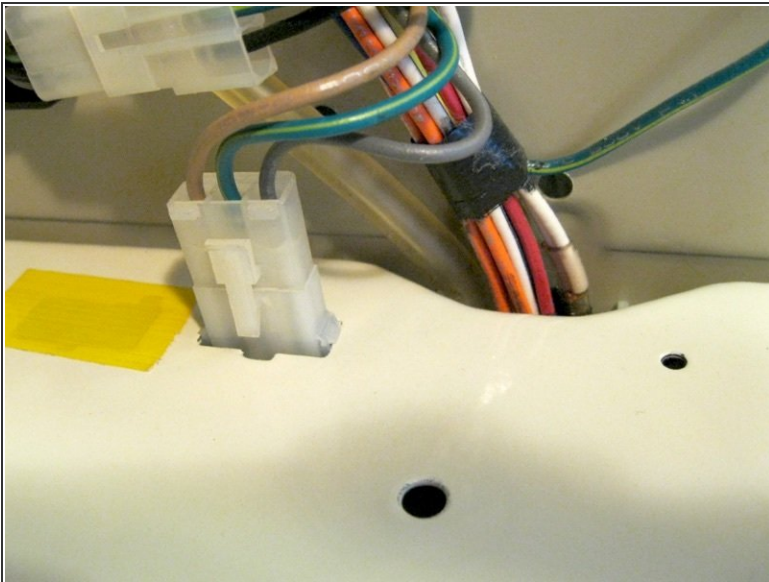
- [Switch](#) (1)
1/2 H.P. FSP® 3352630

Step 1 — open console



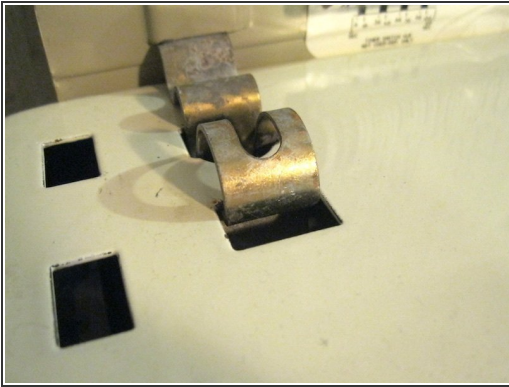
- Control panel console is fastened with two screws. Remove screws, pull bottom end of control panel forward (towards you), swing it upward, rest it in flipped position.

Step 2 — unplug switch



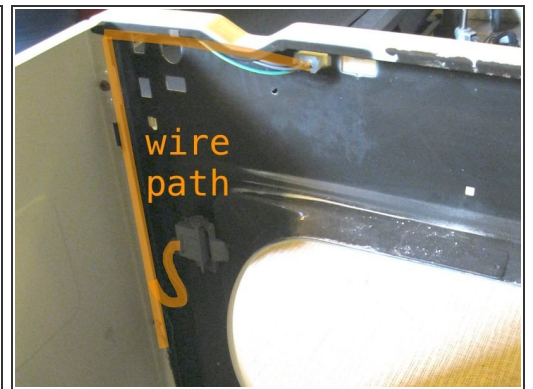
- Press on tab to release clip/latch. Grip connector, not wires, and pull it off of fixed connector.

Step 3 — open case



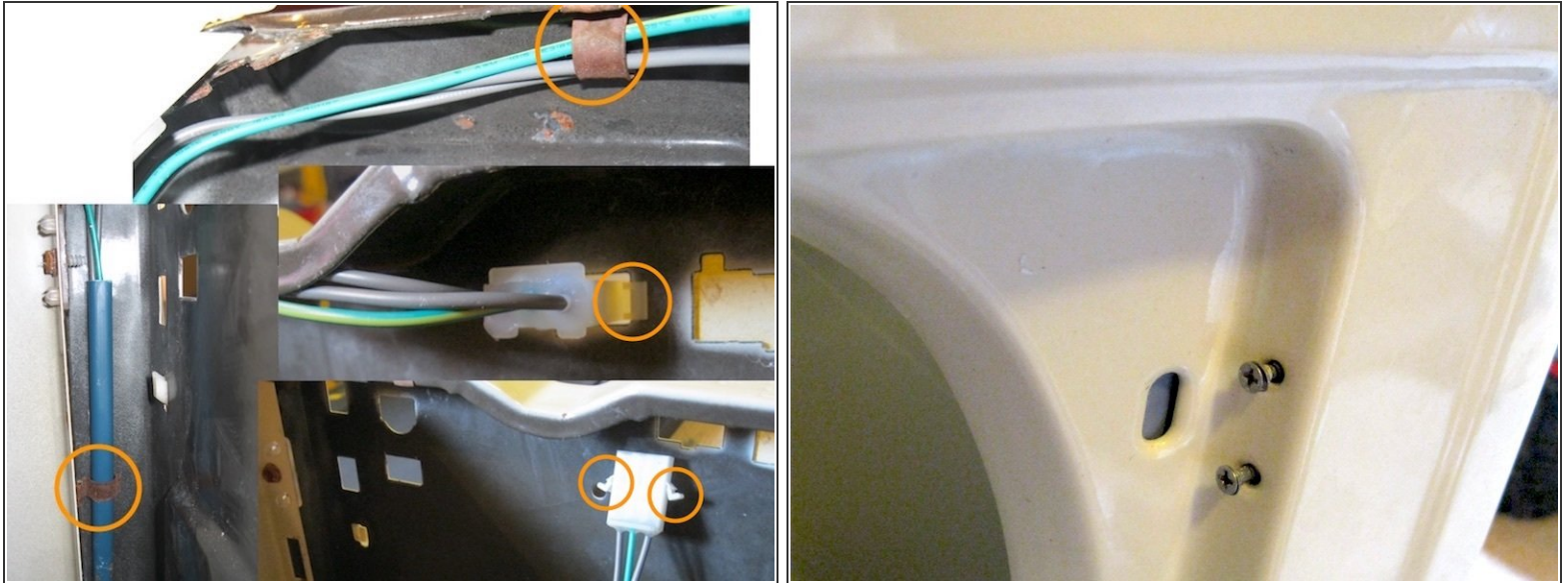
- Use prise tool to remove two case clips. Pull top of case towards you, rock case (almost whole cabinet: case top, front, left & right) on its bottom front edge as axis, lower front of case until it rests on floor.

Step 4 — remove wiring



- Case grounding wire is fastened on with one screw, 5/16 (five sixteenths) inch hexagon head. Unhook wires from the guide hooks.

Step 5 — remove switch



- Switch is fastened on with two screws.
- Remove connector from case top, squeezing connector's panel mount tabs to free it. when replacing: Face connector with its wedge bump facing forward.

To reassemble your device, follow these instructions in reverse order.