



Kenwood DNX571HD LCD Touch Screen Replacement

Replace an old or damaged touch screen for the Kenwood DNX571HD car stereo.

Written By: Wendy Zaballos



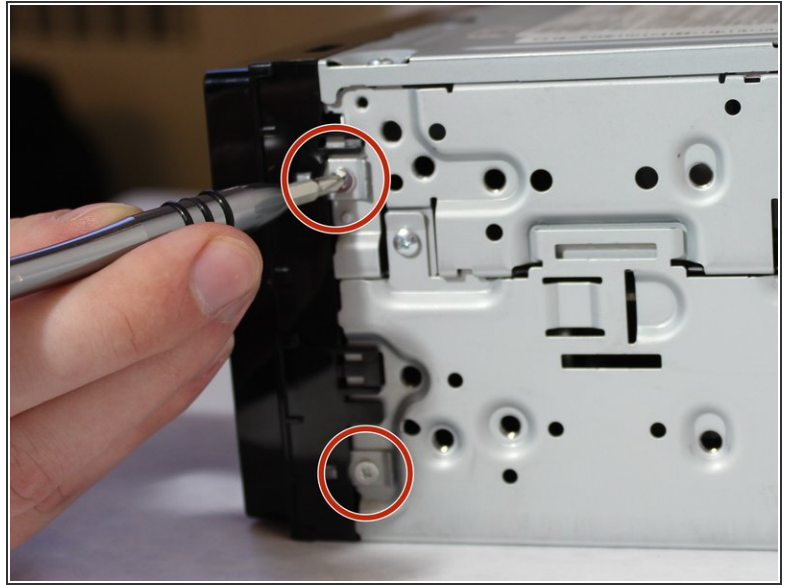
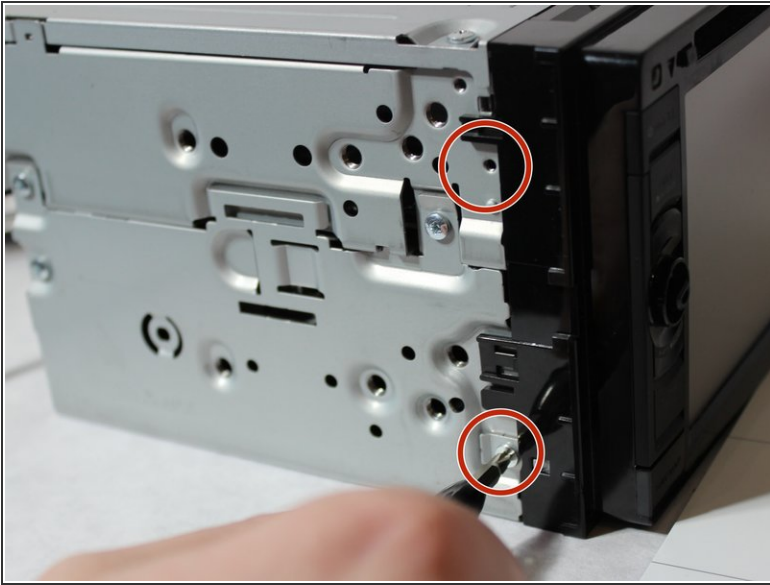
INTRODUCTION

If your screen has been damaged and needs to be replaced, this guide will provide the steps to remove the old screen and replace it with a new one.

TOOLS:

- [Spudger](#) (1)
 - [Phillips #1 Screwdriver](#) (1)
 - [ESD Safe Tweezers Blunt Nose](#) (1)
 - [JIS #00 Screwdriver](#) (1)
-

Step 1 — LCD Touch Screen

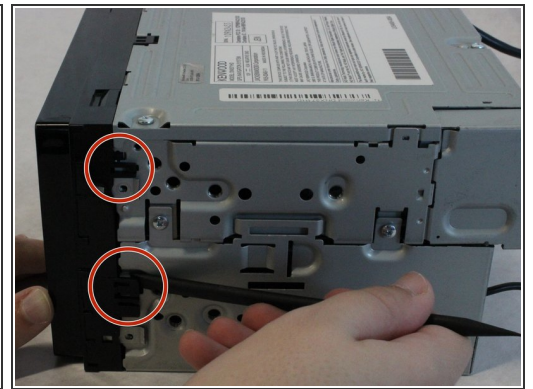
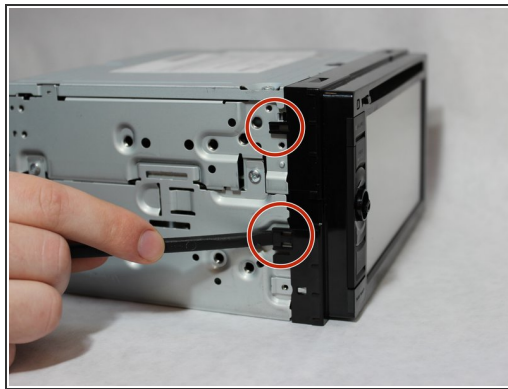


⚠ Turn off the stereo and remove from the vehicle before starting.

- Unscrew the four 3.5mm side screws with a Phillips #1 screwdriver.

i There are two screws per side.

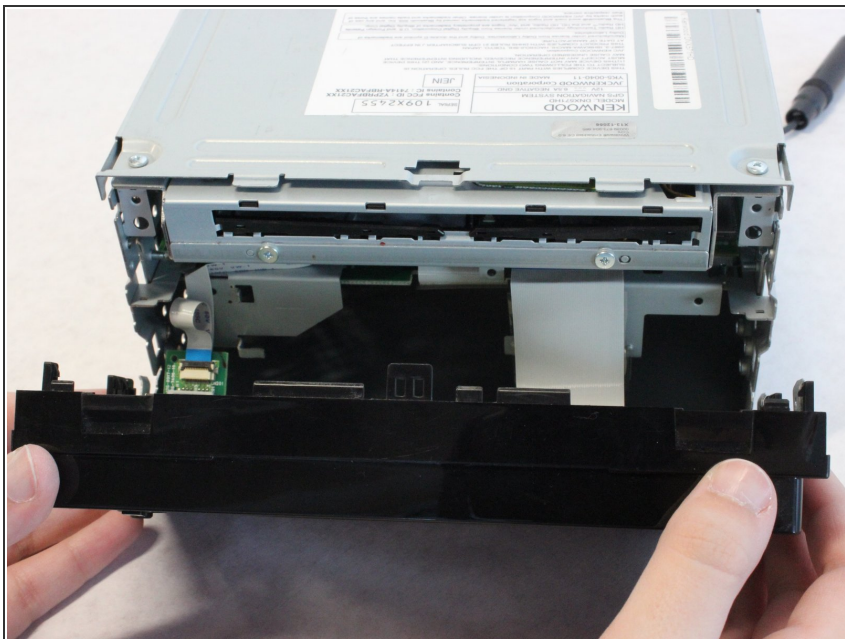
Step 2



- Use a spudger to unhook the plastic clips on the sides and top of the front panel. There are two clips on each side and one clip on the top.

i Place the spudger between the plastic tab and the metal case and gently lift the spudger away from the case.

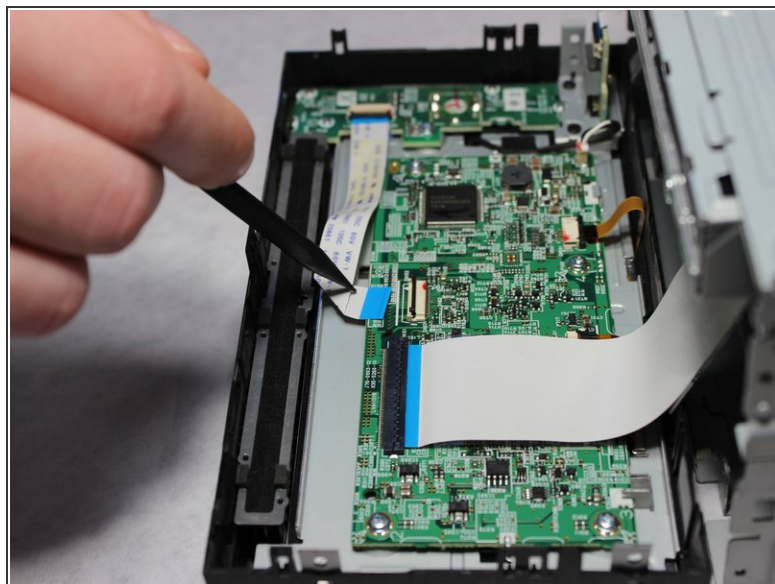
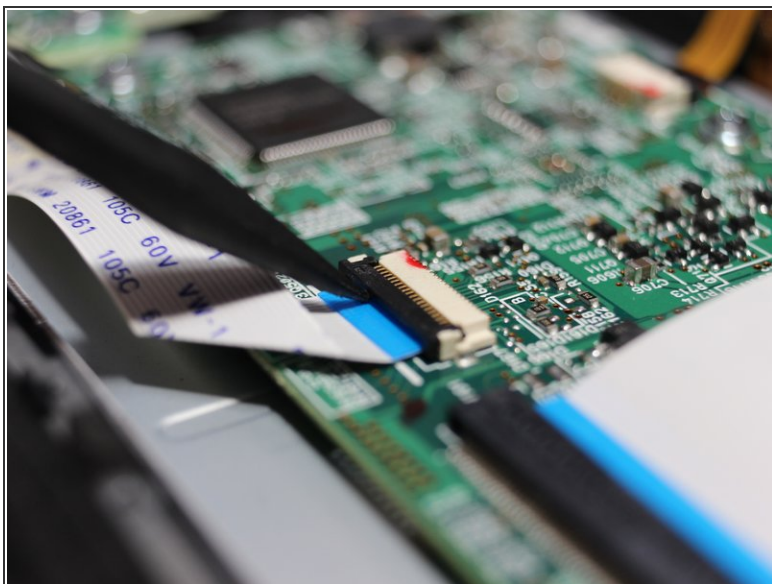
Step 3



- Pull the top of the front panel out and down to remove front panel.

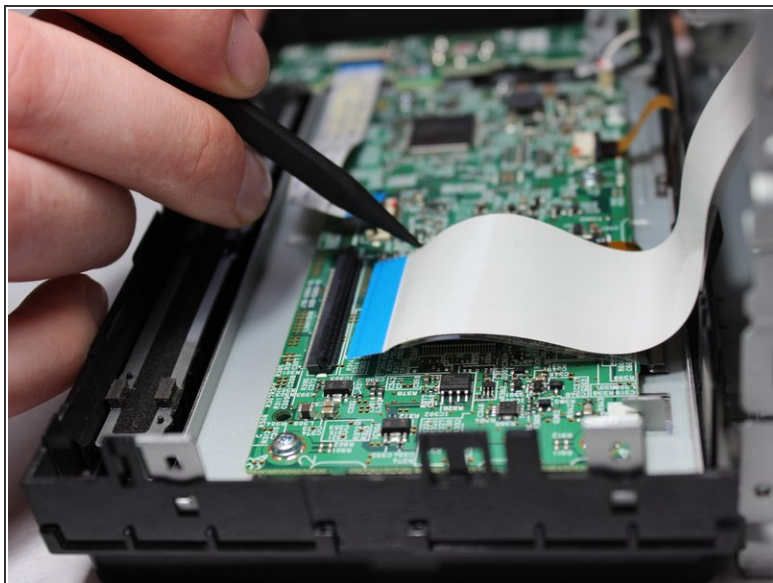
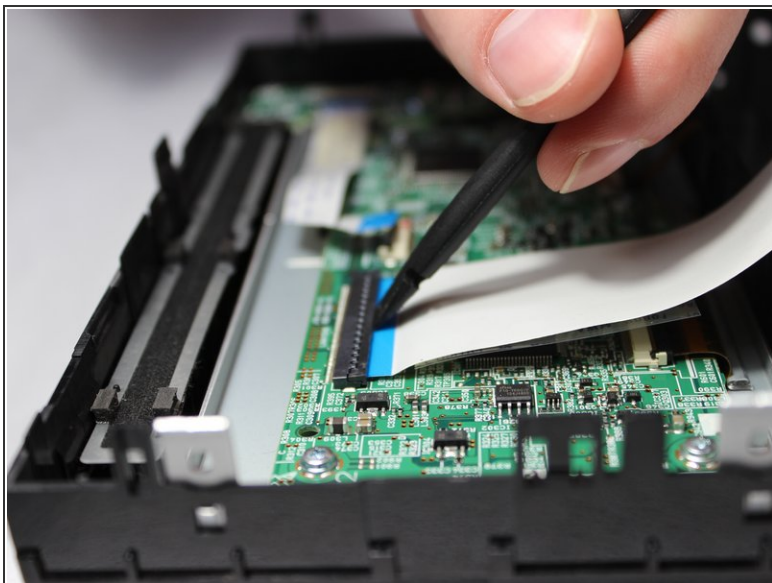
⚠ Remove the front panel gently so as not to damage the ribbon cables behind it.

Step 4



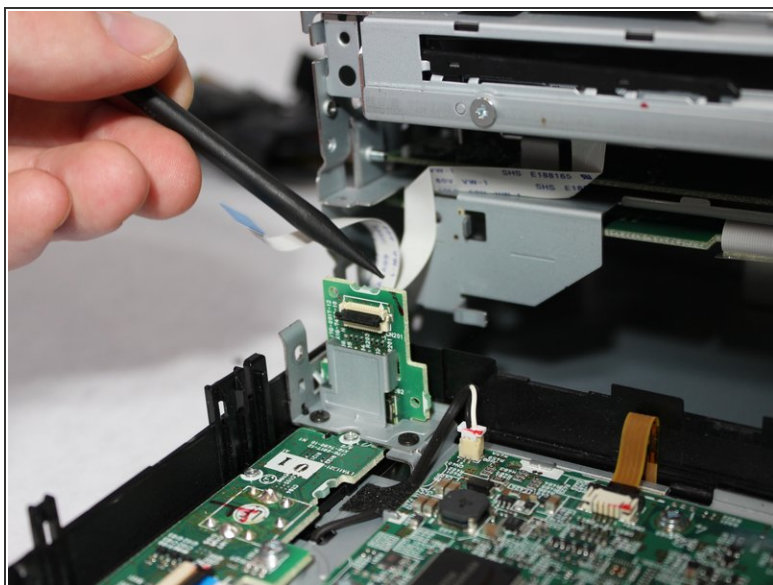
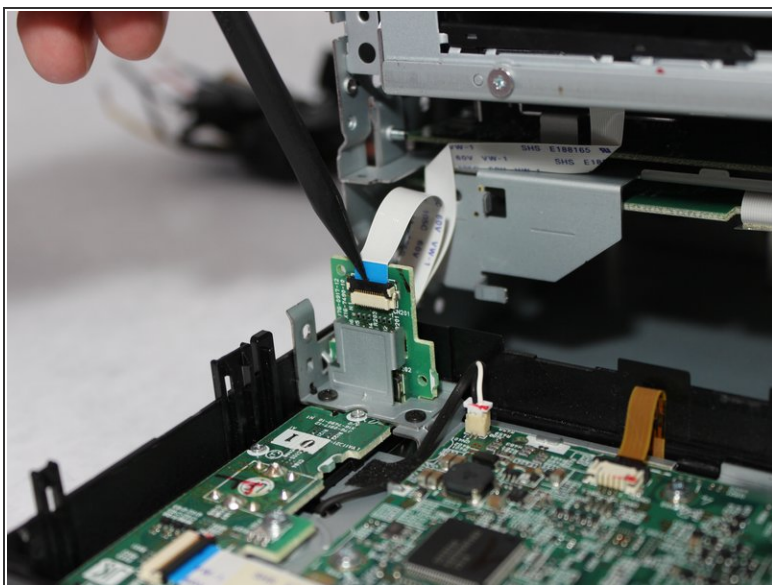
- Flip up the black clasp with the spudger to disconnect the small white ribbon cable from the main board.

Step 5



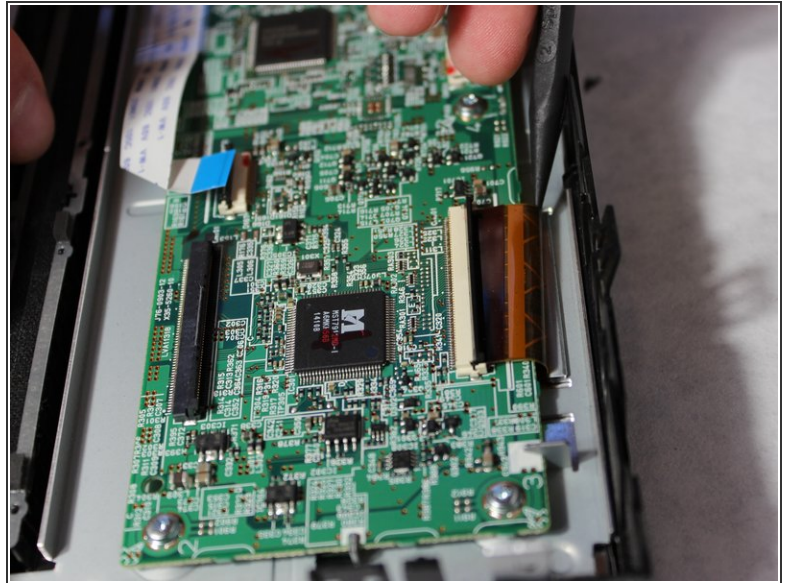
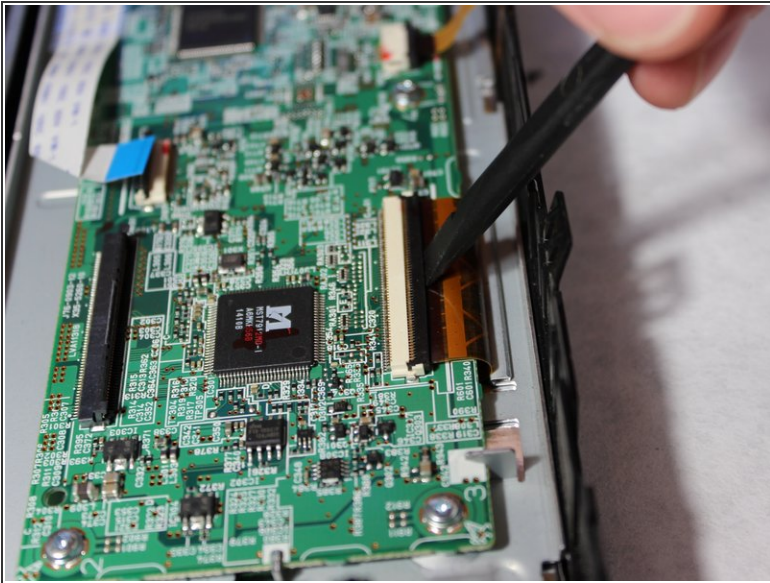
- Flip up the black clasp with the spudger to disconnect the large white ribbon cable from the main board.

Step 6



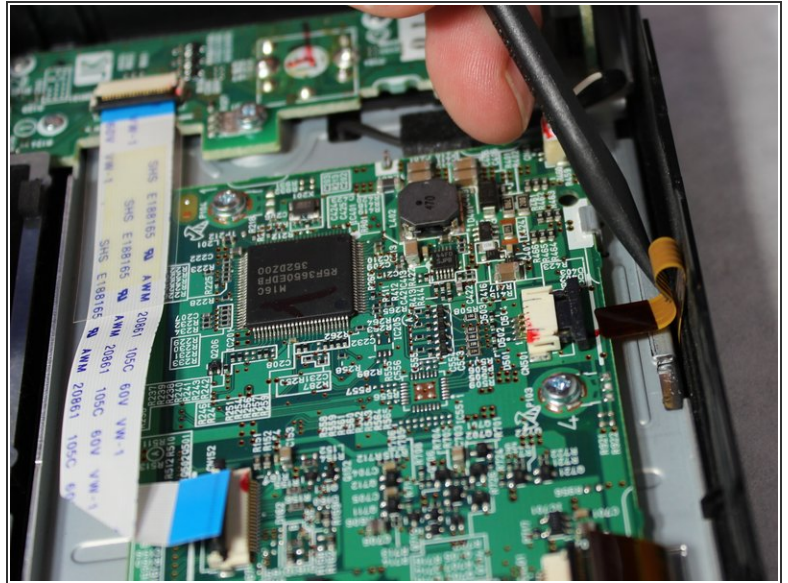
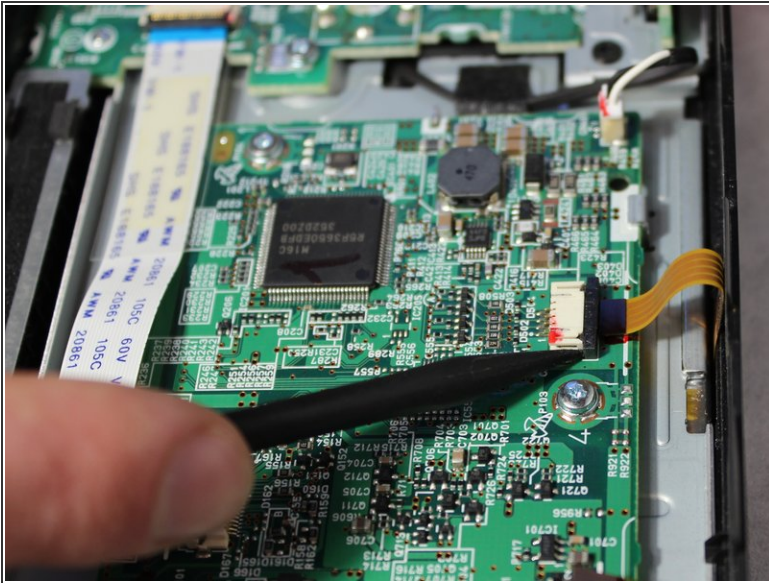
- Flip up the black clasp with the spudger to disconnect the small white ribbon cable from the vertical board.
- Carefully pull the ribbon from the clasp with the spudger.

Step 7



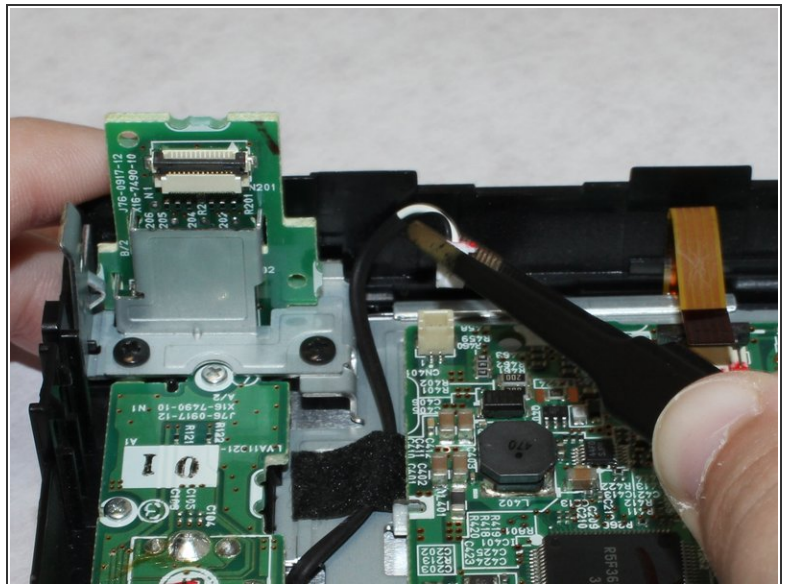
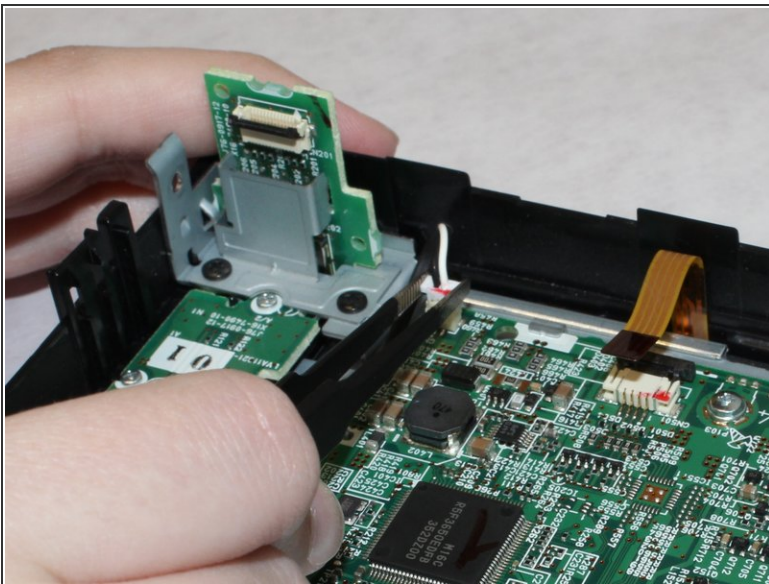
- Flip up the black clasp with the spudger to disconnect the large orange ribbon cable from the main board.
- Carefully pull the ribbon from the clasp with the spudger.

Step 8



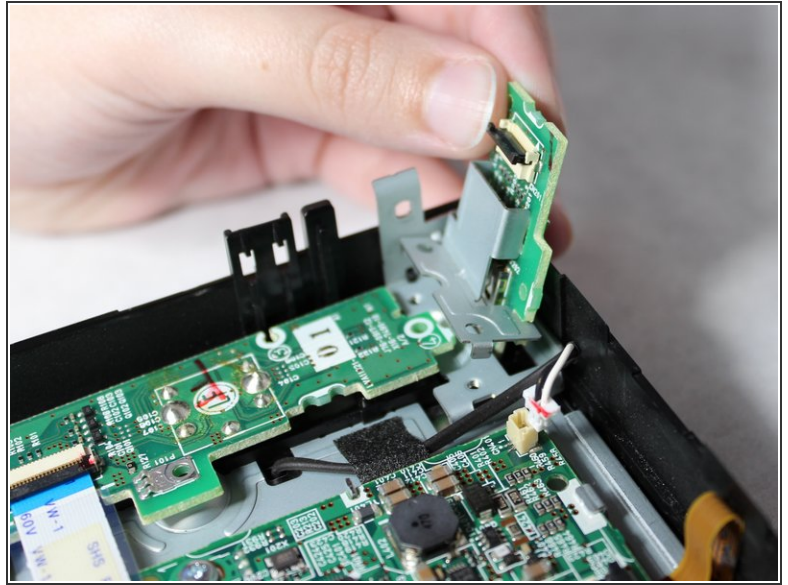
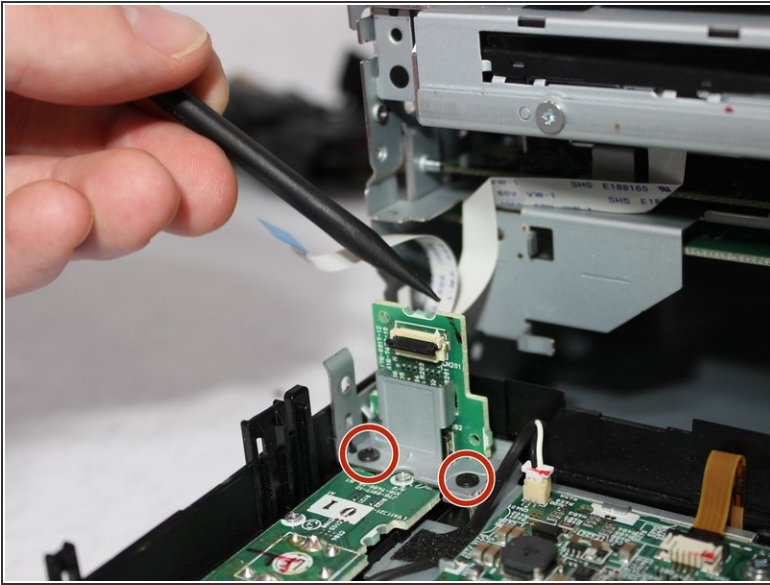
- Push out the black clasp with the spudger to disconnect the small orange ribbon cable from the main board.
- Gently push the ribbon out of the clasp with the spudger.

Step 9



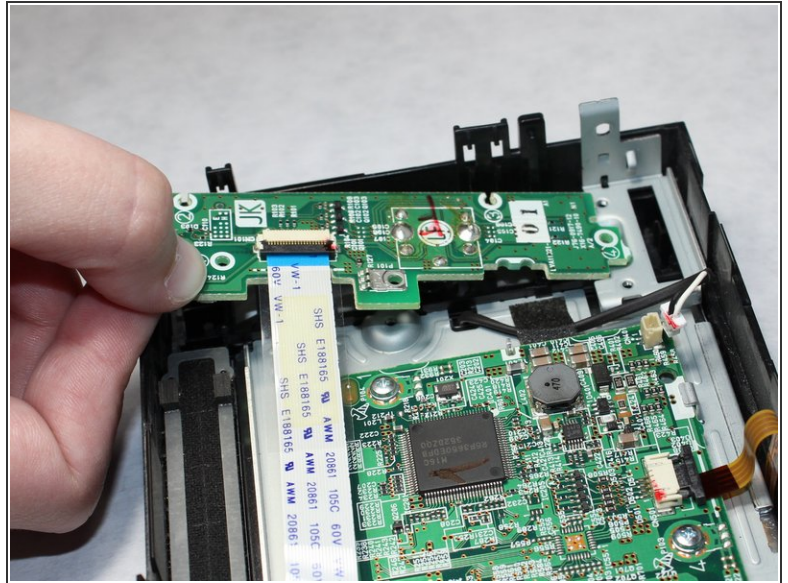
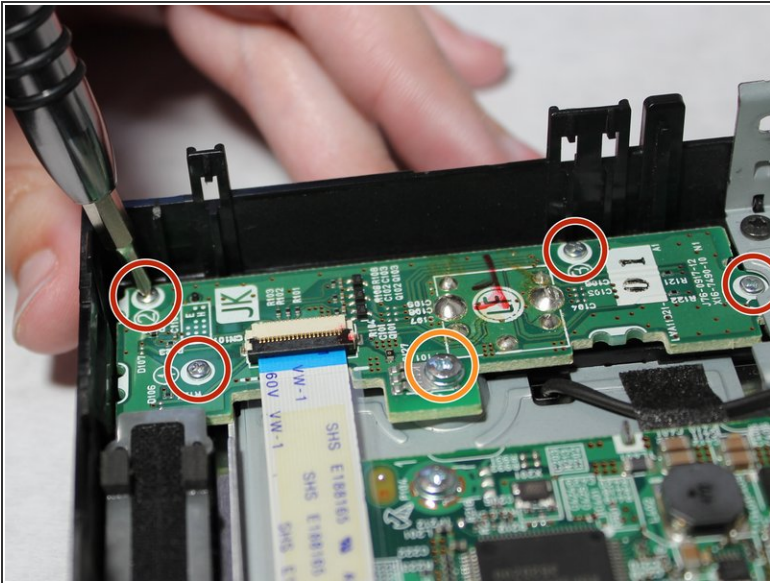
- Using a pair of tweezers, gently pull up on the connector for the power cable to disconnect it from the main board.

Step 10



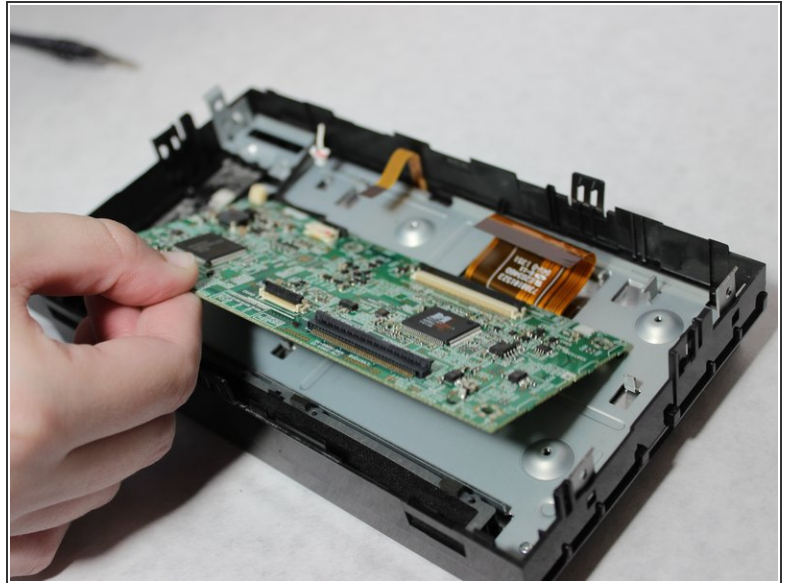
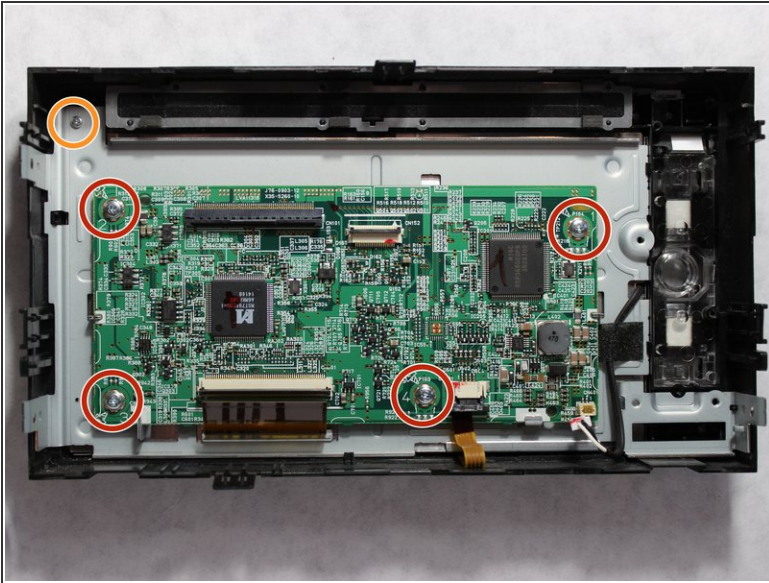
- Unscrew the two 4mm screws holding down the board that is standing vertically with a Phillips #1 screwdriver.
- Pull up on the board to remove it.

Step 11



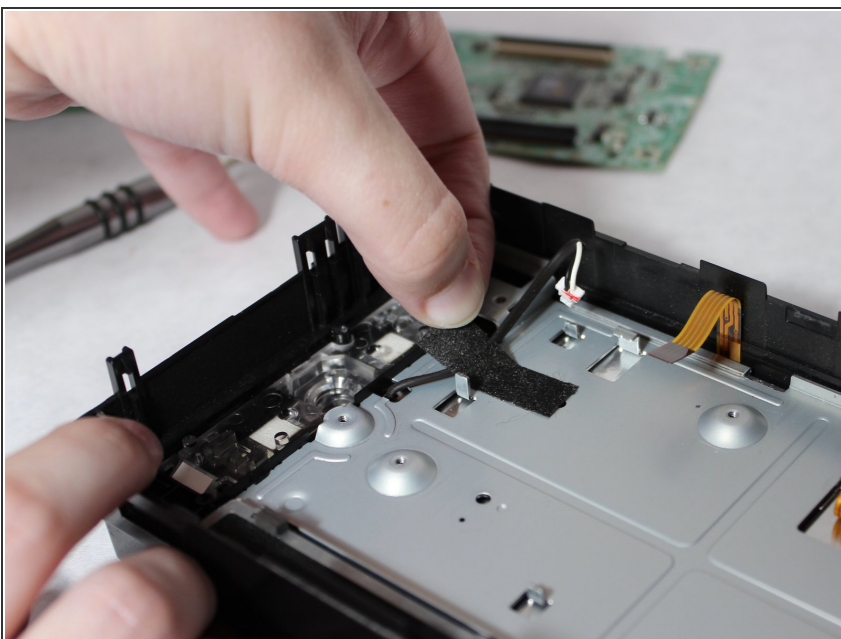
- Unscrew the four 5.5mm screws with a JIS #00 screwdriver.
- Unscrew the 4mm screw with a Phillips #1 screwdriver.
- Remove the disconnected circuit board.

Step 12



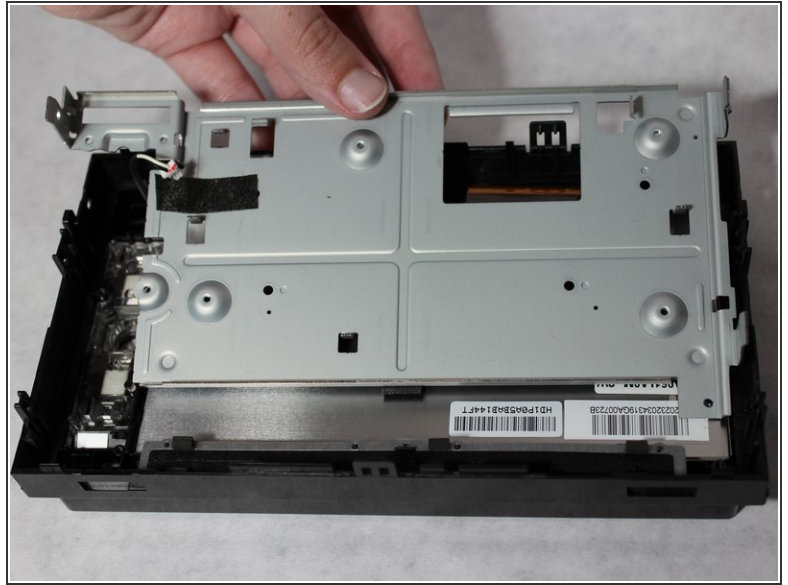
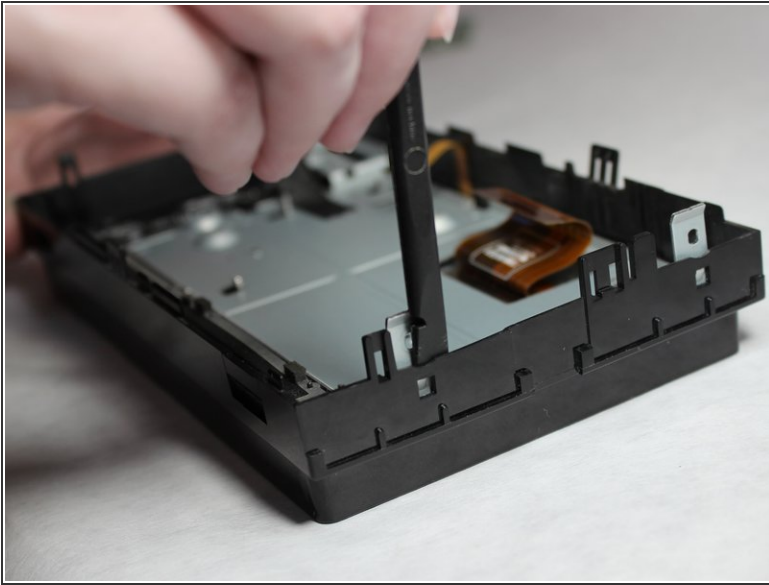
- Unscrew the four 4mm screws on the main board with a Phillips #1 screwdriver.
- Gently lift the board out of the casing.
- Unscrew the 5.5mm screw on the metal plate with a JIS #00 screwdriver.

Step 13



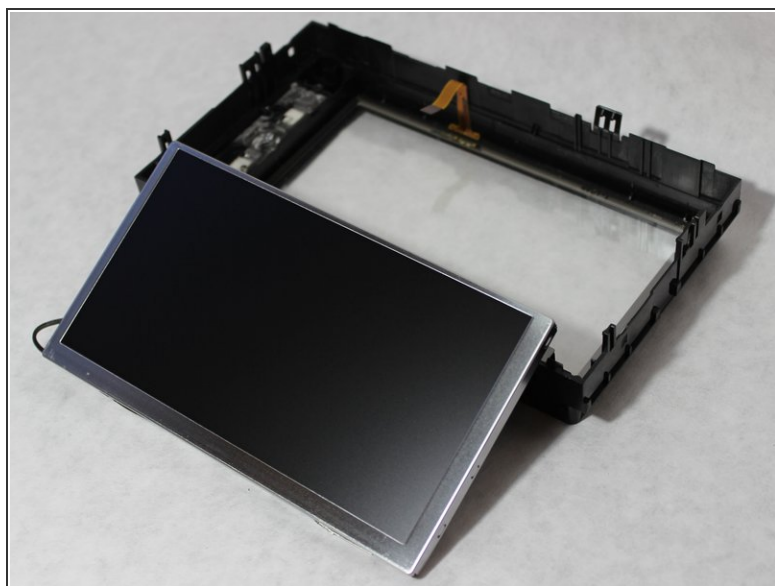
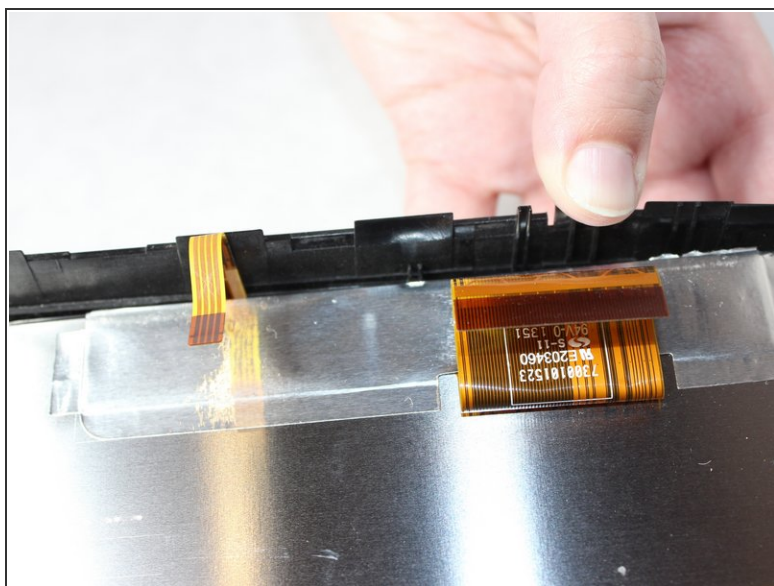
- Carefully remove the tape attaching the power cable to the metal plate.

Step 14



- Use the spudger to unhook the metal tabs and detach the metal plate from the plastic housing.
- ⓘ Place the spudger between the metal tab and the plastic case and gently lift the spudger away from the case.

Step 15



- Gently press the front of the screen to detach it from the plastic housing.
- ⓘ When removing the screen, gently flex out the plastic housing to help get the display past the plastic latch.

To reassemble your device, follow these instructions in reverse order.