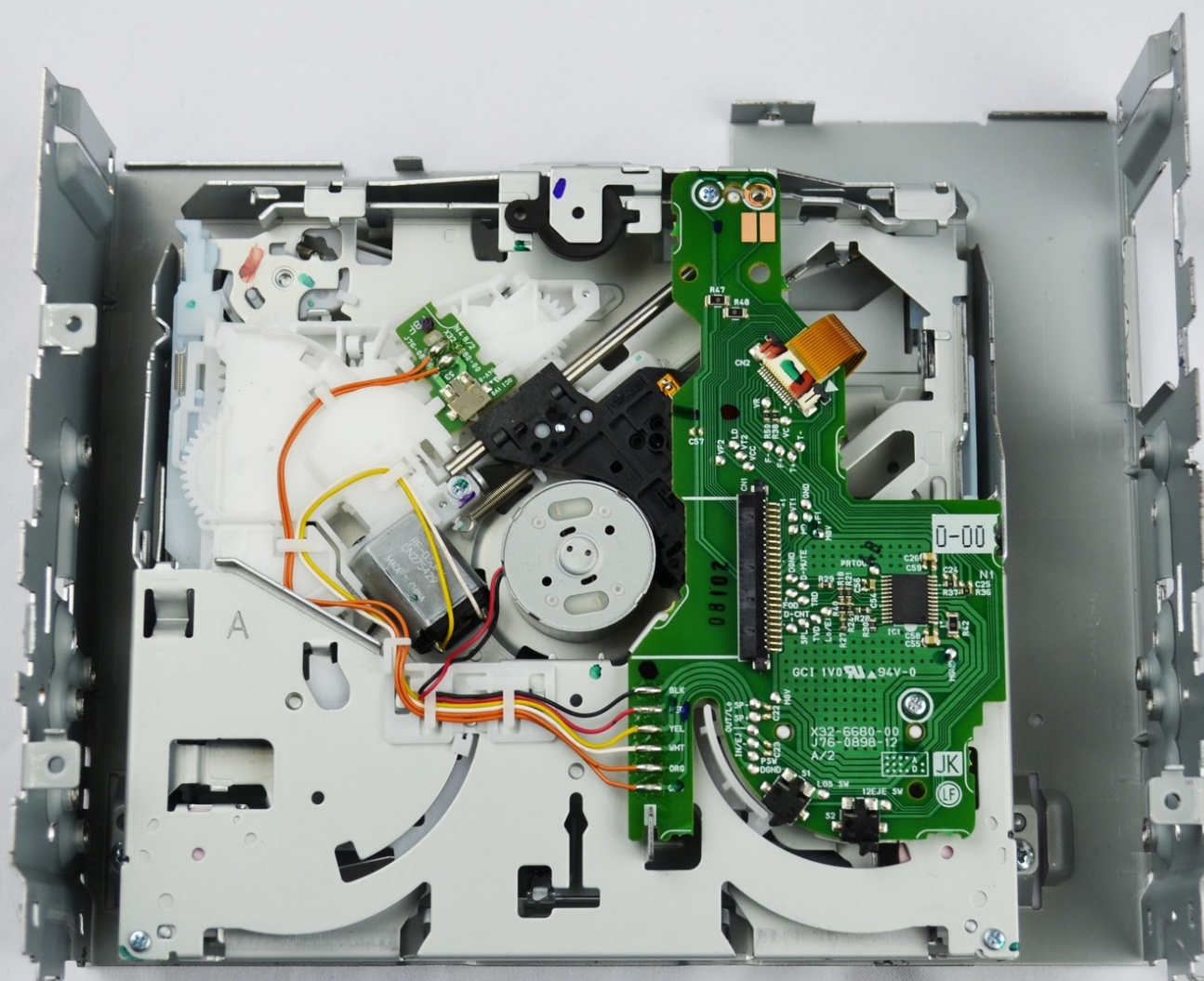




Kenwood KDC-BT362U DVD-Drive Replacement

This guide will demonstrate how to remove the DVD-Drive and replace it.

Written By: Steven Chov





TOOLS:

- [Phillips #0 Screwdriver](#) (1)
 - [iFixit Opening Tools](#) (1)
-

Step 1 — Front Panel



- Locate the face-plate eject button.

Step 2



- Press the eject button with your forefinger.
- Remove the face-plate.

Step 3



- Starting on the top side, pop the front panel frame out.
- Remove the face-plate frame.

Step 4



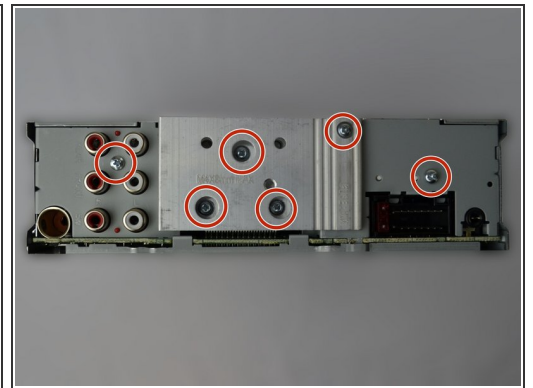
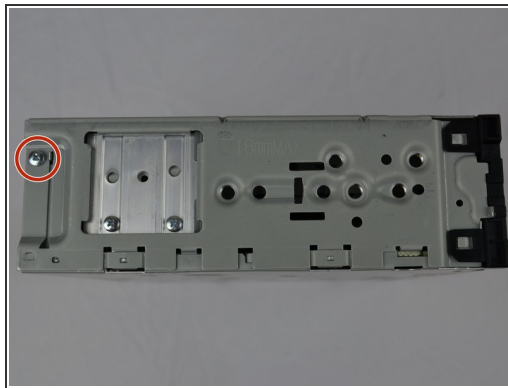
- Use the plastic opening tool to pry open the tabs.
- Repeat on the opposite side.

Step 5



- Remove the front panel.

Step 6 — Metal Case



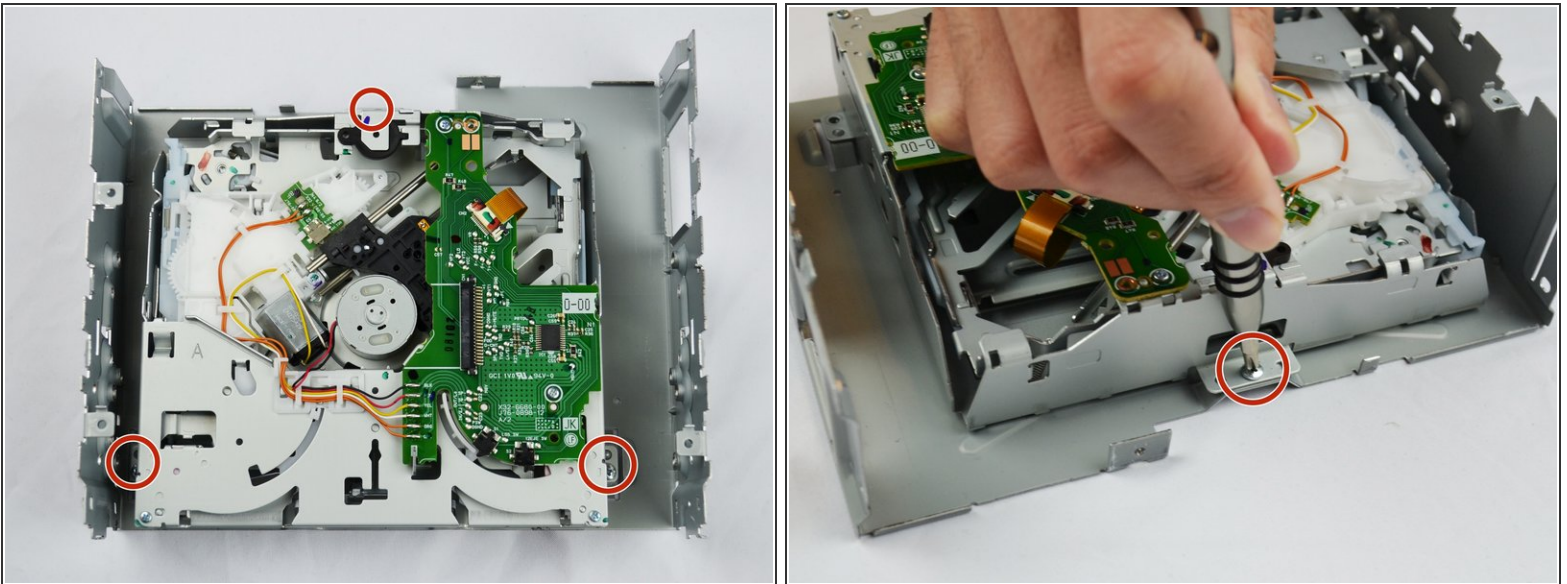
- Use the Phillips #0 Screwdriver to remove the screws off of the metal case.

Step 7



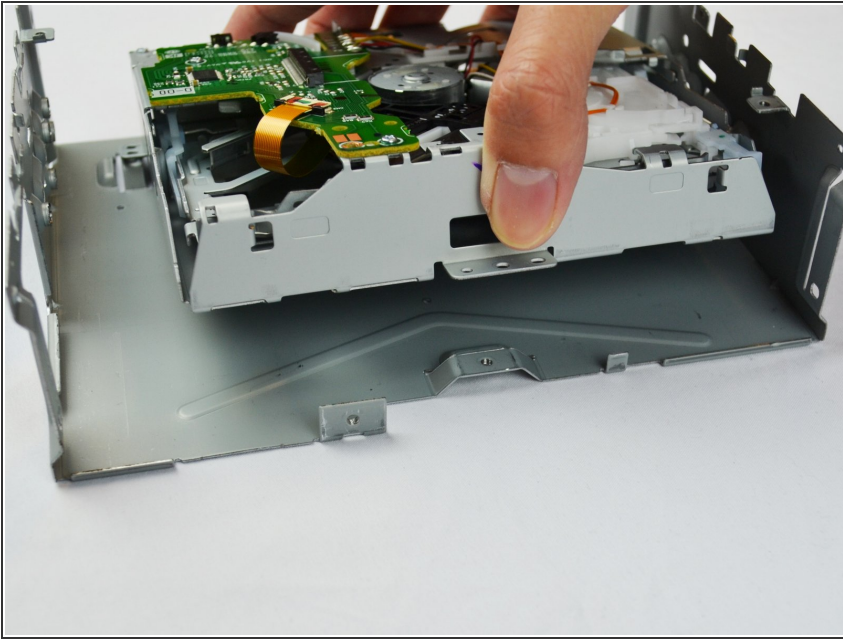
- Carefully separate the top and bottom halves of the metal case apart.
- ⓘ Do not separate the metal case halves completely.
- Carefully pull the DVD-Drive ribbon cable from the motherboard.

Step 8 — DVD-Drive



- Use the Phillips #0 Screwdriver to remove the three screws.

Step 9



- Lift the DVD-Drive to separate it from the metal case.

To reassemble your device, follow these instructions in reverse order.