



Kenwood KDC-BT362U LCD Screen Replacement

This guide will demonstrate how to reach and replace the LCD Screen.

Written By: Steven Chov





TOOLS:

- [iFixit Opening Tools](#) (1)
- [Phillips #0 Screwdriver](#) (1)
- [Metal Spudger](#) (1)

Step 1 — Front Panel



- Locate the face-plate eject button.

Step 2



- Press the eject button with your forefinger.
- Remove the face-plate.

Step 3



- Starting on the top side, pop the front panel frame out.
- Remove the face-plate frame.

Step 4



- Use the plastic opening tool to pry open the tabs.
- Repeat on the opposite side.

Step 5



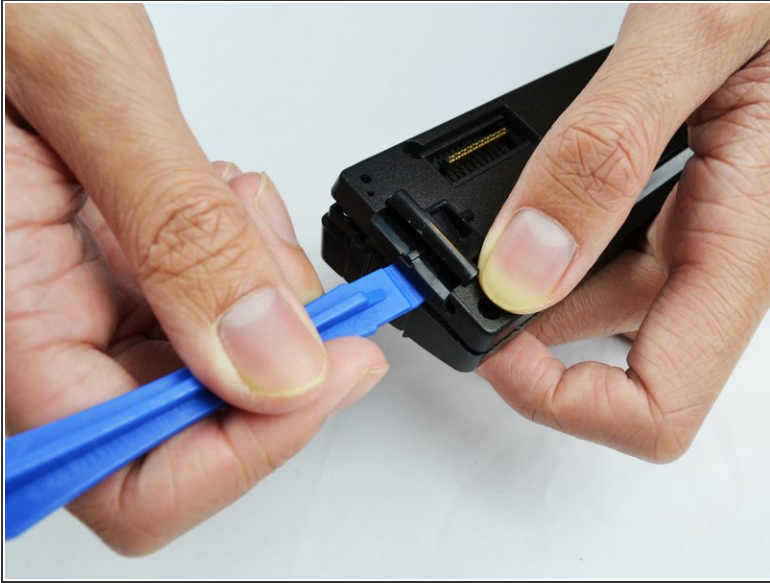
- Remove the front panel.

Step 6 — LCD Screen



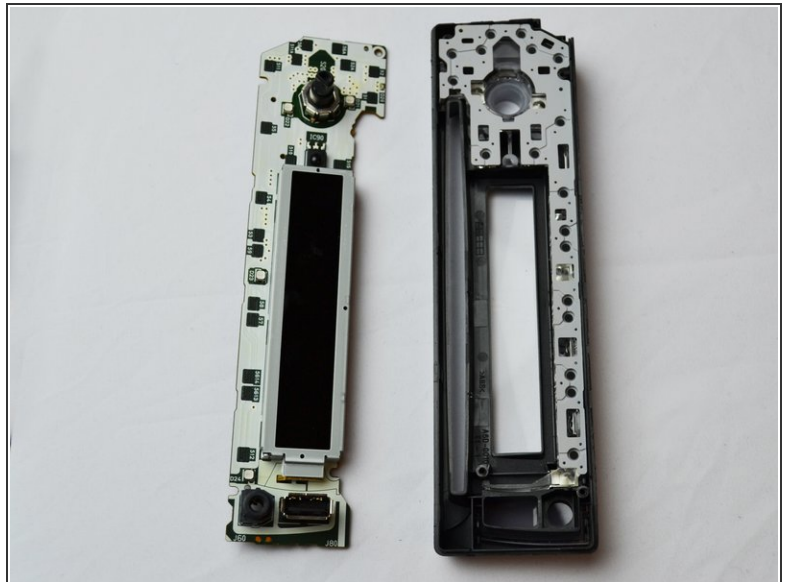
- Use the Phillips #0 Screwdriver to remove the four screws.

Step 7



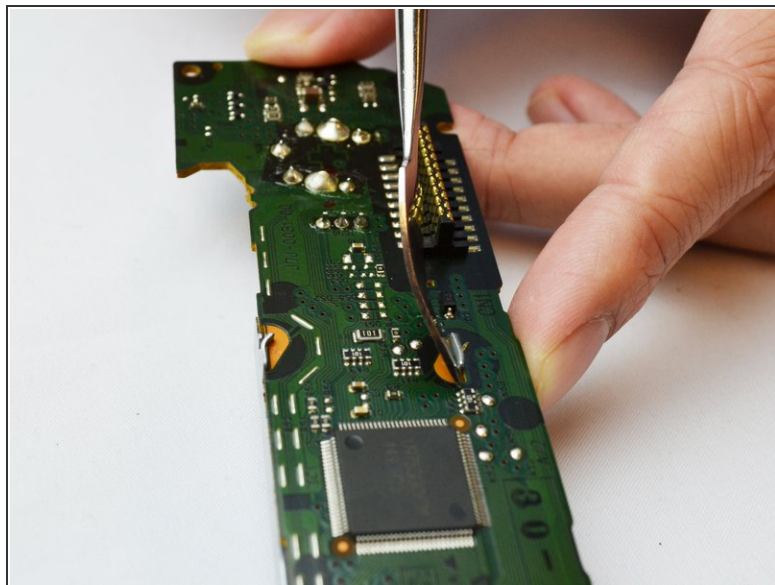
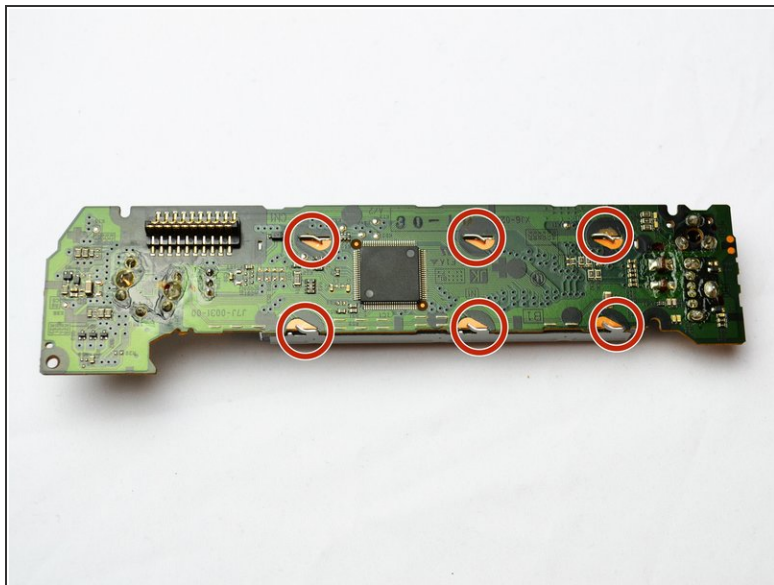
- Use the plastic opening tool to pry it open.

Step 8



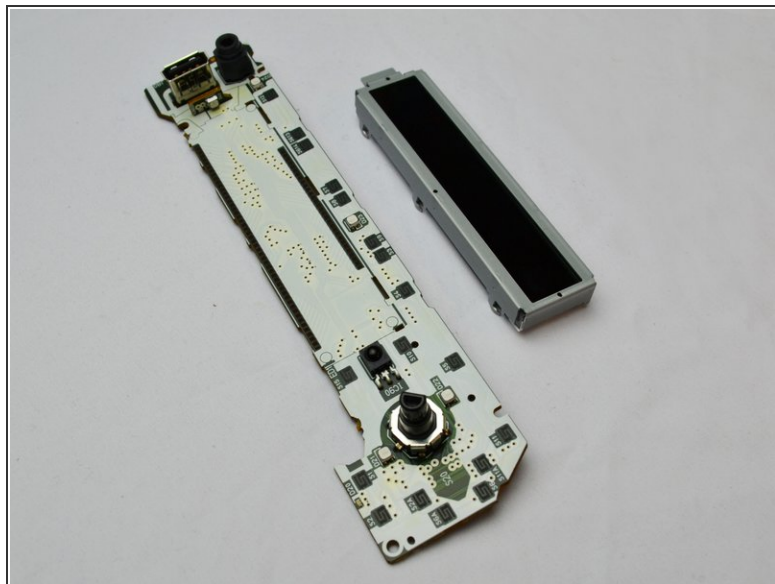
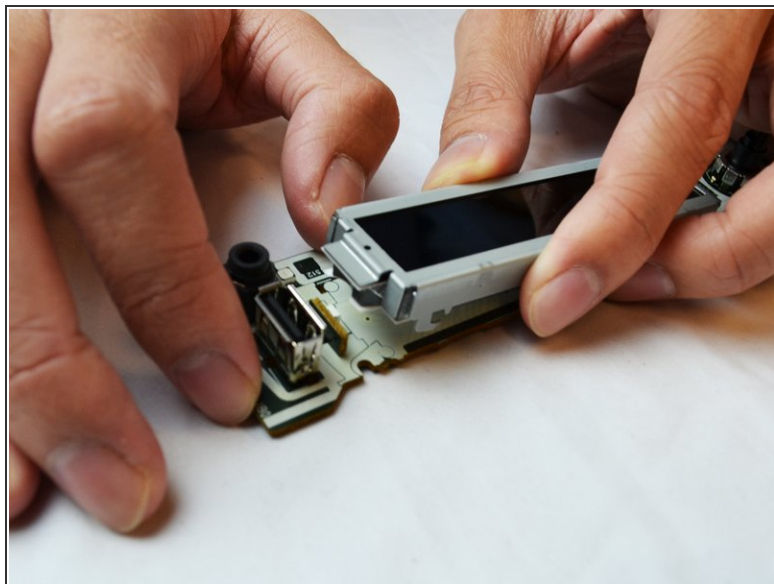
- Lift and remove the motherboard to reveal the inside of the front panel.

Step 9



- Use the metal spudger to straighten out the six pegs to allow the removal of the LCD Screen.

Step 10



- Lift the LCD Screen to remove and replace it.

To reassemble your device, follow these instructions in reverse order.