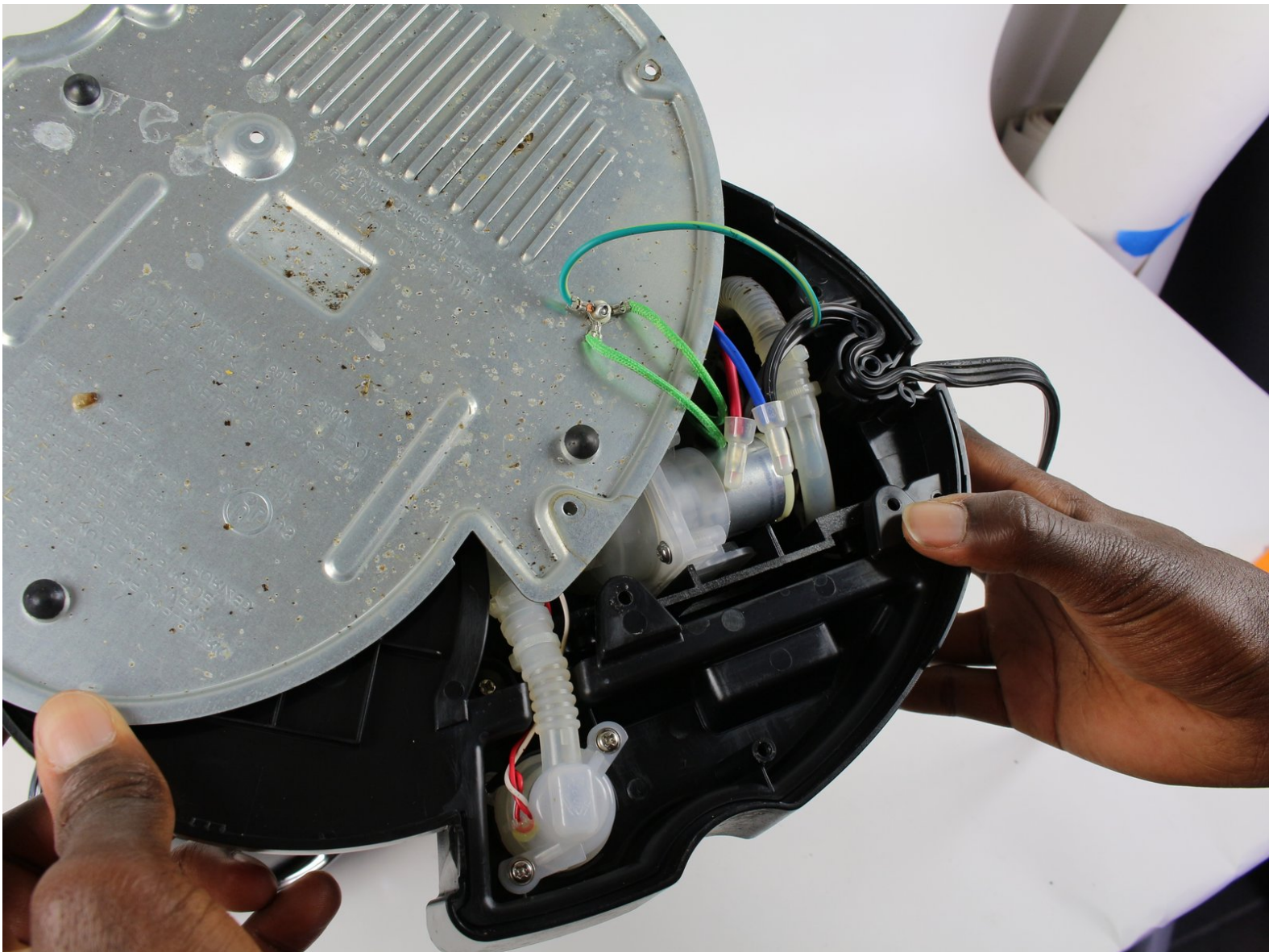




Keurig B60 Power Cord Replacement

This guide demonstrates how to replace a faulty power cord.

Written By: Jake Wynn



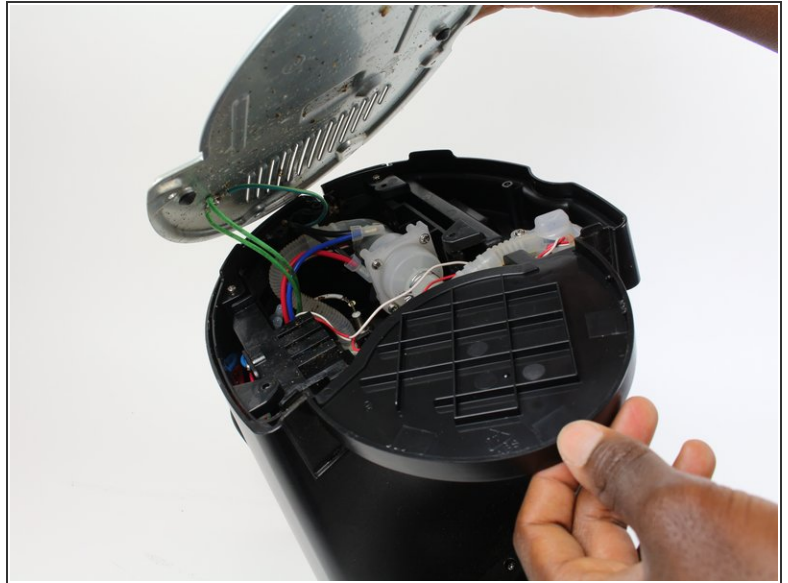
INTRODUCTION

This replacement involves removal of the bottom panel. Certain tools are required.

TOOLS:

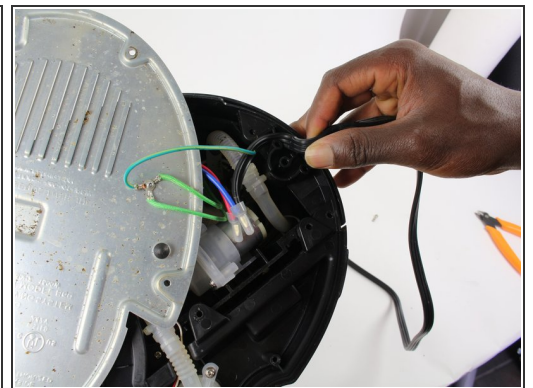
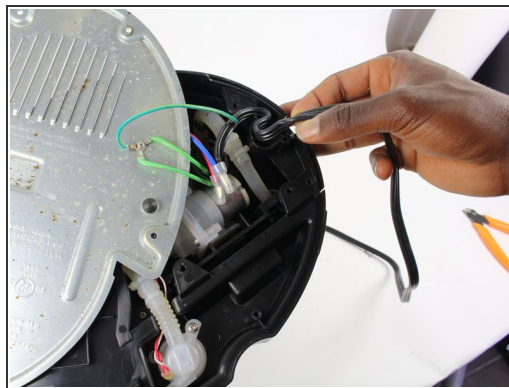
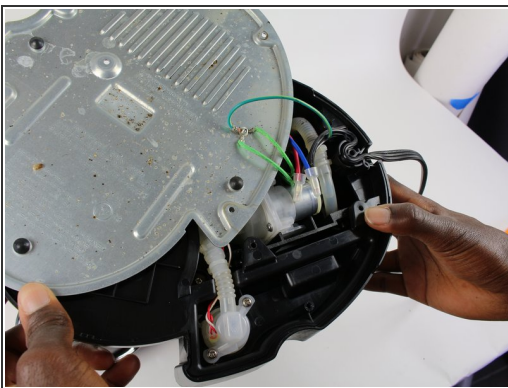
- [Phillips #1 Screwdriver](#) (1)
 - [Flush Wire Cutters](#) (1)
 - [Portable Soldering Iron](#) (1)
-

Step 1 — Power Cord



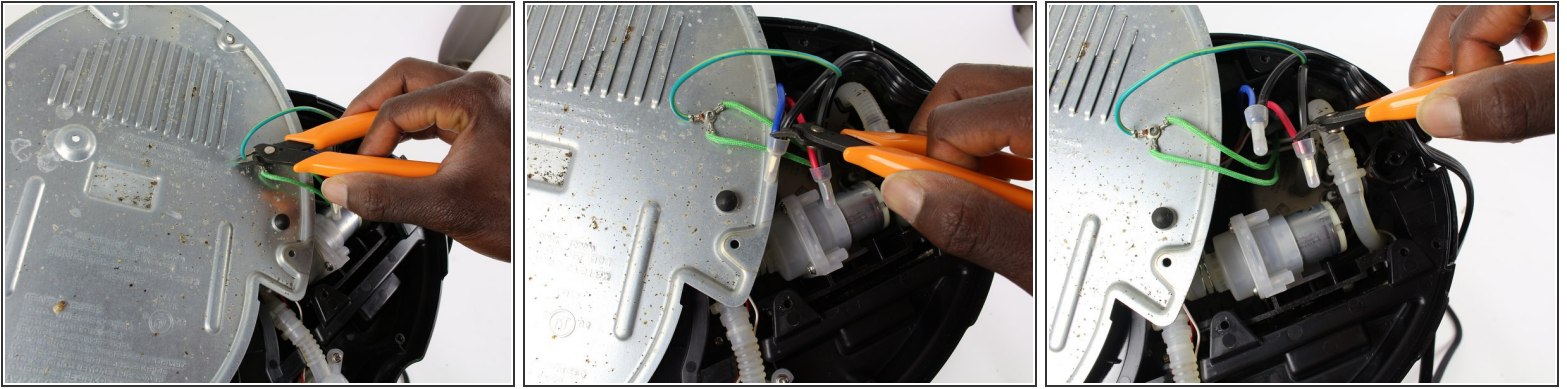
- Ensure Keurig is powered off and unplugged.
- Turn the Keurig over, and unscrew five 25.5 mm Phillip #1 screws, and remove bottom panel.

Step 2



- Unwind the Power Cord from the wire channel

Step 3



- Make three cuts along the wires shown
- Solder the Power Cord Replacement to the same wire attachments

To reassemble your device, follow these instructions in reverse order.