



# Keurig B70 Platinum Base Replacement

Replacing the base that is used to hold the cup on the Keurig B70 Platinum

Written By: Steven Tran



---

## INTRODUCTION

Cracked base? Or maybe you feel like taking it out for a thorough wash?

This guide will show you how to remove the plastic base surrounding the Keurig B70 Platinum device.

You will need a Phillips #2 screwdriver to complete this guide.



### TOOLS:

- [Phillips #2 Screwdriver](#) (1)
-

## Step 1 — Base





- Turn off and unplug the Keurig before starting.
- Turn the Keurig upside down so the metal base is exposed.
- Remove the five 12.0 mm screws.

## Step 2

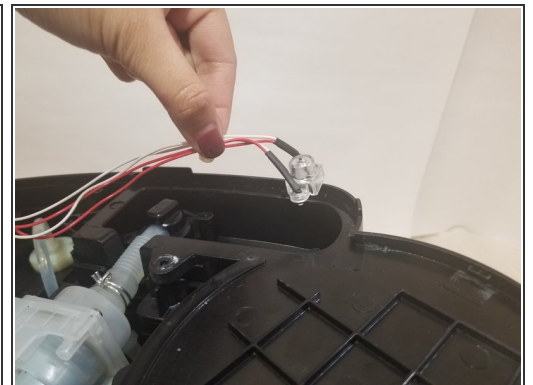
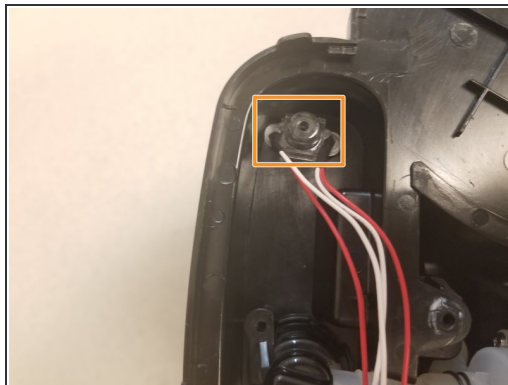
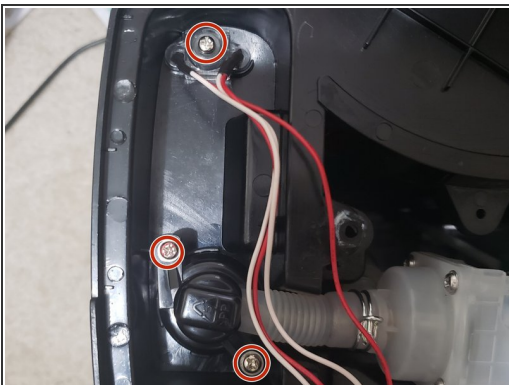


- Lift the metal plate off the Keurig and hang it over the side of the device.

 Be careful! The metal plate is sharp!

 There are wires connected to the metal plate. Make sure the wires are not in the way of the internal components.

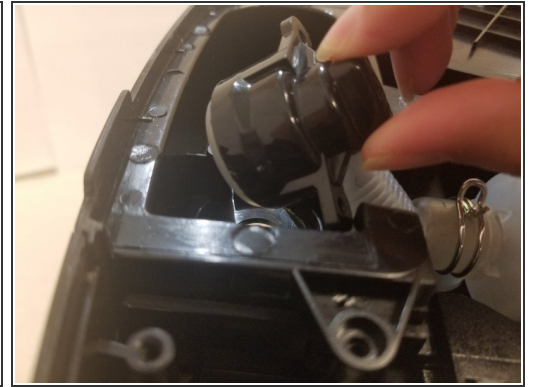
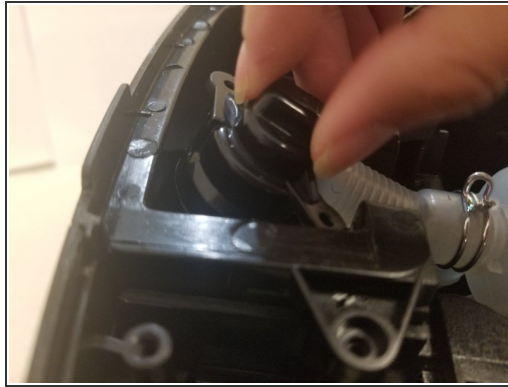
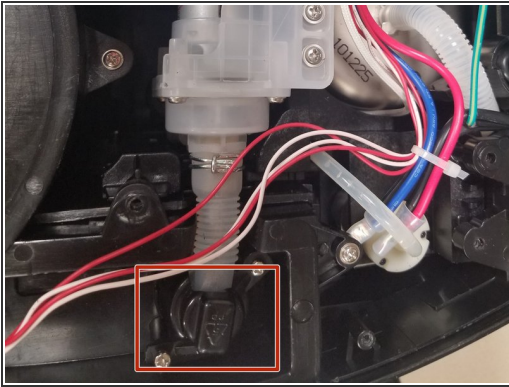
## Step 3



- Remove the three 11.0 mm screws located on the upper left side of the base from within the tub-looking area.
- Pull out the red and white wires and put it off to the side of the Keurig.

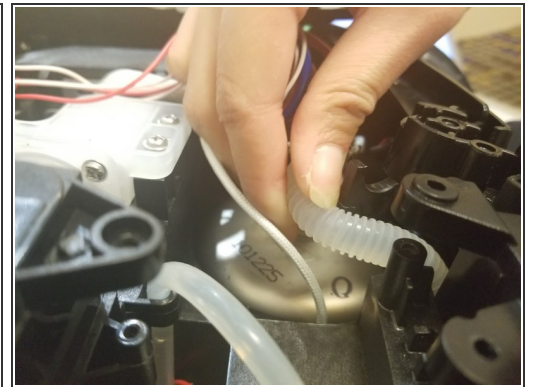
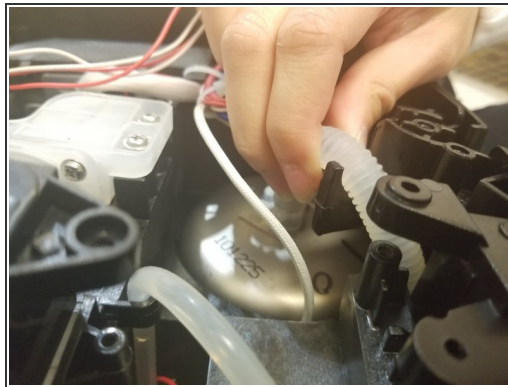
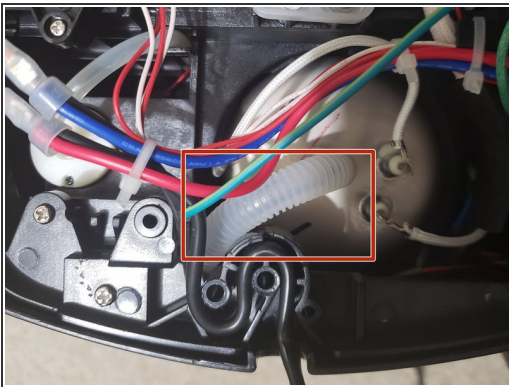


## Step 4



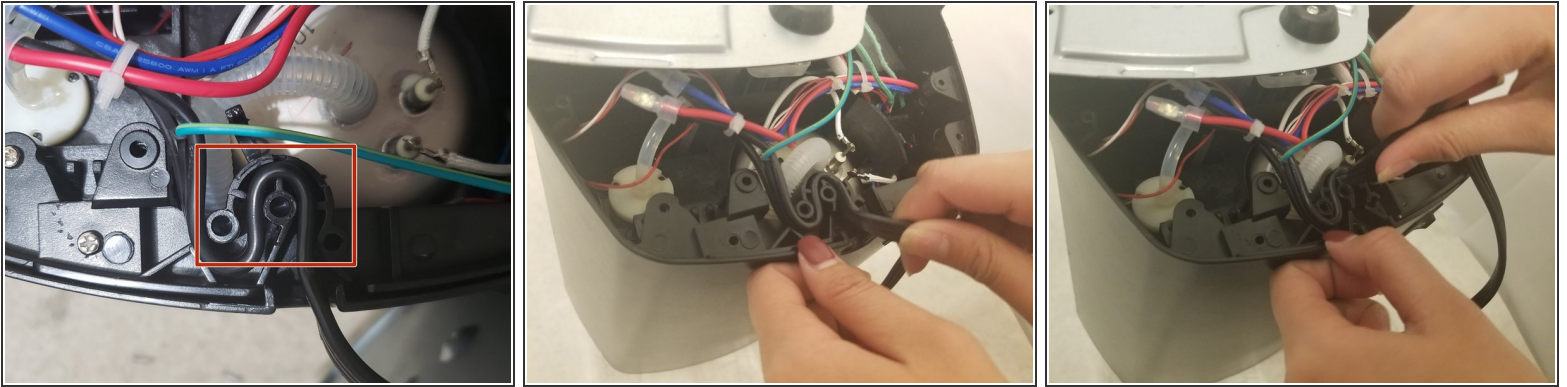
- Pull out the water collector by gripping it tightly and lifting upwards.

## Step 5




- Lift the tube, connected to the tank, off the black plastic hook and leave it off to the side of the hook.

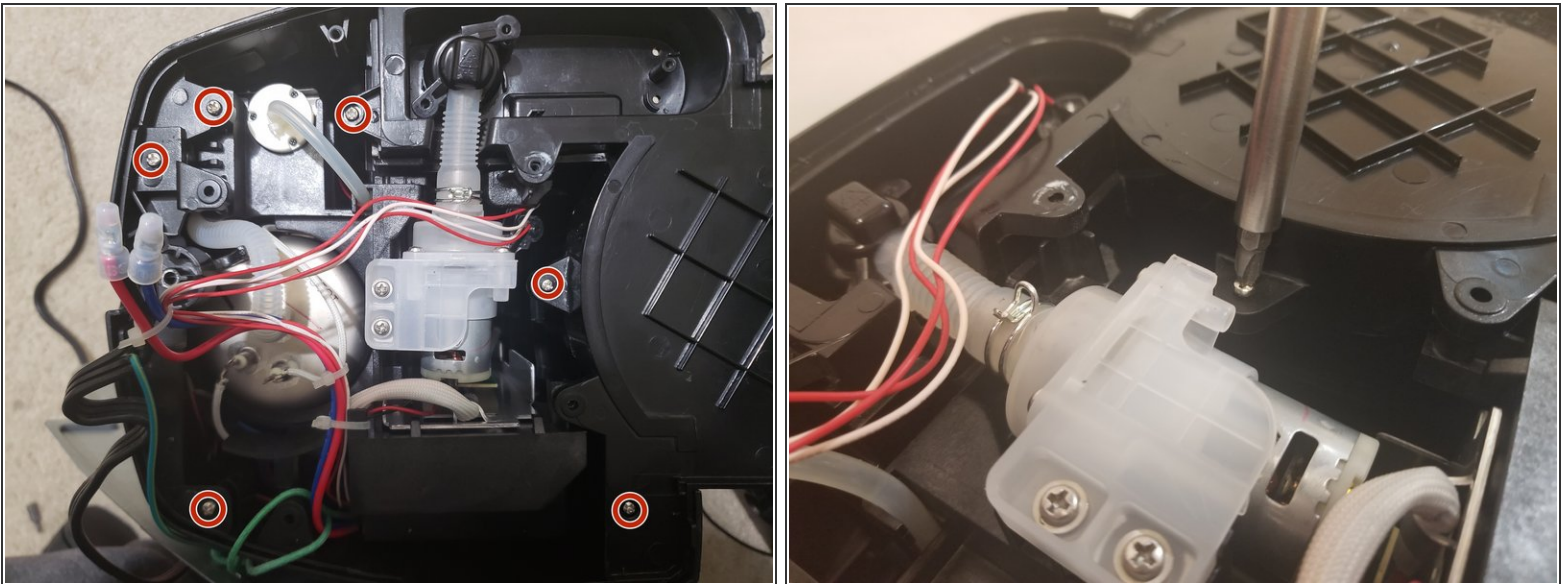
## Step 6



- Pull the power cord out from the plastic holder located near the water tank.

 This step requires a bit of force so don't be afraid to pull harder!

## Step 7



- Remove the six 13.0 mm screws.

## Step 8



- Lift the metal base and hover it over the opening of the black plastic base.
- Carefully raise the plastic base over the metal base until it is removed.
- ⓘ Make sure to pull the power cord through the base as well!

To reassemble your device, follow these instructions in reverse order.