



Keurig K10 MINI PLUS Cold Water Reserve Arm Replacement

This guide is to replace the cold water reserve arm in a Keurig K10 MINI PLUS.

Written By: Timmur



INTRODUCTION

Replacing the Cold Water Reserve Arm is a fairly simple task that does not require a large time investment. Even beginners should be able to complete this replacement without the need for outside help.



TOOLS:

- [Metal Spudger](#) (1)
 - [iFixit Opening Tools](#) (1)
 - [Phillips #1 Screwdriver](#) (1)
 - [Phillips #2 Screwdriver](#) (1)
-

Step 1 — Cold Water Reserve Lid



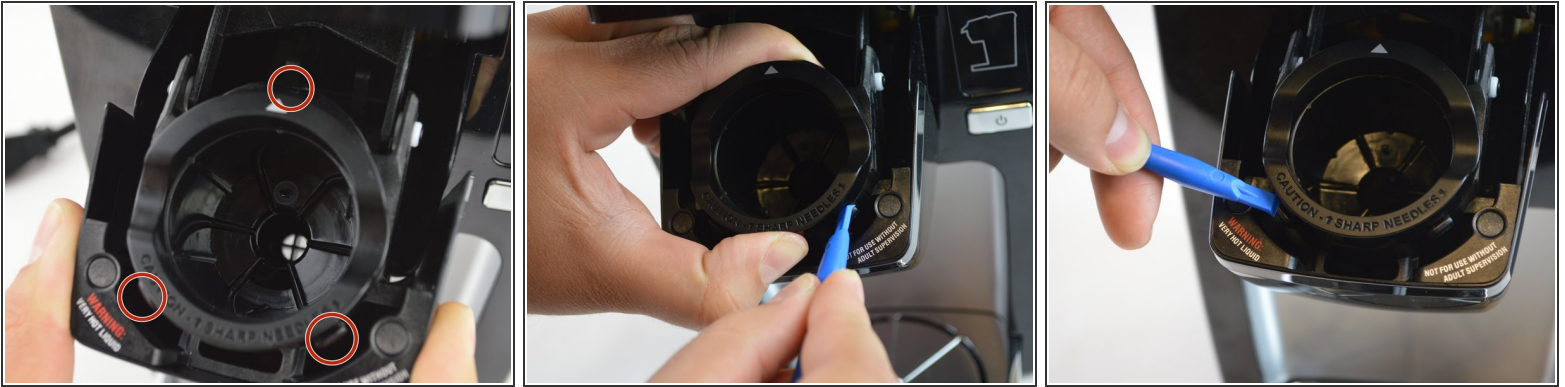
- Lift the cold water reserve lid up to reveal its hinge.
- Using either the metal spudger or the opening tool, gently pry the plastic out of the metal axle.

Step 2



- Repeat the last step on the other hinge, making sure to keep a firm grasp on the lid as it comes off to avoid dropping it.

Step 3 — Cup Holder



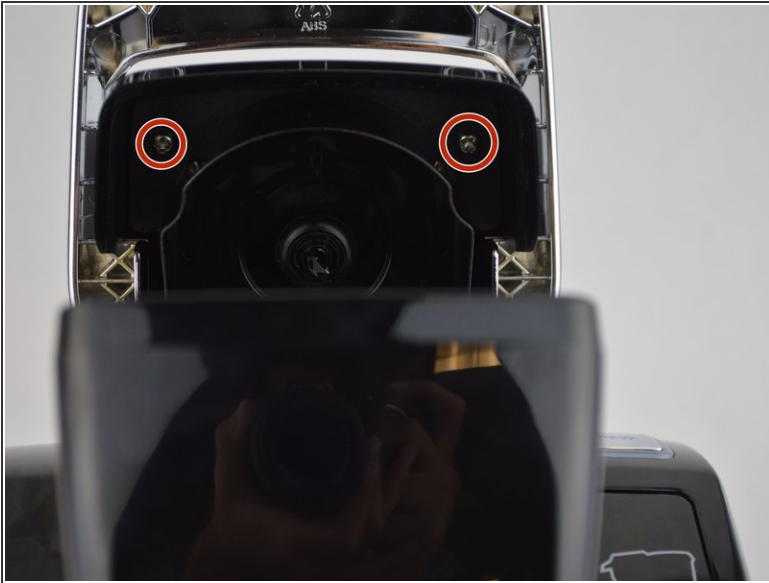
- Press on tab while pulling up on K-cup until you hear a click. Repeat for the remaining tabs. We found using the smallest of the "plastic opening tools" worked wonders.

Step 4



- Once all of the tabs have been pressed, the K-Cup should just pop out. After, you just pull the remainder of the K-Cup. You have successfully removed the K-Cup.

Step 5 — Top Needle

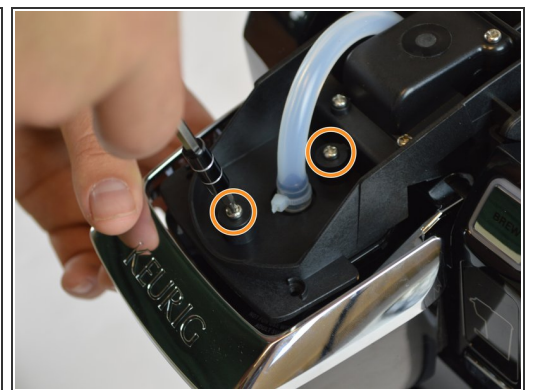
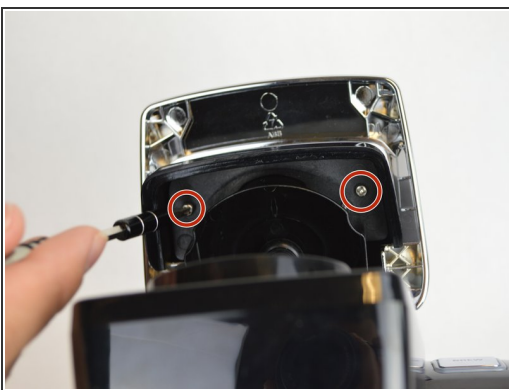


- Remove two 9 mm Phillips #1 screws.

⚠ Avoid the top needle if at all possible. The needle may cut you and/or penetrate your skin.

- The screws are located on the top of where the K-Cup would be.

Step 6



- Once you remove the screws, the top cover should come out.

- You will then want to remove these screws which are the same size.

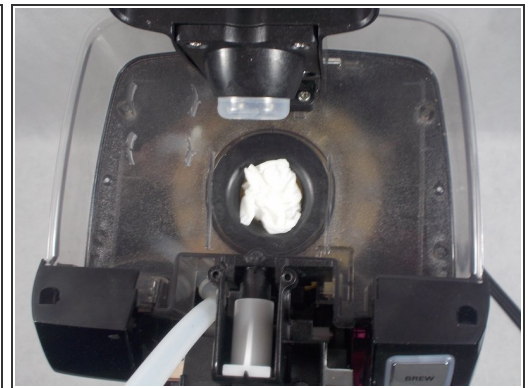
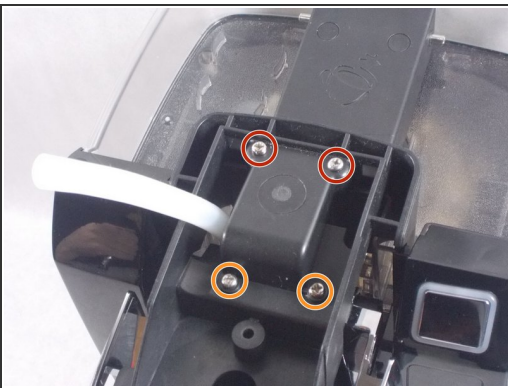
⚠ The needle is sharp, so be careful.

Step 7



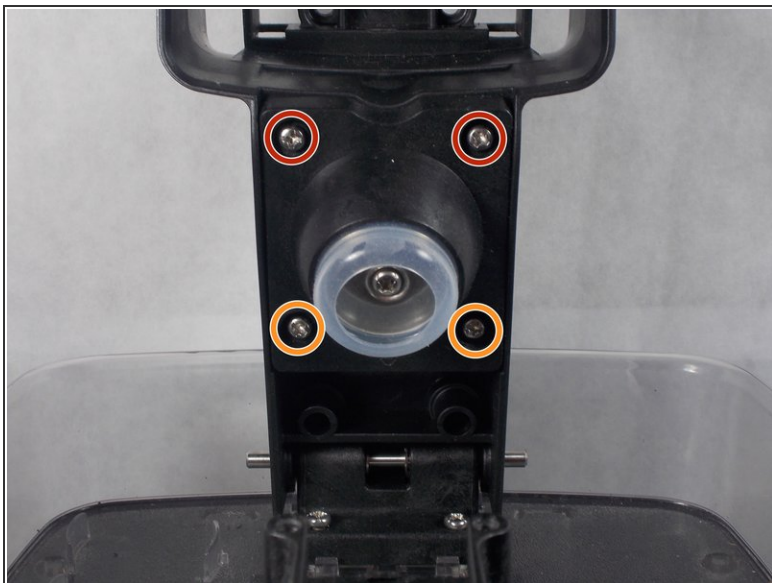
- Once you get those removed, you are going to want to pull on the hose until it pops off.
- Once the hose comes off, the needle will fall out by itself.
- ⚠ Be careful when picking up the needle as the needle is sharp.

Step 8 — Cold Water Reserve Arm



- Remove two 14 mm Phillips #2 screws.
 - Remove two 12 mm Phillips #2 screws.
 - Lift the arm off the assembly. This will reveal the tank hole as shown.
- ⚠ It is recommended that you clog the tank hole with a napkin or something similar in order to prevent small parts from falling into the heating element.

Step 9



- Remove two 9.7 mm Phillips #2 screws.
- Remove two 11.5 mm Phillips #2 screws.
- Remove the cold water reserve arm's plug from the arm itself in order to allow access to the base screws.

Step 10



- Remove two 18 mm Phillips #2 screws.
- Finally, detach the arm from the cold water reserve basin.

To reassemble your device, follow these instructions in reverse order.