



Keurig K10 MINI PLUS Water Pump Replacement

This guide will show you how to open up the Keurig K10 MINI PLUS to replace the Water Pump.

Written By: Matt Bav



INTRODUCTION

The Water Pump within the Keurig K10 MINI Plus is a deeply embedded part. Due to the nature of it being attached both to an electrical source and a water source, it is not recommended to attempt this guide without previous familiarity with both.



TOOLS:

- [Metal Spudger](#) (1)
 - [iFixit Opening Tools](#) (1)
 - [Phillips #1 Screwdriver](#) (1)
 - [Phillips #2 Screwdriver](#) (1)
-

Step 1 — Cold Water Reserve Lid



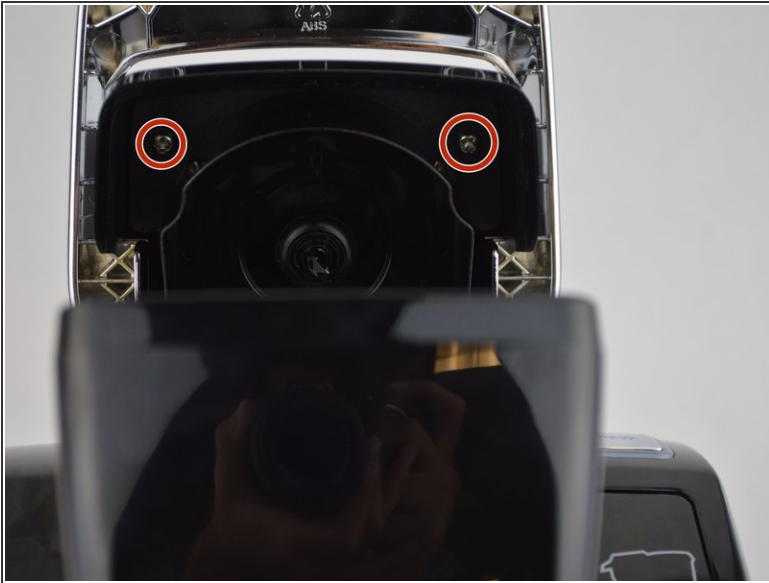
- Lift the cold water reserve lid up to reveal its hinge.
- Using either the metal spudger or the opening tool, gently pry the plastic out of the metal axle.

Step 2



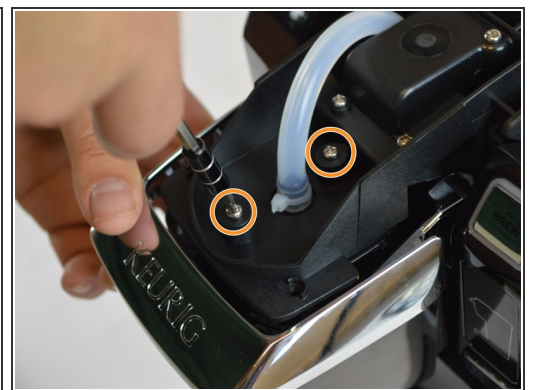
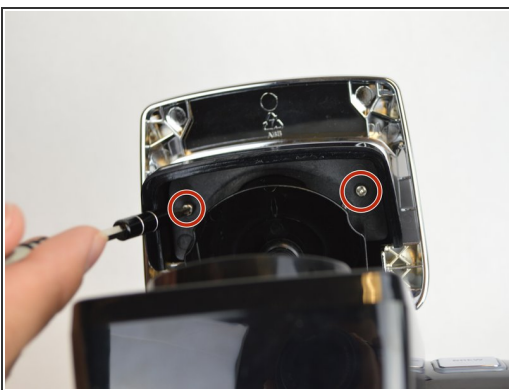
- Repeat the last step on the other hinge, making sure to keep a firm grasp on the lid as it comes off to avoid dropping it.

Step 3 — Top Needle



- Remove two 9 mm Phillips #1 screws.
- ⚠ Avoid the top needle if at all possible. The needle may cut you and/or penetrate your skin.
- The screws are located on the top of where the K-Cup would be.

Step 4



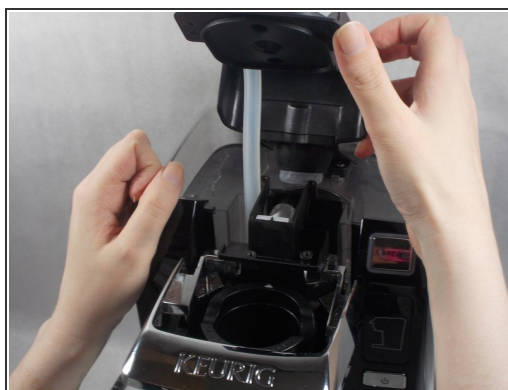
- Once you remove the screws, the top cover should come out.
- You will then want to remove these screws which are the same size.
- ⚠ The needle is sharp, so be careful.

Step 5



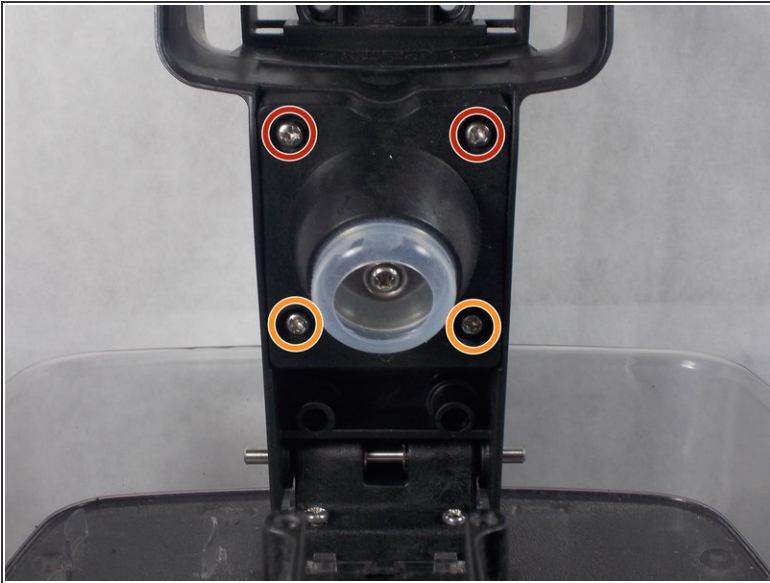
- Once you get those removed, you are going to want to pull on the hose until it pops off.
- Once the hose comes off, the needle will fall out by itself.
- ⚠ Be careful when picking up the needle as the needle is sharp.

Step 6 — Cold Water Reserve Arm



- Remove two 14 mm Phillips #2 screws.
 - Remove two 12 mm Phillips #2 screws.
 - Lift the arm off the assembly. This will reveal the tank hole as shown.
- ⚠ It is recommended that you clog the tank hole with a napkin or something similar in order to prevent small parts from falling into the heating element.

Step 7



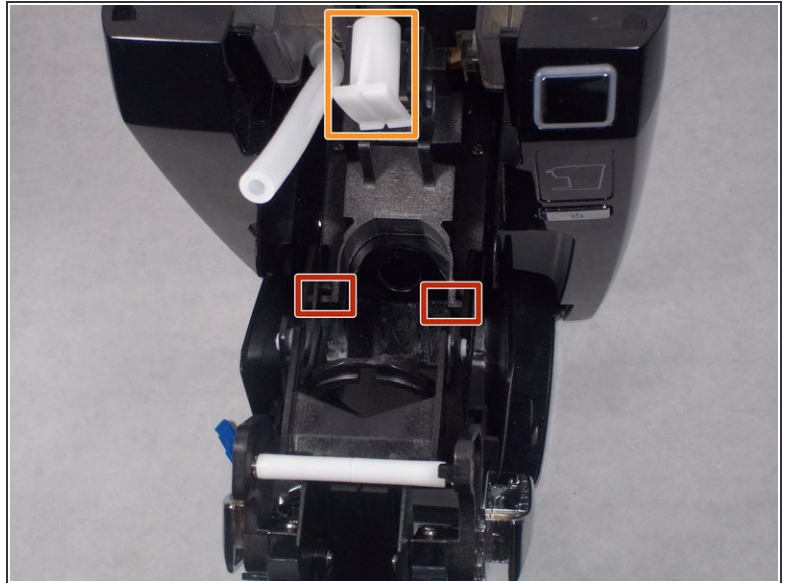
- Remove two 9.7 mm Phillips #2 screws.
- Remove two 11.5 mm Phillips #2 screws.
- Remove the cold water reserve arm's plug from the arm itself in order to allow access to the base screws.

Step 8



- Remove two 18 mm Phillips #2 screws.
- Finally, detach the arm from the cold water reserve basin.

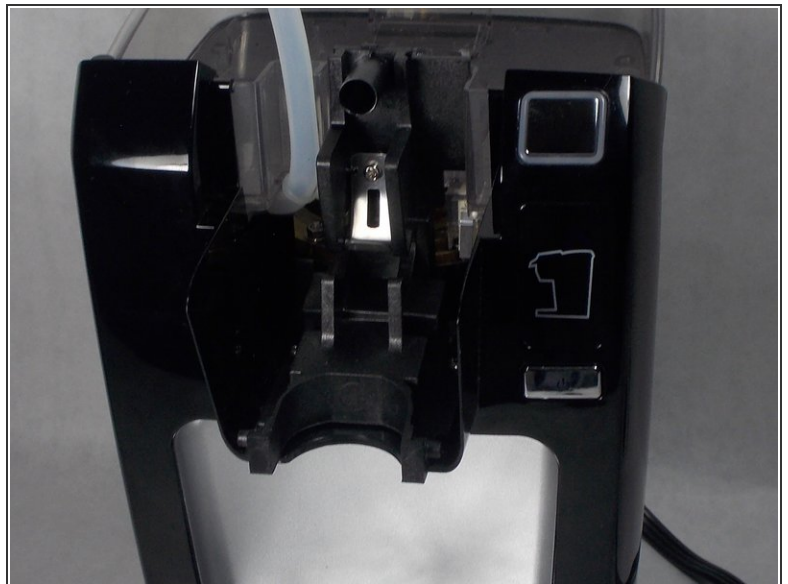
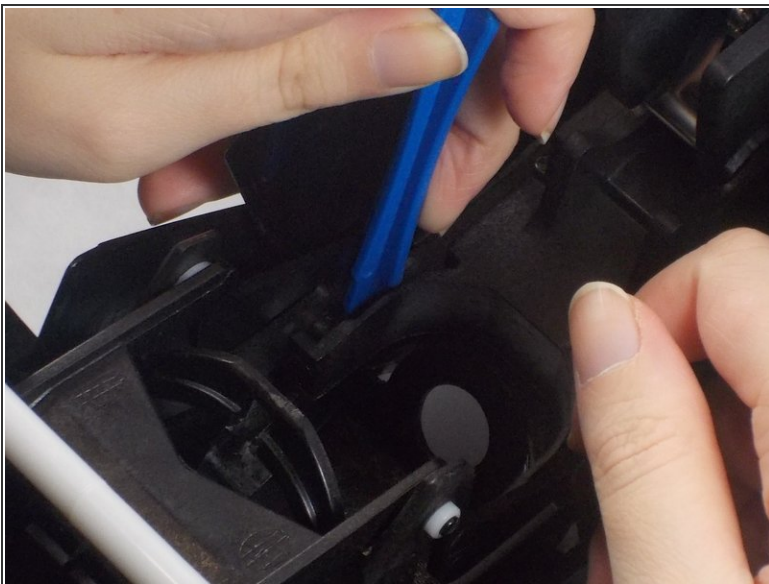
Step 9 — Dispenser Head



- Pull the head assembly forward to reveal the two plastic axle points that keep the head assembly attached to the base.

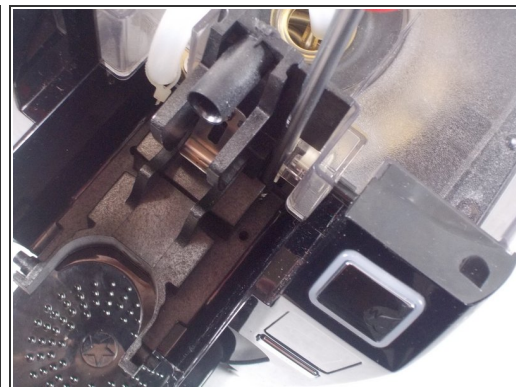
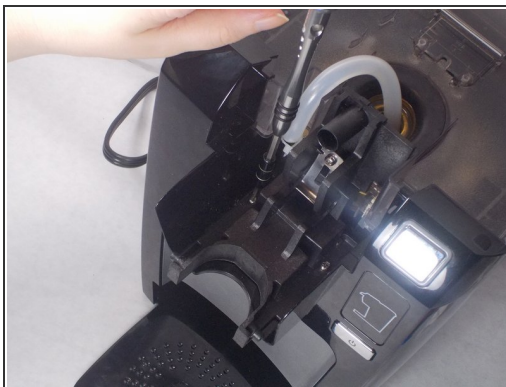
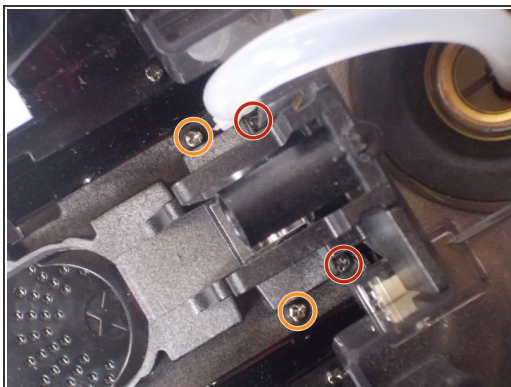
⚠ There is a spring concealed by a white piece as shown.

Step 10



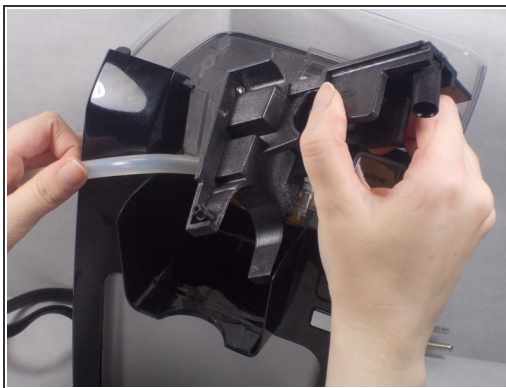
- Using the iFixit Opening Tool, gently pry apart the plastic head assembly piece from both the body's axles and its left to remove it.

Step 11 — Brew Button



- Remove two 14 mm Phillips #2 screws.
- Remove two 12 mm Phillips #2 screws.
- ⓘ Screws circled in red may be hard to reach and will require a screw driver with a neck width of 5mm or less.

Step 12



- Detach the seat by giving it a firm tug up.

Step 13



- Flip over the device.
- Remove four 11.5 mm Phillips #2 screws.

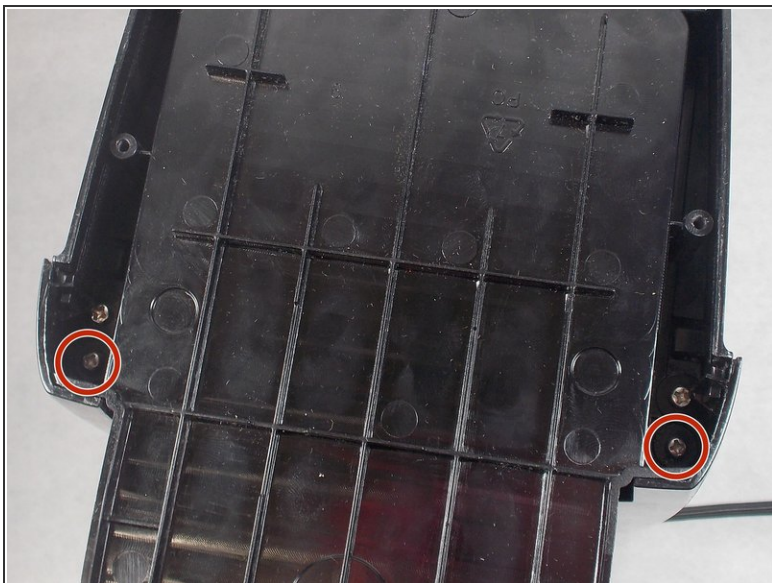
Step 14



- Reposition the metal lid while keeping the heat sink attached in order to reach the screws underneath.

⚠ It is recommended that you leave the heat sink aside as it contains thermal paste.

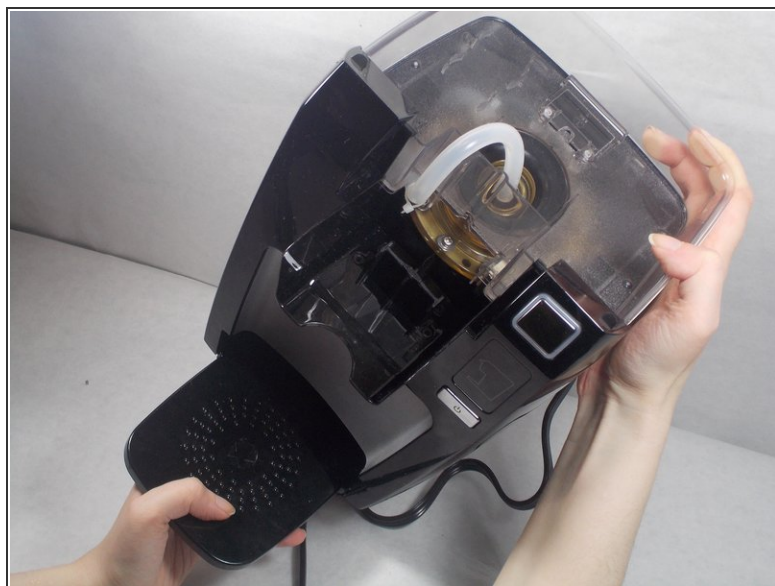
Step 15



- Remove two 11.5 mm Phillips #2 screws.

i Be careful not to confuse these two screws for the ones behind them.

Step 16



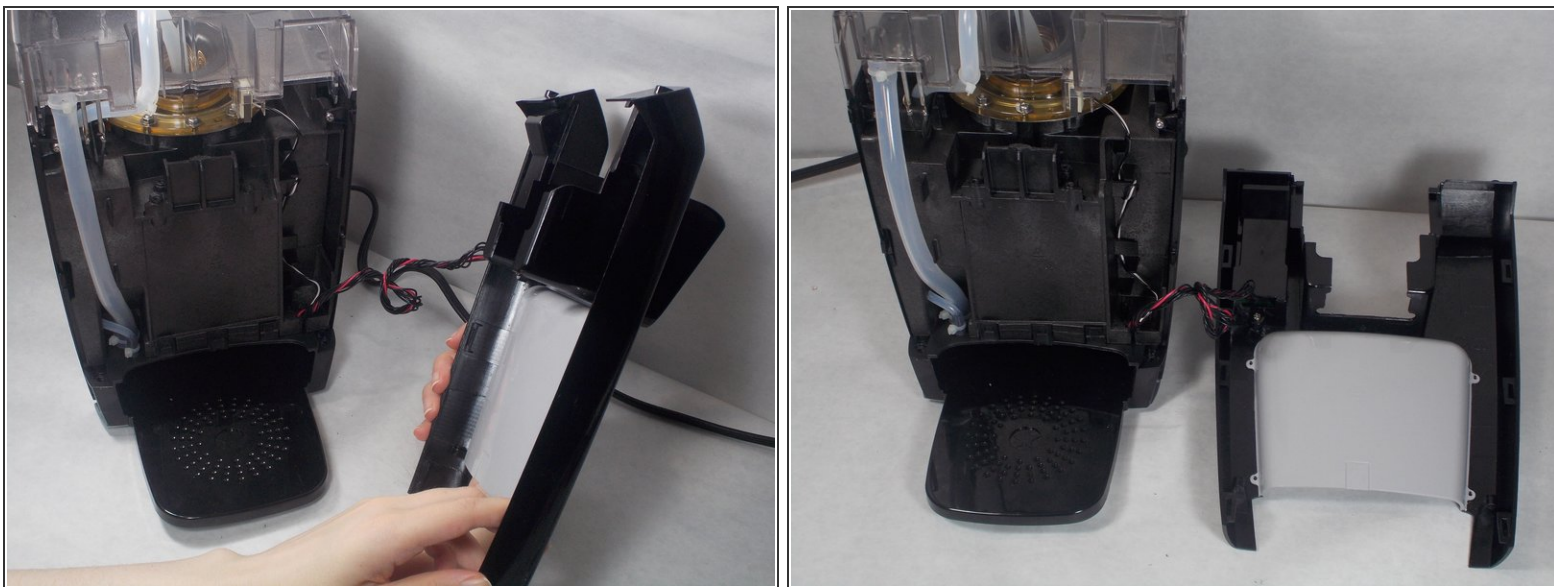
- Turn the device right side up again.

Step 17



- Begin to pry open the front plate using the iFixit Opening Tool as shown.
- Pry upwards in order to take the cover off.

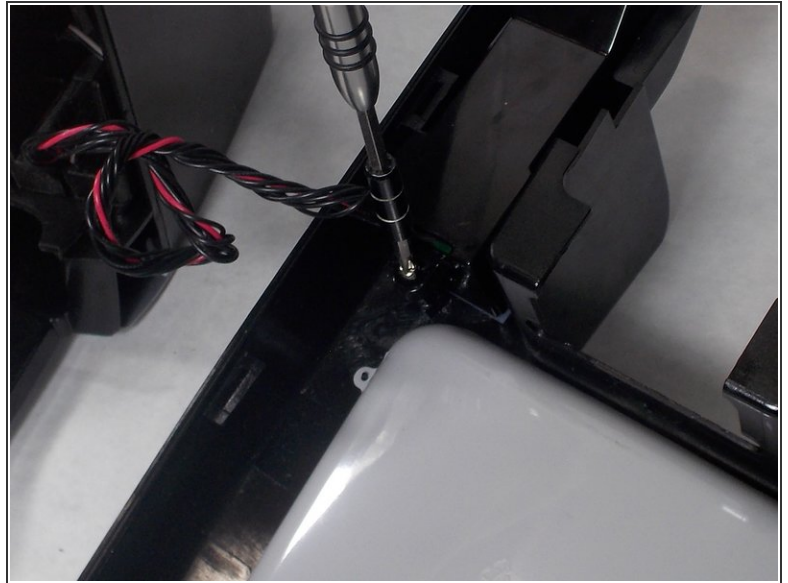
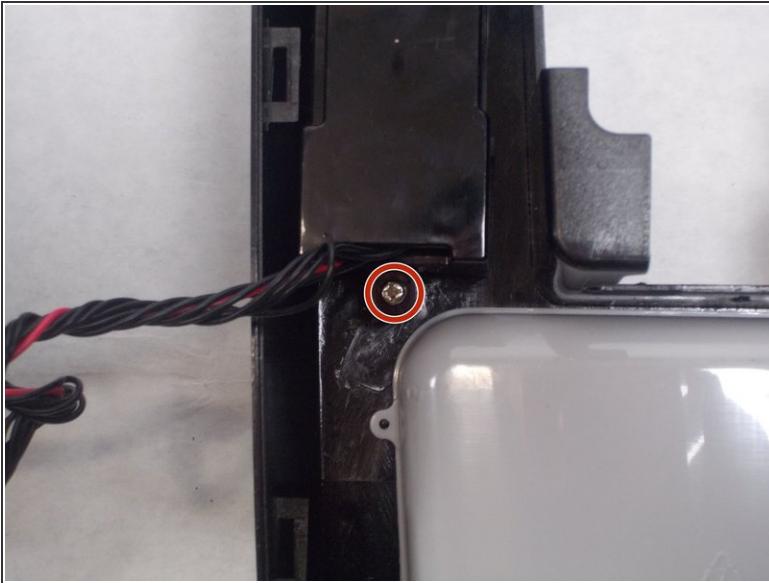
Step 18



- Remove the front plate.

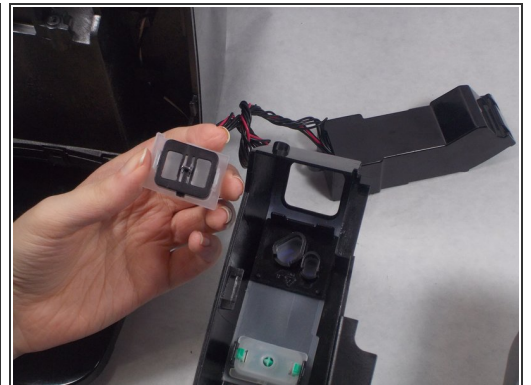
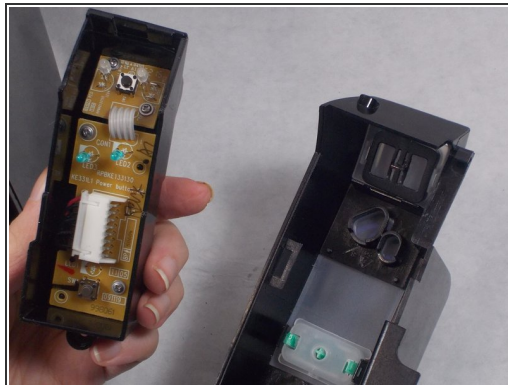
⚠ Be careful of the wires here.

Step 19



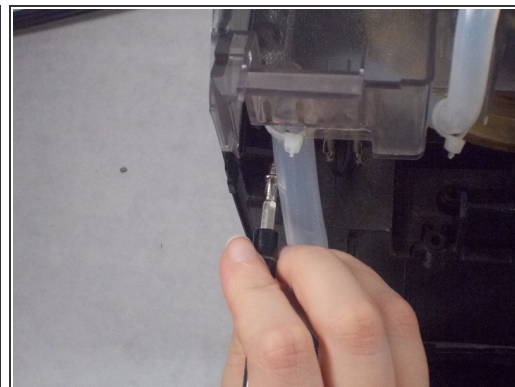
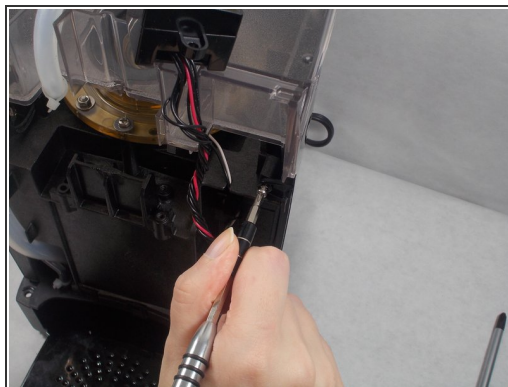
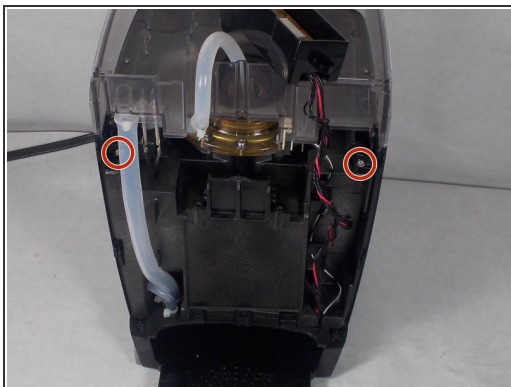
- Remove one 9.7 mm Phillips #2 screws.

Step 20



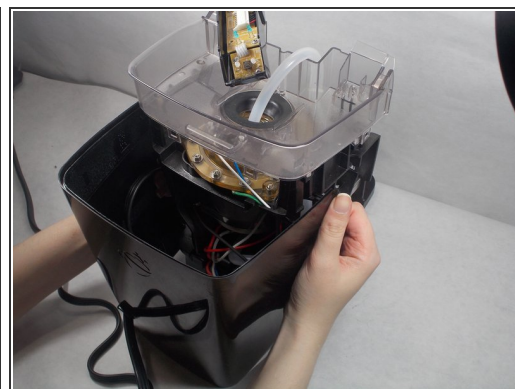
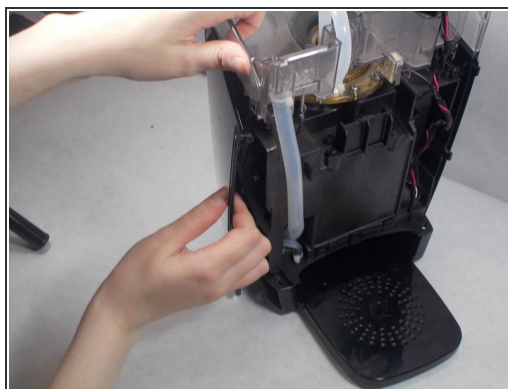
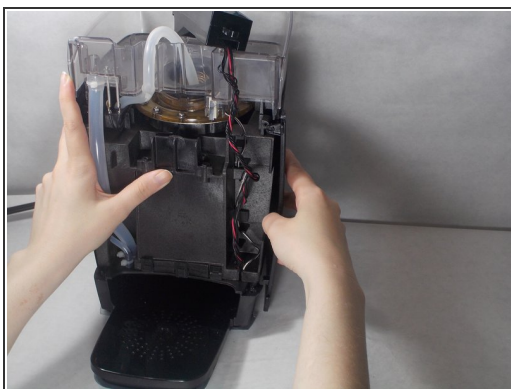
- Remove the button housing to access the buttons.
- The brew buttons can be easily popped out of place by pushing inwards from the front of the unit.

Step 21 — Water Pump



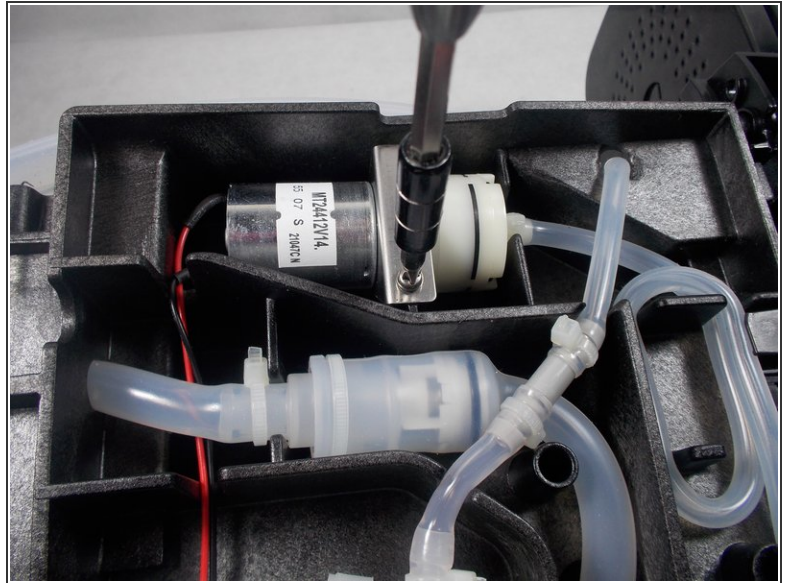
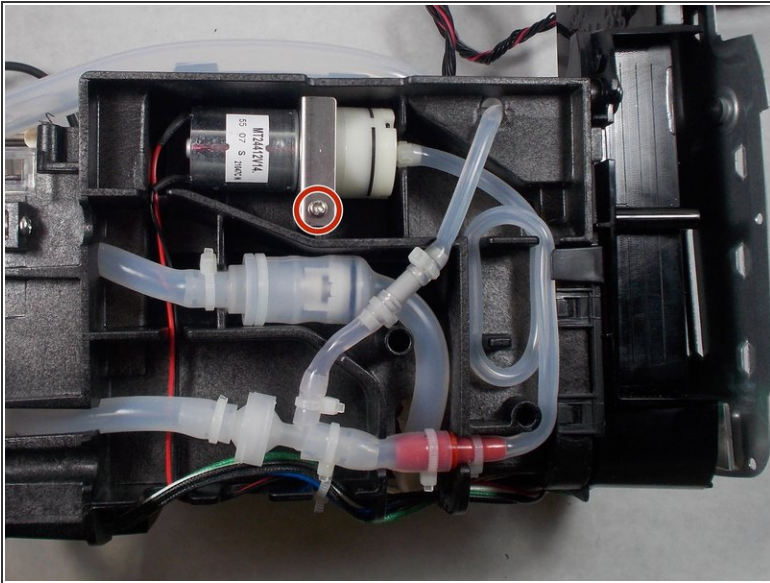
- Remove two 9.7 mm Phillips #2 screws.

Step 22



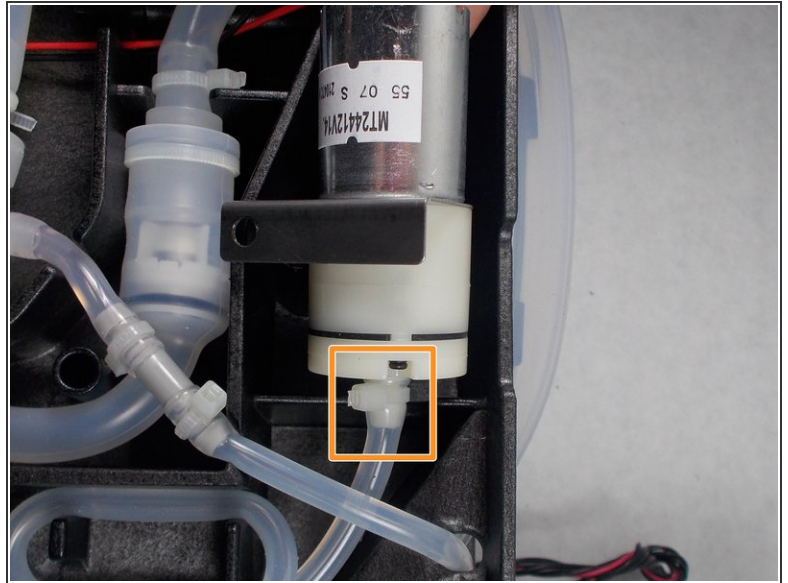
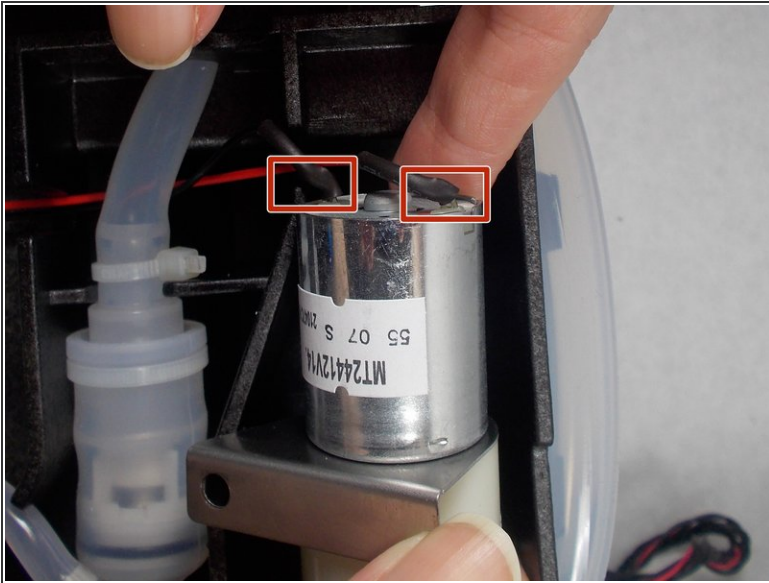
- Pry open the left, right, and back of the back plate by pulling out and up.
- ⓘ Do not be afraid to be fairly forceful when removing the back plate—it is snapped together fairly tight.

Step 23



- Rotate the device to reveal the pump side.
- Remove one 9.7 mm Phillips #2 screw.

Step 24



- Remove the power connectors attached to the water pump.
- Remove the water hose attached to the water pump.
- Remove the water pump itself.

To reassemble your device, follow these instructions in reverse order.