



Keurig K40 Open/Close Sensor Replacement

This guide will replace the open/closed sensor.

Written By: jonathan



INTRODUCTION

In this guide the user will open the top unit of the Keurig and replace the sensor that tells the device if the head unit is open or closed.



TOOLS:

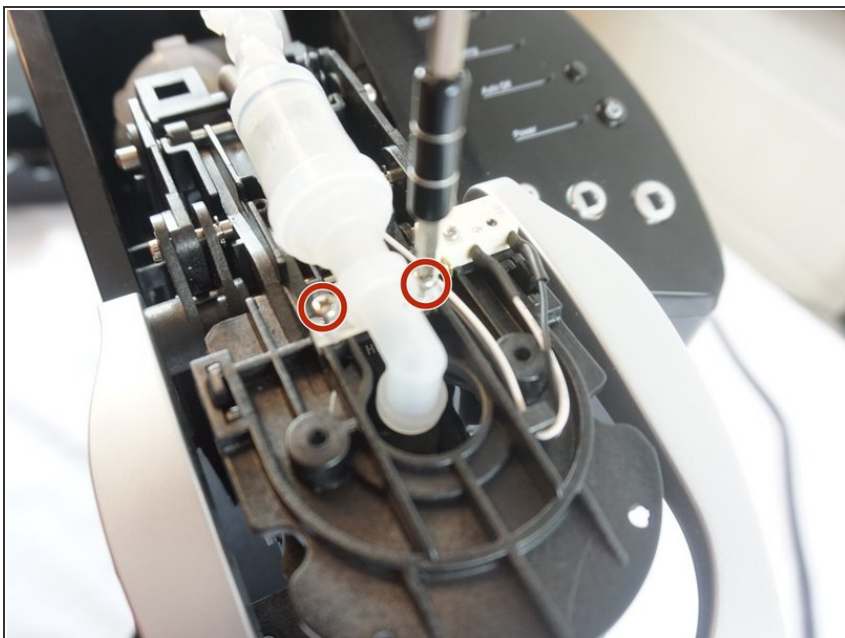
- [Phillips #0 Screwdriver](#) (1)
 - [Portable Soldering Iron](#) (1)
-

Step 1 — Top Water Pump



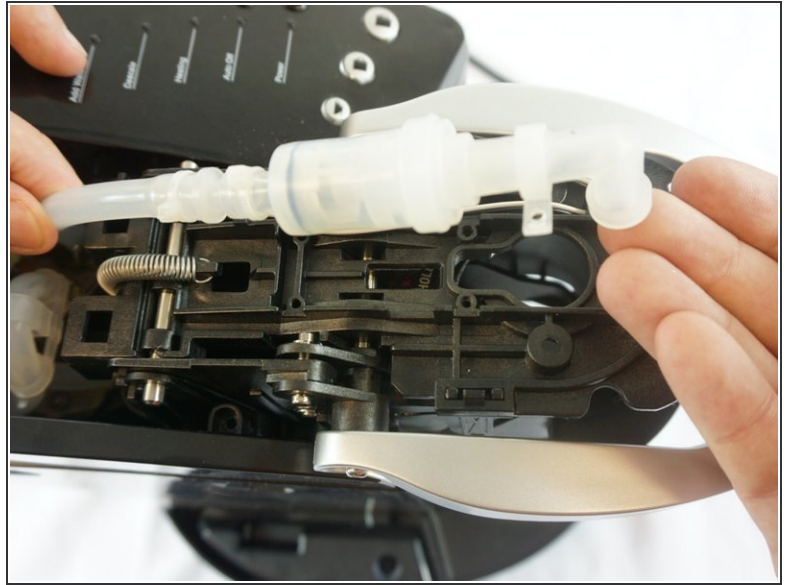
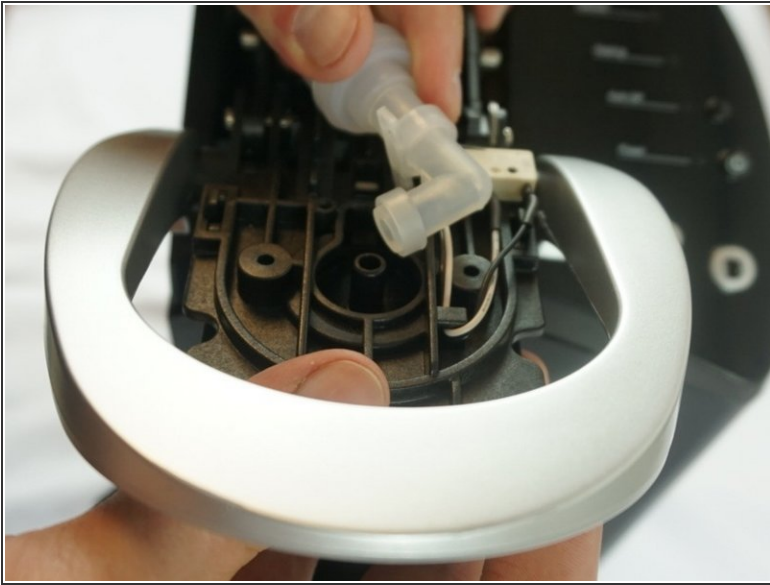
- Begin by removing the top cover from the device.
- ⓘ Remove the cover by gently rocking it back and forth with an emphasis on lowering the left side underneath an internal peg.

Step 2



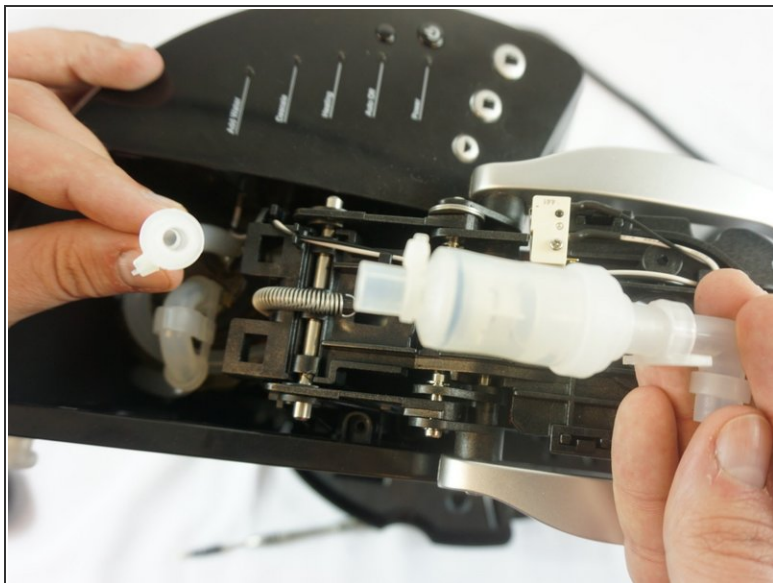
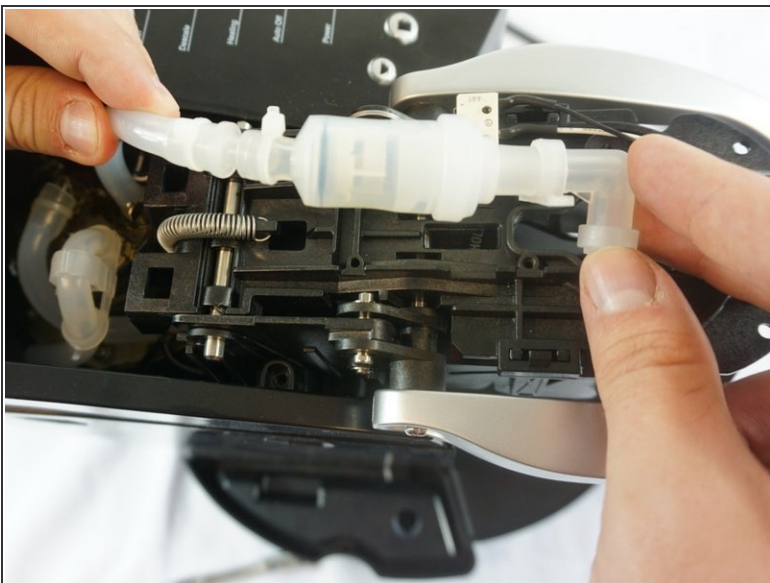
- Unscrew both 1.5mm screws located on the water pump.

Step 3



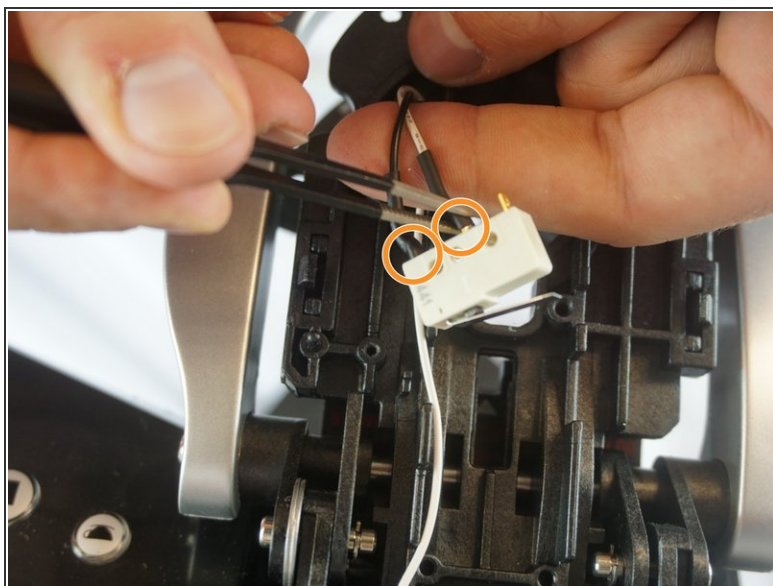
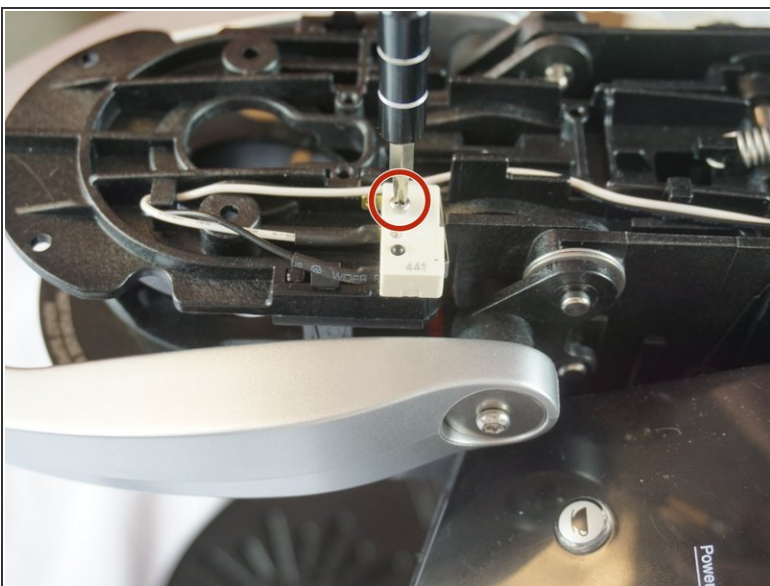
- Keeping one hand firmly placed on the device, tug upwards on the water pump until it is separated from the device.
- The water pump and pipe should now be loose and easy to move as shown.

Step 4



- Pull on the point where the pipe meets the water pump.
- The pipe will come loose and the water filter will be free and ready to be replaced.

Step 5 — Open/Closed Sensor



- Using a #2 Philips head screwdriver remove the 1.2mm screw holding the sensor in place.
- Locate where the connections are soldered to the sensor

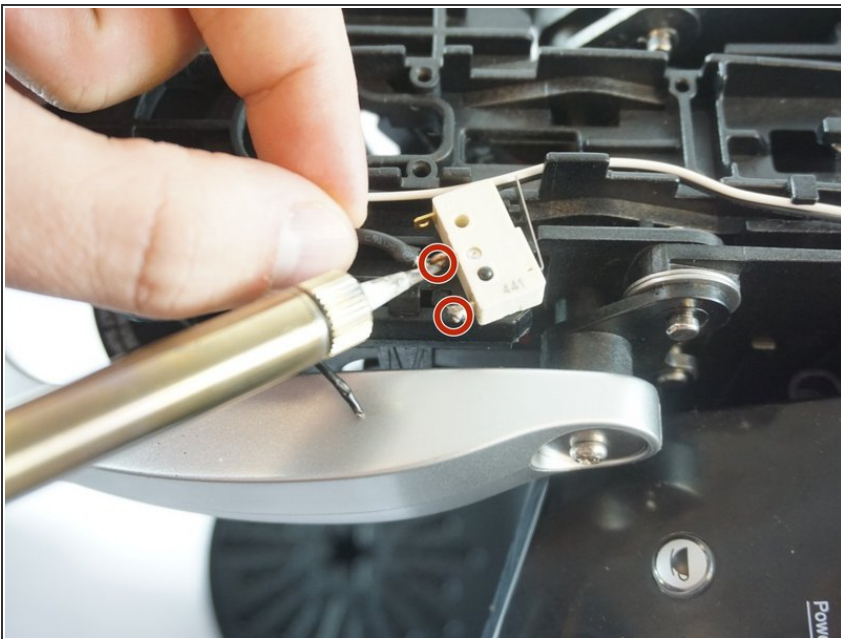
Step 6



- Melt the solder that is connected to the sensor.

⚠ Be careful to avoid any rubber and try to only contact the metal making the connection.

Step 7



- Put the replacement sensor back on the post that holds it and begin to solder the two metal connections back to the sensor.

⚠ Be careful not to touch the end of the soldering iron.

To reassemble your device, follow these instructions in reverse order.