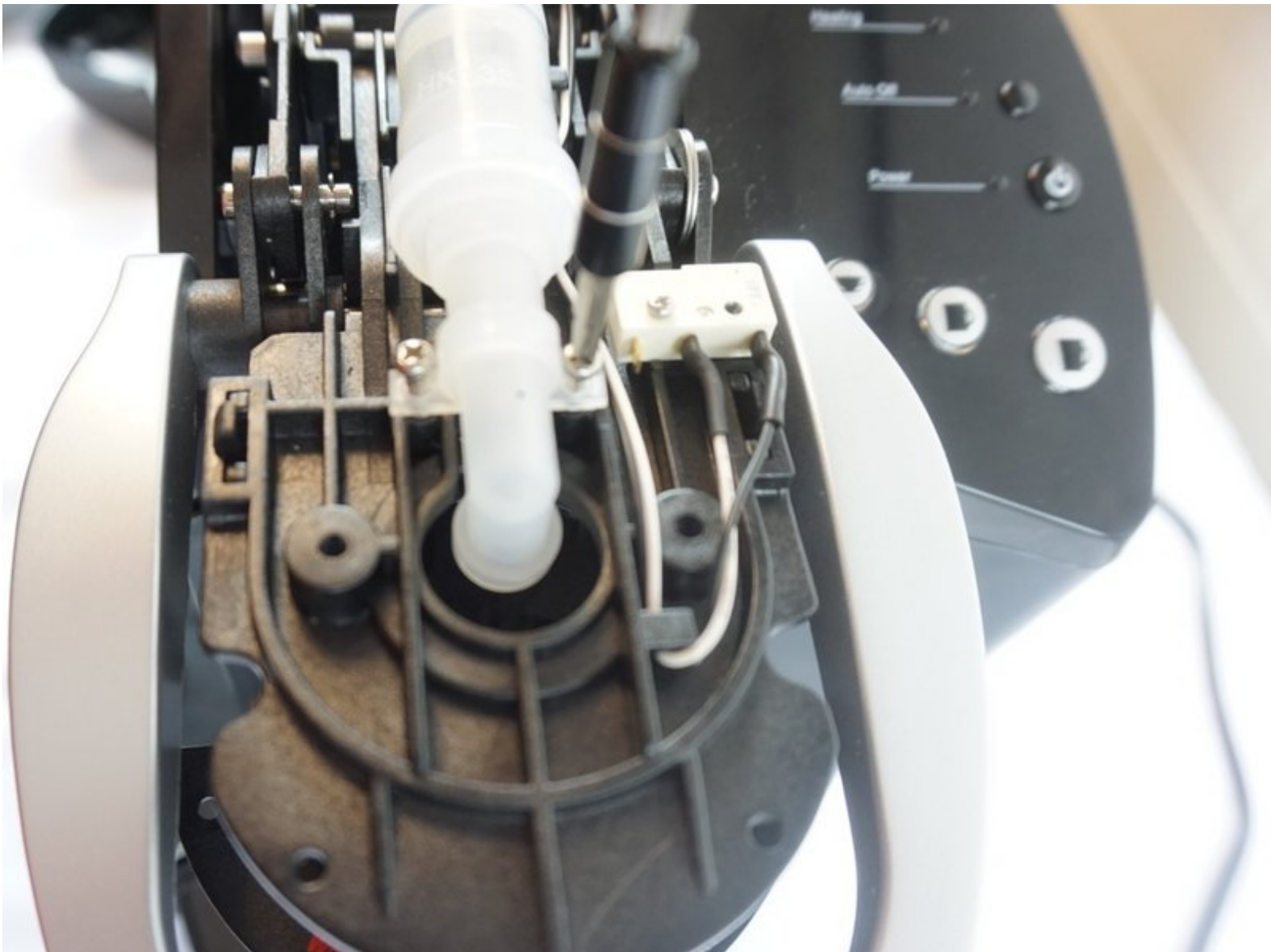




Keurig K40 Top Water Pump Replacement

This guide will replace the top water pump.

Written By: Andrew Bornemann



INTRODUCTION

This guide will demonstrate how to open the top unit of the Keurig K40. It will also demonstrate how to remove and replace the top water pump from a Keurig K40 device.



TOOLS:

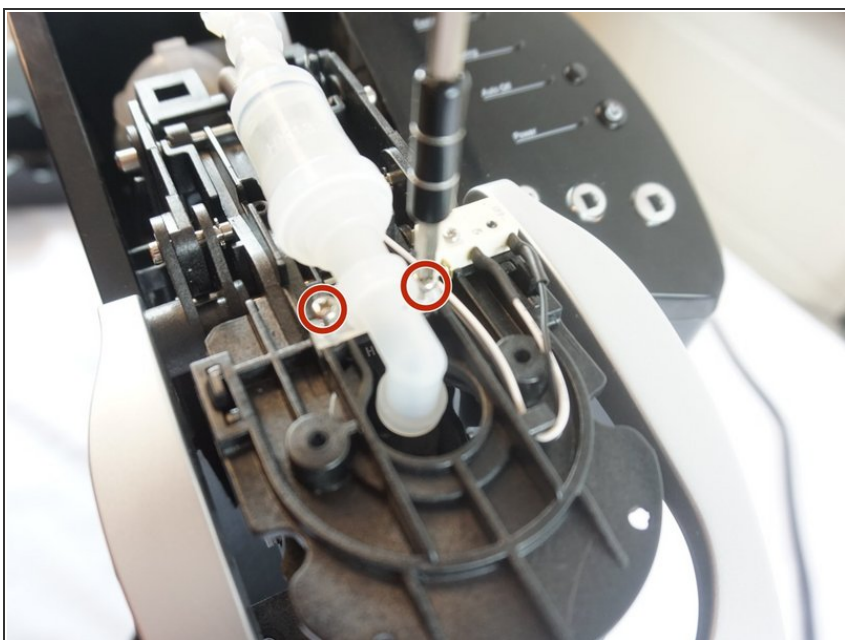
- [Phillips #0 Screwdriver](#) (1)
-

Step 1 — Top Water Pump



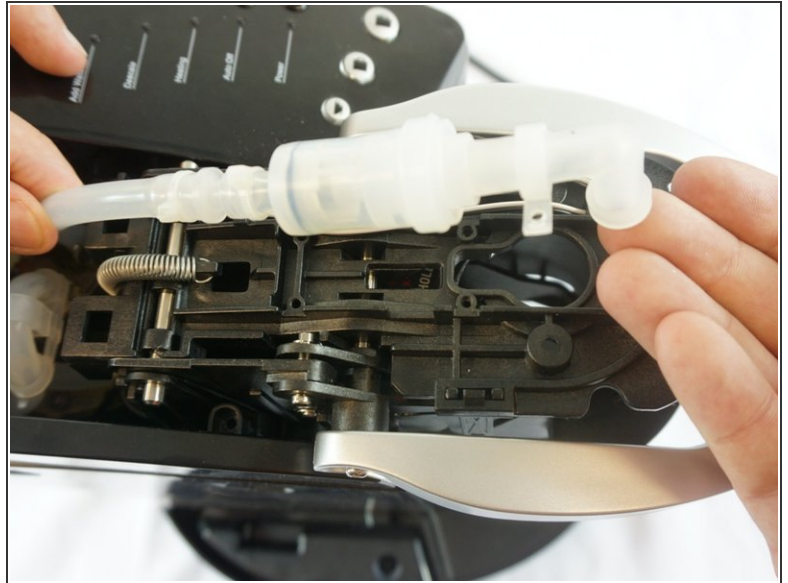
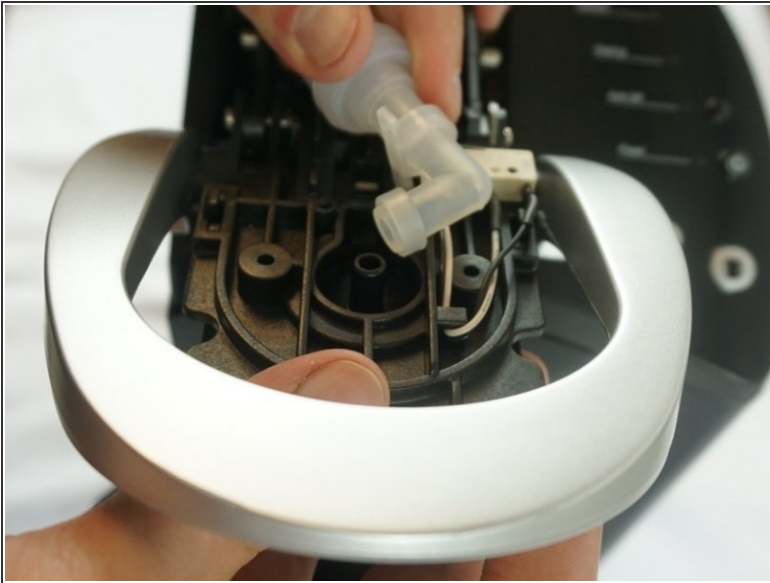
- Begin by removing the top cover from the device.
- ⓘ Remove the cover by gently rocking it back and forth with an emphasis on lowering the left side underneath an internal peg.

Step 2



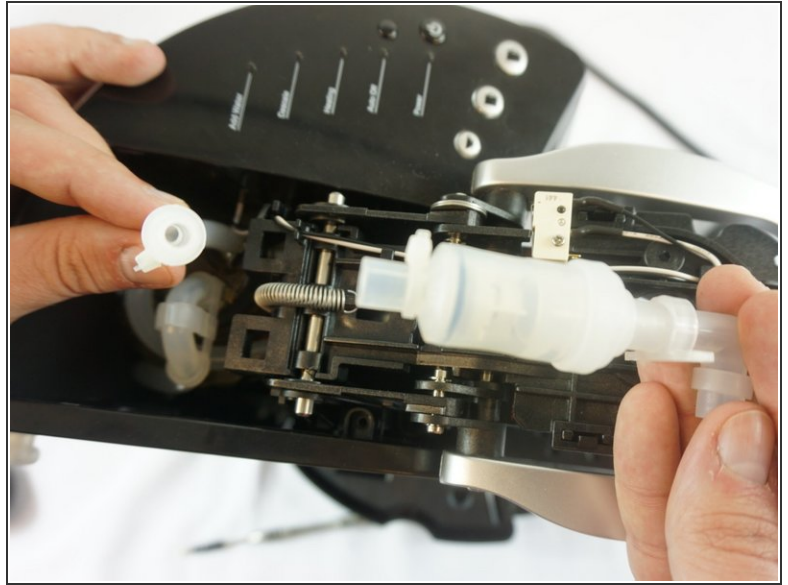
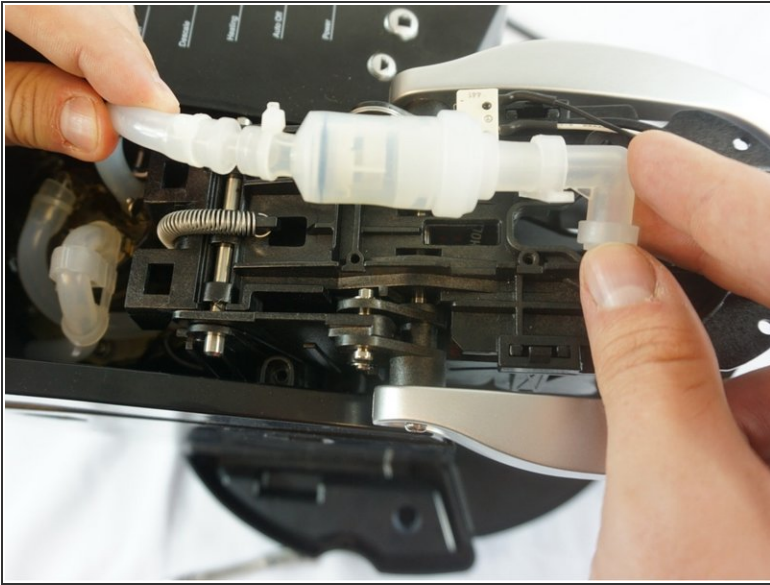
- Unscrew both 1.5mm screws located on the water pump.

Step 3



- Keeping one hand firmly placed on the device, tug upwards on the water pump until it is separated from the device.
- The water pump and pipe should now be loose and easy to move as shown.

Step 4



- Pull on the point where the pipe meets the water pump.
- The pipe will come loose and the water filter will be free and ready to be replaced.

To reassemble your device, follow these instructions in reverse order.