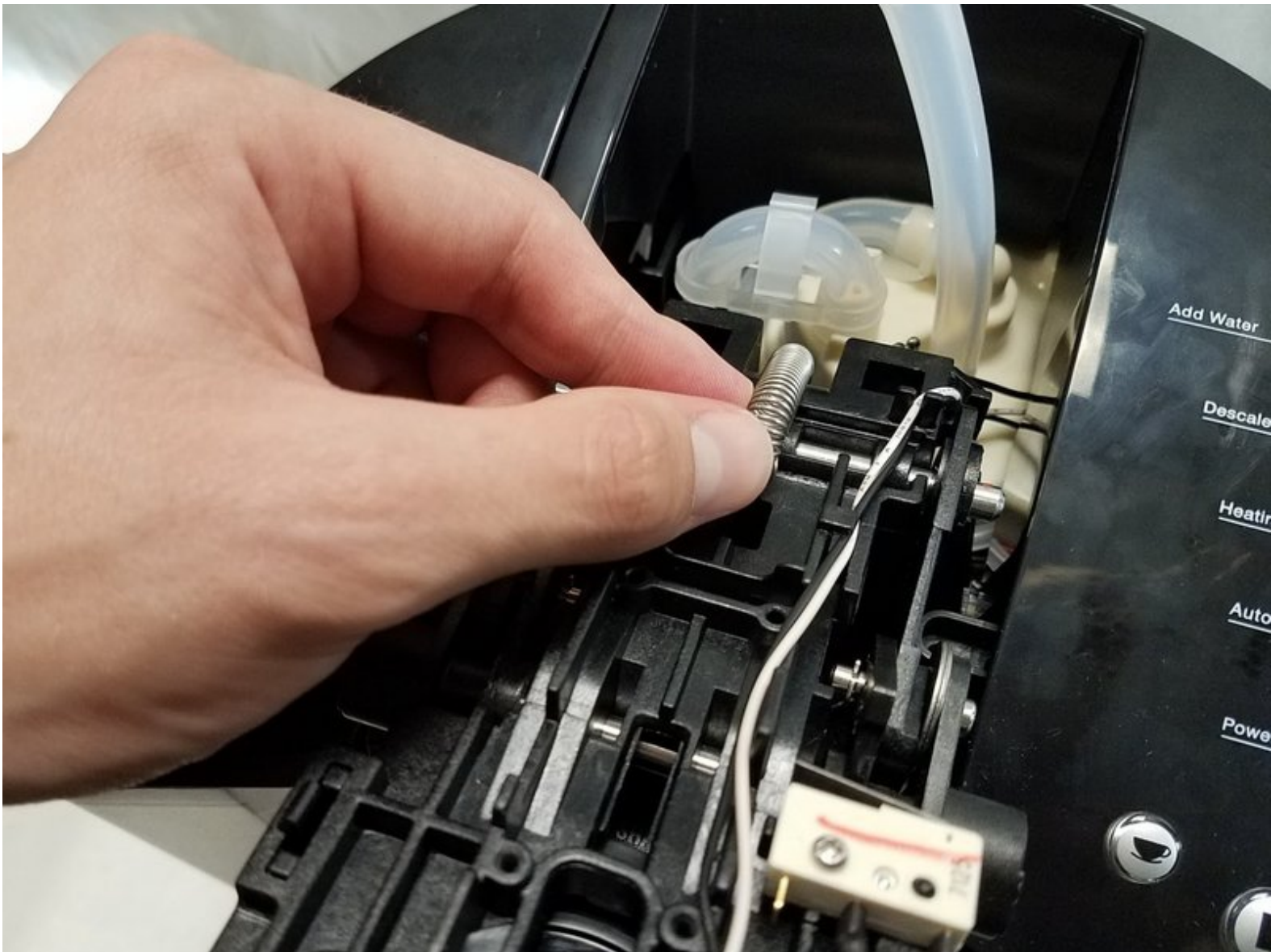




# Keurig K55 Lid Spring Replacement

How to replace Keurig K55 lid spring.

Written By: William O'Brien



---

## INTRODUCTION

Is your Keurig K55 K lid not staying open? If so, you might have a broken or missing spring. Here's a guide to replace the Keurig K55 Lid Spring.

---

### TOOLS:

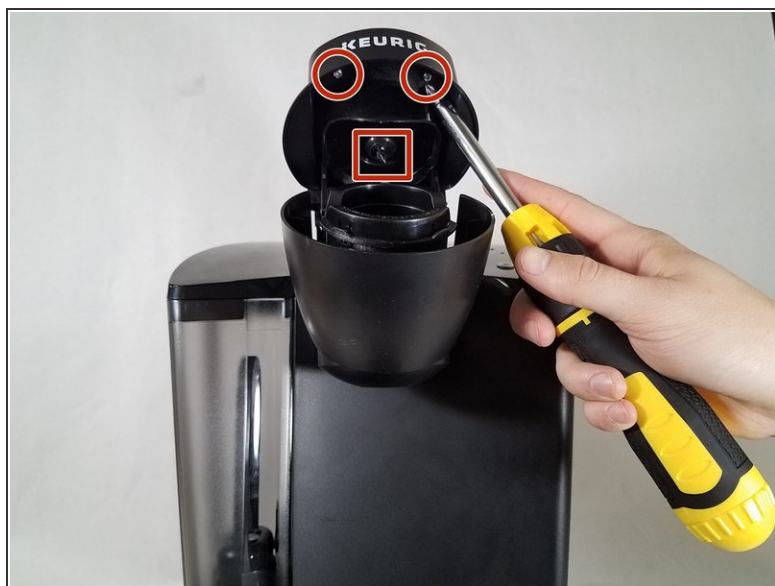
- [Phillips #0 Screwdriver](#) (1)
-

## Step 1 — Secondary Water Pump



- Lift the silver handle up.
- Locate the screw and washer holding the handle in place on each side.
- Remove both 13mm screws and washers using a Phillips #0 screwdriver.

## Step 2



- Grab the handle and pull it upward and toward the rear of the device.
- Lift the lid to the fully open position.
- Remove the two 11mm Phillips screws located on the upper part of the device.

⚠ Be careful removing the screws; the needle here may be sharp.

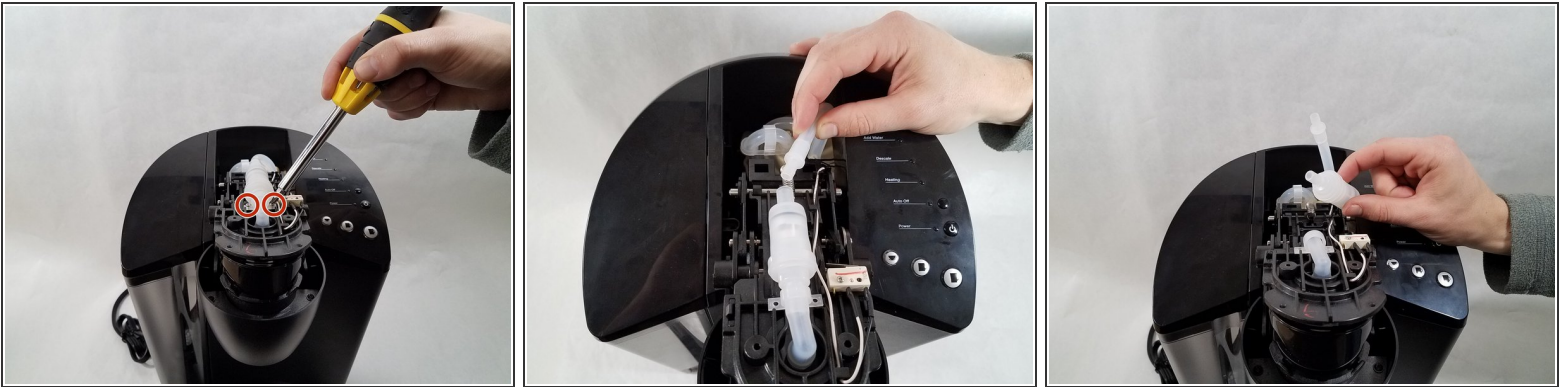


### Step 3



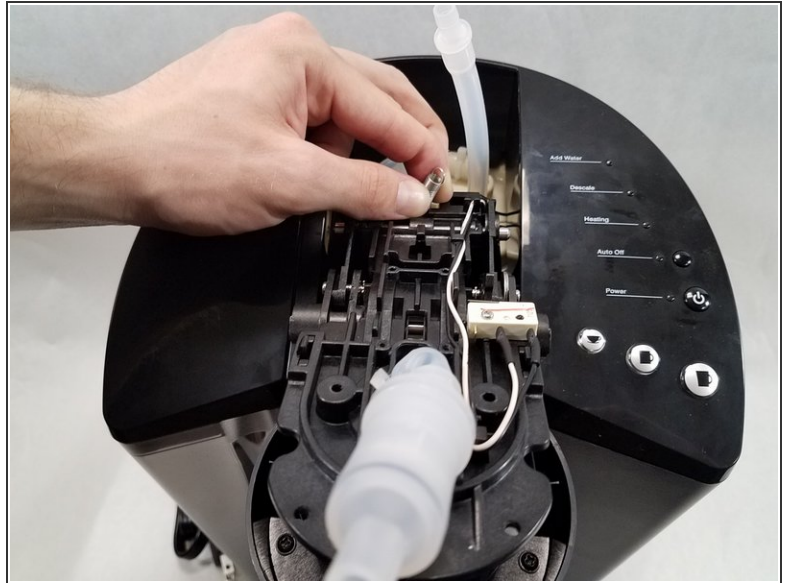
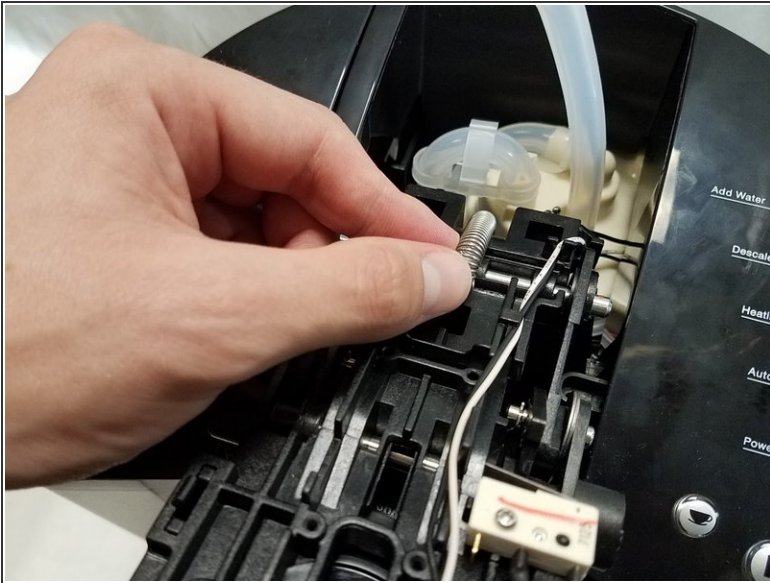
- Lower the lid to just before its closing position.
- Grab the black top cover with the Keurig logo and gently push back toward the rear of the device to release it.
- Gently pull the top cover upward and toward the front of the device to remove it.

### Step 4



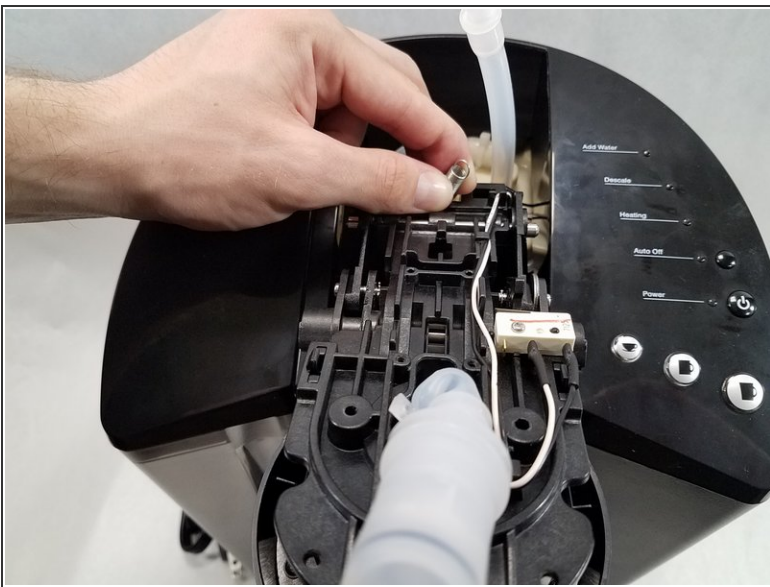
- Remove the two 11mm Phillips head screws securing the water pump.
- Grab the secondary water pump firmly and pull one of the plastic water lines off of the pump.
- Pull the other line from the water pump.

## Step 5 — Lid Spring



- Pull the spring off the front hook using two fingers.
- ⓘ The spring has a lot of tension, so grip the spring end tightly.

## Step 6



- Pull the spring off the other hook.

To reassemble your device, follow these instructions in reverse order.