



Keurig K55 Power Cable Replacement

How to replace the Keurig K55 power cable.

Written By: William O'Brien



INTRODUCTION

If your Keurig is unable to turn on, you may need to replace your power cable with this guide.

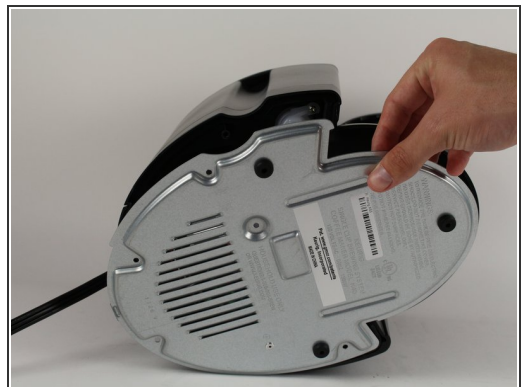
TOOLS:

- [Phillips #0 Screwdriver](#) (1)
-

A black and silver Keurig coffee machine is shown from a front-three-quarter view. A hand is pressing the top button, which is labeled 'KEURIG'. The machine has a control panel on the right side with several buttons and a power switch. The base of the machine features a circular vented area.

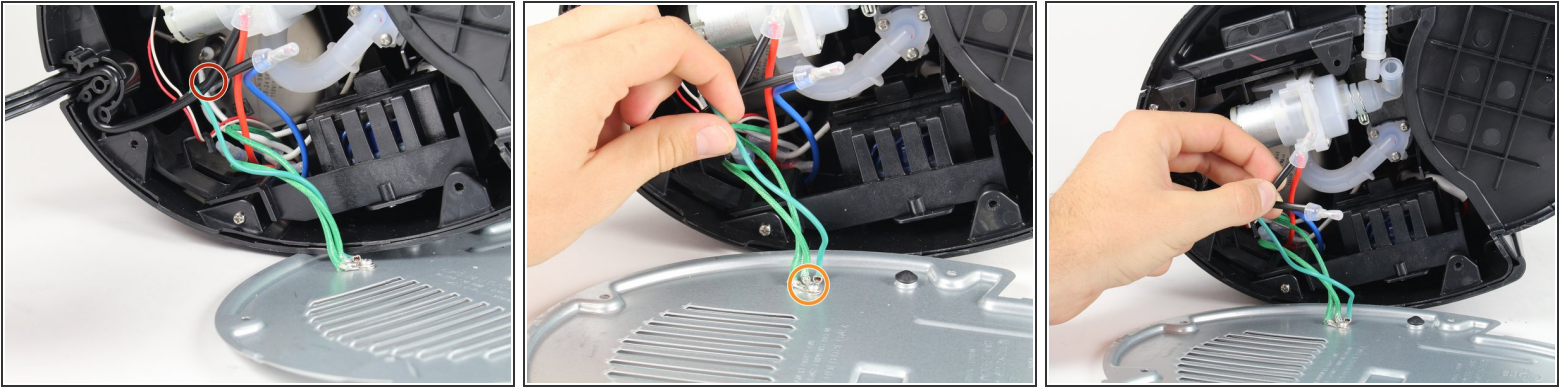


- ## Step 2



- Page 3 of 4

Step 3



- To remove the power cable, highlighted in red, follow iFixit's guide on [soldering](#).
- The ground cable, highlighted in orange, needs to be re-soldered to your new power cable.

To reassemble your device, follow these instructions in reverse order.