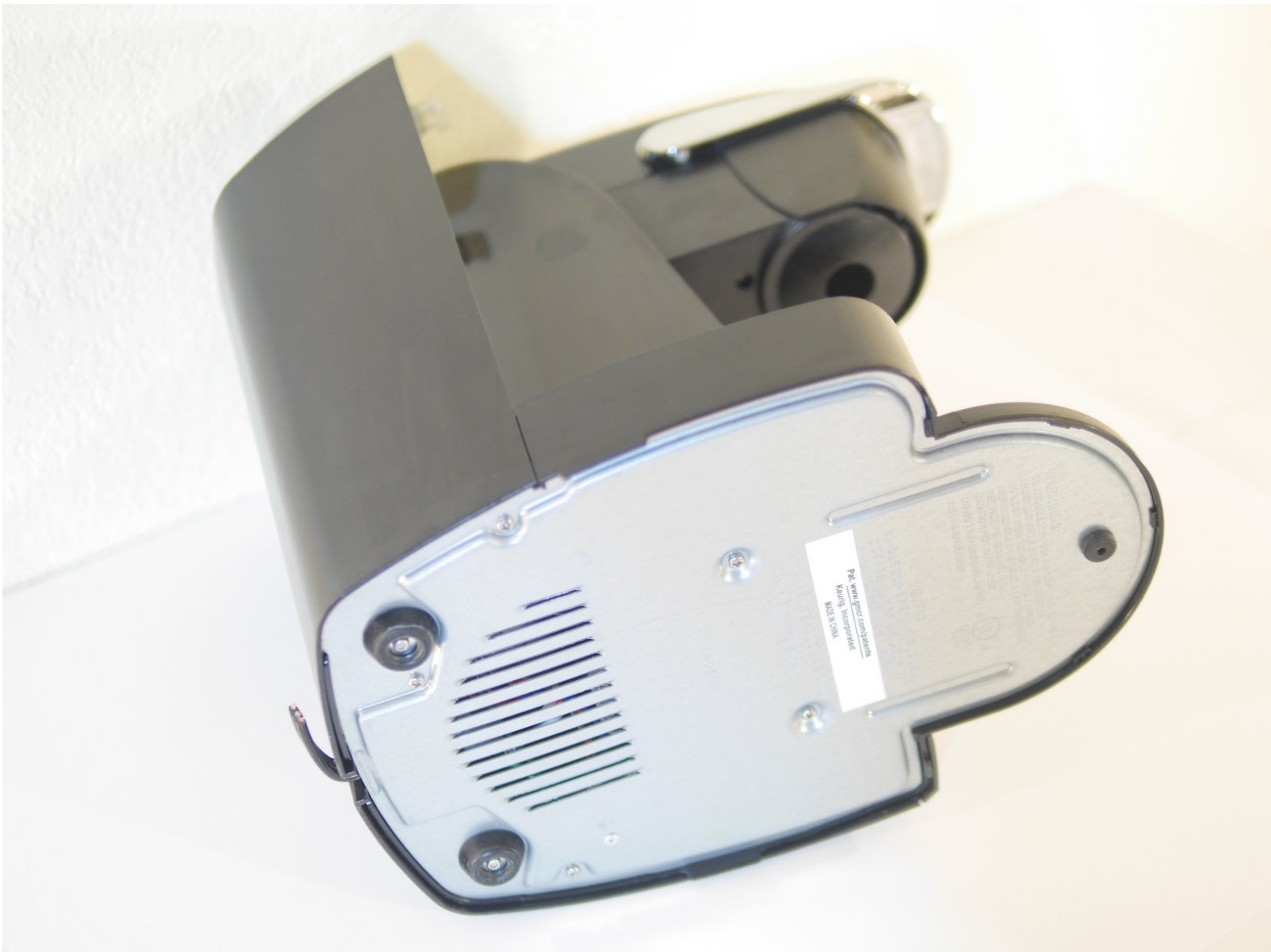




# Keurig K70 Base Plate Replacement

Use this guide to remove the base plate to your Keurig K70. Prerequisite only guide.

Written By: Dominik Smith



---

## INTRODUCTION

This guide will show you how to remove the base plate of the Keurig K70. Removing the base plate is necessary to access most of the internal components for further repair of the device.

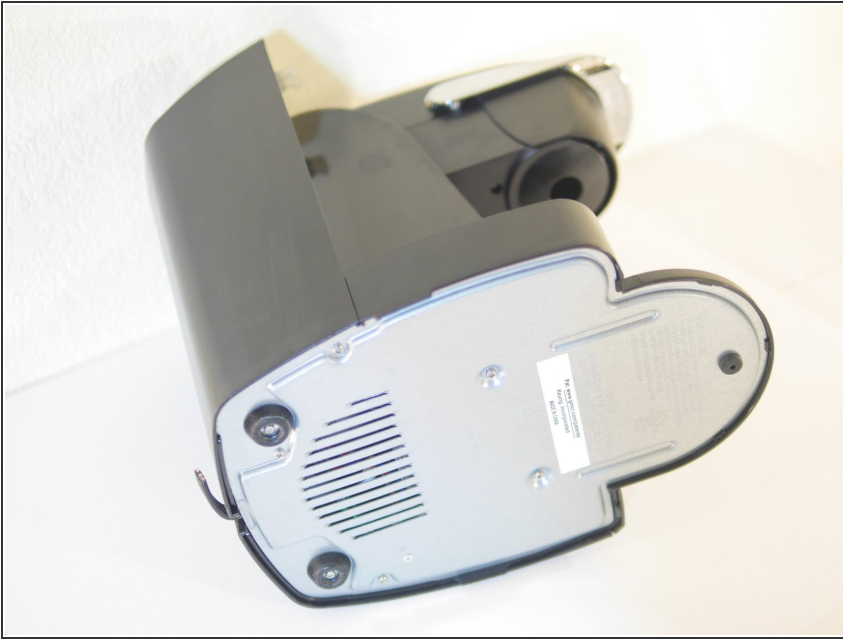
---



### TOOLS:

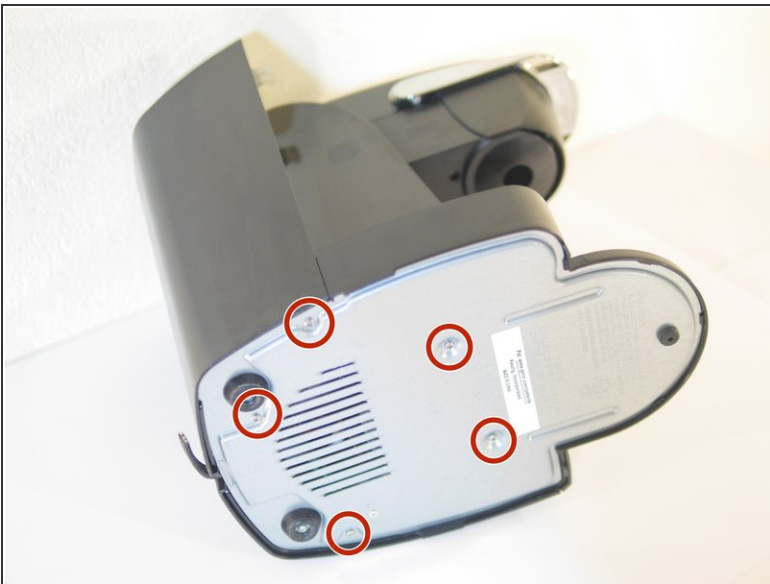
- [Phillips #2 Screwdriver](#) (1)
-

## Step 1 — Base Plate



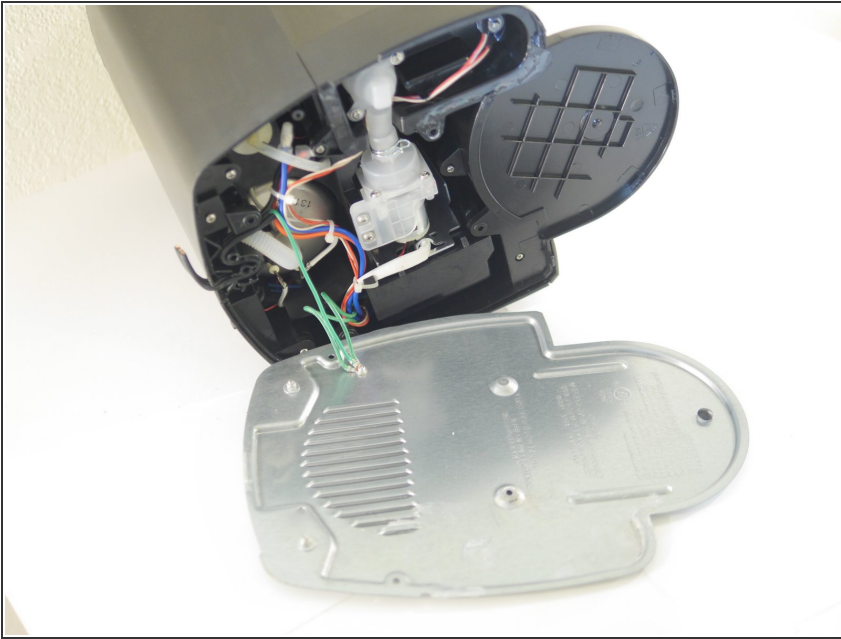
- Rotate the Keurig on its side so that the base plate is accessible.

## Step 2



- Remove the five 12mm Phillips #2 screws from the base plate.

### Step 3



- Remove the base plate by sliding it towards the power cord and then out.

To reassemble your device, follow these instructions in reverse order.