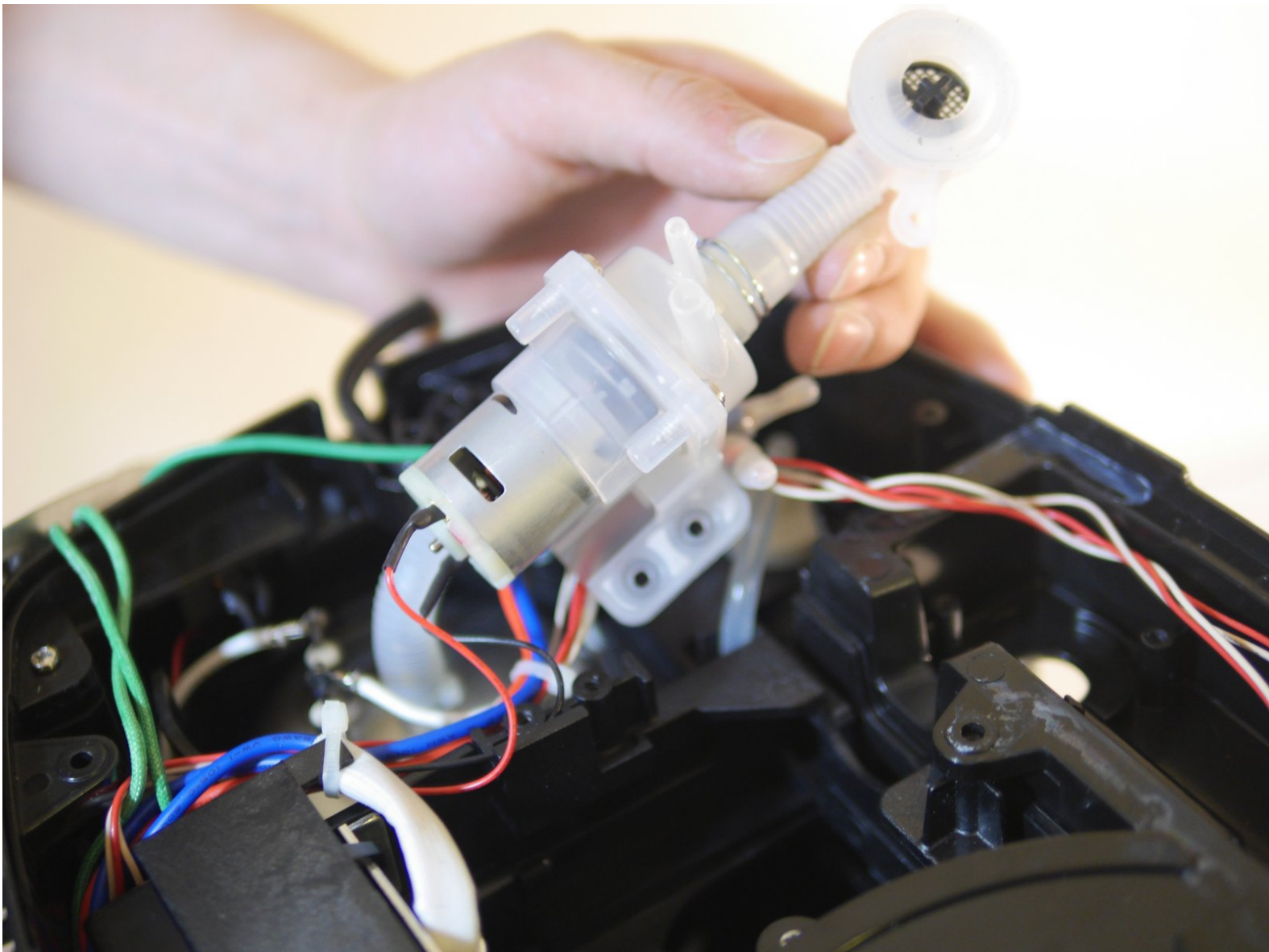




Keurig K70 Water Pump Replacement

Use this guide to replace the water pump in your Keurig K70.

Written By: Dominik Smith



INTRODUCTION

This guide will show you how to remove the water pump inside the Keurig K70. This is useful to know if your Keurig is not pumping water correctly and you need to replace the pump. Keep in mind this guide will require knowledge on how to strip and solder two wires. A guide to do just that will be provided in the necessary step.



TOOLS:

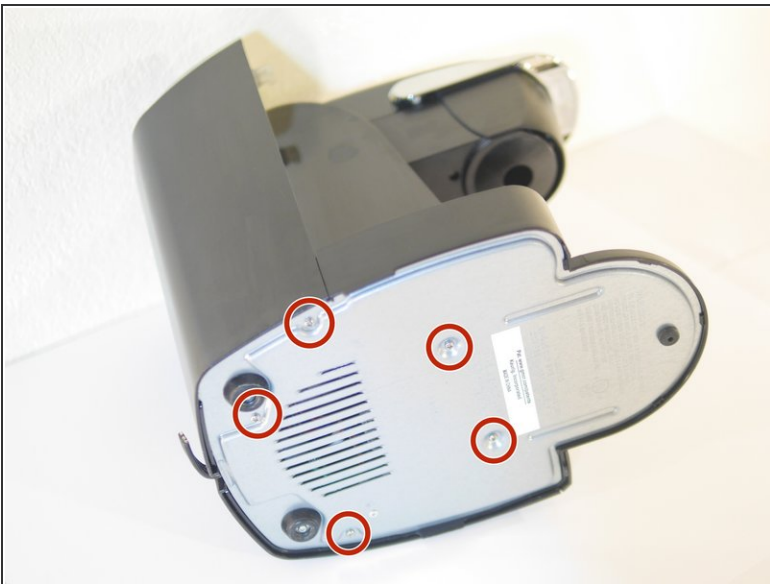
- [Phillips #2 Screwdriver](#) (1)
-

Step 1 — Base Plate



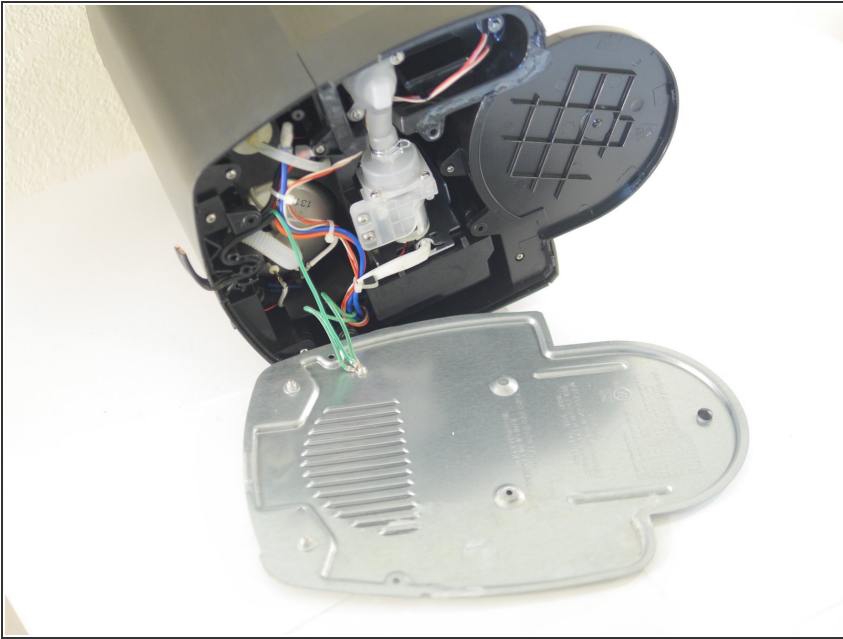
- Rotate the Keurig on its side so that the base plate is accessible.

Step 2



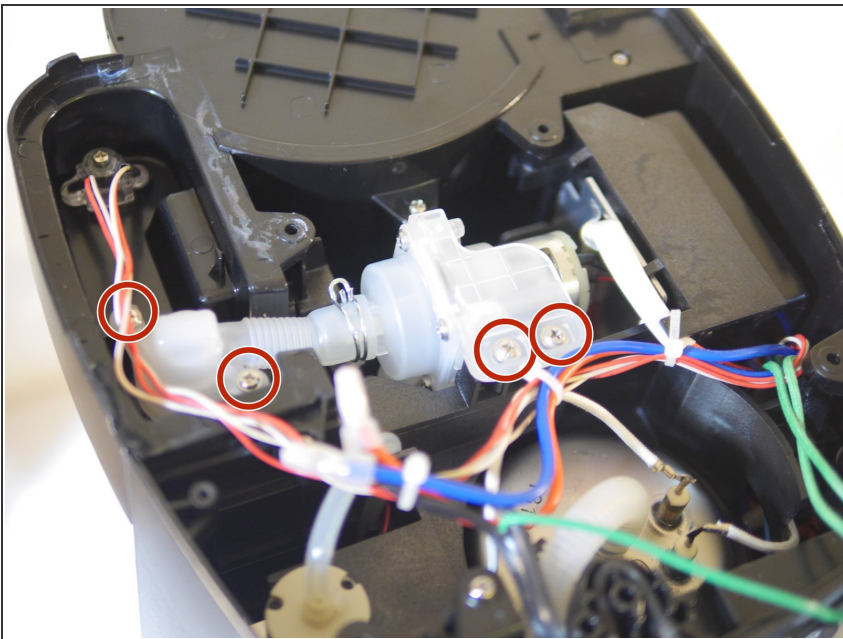
- Remove the five 12mm Phillips #2 screws from the base plate.

Step 3



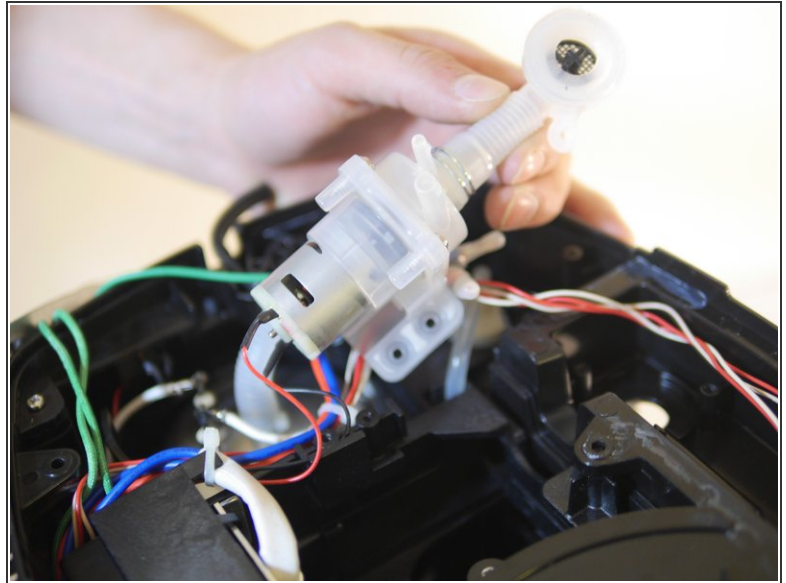
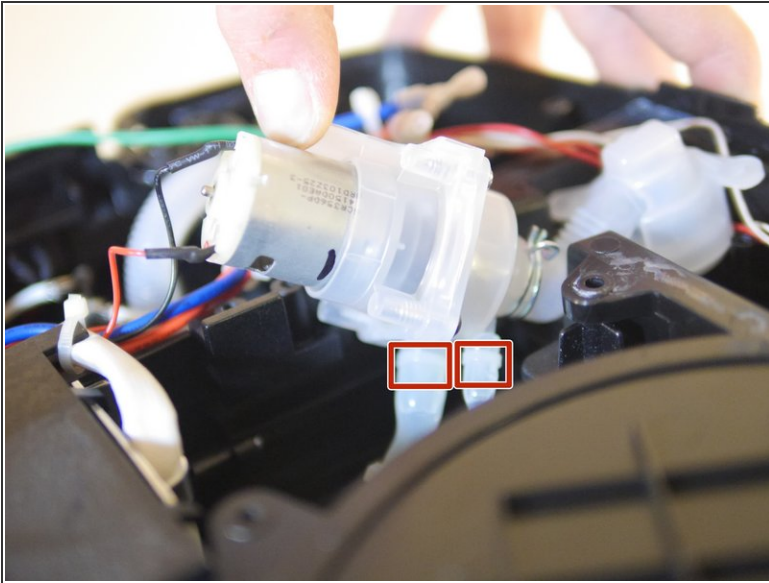
- Remove the base plate by sliding it towards the power cord and then out.

Step 4 — Water Pump



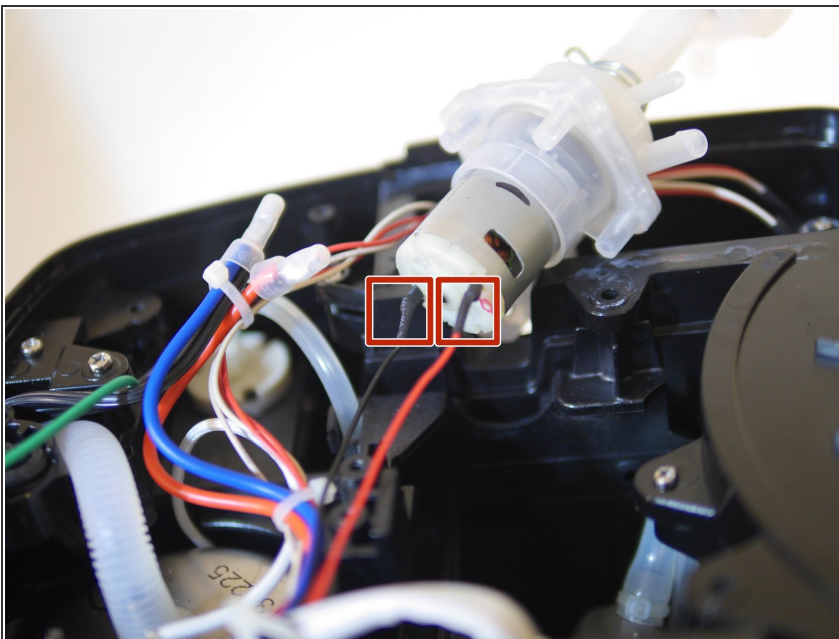
- Unscrew the indicated 12mm Phillips #2 screws.

Step 5



- Cut the indicated zipties with scissors.
- Pull the two tubes out of the water pump. This may require a little force.

Step 6



- Remove the water pump by cutting the two connecting wires. Reconnect a replacement pump [using this guide to join wires with solder](#), or [using this guide to solder connections](#), or by using any other technique to connect wires.

To reassemble your device, follow these instructions in reverse order.