



Keyboard Keys Replacement Guide

Installing missing keys on Gateway LT2104u Laptop.

Written By: Steven Park



INTRODUCTION

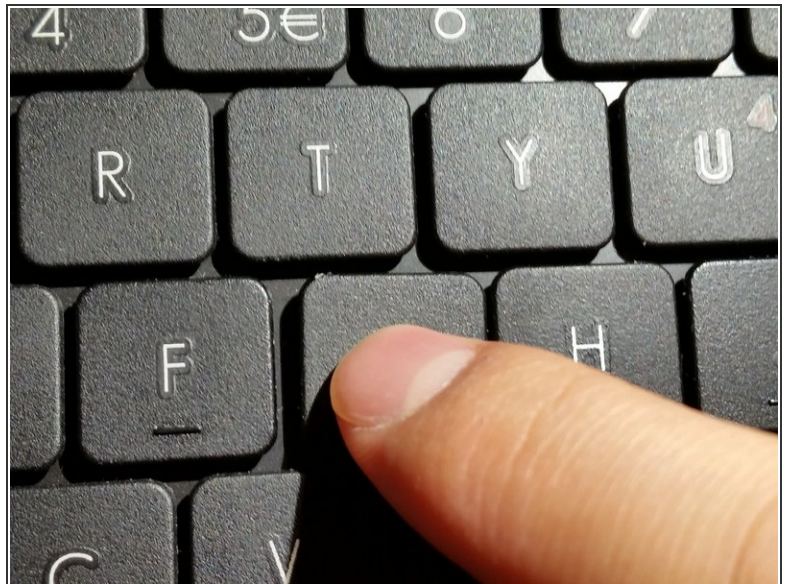
This guide will show two methods for installing a missing key on a Gateway LT2104u Laptop keyboard.

Step 1 — Keyboard Keys



- On the keyboard, locate the position of the missing key.

Step 2



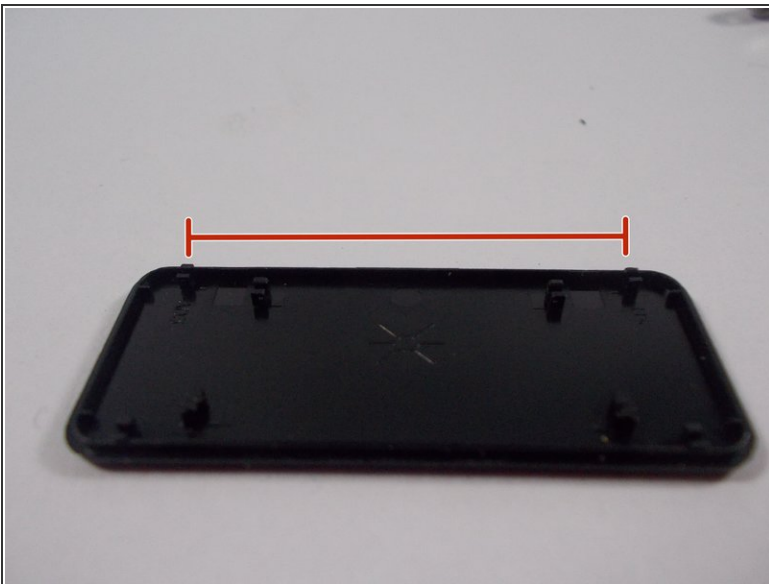
- ① Before placing, check that the key is properly orientated. The letter side should be face up.
- Next, place the key in the empty slot, then apply light pressure until the key snaps into place. Press the key a few times to confirm it is secure and working properly.

Step 3



- For large rectangular keys the process is similar. Instead of placing the key onto the keyboard first, there are **two metal pins** for this key to attach onto.

Step 4



- Before installing, the **plastic receivers** on the bottom of key need to be lined up properly with the metal pins.
- Once attached, apply light pressure until the key snaps into place on the keyboard. Then press a few the key a few times to confirm it works.

Step 5



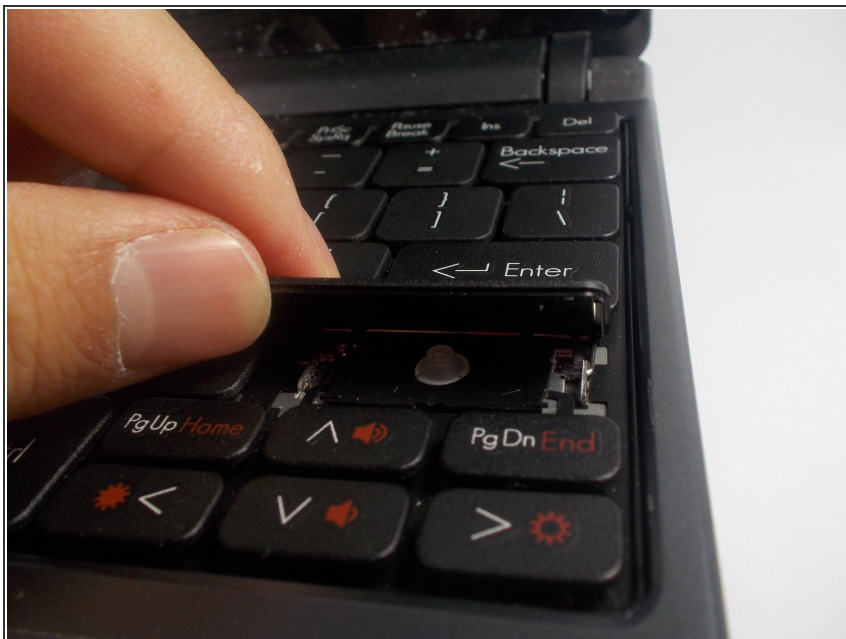
- If it is hard to fit the key onto the metal pin, you can remove the metal pin from the keyboard.

Step 6



- After removing the pin, snap the metal pin onto the key.

Step 7



- Next, you need to reattach the metal pin onto the keyboard. Finally, apply light pressure onto the key until the key snaps into place onto the keyboard.

To reassemble your device, follow these instructions in reverse order.