



Keyboard Replacement guide

This is a repair guide to change the laptop keyboard.

Written By: Steven Park



INTRODUCTION

This guide demonstrates how to safely remove and replace a Gateway LT2104u laptop key board in order to preserve the function of the device.



TOOLS:

- [Spudger](#) (1)
- [iFixit Opening Tools](#) (1)



PARTS:

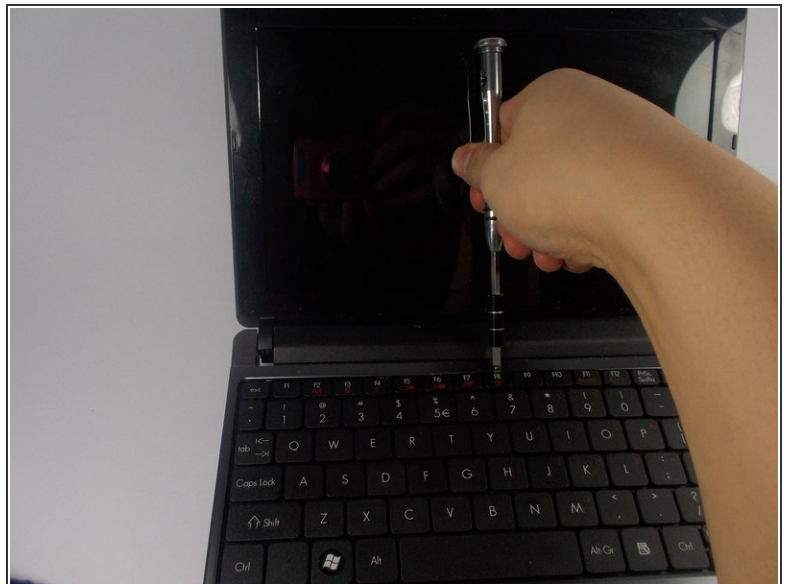
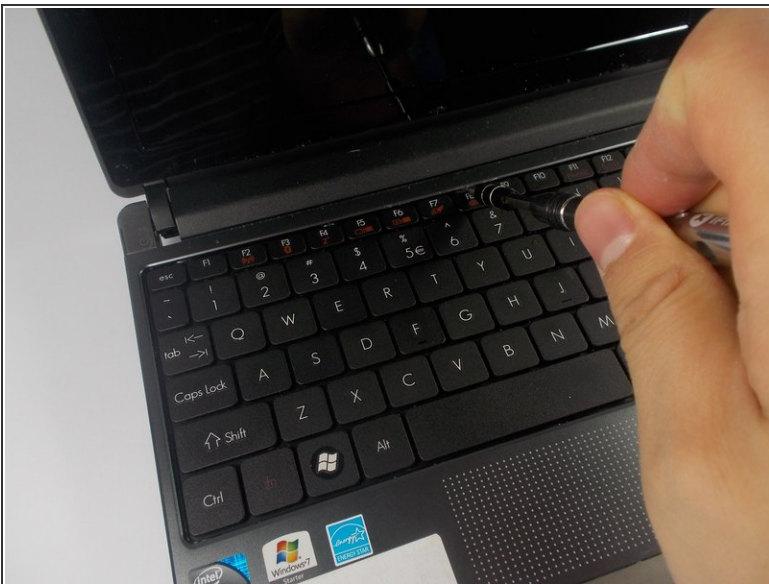
- [keyboard panel](#) (1)

Step 1 — Keyboard



- Locate the button right above the F8 key.

Step 2



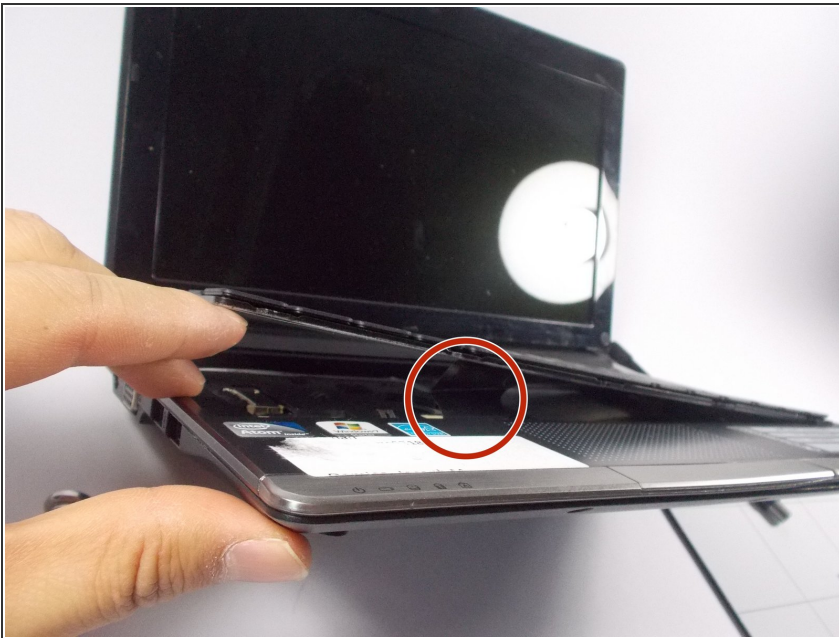
- Use a spudger or plastic opening tool to push the button away from you.

Step 3



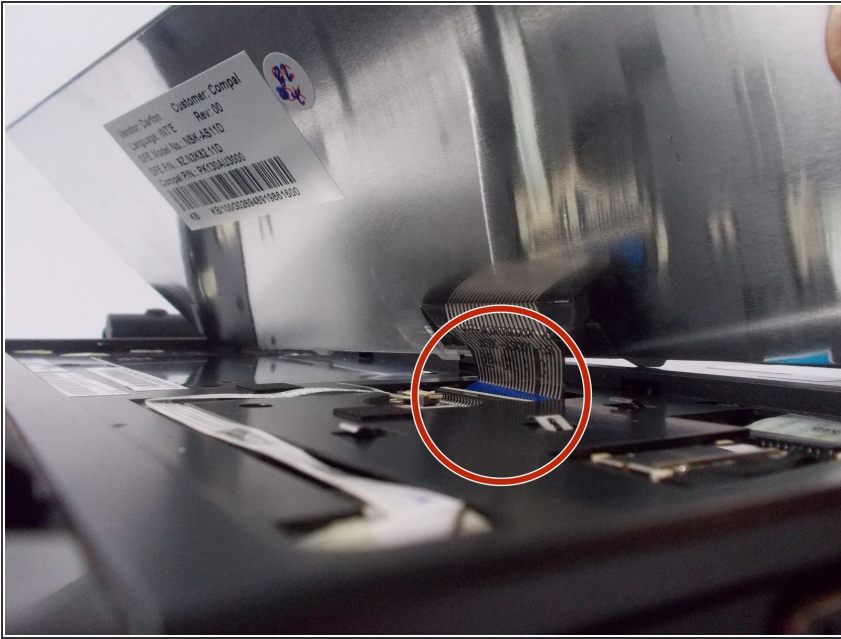
- Insert the spudger under the keyboard and slide it along the length of the keyboard.

Step 4



⚠ Do not attempt to remove the keyboard. It is still attached to the laptop by a ribbon cable.

Step 5



- Remove the ribbon cable from the connector.

To reassemble your device, follow these instructions in reverse order.