



Kid Galaxy Morphibians Explorer Controller

Internal Chip Replacement

Replacing the internal chip of the controller.

Written By: Rusbell Gonzalez



INTRODUCTION

This guide explains how to replace the internal chip on the Kid Galaxy Morphibians Explorer Controller.

TOOLS:

- [Phillips #1 Screwdriver](#) (1)
 - [Phillips #2 Screwdriver](#) (1)
-

Step 1 — Batteries



- Turn the controller over to the backside and locate the battery cover screw.

Step 2



- The battery cover 8.0mm Phillips #2 screw is on the bottom left handle. There is a plastic washer holding the screw to the cover, so completely loosen the screw, but do not remove.

Step 3



- Once the screw is removed lift the battery cover up from the controller.

Step 4



- Remove the 2 AA batteries.

Step 5 — Internal Chip



- Remove both 6.0mm Phillips #1 screws holding the D-pads in place.

Step 6



- Insert wisdom here.

Step 7



- Remove the six 8.1 Phillips #1 screws.

Step 8



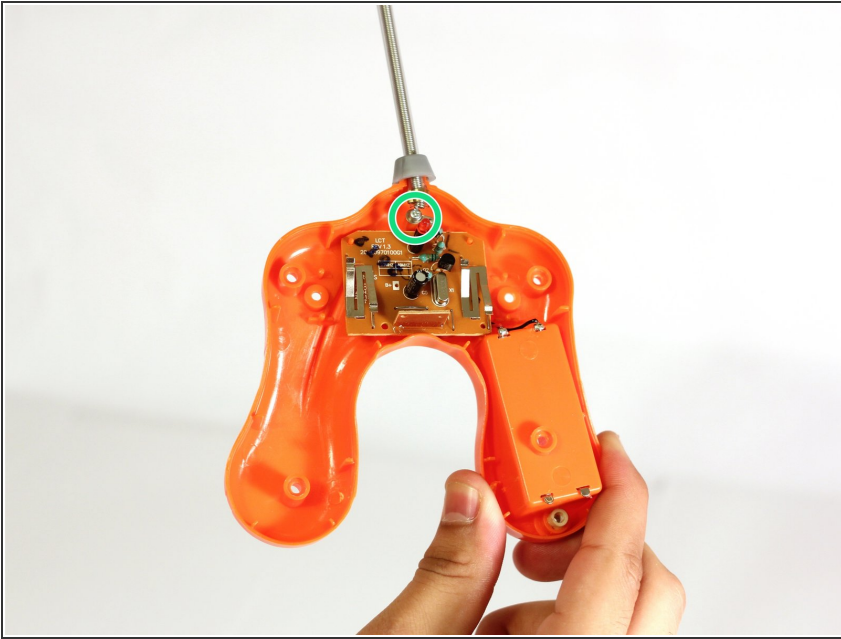
- Lift the antenna holder away from the controller towards the top of the antenna.

Step 9



- ⓘ Before you separate both halves of the controller make sure the battery holder is facing you so the D-pads stay in place.
- Separate both halves of the controller.

Step 10



- Remove the 7.9 Phillips #1 screw that holds both the antenna and the internal chip.

Step 11



- Remove the internal chip by pulling it away from the controller.
- Remove both the positive(red wire) and negative(black wire) from the battery terminals.
- Reverse the steps to put everything back together.

To reassemble your device, follow these instructions in reverse order.