



# Kid Galaxy Morphibians Explorer On/Off Switch Replacement

Replace the on/off switch to bring back the ability to turn your Kid Galaxy Morphibian Explorer on and off.

Written By: Eric Studstrup



---

## INTRODUCTION

Before starting your repair, remove the battery to take away all risk of electrical shock. While taking apart the Kid Galaxy Morphibian Explorer there are many small moving parts that are easily broken, so be cautious when removing components. There are many wires once you have removed the outer cover of the Kid Galaxy Explorer, so be aware of which wires are being removed and where they will be put back.



### TOOLS:

- [Phillips #00 Screwdriver](#) (1)
  - [Phillips #2 Screwdriver](#) (1)
-

## Step 1 — Remove the Top Cover



- First, completely loosen the 9.6 mm Phillips #2 screw on top. There is a plastic washer that holds the screw to the top cover, so it will not need to be taken out.

## Step 2



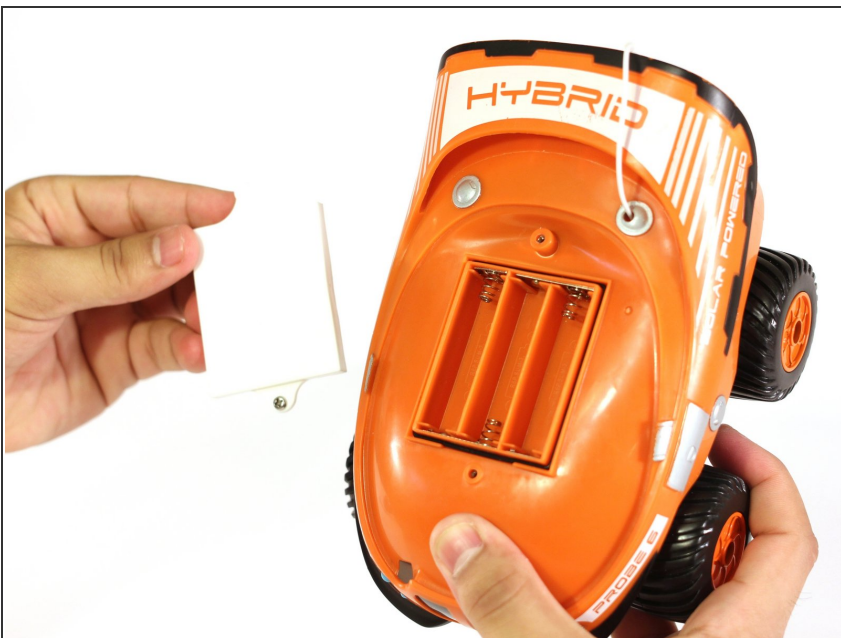
- After the screw has been loosened, lift the cover off.

### Step 3



- Completely loosen the 9.6 mm Phillips #2 screw from the battery cover. Once again, there is a plastic washer to hold the screw to the cover.

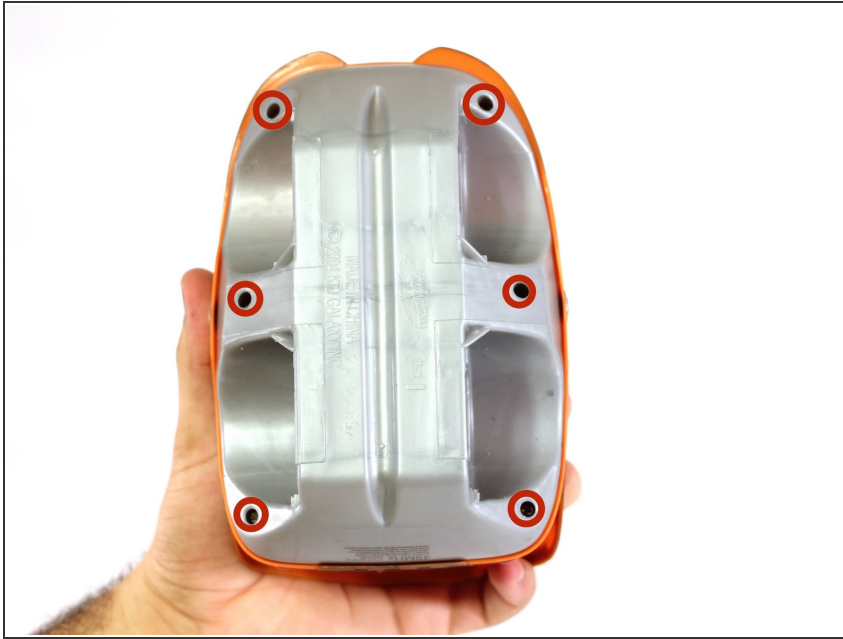
### Step 4



- After the screw is loosened, lift the battery cover off the top cover to gain access to the batteries.
- Turn the RC car over to reach the six screws on the bottom.

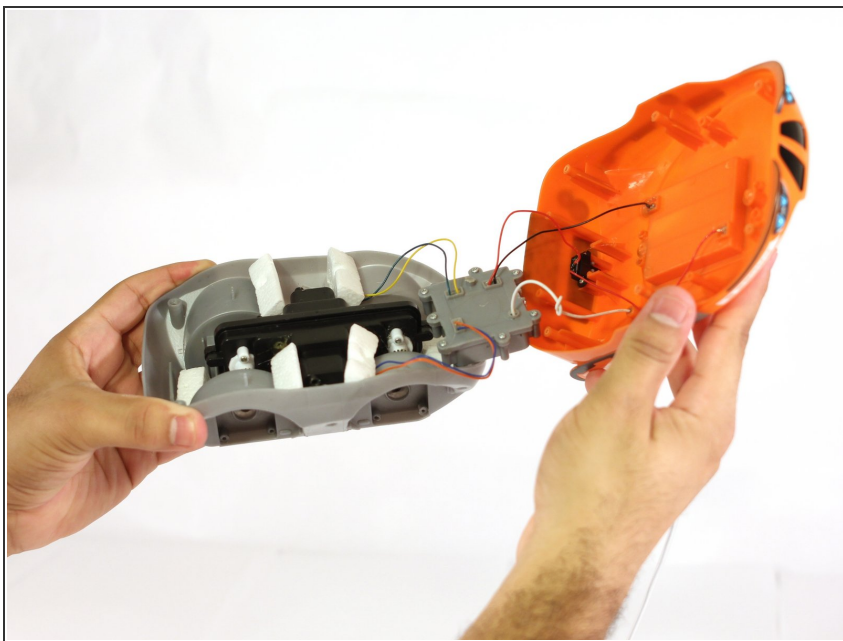


## Step 5



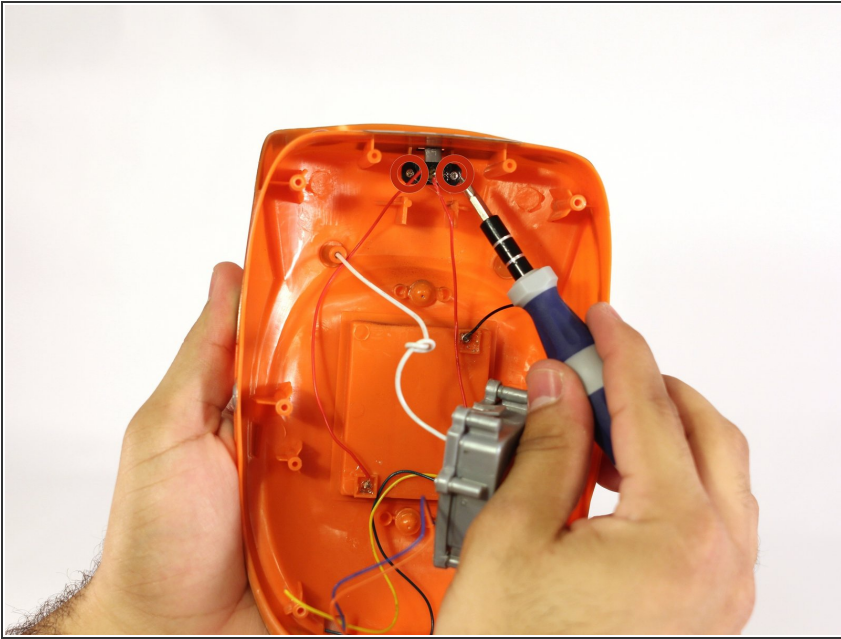
- Remove the six 11.6 mm Phillips #2 screws on the bottom cover.
- (Wheels are removed in this picture to clearly show screw location. They do not need to be removed for this step)

## Step 6



- Lift the top Cover off the car.

## Step 7 — On/Off Switch



- On the top of the inside cover you will see the back side of the on/off switch. Remove the two 7.2 mm Philips #00 head screws holding the switch in place.

## Step 8



- Gently pull the on/off switch off the inside cover.
- Remove the positive (red wire) and negative (black wire) terminals from the bottom of the batter cover. Snip the wires using wire cutters.
- Remove to freed on/off switch from the inside cover.

To reassemble your device, follow these instructions in reverse order.