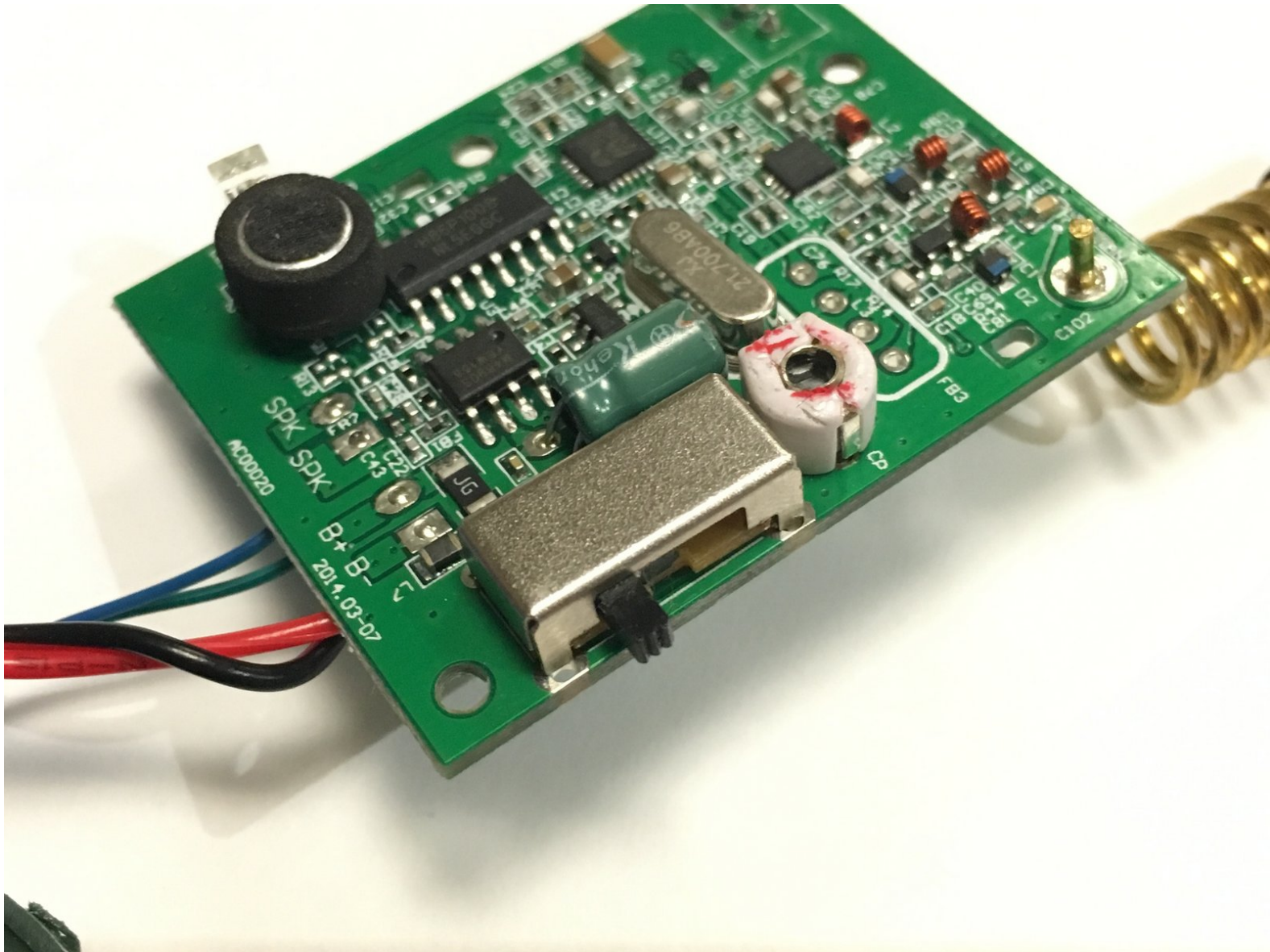




Kidzlane Walkie-Talkie Power Button Replacement

You will be able to replace the power button. if you successfully follow the rules, you will be able to replace the button securely.

Written By: Amin



INTRODUCTION

You will need to use solder device in order to be able to replace the power button.



TOOLS:

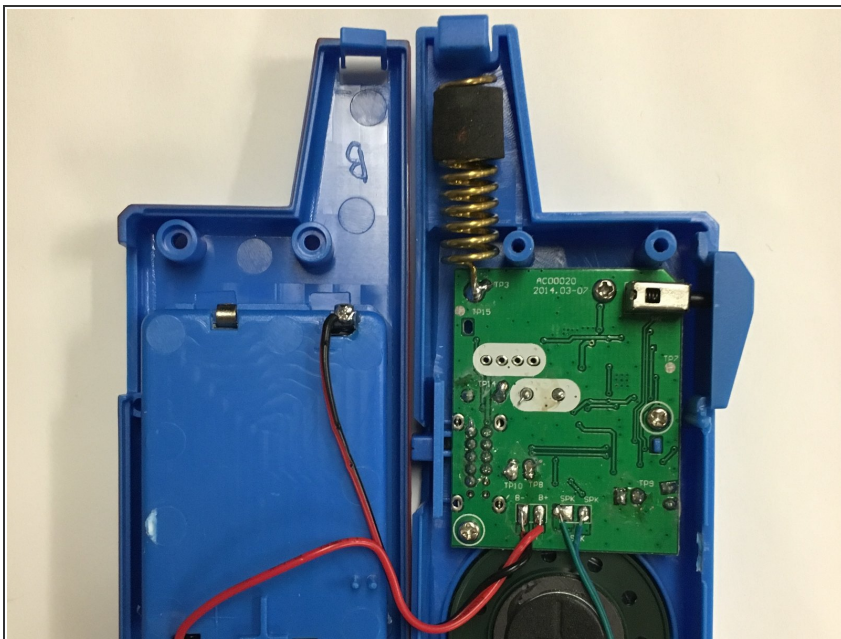
- [Soldering Workstation](#) (1)
 - [Philips screwdriver](#) (1)
-

Step 1 — Power Button



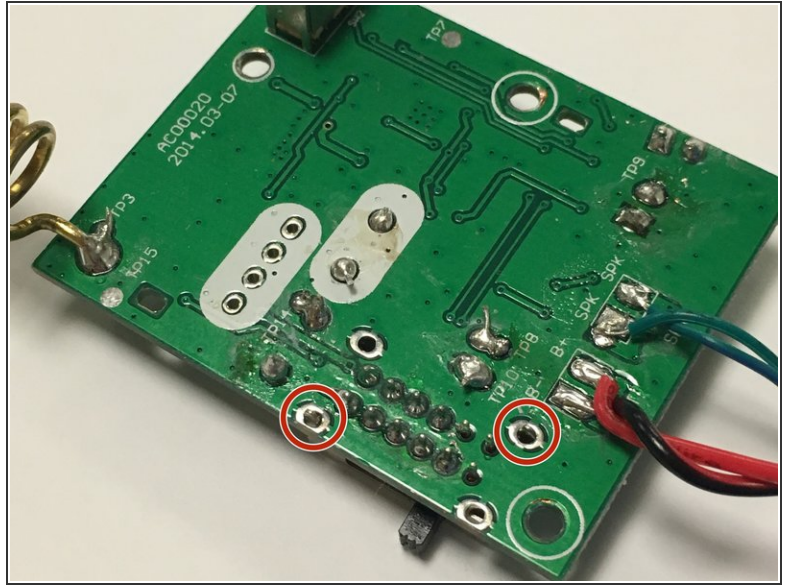
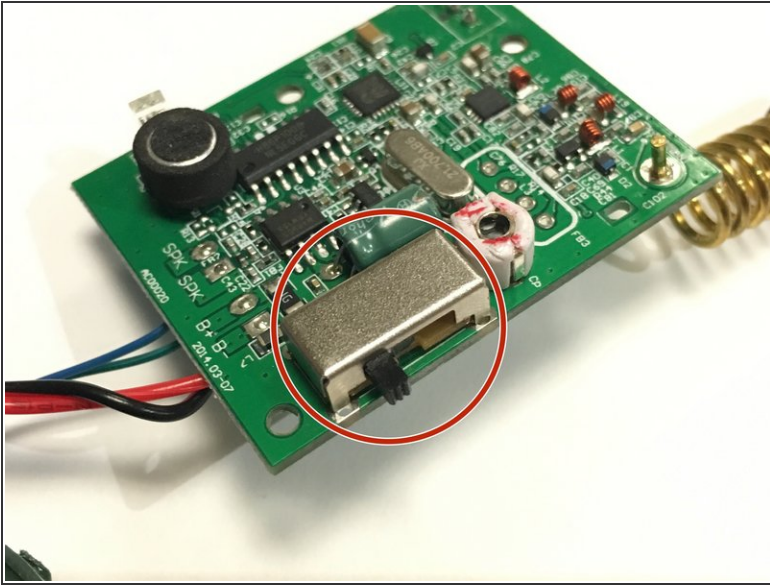
- Use a screwdriver to remove the four pictured 4mm screws.

Step 2



- Slowly separate the cases of the device. Try not to damage the wires connecting the two pieces.
- Keep the two pieces away from each other so you can follow the next step accordingly.

Step 3



- Use the soldering iron to remove the broken switch.
- Push down on the metal locks to separate the switch from the motherboard.

To reassemble your device, follow these instructions in reverse order.