



# Kindle 7th Generation Battery Replacement

The Kindle's battery is damaged or does not hold a charge.

Written By: Abby Roulier



# INTRODUCTION

Having battery issues that require replacement? Well you're in the right place. You're also in luck: the battery is the easiest internal component of the Kindle 7th generation to replace. Follow this guide and your Kindle should be working in no time.



## TOOLS:

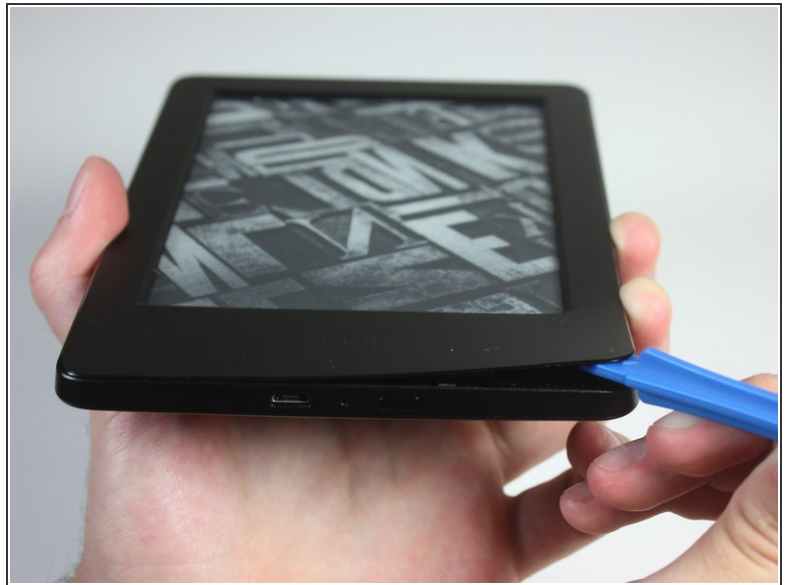
- [iFixit Opening Tools](#) (1)
- [T5 Torx Screwdriver](#) (1)
- [Magnetic Project Mat](#) (1)
- [Precision Tweezers Set](#) (1)



## PARTS:

- [Kindle \(7th Generation\) Replacement Battery](#) (1)

## Step 1 — Front Panel



 Power off your Kindle before beginning disassembly.

- At each corner, use the blue plastic opening tool to unhook and separate the front panel from the adhesive.
- Run the tool along the seams to pry open the front panel.

## Step 2



- Peel the front panel off to remove it from the Kindle.
- ⚠ If this is the first time the front panel has been removed, the adhesive may require a significant amount of force to undo.
- To prevent damaging the front panel, peel the panel from the corners towards the middle of the Kindle.
- ★ When reassembling your device, if you are replacing the front panel, additional adhesive may be required.



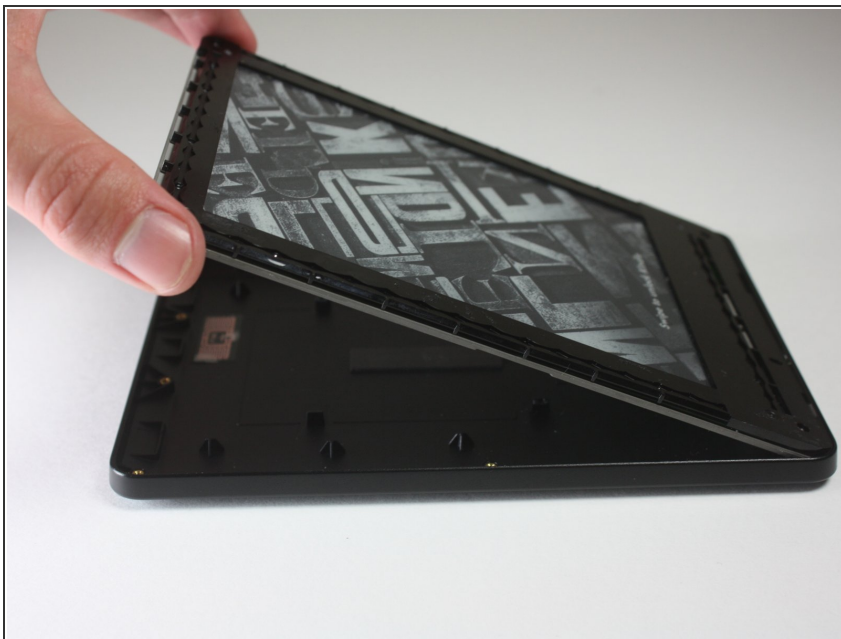
### Step 3 — Back Panel



- Remove the ten 5.0 mm Phillip Head screws with the T5 Torx screwdriver.

**i** A magnetized screw mat can help you keep track of your screws.

### Step 4



- Working evenly along the corners and edges, separate the internal contents from the back panel.

**i** There are many clips securing the screen to the back panel. Force will be required to remove the back, but you should never feel that the Kindle may break.

## Step 5 — Battery



- Flip the Kindle over, exposing the battery and motherboard.

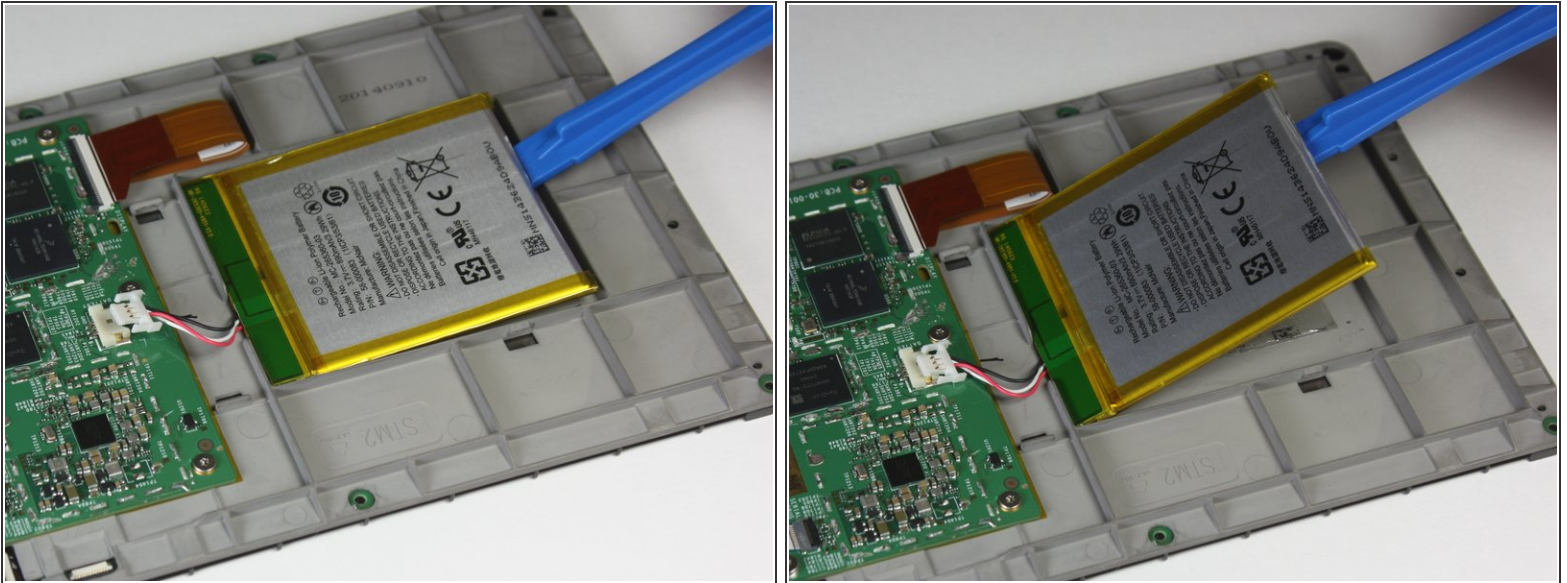
## Step 6



- Use the blunted precision tweezers to pinch the ends of the clip securing the battery cord to the motherboard.
- Gently slide the cord from the motherboard connection.



## Step 7



- Use the plastic opening tool to pry the battery from the backside of the screen.
- Set the battery aside.
- ⓘ **The battery has excessive adhesive so this may take some extra effort.**
- ✦ If replacing your battery, **safely** dispose of your damaged battery and use adhesive to insert the new battery.

To reassemble your device, follow these instructions in reverse order.