



Written By: aaa





TOOLS:

- [iFixit Opening Tools](#) (1)
- [Spudger](#) (1)
- [T4 Torx Screwdriver](#) (1)



PARTS:

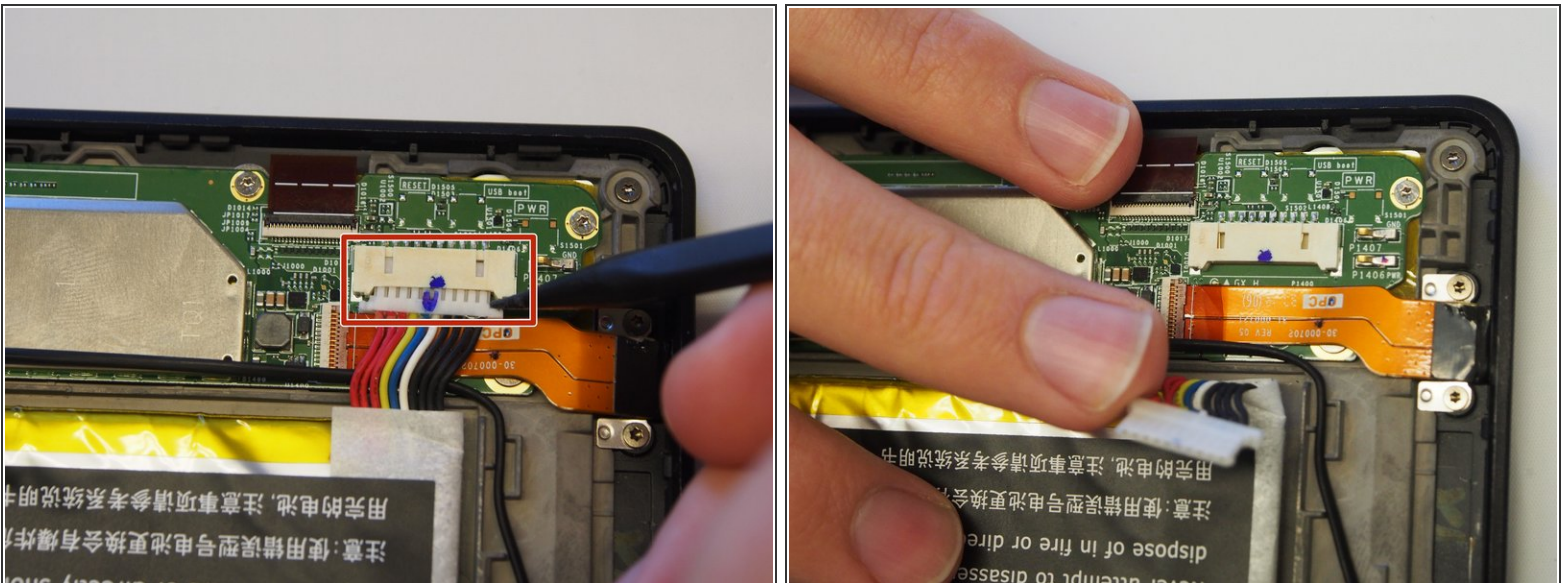
- [Kindle Fire HD 7" \(2013, 2nd Gen\) Motherboard](#) (1)
- [Kindle Fire HD 7" \(2nd Gen\) 2013 Screw Set](#) (1)

Step 1 — Motherboard



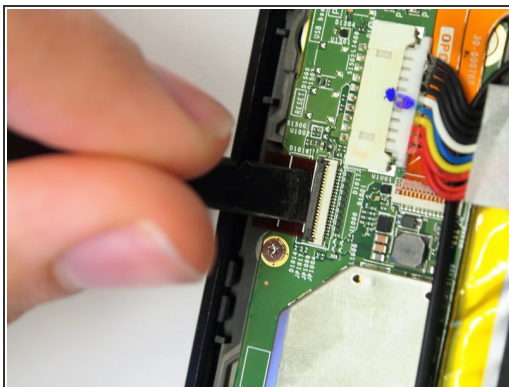
- Open up the device by using a plastic opening tool in order to avoid damaging the device.
- To do so, find the seam along the outer edge of the device and use the plastic tool to pry the back panel up. Doing so may take some force and patience.

Step 2



- Locate the battery's power ribbon.
- Use the nylon spudger to disconnect the ribbon from the motherboard.

Step 3



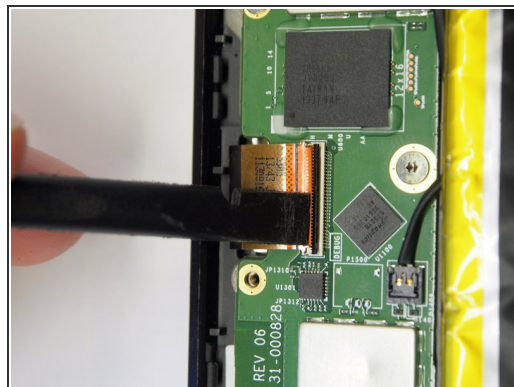
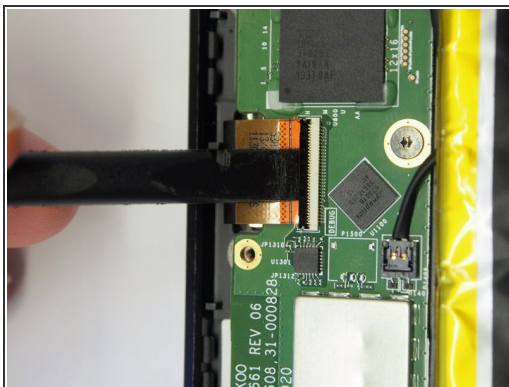
- Identify the ribbon at the top left of the tablet.
- Use a nylon spudger to lift the black tab holding the ribbon.

Step 4



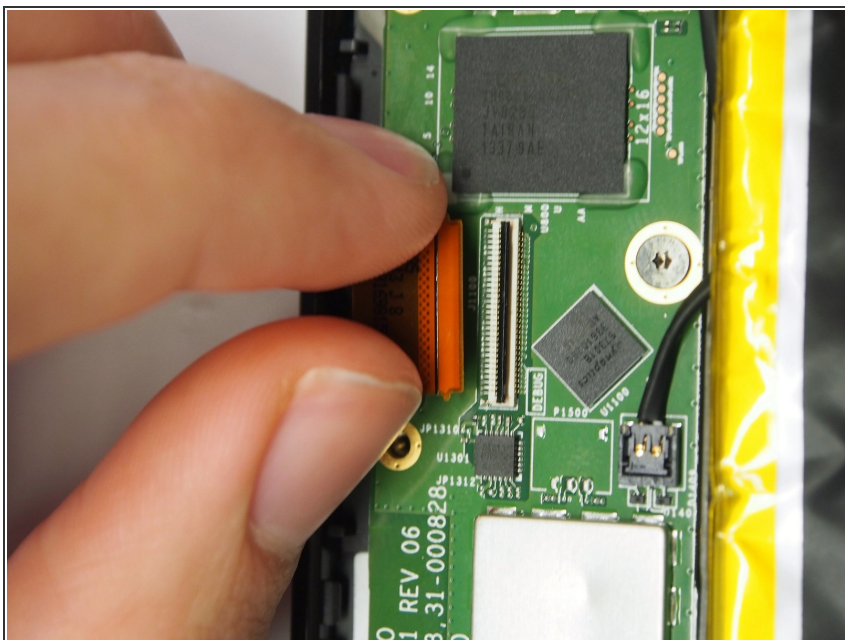
- Pull the ribbon out of the motherboard.

Step 5



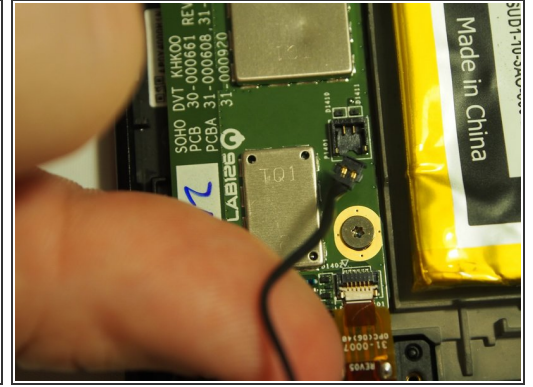
- Identify the ribbon located at the center left of the motherboard.
- Using the black spudger, lift up the black tab holding it in place.

Step 6



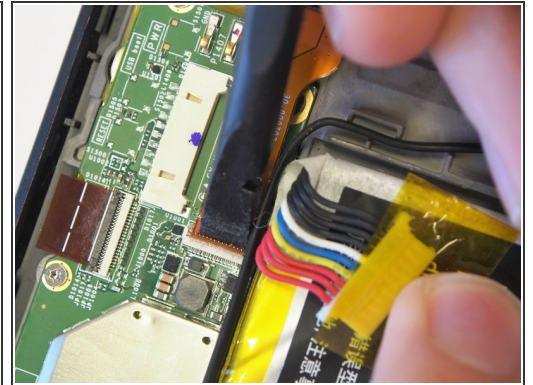
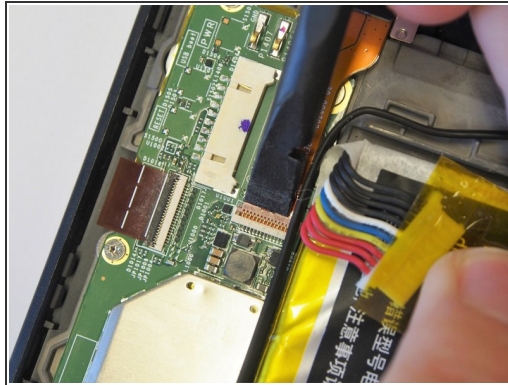
- Pull the ribbon out of the motherboard.

Step 7



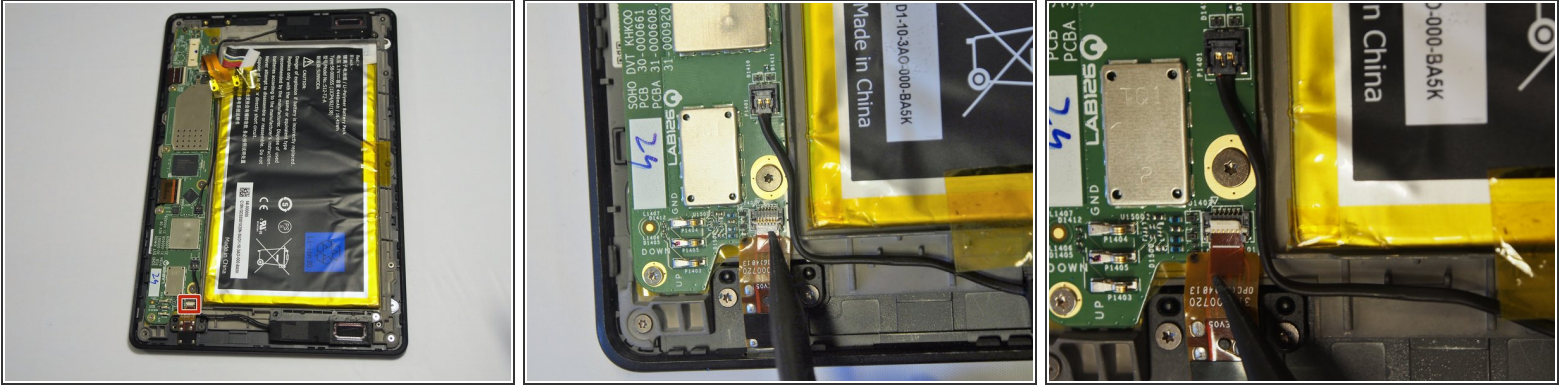
- Identify the 2 black contacts for the speakers.
- Pull straight up near the connection point and the wire will come disconnect easily.

Step 8



- Identify the ribbon for the USB port at the top of the motherboard.
- Pull up the gold tab holding it in place with the nylon spudger.
- Pull out the ribbon from the motherboard.

Step 9



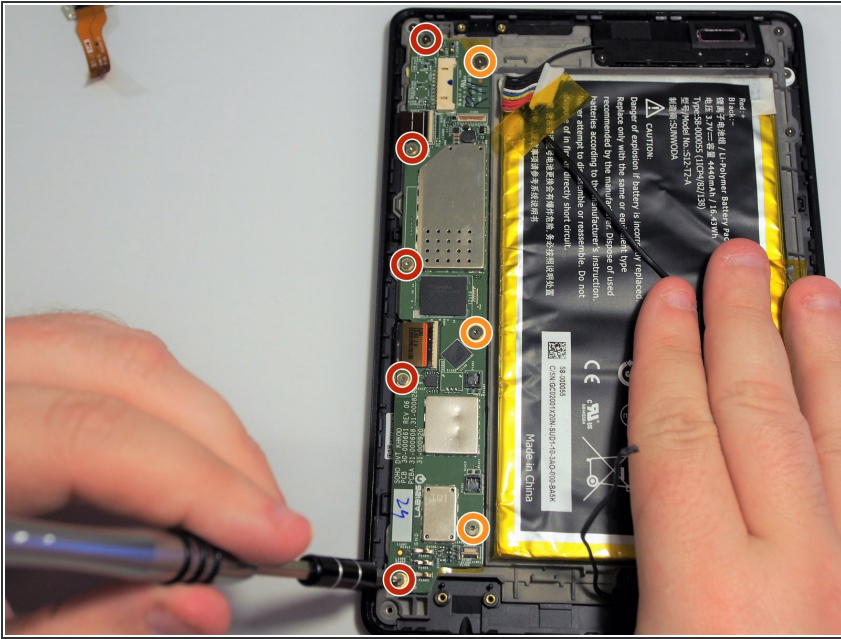
- Identify the ribbon at the bottom of the motherboard for the headphone jack.
- Using the nylon spudger, lift up the white tab holding the ribbon in place.

Step 10



- Pull out the ribbon from the motherboard.

Step 11



- Remove the screws holding the motherboard in place.
- There are (5) 3mm T4 Torx screws along the outer edge.
- Additionally, remove (3) 2mm T4 Torx screws along the edge near the battery.

Step 12



- Using the nylon spudger, gently pull up on the motherboard and pull it out of the tablet. The motherboard should now be disconnected completely.

To reassemble your device, follow these instructions in reverse order.

This document was generated on 2019-09-21 05:15:00 AM (MST).

