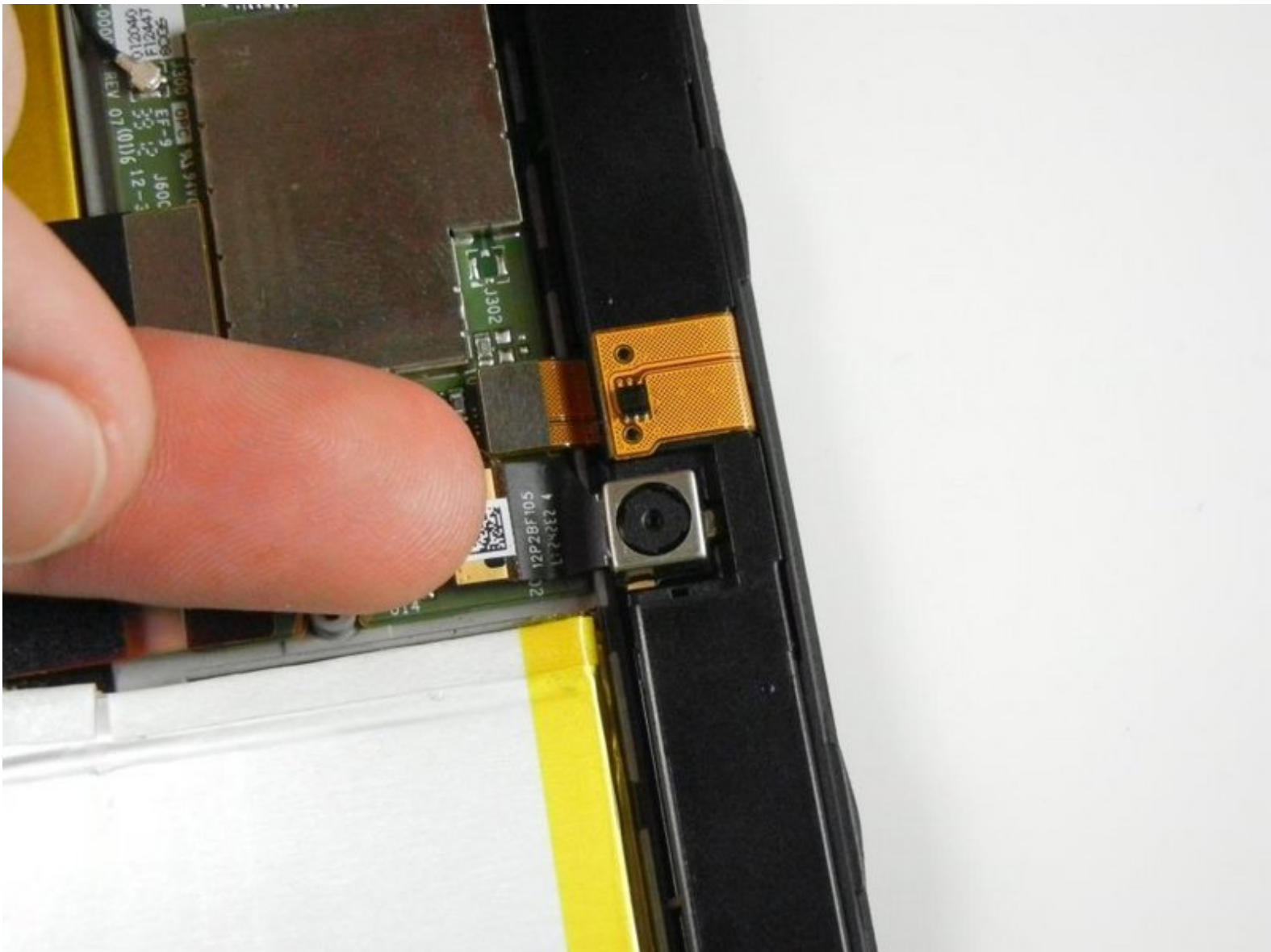




Kindle Fire HD 8.9" Camera Replacement

This guide demonstrates how to install the camera found on the Kindle fire HD.

Written By: Ted Park





TOOLS:

- [Phillips #000 Screwdriver](#) (1)
- [iFixit Opening Tools](#) (1)



PARTS:

- [Kindle Fire HD 8.9" Wi-Fi Front Facing Camera](#) (1)
- [Kindle Fire HD 8.9" Camera Bezel Assembly](#) (1)
- [Kindle Fire HD 8.9" Camera Daughterboard](#) (1)

Step 1 — Screen



- Remove the SIM card tray (if present in your model).
- Insert a large plastic opening tool next to the Kindle's headphone jack.
 - ⓘ Make sure the notch on the plastic opening tool is facing the back of the Kindle.
- Move the plastic opening tool evenly around the Kindle, separating the two halves.

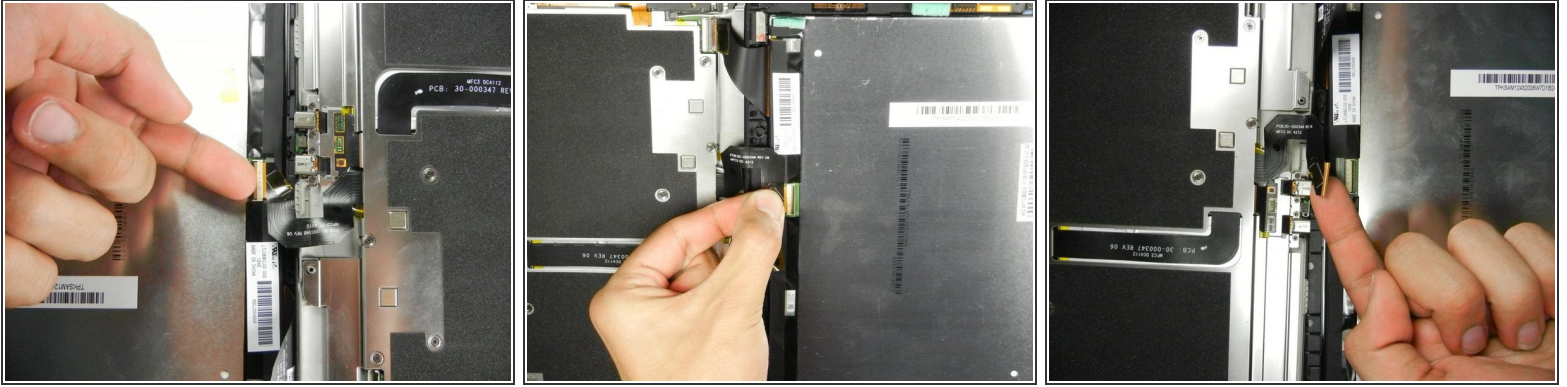
⚠ Be careful not to completely separate the rear cover. There are two delicate flex cables that connect the display assembly to the motherboard.

Step 2



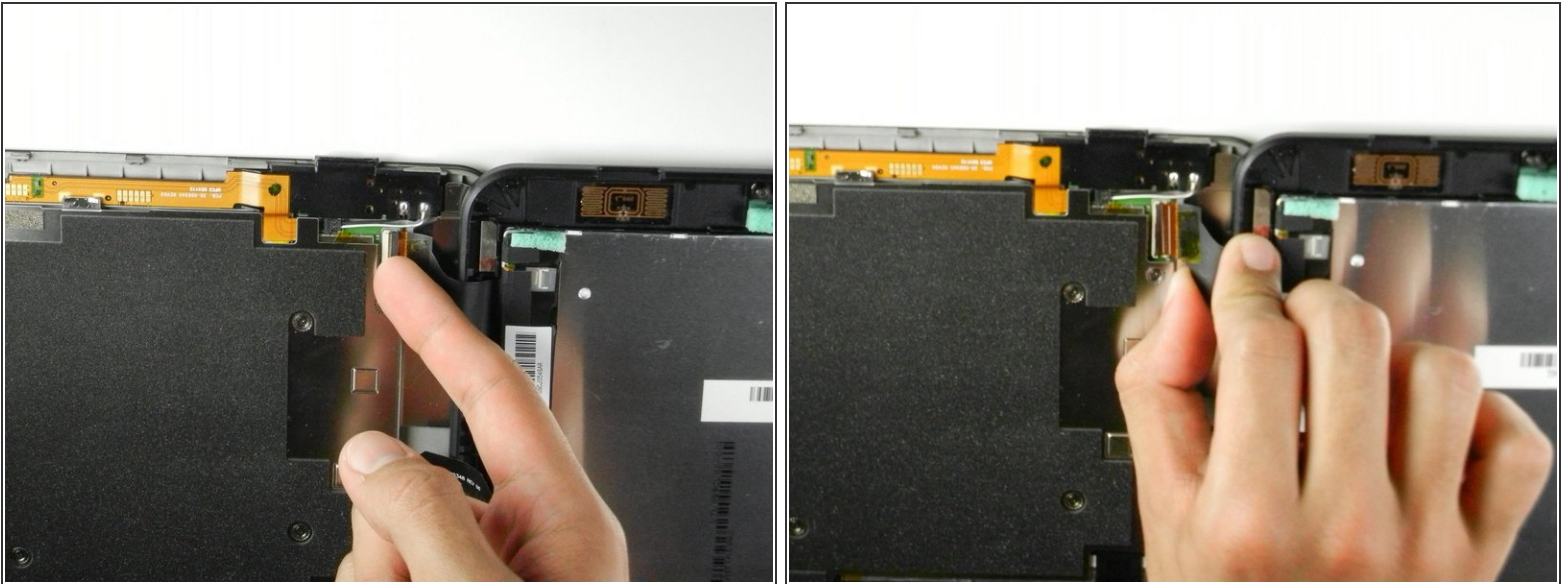
- Set the Kindle down on the rear case.
- Holding the display assembly near the camera, carefully open the display assembly up to about 90 degrees from the rear case.
- ⚠ These images show the Kindle laying flat. In order to prevent damage to the flex cables, keep the Kindle open at 90 degrees while disconnecting the display assembly.

Step 3



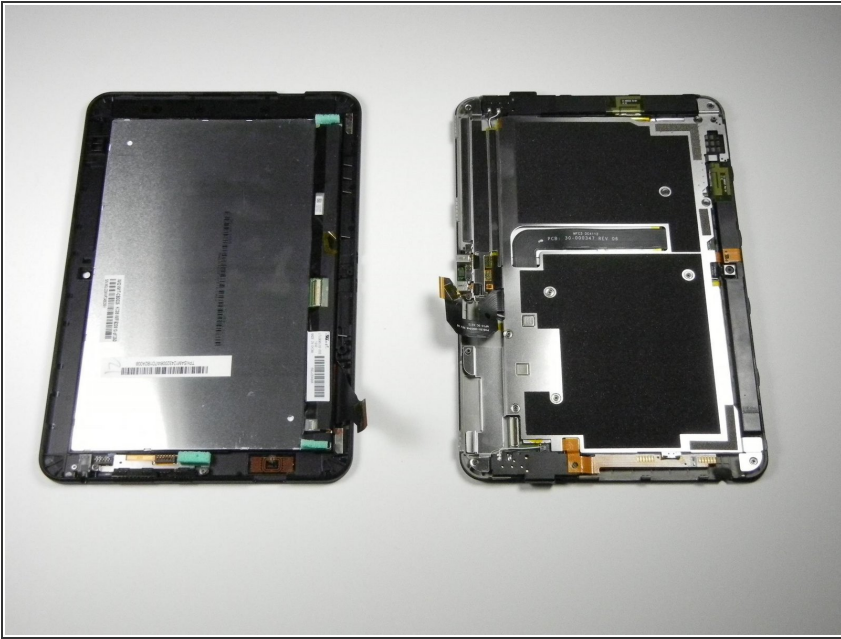
- Lift the retaining flap on the ZIF connector of the upper flex cable.
 - Gently pull the cable out of its socket.
- ⚠ This flex cable is delicate. Be careful not to crease or bend it while working.

Step 4



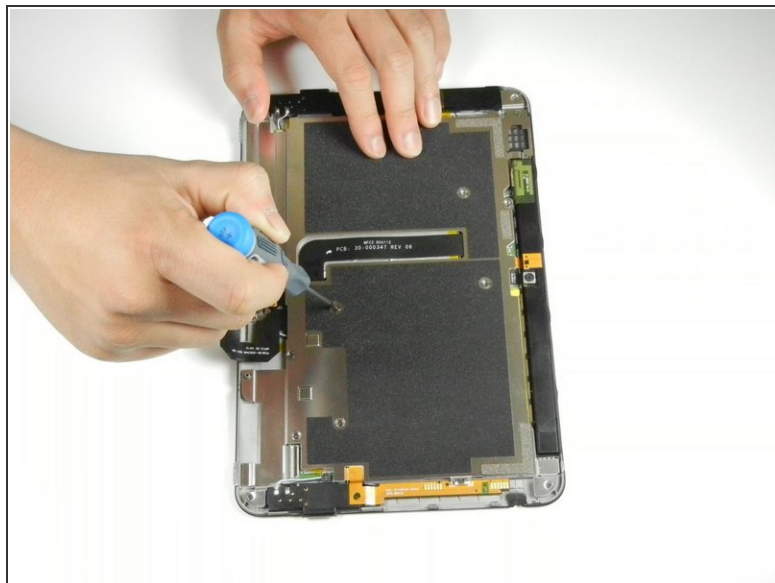
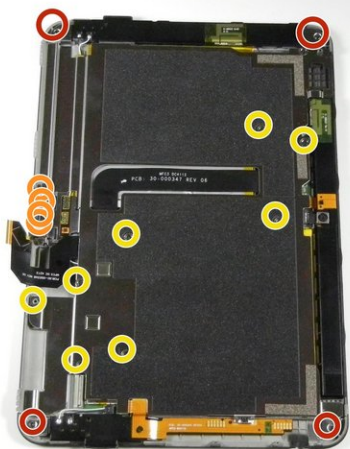
- Lift the retaining flap on the ZIF connector of the lower flex cable.
 - Gently pull the flex cable from its socket.
- ⚠ This flex cable is delicate. Be careful not to crease or bend it while working.

Step 5



- Separate the display assembly from the rest of the device.
- ★ When reassembling the device, align the two halves of the case before connecting the flex cables.

Step 6 — Inner Metal Casing



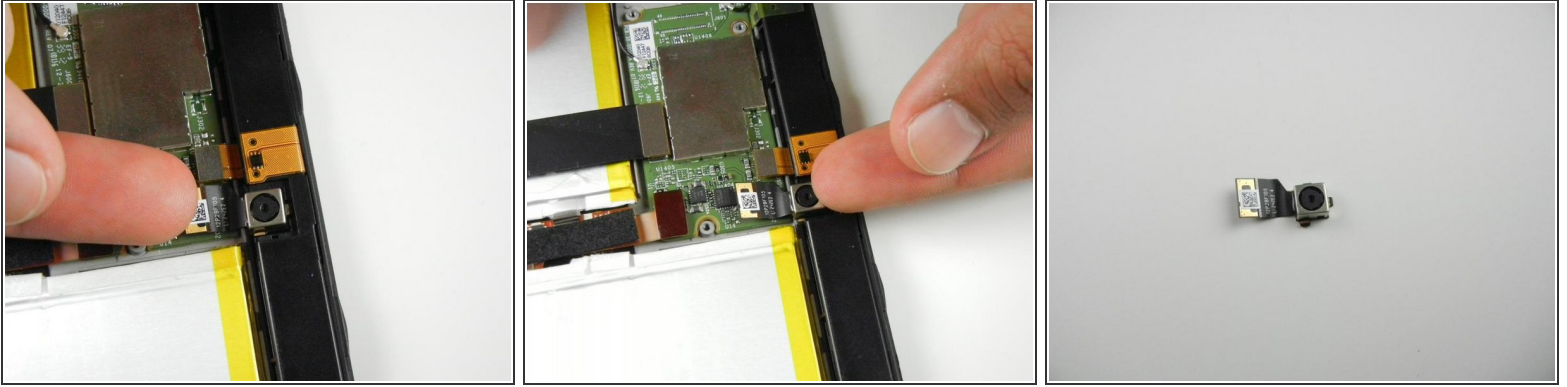
- Remove the following sixteen screws from the metal midframe on the rear of the device:
 - One 3 mm Phillips screw from each corner
 - Four 3 mm Phillips screws surrounding the ports
 - Eight 3 mm Phillips screws from the body of the midframe

Step 7



- Carefully remove the metal midframe.

Step 8 — Camera



- After taking off the metal casing, locate the camera.
 - Use your index finger to carefully lift up the silver clip located just under the camera until you notice the obvious click when it comes loose.
 - After you snap up the silver clip, move your finger to the opposite side so that you are now pointing into the Kindle. Finally push the camera outwards towards the edge of the device.
 - Once the camera piece is taken out, this is what you should end up with.
- ⚠ Make sure to keep in a safe area to avoid any damage to the lens and camera itself.

To reassemble your device, follow these instructions in reverse order.