



# Kindle Fire HD 8.9" Charger & Micro HDMI Input Replacement

This guide demonstrates how to remove the charger and micro HDMI input from your Kindle Fire HD 8.9".

Written By: Joel Wilcox





## TOOLS:

- [iFixit Opening Tools](#) (1)



## PARTS:

- [Kindle Fire HD 8.9" Wi-Fi Charging Assembly](#) (1)

## Step 1 — Screen



- Remove the SIM card tray (if present in your model).
- Insert a large plastic opening tool next to the Kindle's headphone jack.
  - ❗ Make sure the notch on the plastic opening tool is facing the back of the Kindle.
- Move the plastic opening tool evenly around the Kindle, separating the two halves.

⚠ Be careful not to completely separate the rear cover. There are two delicate flex cables that connect the display assembly to the motherboard.

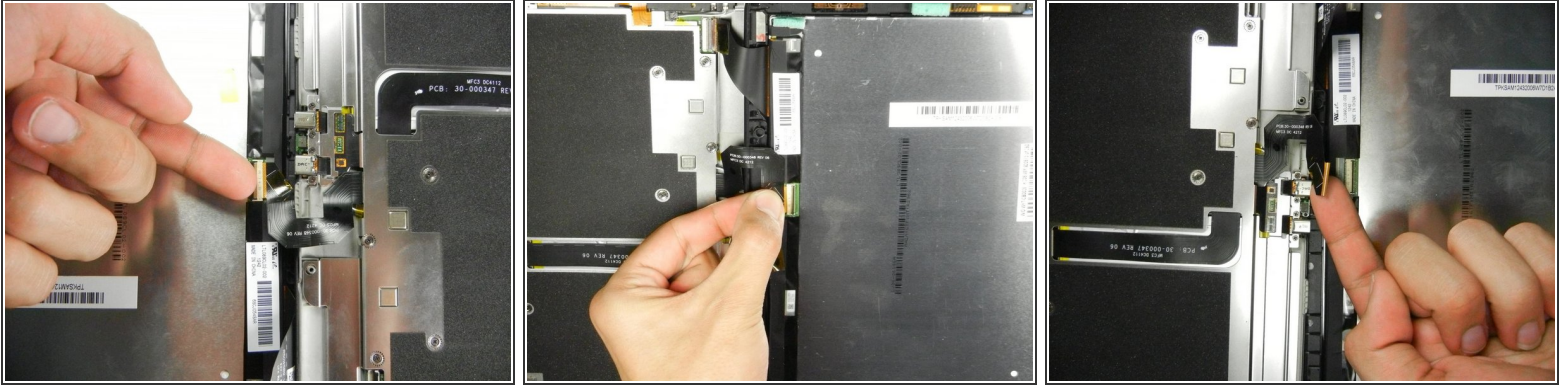
## Step 2



- Set the Kindle down on the rear case.
- Holding the display assembly near the camera, carefully open the display assembly up to about 90 degrees from the rear case.
- ⚠ These images show the Kindle laying flat. In order to prevent damage to the flex cables, keep the Kindle open at 90 degrees while disconnecting the display assembly.

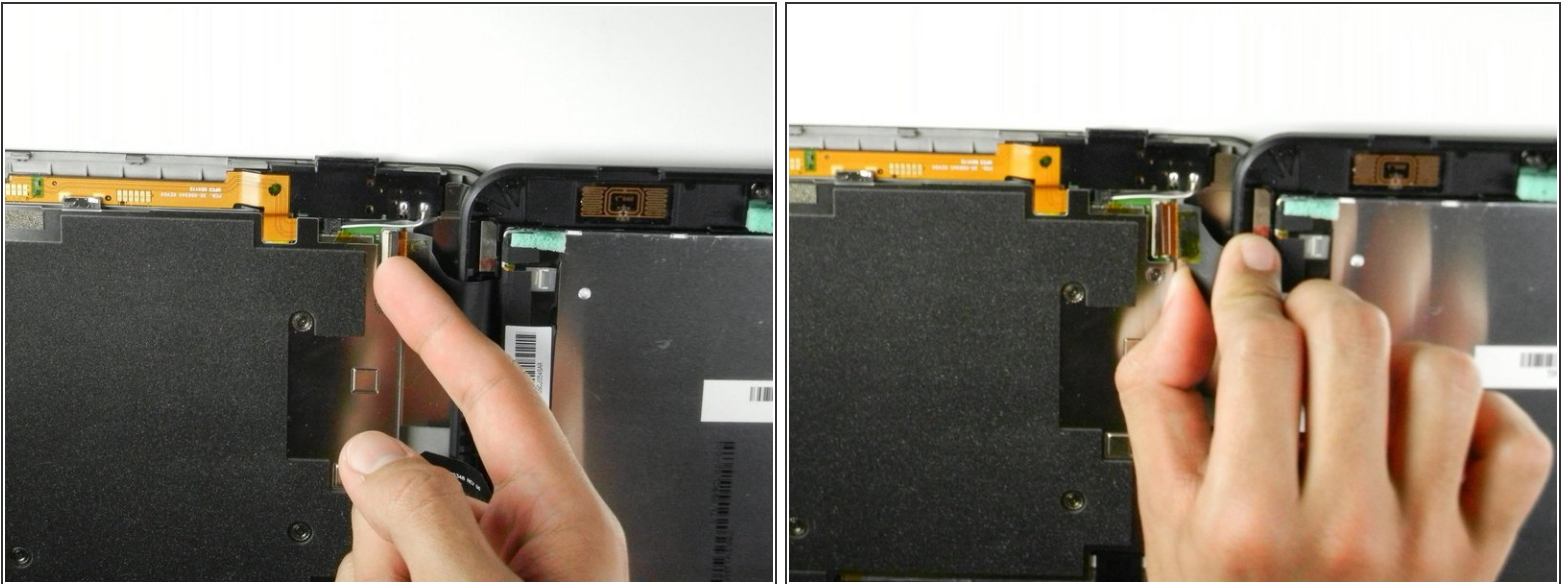


### Step 3



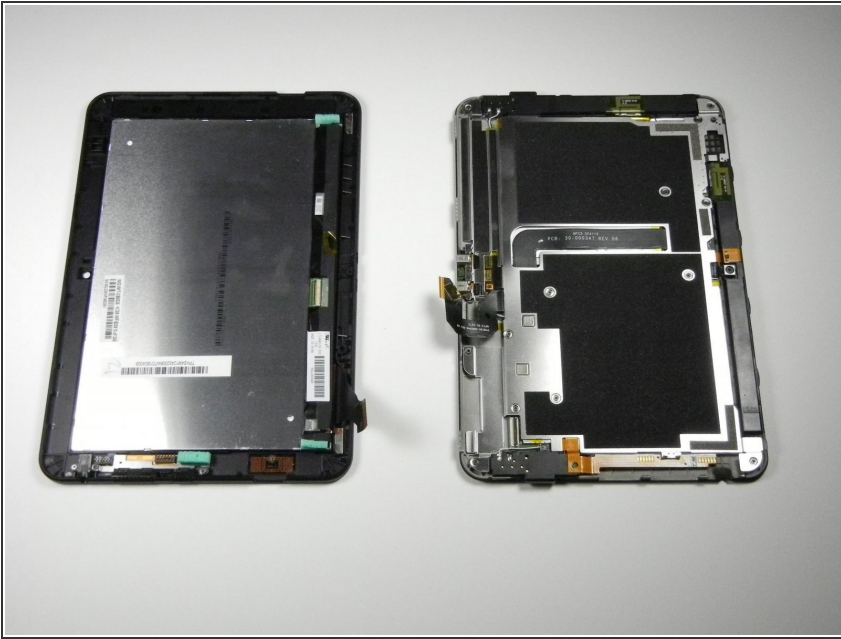
- Lift the retaining flap on the ZIF connector of the upper flex cable.
  - Gently pull the cable out of its socket.
- ⚠ This flex cable is delicate. Be careful not to crease or bend it while working.

### Step 4



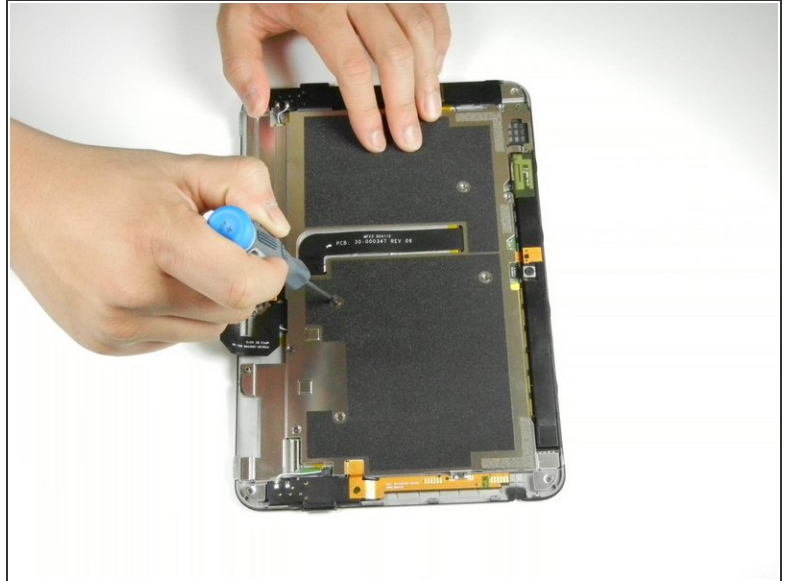
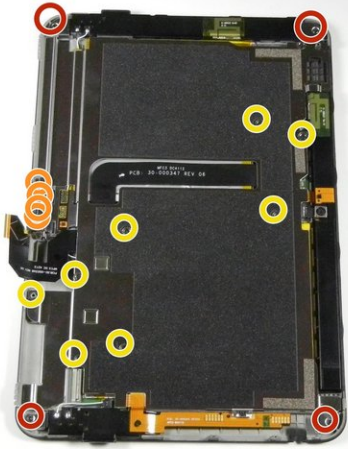
- Lift the retaining flap on the ZIF connector of the lower flex cable.
  - Gently pull the flex cable from its socket.
- ⚠ This flex cable is delicate. Be careful not to crease or bend it while working.

## Step 5



- Separate the display assembly from the rest of the device.
- ★ When reassembling the device, align the two halves of the case before connecting the flex cables.

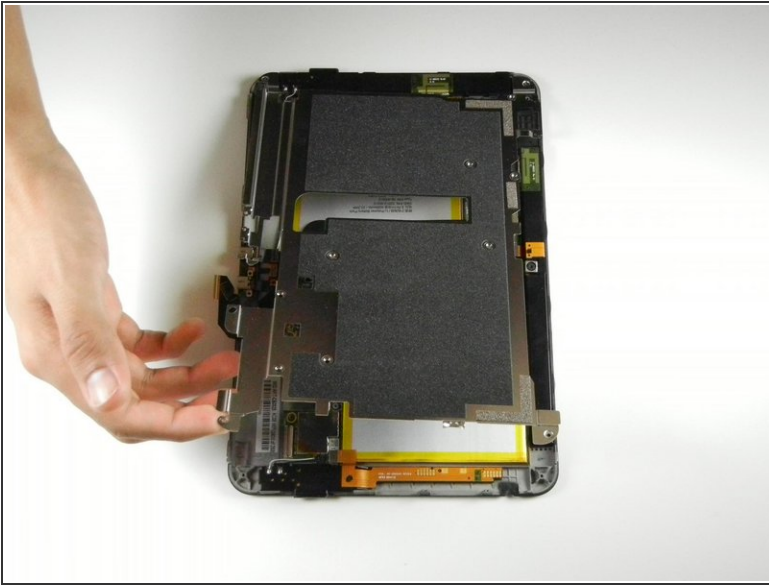
## Step 6 — Inner Metal Casing



- Remove the following sixteen screws from the metal midframe on the rear of the device:
  - One 3 mm Phillips screw from each corner
  - Four 3 mm Phillips screws surrounding the ports
  - Eight 3 mm Phillips screws from the body of the midframe

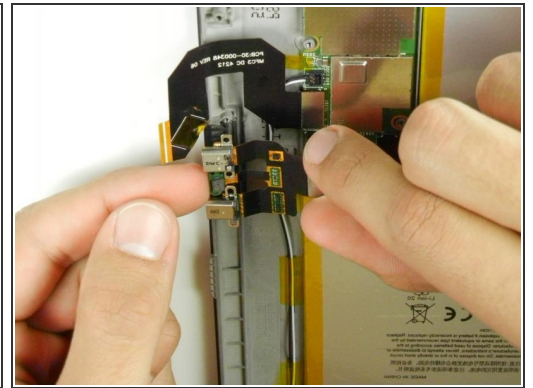
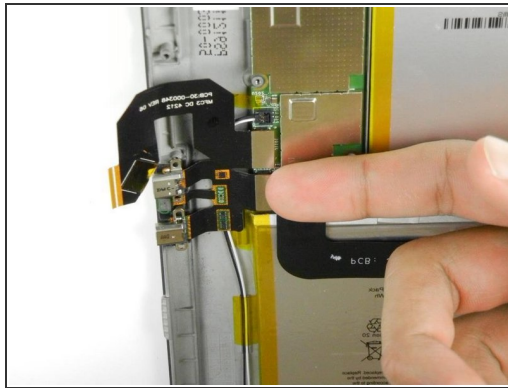
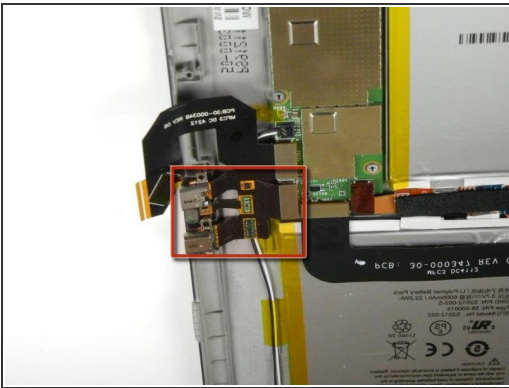


## Step 7



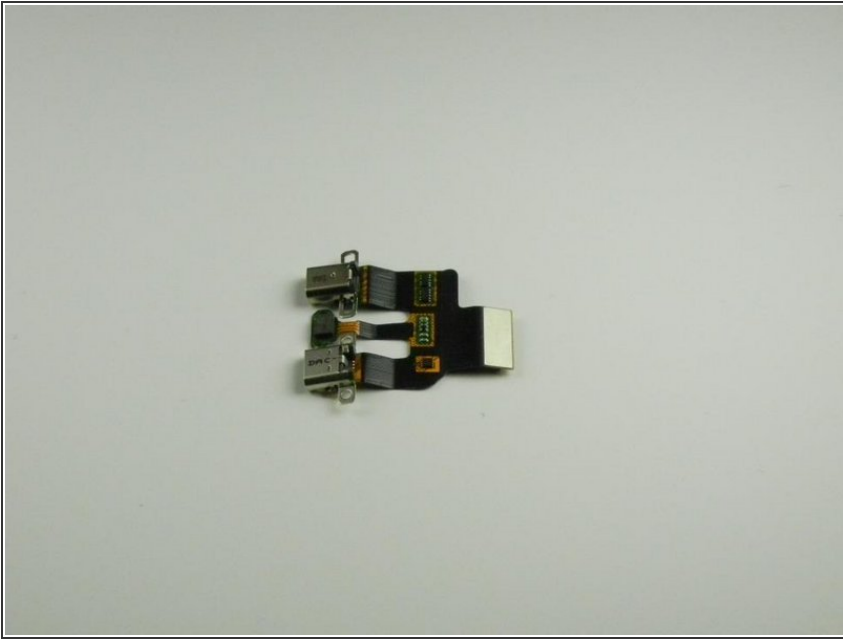
- Carefully remove the metal midframe.

## Step 8 — Charger & Micro HDMI Input



- Locate the charger and micro HDMI input located on the back side of your Kindle.
- Use your finger to gently apply pressure and push upward on the metal strip that faces the center of the Kindle.
- ⚠ Be careful to not bend the black portion that connects the two inputs when removing the metal strip.
- Lift the metal strip on both sides by using your fingers.

## Step 9



**i** You have now successfully removed the charger and micro HDMI input.

To reassemble your device, follow these instructions in reverse order.