



Kindle Fire HD 8.9" Headphone Input Replacement

Installation Guide for the Headphone Input of the Kindle Fire HD 8.9".

Written By: Christian Odegard



INTRODUCTION

This guide demonstrates how to remove and install a headphone input for the Kindle Fire HD 8.9".



TOOLS:

- [Phillips #0 Screwdriver](#) (1)
- [iFixit Opening Tools](#) (1)



PARTS:

- [Kindle Fire HD 8.9" Wi-Fi Headphone Jack](#) (1)

Step 1 — Screen



- Remove the SIM card tray (if present in your model).
- Insert a large plastic opening tool next to the Kindle's headphone jack.
 - ⓘ Make sure the notch on the plastic opening tool is facing the back of the Kindle.
- Move the plastic opening tool evenly around the Kindle, separating the two halves.

⚠ Be careful not to completely separate the rear cover. There are two delicate flex cables that connect the display assembly to the motherboard.

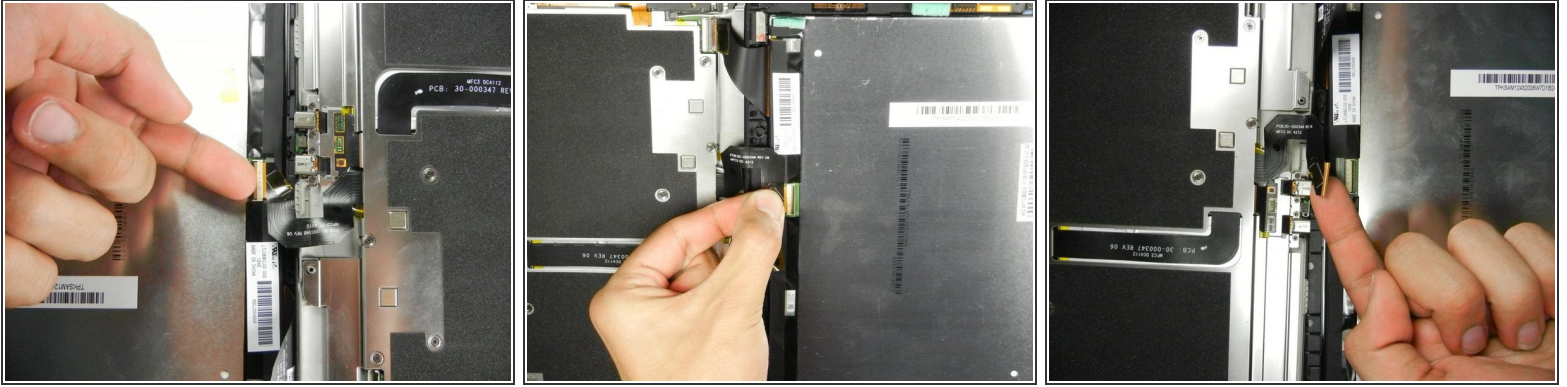
Step 2



- Set the Kindle down on the rear case.
- Holding the display assembly near the camera, carefully open the display assembly up to about 90 degrees from the rear case.

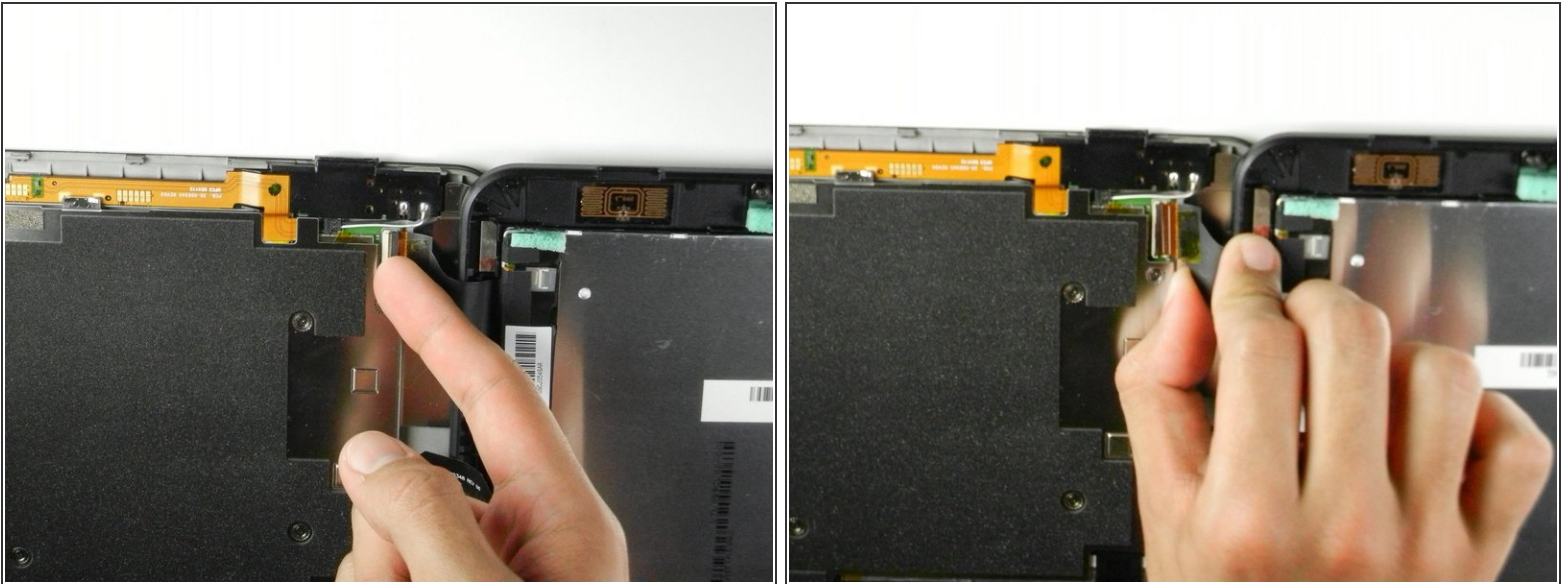
⚠ These images show the Kindle laying flat. In order to prevent damage to the flex cables, keep the Kindle open at 90 degrees while disconnecting the display assembly.

Step 3



- Lift the retaining flap on the ZIF connector of the upper flex cable.
 - Gently pull the cable out of its socket.
- ⚠ This flex cable is delicate. Be careful not to crease or bend it while working.

Step 4



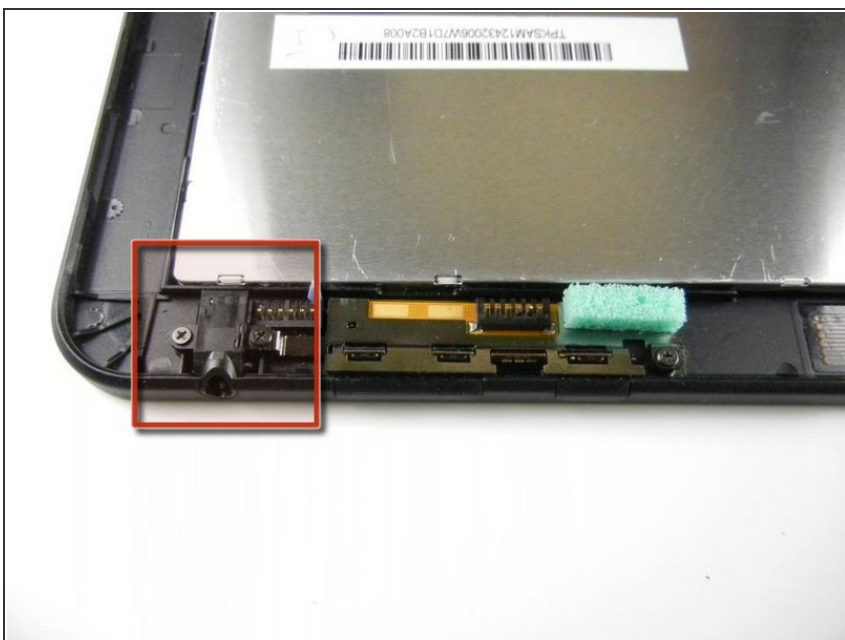
- Lift the retaining flap on the ZIF connector of the lower flex cable.
 - Gently pull the flex cable from its socket.
- ⚠ This flex cable is delicate. Be careful not to crease or bend it while working.

Step 5



- Separate the display assembly from the rest of the device.
- ★ When reassembling the device, align the two halves of the case before connecting the flex cables.

Step 6 — Headphone Input



- Locate the headphone input on the case of the device.

Step 7



- Unscrew the three 2.7mm Phillips #0 screws on the left and right sides of the headphone input.

Step 8



- Gently grab the metal casing that covers the headphone input, being careful not to force or break anything, and lift upward.
- ⚠ This metal casing also holds in the power and volume buttons. Be careful not to lose the buttons while working with the headphone input.
- The power and volume buttons are boxed in the first picture.

Step 9



- Pull the headphone input straight up out of its spot gently.

To reassemble your device, follow these instructions in reverse order.