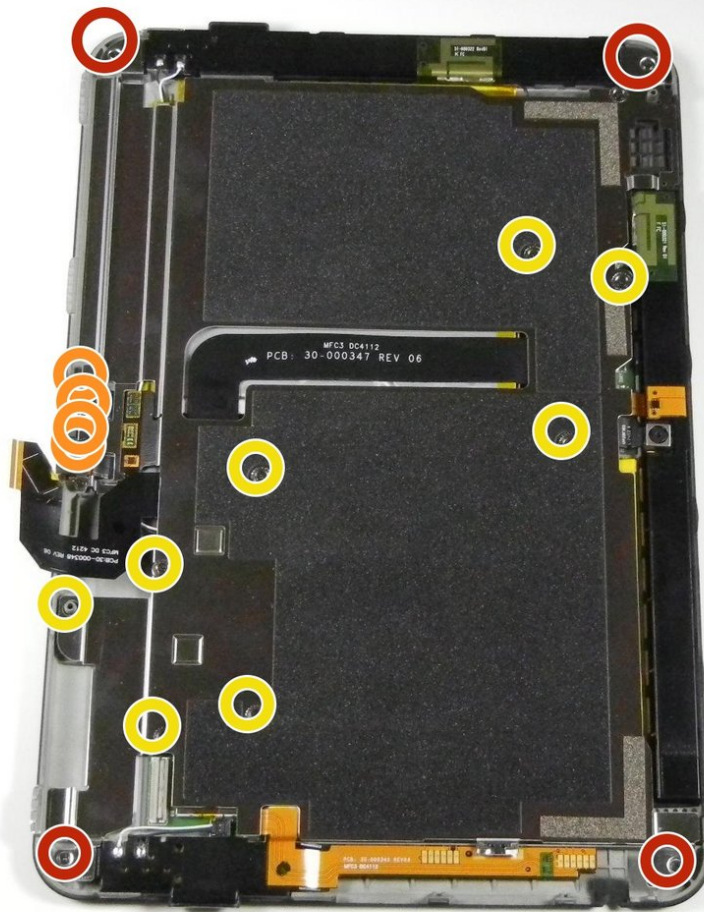




Kindle Fire HD 8.9" Midframe Replacement

Replace the metal midframe in your Kindle Fire HD 8.9".

Written By: Ted Park



INTRODUCTION

Use this guide to replace the metal midframe on the interior of the Kindle Fire HD 8.9". Removing this metal casing is a prerequisite for replacing most of the Kindle Fire HD's internal components.



TOOLS:

- [Phillips #00 Screwdriver](#) (1)
- [iFixit Opening Tools](#) (1)



PARTS:

- [Kindle Fire HD 8.9" Wi-Fi Heat Shield](#) (1)
- [Kindle Fire HD 8.9" Volume Button Flex Cable](#) (1)

Step 1 — Screen



- Remove the SIM card tray (if present in your model).
- Insert a large plastic opening tool next to the Kindle's headphone jack.
 - ⓘ Make sure the notch on the plastic opening tool is facing the back of the Kindle.
- Move the plastic opening tool evenly around the Kindle, separating the two halves.

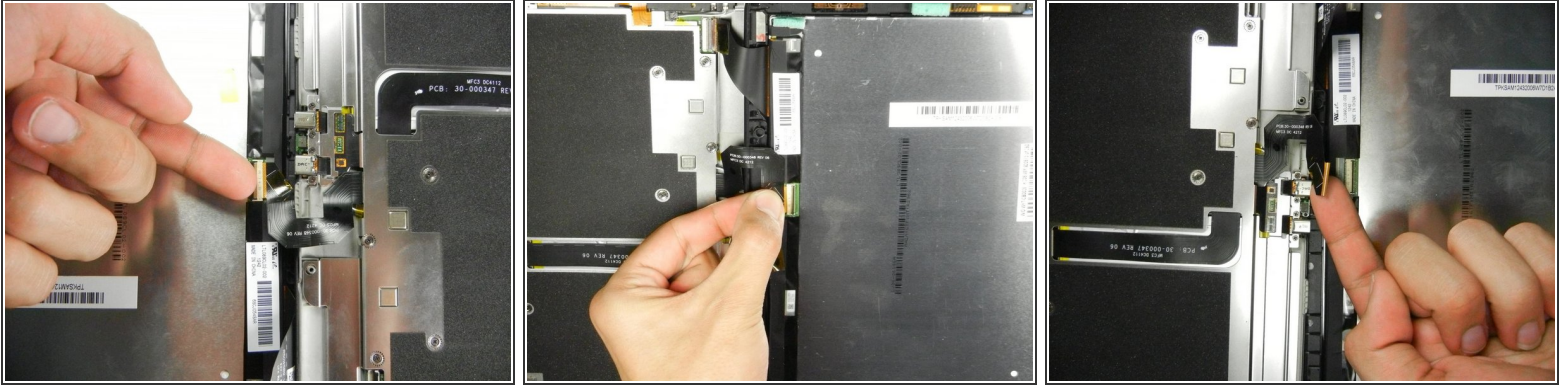
⚠ Be careful not to completely separate the rear cover. There are two delicate flex cables that connect the display assembly to the motherboard.

Step 2



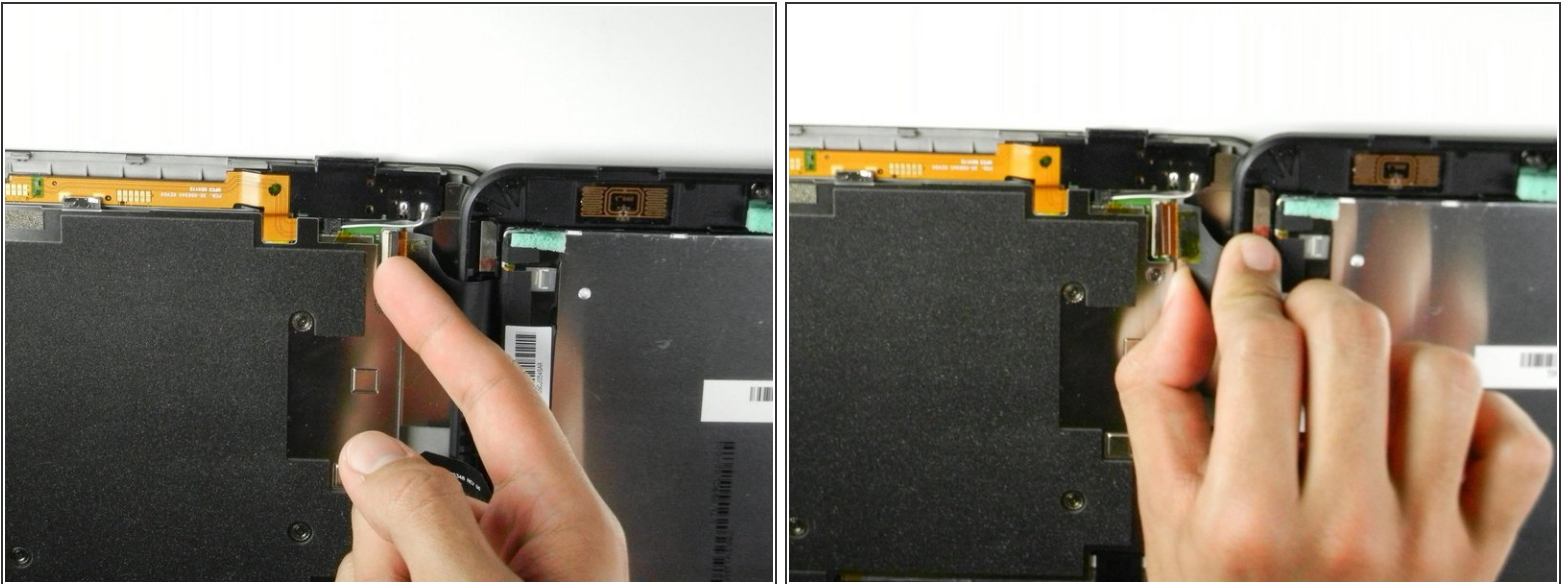
- Set the Kindle down on the rear case.
 - Holding the display assembly near the camera, carefully open the display assembly up to about 90 degrees from the rear case.
- ⚠ These images show the Kindle laying flat. In order to prevent damage to the flex cables, keep the Kindle open at 90 degrees while disconnecting the display assembly.

Step 3



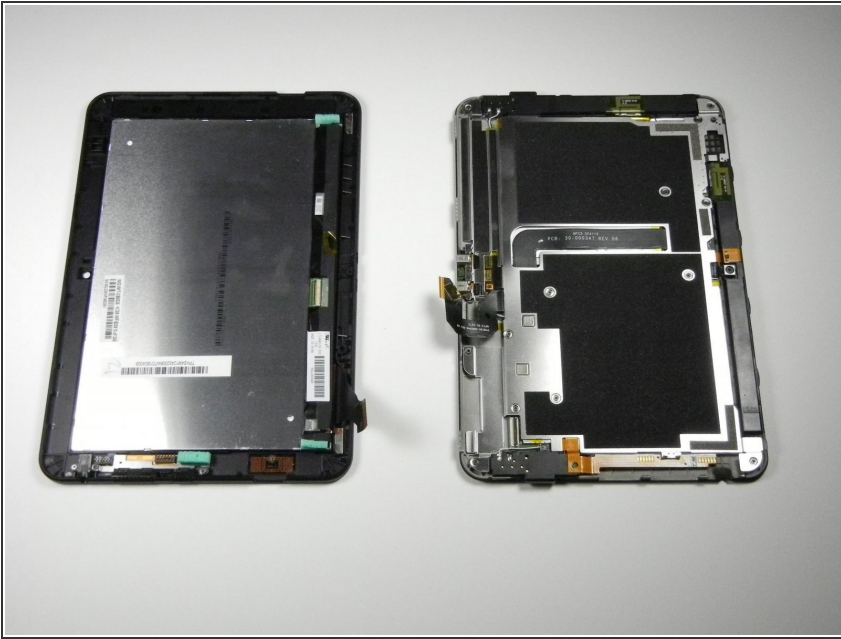
- Lift the retaining flap on the ZIF connector of the upper flex cable.
 - Gently pull the cable out of its socket.
- ⚠ This flex cable is delicate. Be careful not to crease or bend it while working.

Step 4



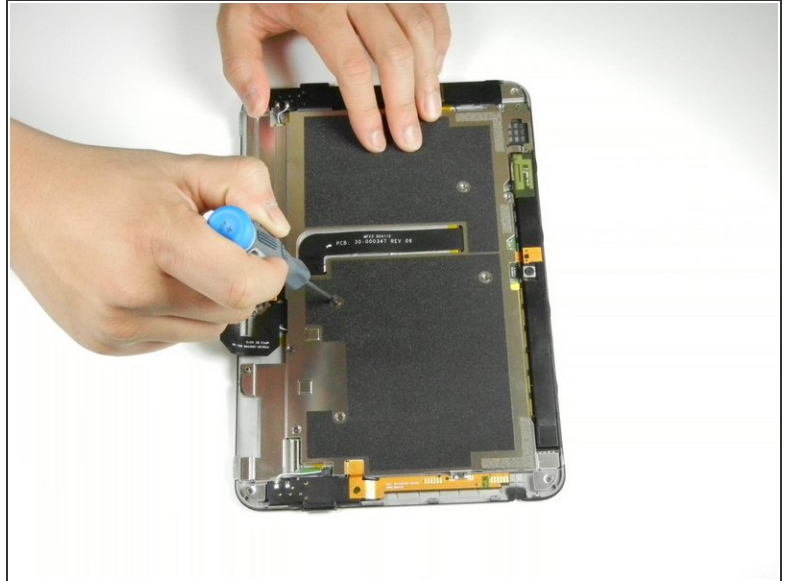
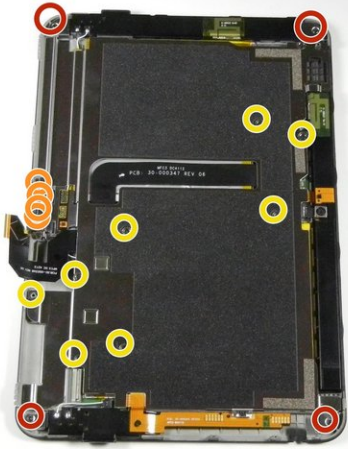
- Lift the retaining flap on the ZIF connector of the lower flex cable.
 - Gently pull the flex cable from its socket.
- ⚠ This flex cable is delicate. Be careful not to crease or bend it while working.

Step 5



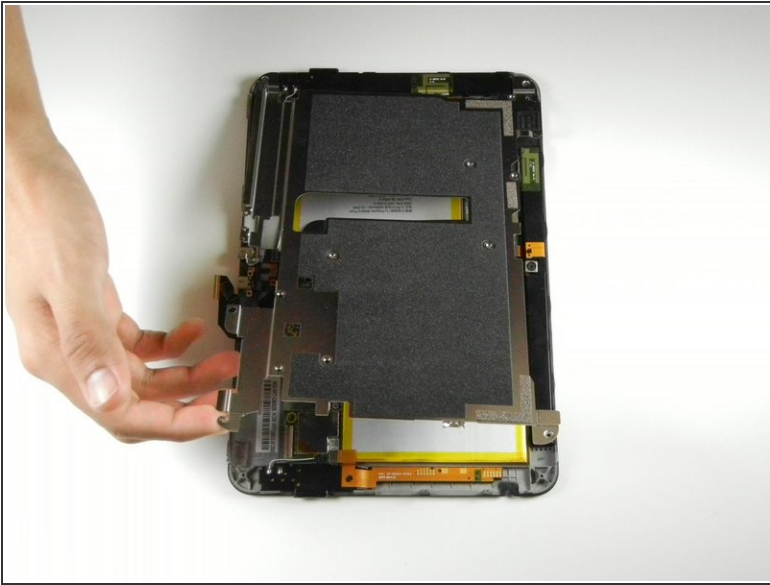
- Separate the display assembly from the rest of the device.
- ★ When reassembling the device, align the two halves of the case before connecting the flex cables.

Step 6 — Inner Metal Casing



- Remove the following sixteen screws from the metal midframe on the rear of the device:
 - One 3 mm Phillips screw from each corner
 - Four 3 mm Phillips screws surrounding the ports
 - Eight 3 mm Phillips screws from the body of the midframe

Step 7



- Carefully remove the metal midframe.

To reassemble your device, follow these instructions in reverse order.