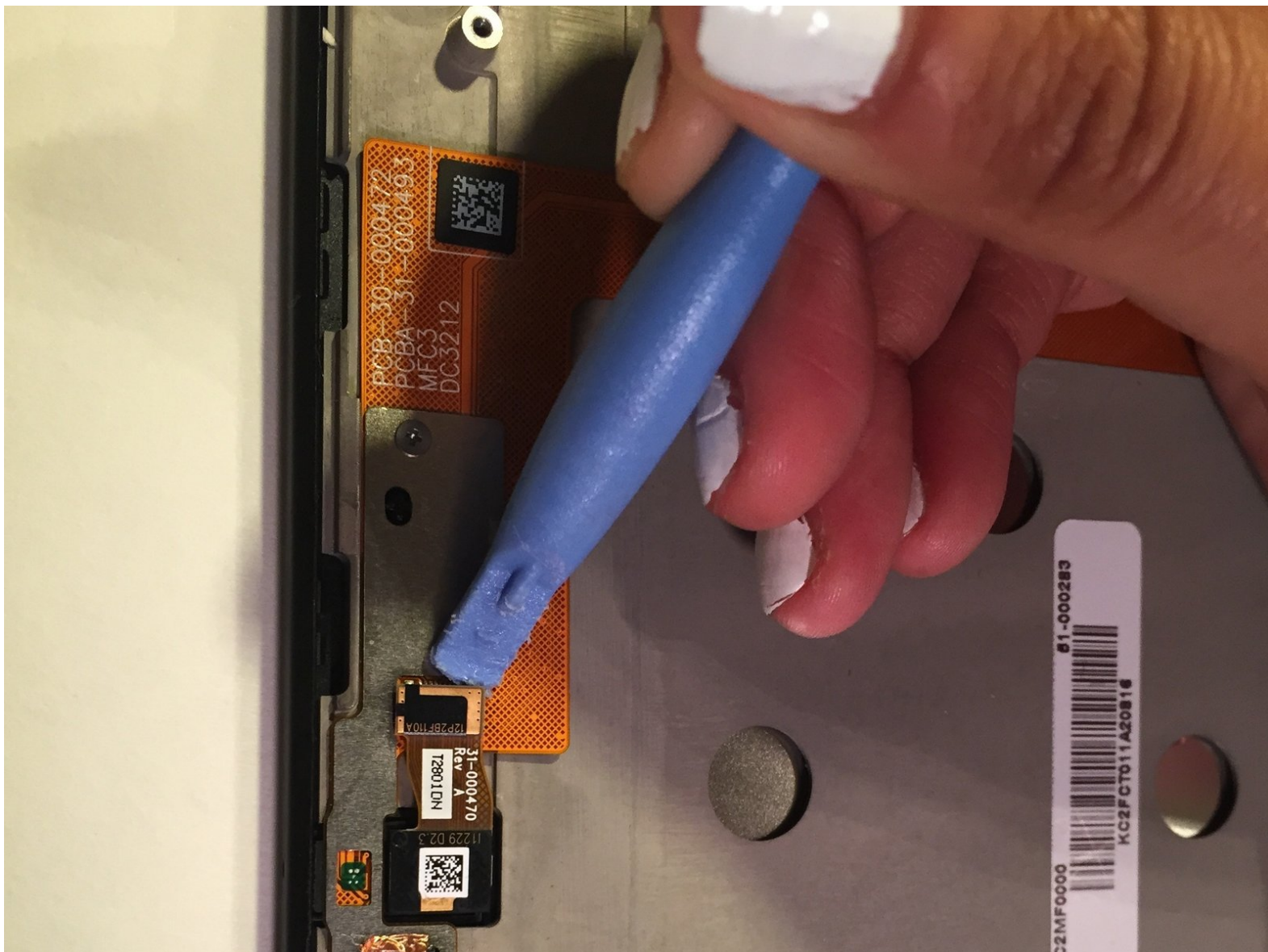




Kindle Fire HD Front Facing Camera Replacement

This guide will show you how to replace the front facing camera on your Kindle Fire.

Written By: Matthew Hodgdon





TOOLS:

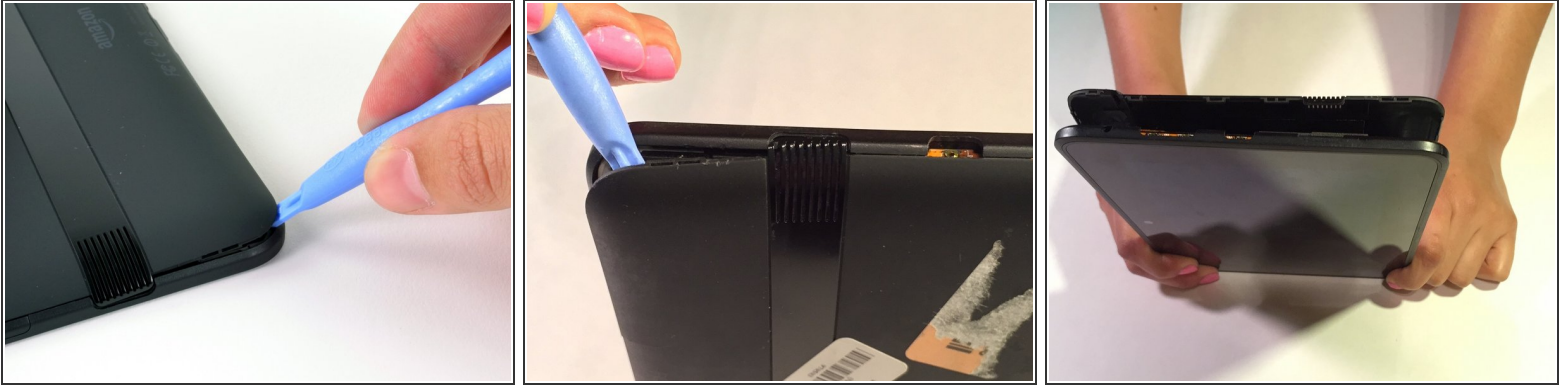
- [Phillips #00 Screwdriver](#) (1)
- [iFixit Opening Tools](#) (1)



PARTS:

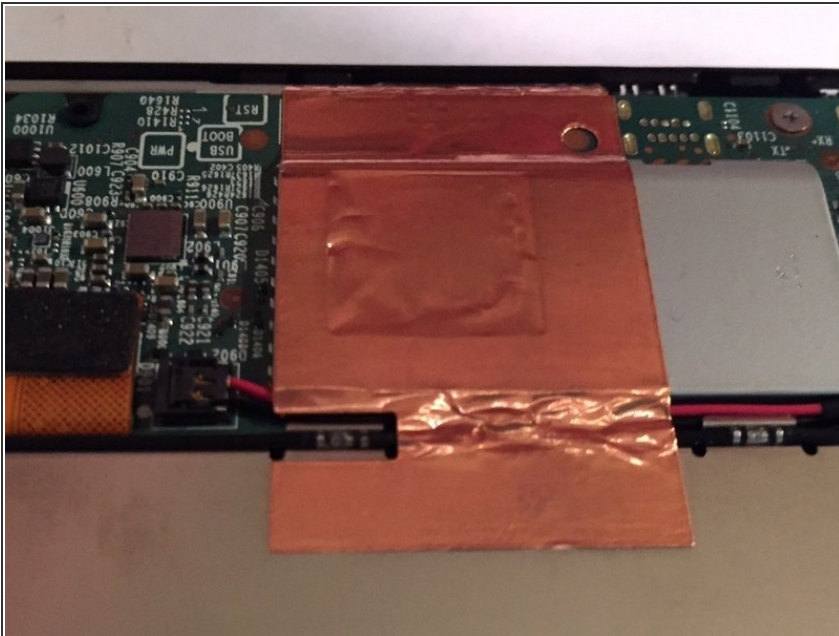
- [Kindle Fire HD 7" \(2012, 1st Gen\) Front Camera](#) (1)

Step 1 — Open the Kindle



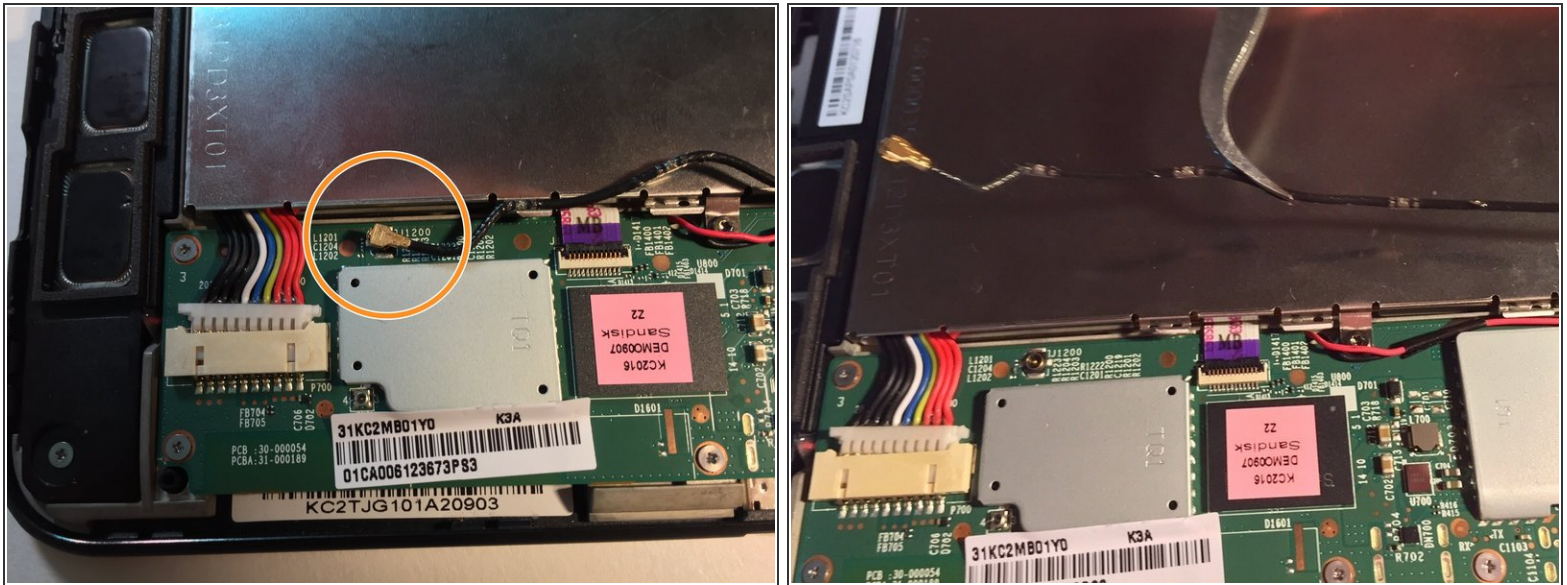
- Wedge a plastic opening tool into the lower right corner of the Kindle Fire.
 - Lift up until you hear a slight popping noise.
 - Repeat along the perimeter of the device to release the clips securing the case halves to each other. Remove the back cover.
- ⚠ The Kindle Fire could possibly have tape on the inside. Check for tape before removing the back cover.

Step 2



- If your device has copper tape attached to the battery, carefully peel it off the battery.

Step 3



- Locate the antenna cable connector which is easier to find if you look for the gold tipped black wire that surrounds the battery.
- Lift and pull up the power connector cable that surrounds the battery

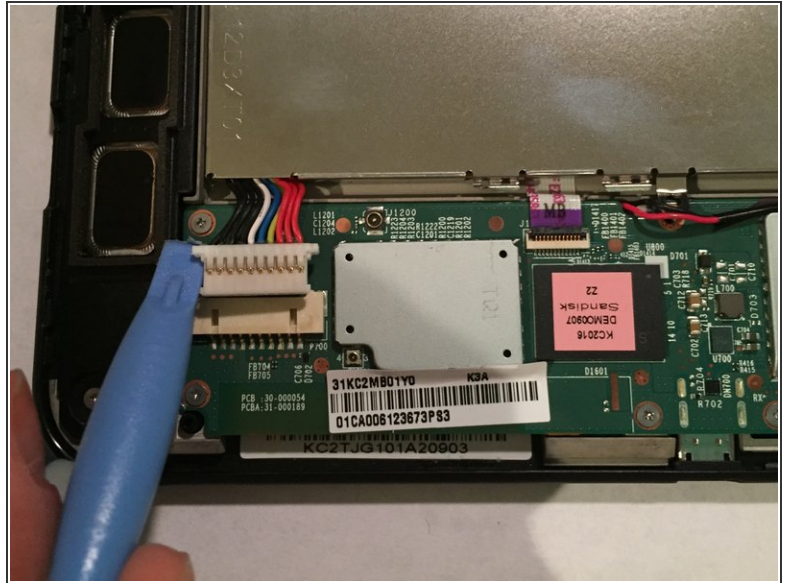
Step 4 — Remove Screws



- Locate and unscrew the four 3 mm screws using the Phillips #00 screwdriver.
- Unscrew the one T5 Torx screw using the special T5 Torx screwdriver head.
- ⓘ The 2 mm T5 Torx screw is located on the motherboard near the antenna clip.
- ⓘ If you aren't equipped with the T5 Torx screwdriver, you could try using your fingers, although it will be very difficult to remove it.

This document was generated on 2019-09-21 05:12:40 AM (MST).

Step 5 — Detach Cable



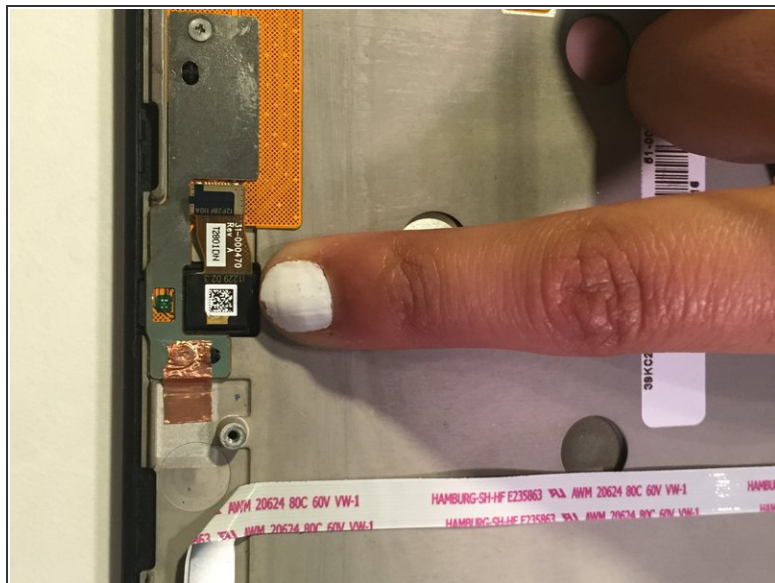
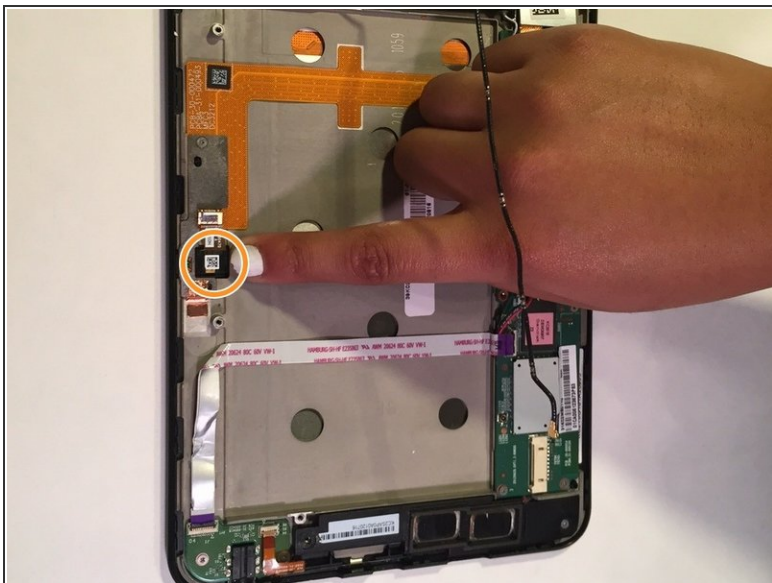
- Detach the plastic piece that connects the wires to the motherboard using the plastic opening tool.

Step 6



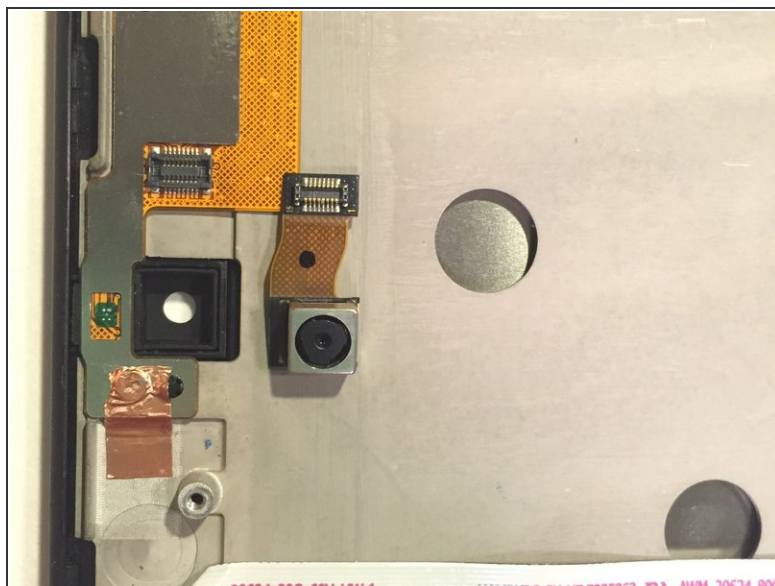
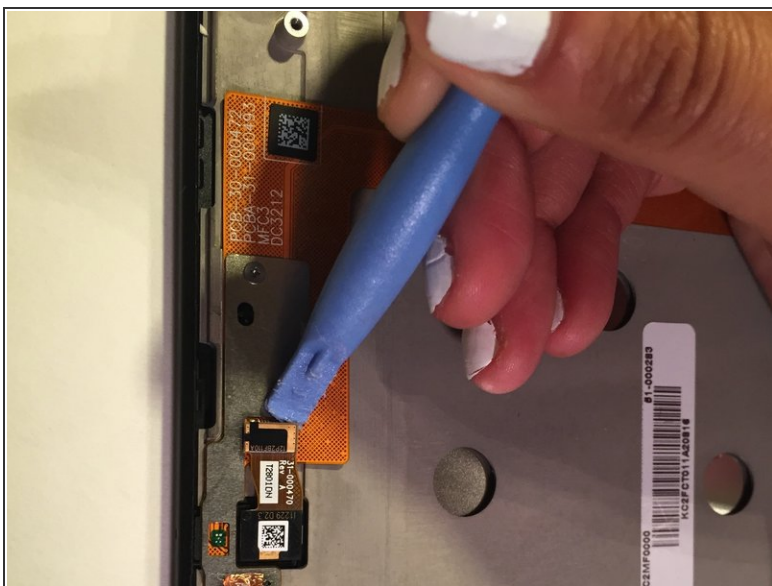
- Lift the battery out of the device with your finger or the plastic opening tool.

Step 7 — Front Facing Camera



- After removing the battery, locate the camera.

Step 8



- Use the plastic opening tool to carefully lift the camera up.
- Now you may lift the camera out of your device.

To reassemble your device, follow these instructions in reverse order.