



Kindle Paperwhite 1st Generation Screen Replacement

Use this guide to install a new screen into your Kindle Paperwhite.

Written By: Anthony Nahal





TOOLS:

- [Phillips #2 Screwdriver](#) (1)
- [iFixit Opening Tools](#) (1)
- [Spudger](#) (1)
- [iOpener Kit](#) (1)



PARTS:

- [Kindle Paperwhite \(1st Gen\) Display Assembly](#) (1)
- [Amazon Kindle Paperwhite Display Touch Panel](#) (1)

Step 1 — Case



- Using a spudger or plastic opening tool, gently pry the bezel from the screen. It is easier to start in the corners and work your way around the bezel.

⚠ Do not insert the spudger too far under the bezel; it could easily damage the screen.

Step 2



- Remove the eleven 3.0 mm Phillips screws surrounding the midframe.

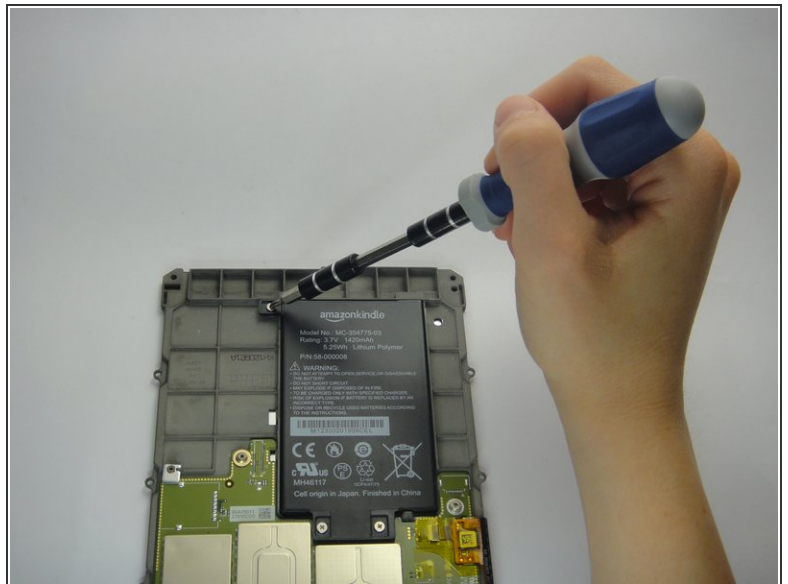
ⓘ At the top of the display, a strip of black tape covers one screw.

Step 3



- Lift the midframe out of the case.
- ❗ If the midframe is stuck, slide it to the left first, and then lift it out.

Step 4 — Battery



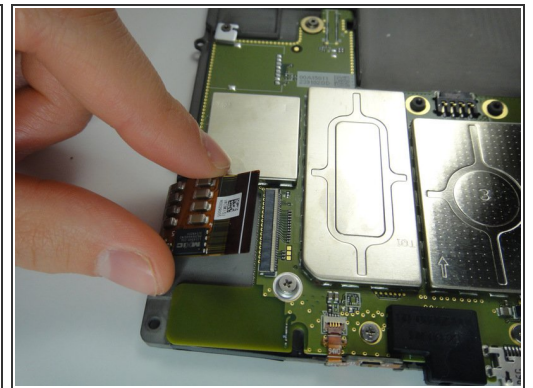
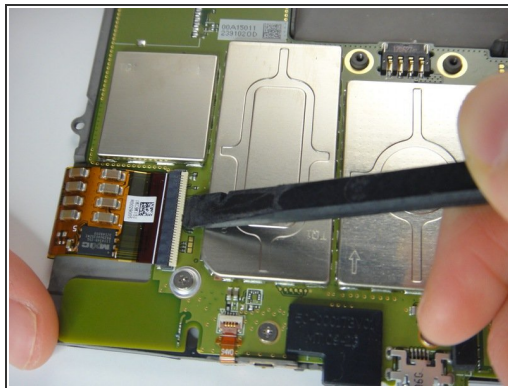
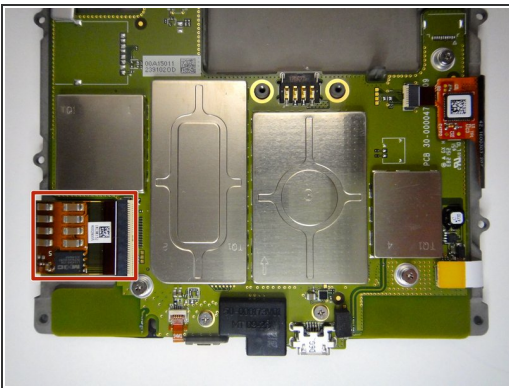
- Turn over the midframe to locate the battery.
- Remove the three Phillips 3.0 mm screws securing the battery to the midframe.

Step 5



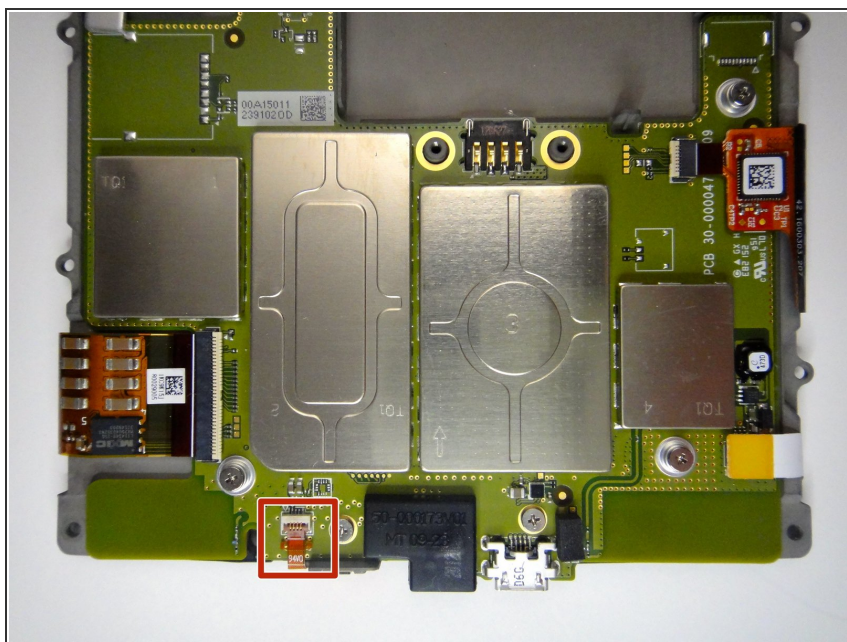
- Gently lift the battery from the bottom, and slide it out of the midframe.

Step 6 — Screen



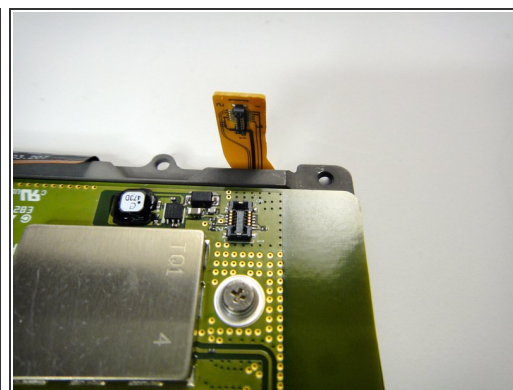
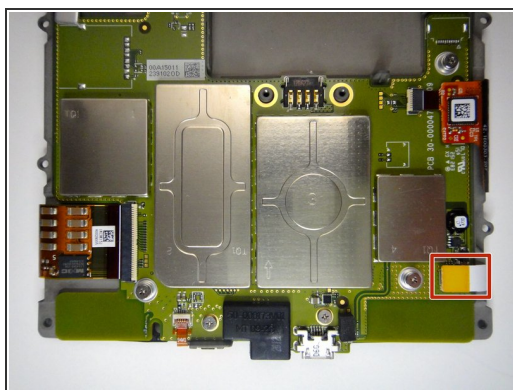
- Use a spudger to lift up the retaining flap on the large ZIF connector at the bottom left of the motherboard.
- Gently pull the large ribbon cable out of the ZIF connector.

Step 7



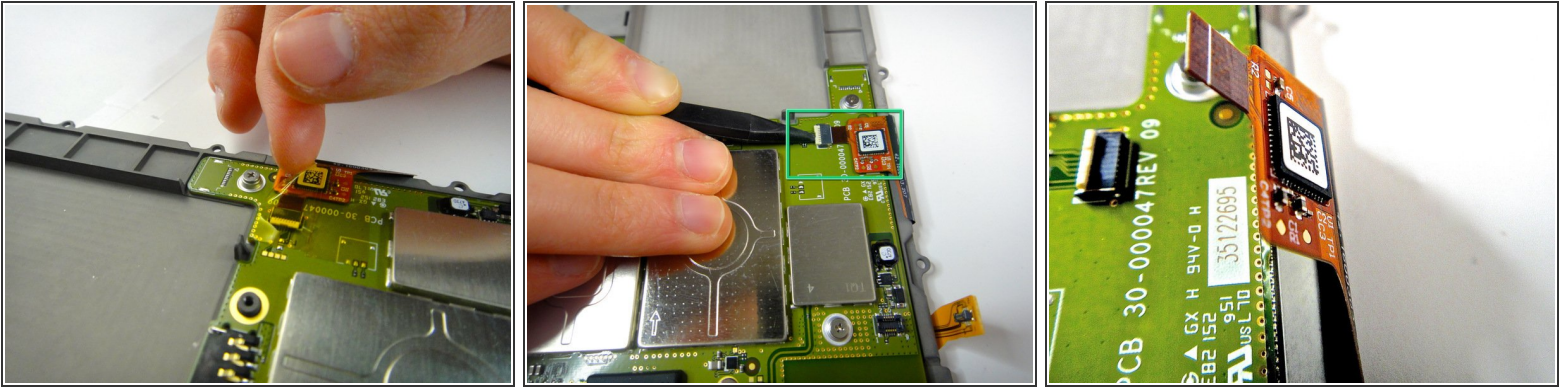
- Flip up the retaining flap on the small ZIF connector at the bottom of the motherboard.
- Pull the small ribbon cable out of the ZIF connector.

Step 8



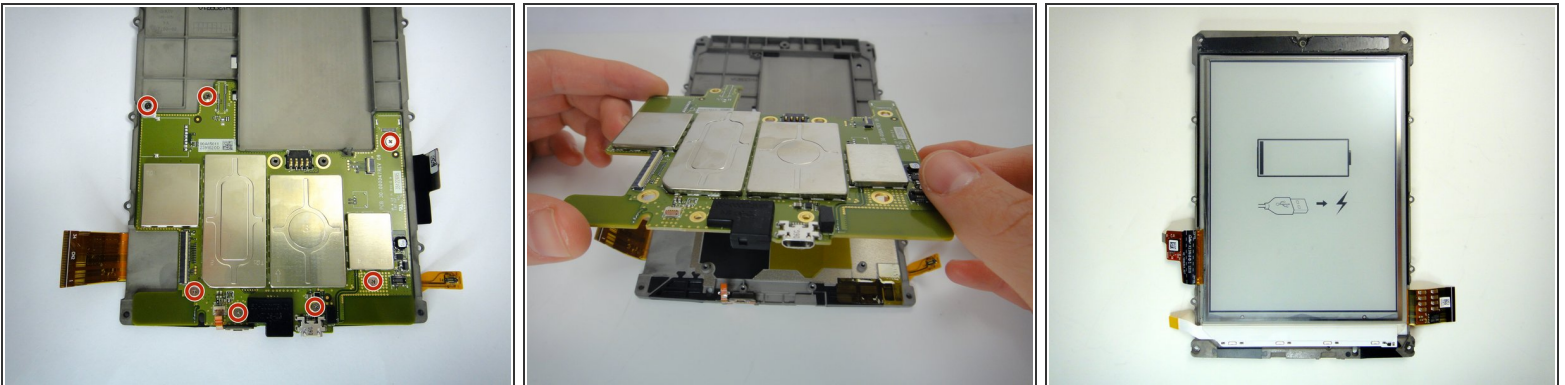
- Lift up the flat, yellow connector from its socket on the bottom right of the motherboard.

Step 9



- Remove the yellow anti-static tape from the display cable.
- Use a spudger to flip up the retaining flap on the display cable ZIF connector.
- Carefully pull the display cable out of its socket.

Step 10



- Remove the remaining 7 Phillips screws.
- Lift the motherboard out of the midframe.
- ☞ The screen itself is glued to the midframe. If your replacement screen does not include the midframe, [heat](#) the screen with an iOpener and gently pry it from the midframe with a spudger or plastic card.

To reassemble your device, follow these instructions in reverse order.

