



# Kindle Paperwhite 3rd Generation Screen/Display Touch Panel Replacement

Use this guide to replace your Kindle Paperwhite's screen if it is acting unresponsive or if the screen is dull and dim.

Written By: Micah Smart



## INTRODUCTION

Amazon's Kindle Paperwhite 3rd Generation possesses a six inch, 300 PPI display. This guide requires that the Kindle is turned off, and that a plastic opening tool, angled precision tweezers, and a PH000 screwdriver are used.


---

### TOOLS:


- [Phillips #000 Screwdriver](#) (1)
  - [Tweezers](#) (1)
  - [64 Bit Driver Kit](#) (1)
  - [iFixit Opening Tools](#) (1)
  - [Precision Tweezers Set](#) (1)
  - [Metal Spudger Set](#) (1)
-

## Step 1 — Battery

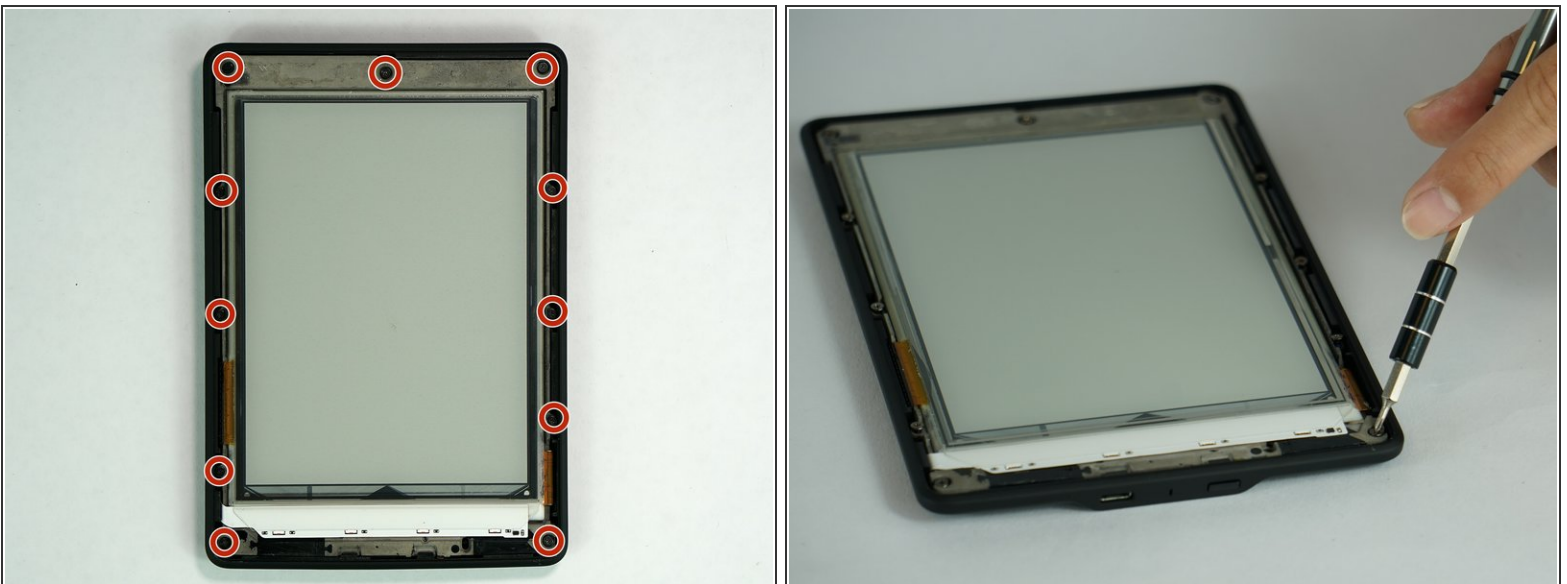


 Ensure that the device is turned off before beginning.

- Gently pry the bezel off the screen using a plastic opening tool. Start at the corners and slide around the edges until you return to your starting point.

 Be careful if using the metal spudger, as it can scratch the surface of the Kindle.

## Step 2



- Unscrew the eleven 3.2 mm Phillips #000 screws surrounding the frame.

## Step 3



- Gently lift the mid-frame out of the case with your hands.

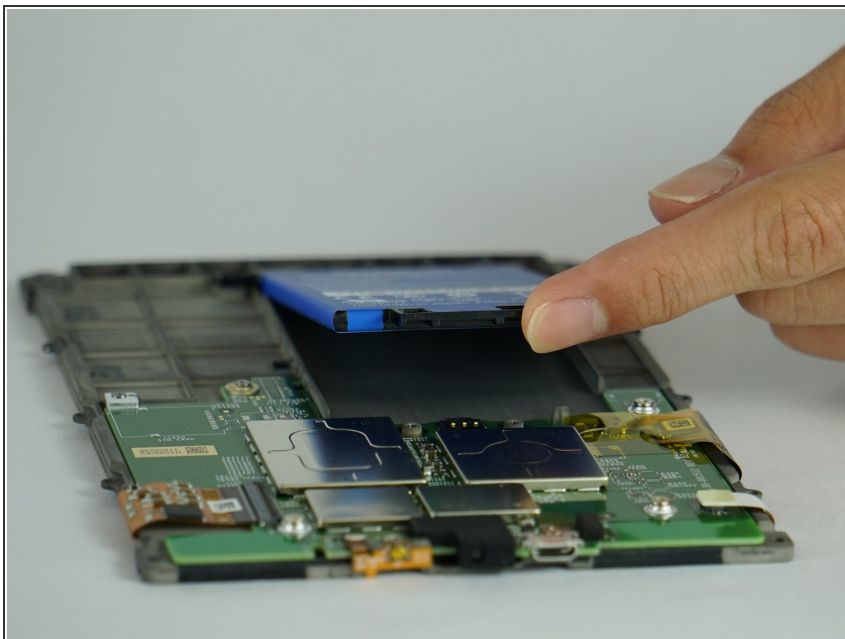
## Step 4



- Unscrew the three 3.0 mm Phillips #000 screws that are securing the battery.

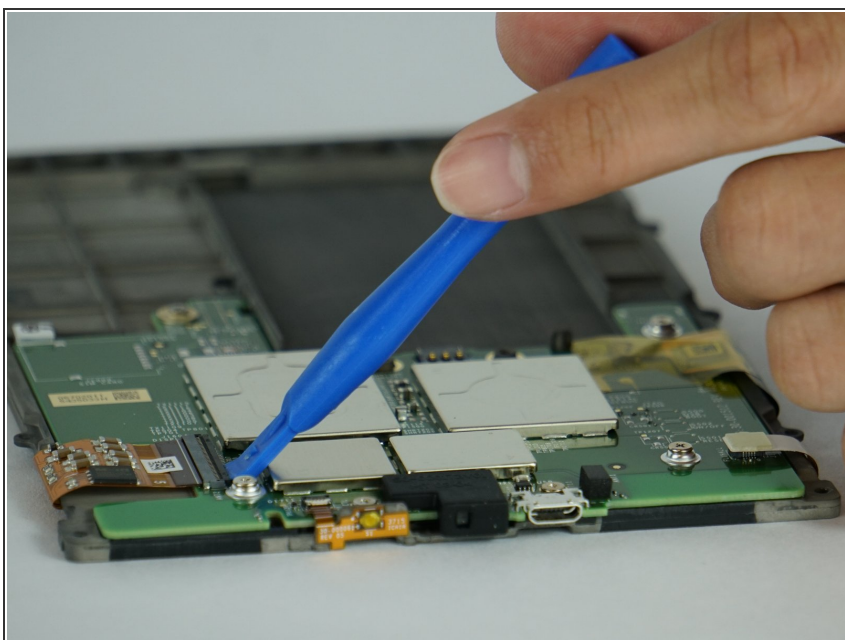


## Step 5



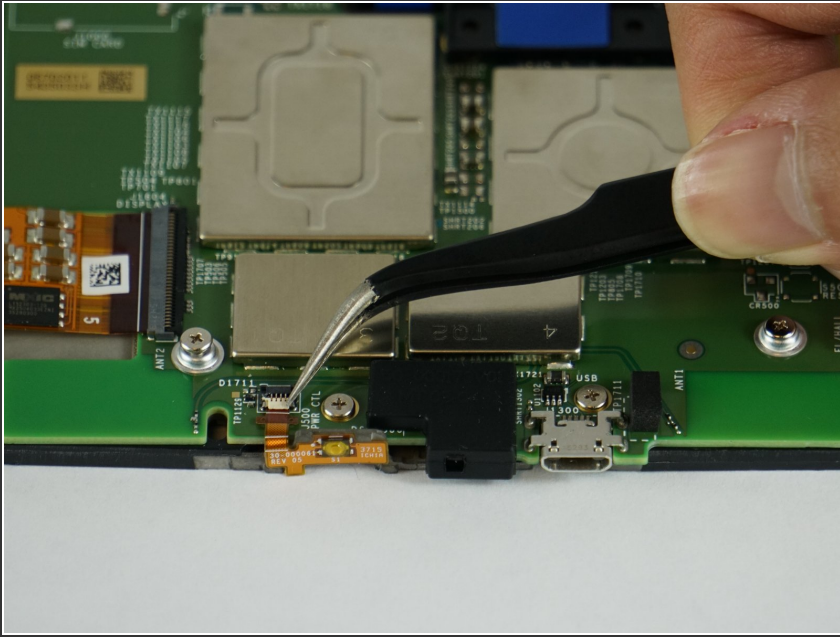
- Gently lift the battery from the frame.

## Step 6 — Motherboard



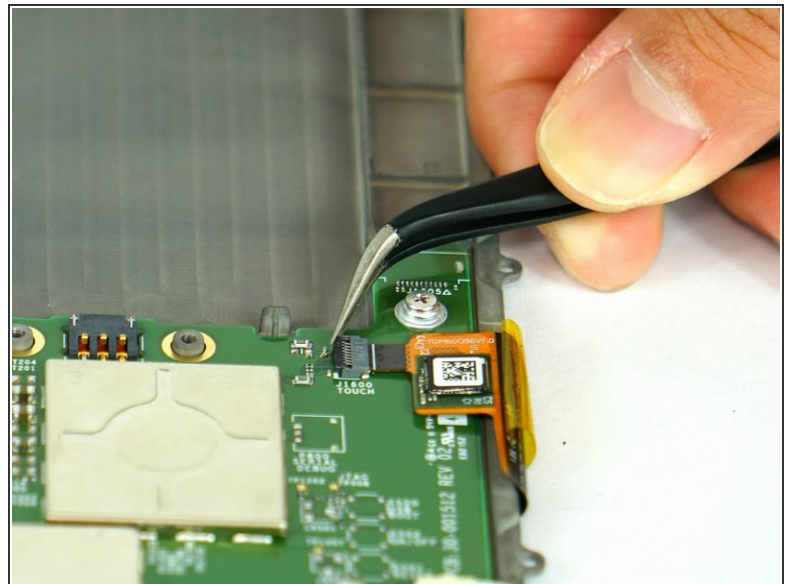
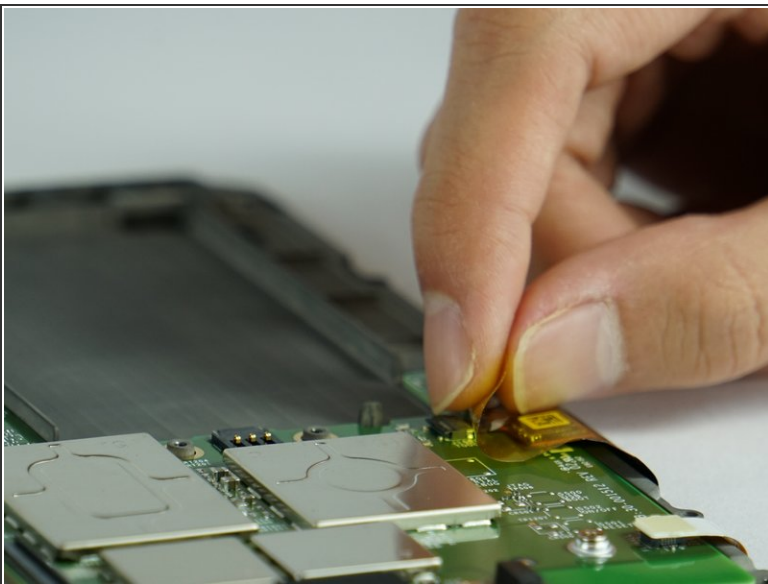
- Flip the black latch with a plastic opening tool, and then gently pull back the orange ribbon cable.

## Step 7



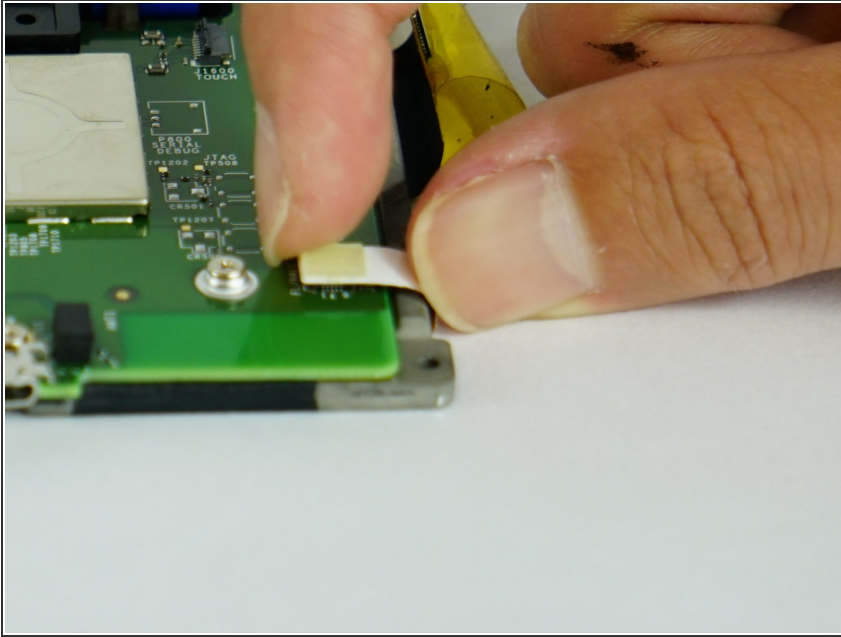
- Flip the tiny off-white latch with angled precision tweezers toward the direction of the battery.
- Gently peel back the orange ribbon cable.

## Step 8



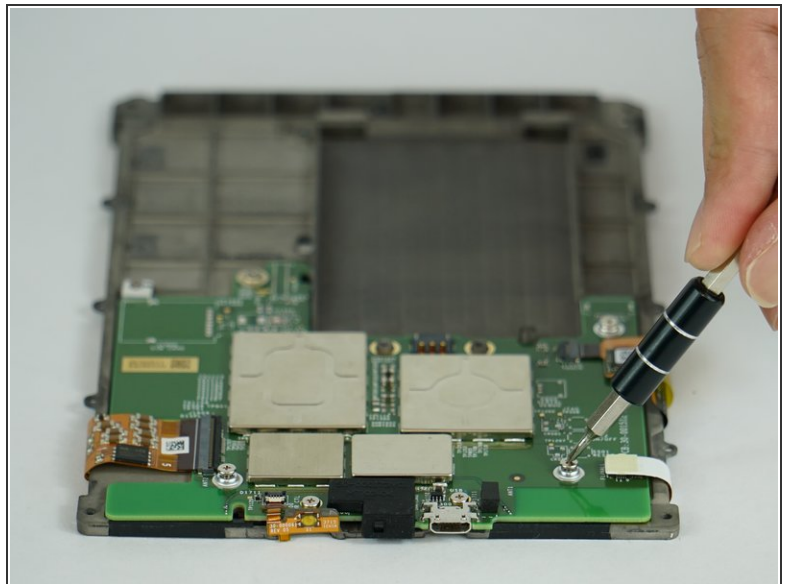
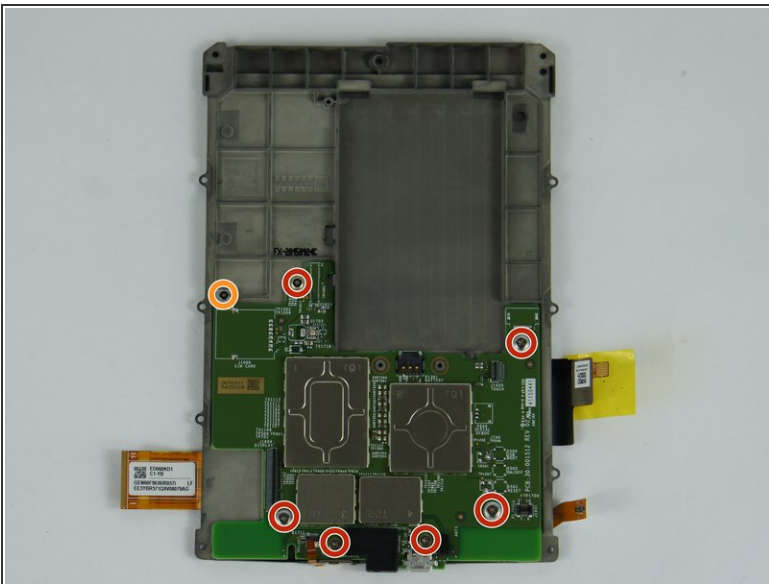
- Peel back the orange ribbon cable near the battery.
- Flip the tiny black latch with angled precision tweezers toward the closest edge of the device.

## Step 9



- Peel back the white connector with your fingers.

## Step 10

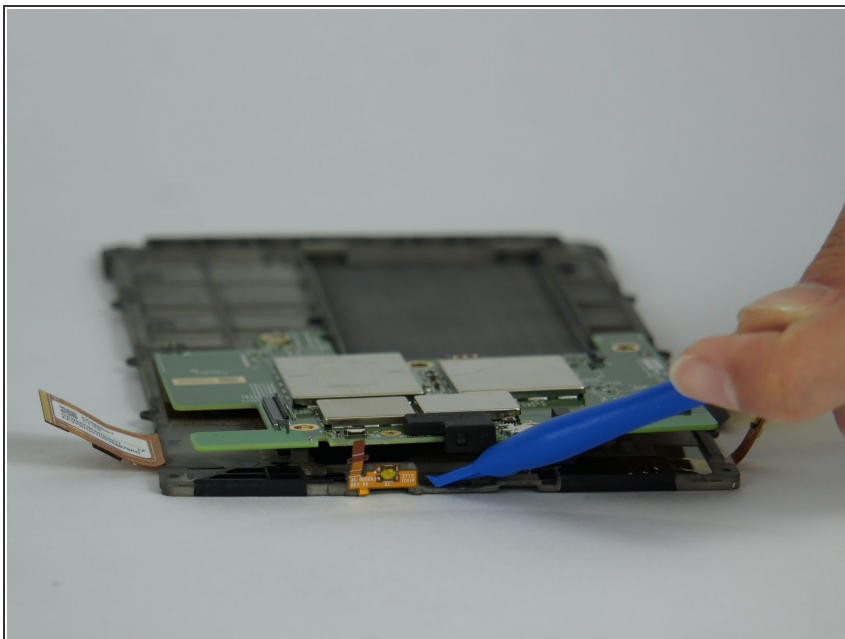


- Unscrew the six 3.0 mm Phillips #000 screws surrounding the motherboard.
- Unscrew the one 2.5 mm Phillips #000 screw.
- ⓘ There is a little metal plate underneath the 2.5 mm screw and washers under four of the 3.0 mm screws.

This document was generated on 2019-09-17 12:06:11 AM (MST).



## Step 11



- Use a plastic opening tool to lift the motherboard upwards from the frame.

## Step 12 — Screen/Display Touch Panel



- ⓘ The touchscreen is attached to the rest of the frame. Purchasing a new frame will require reattaching the motherboard and the battery.

To reassemble your device, follow these instructions in reverse order.