



Kitchen Smith by Bella 1.7L Electric Kettle

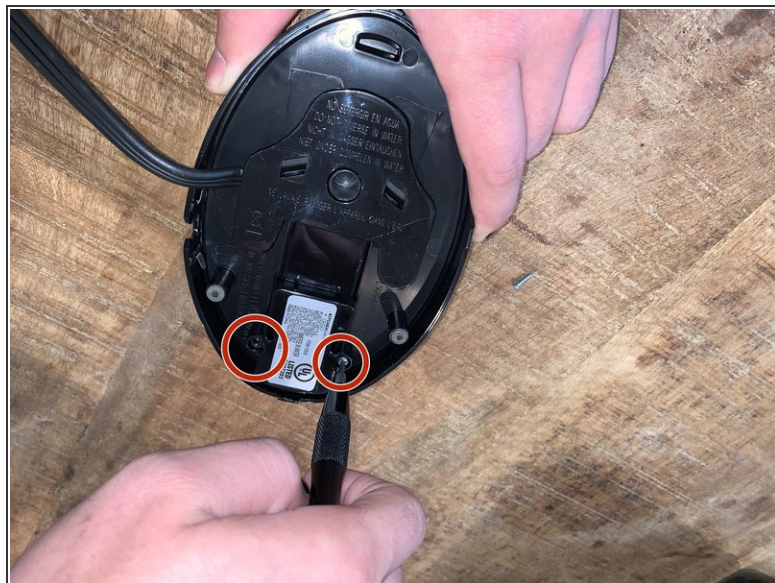
Teardown

This is a cordless electric kettle.

Written By: Daniel Hurwitz

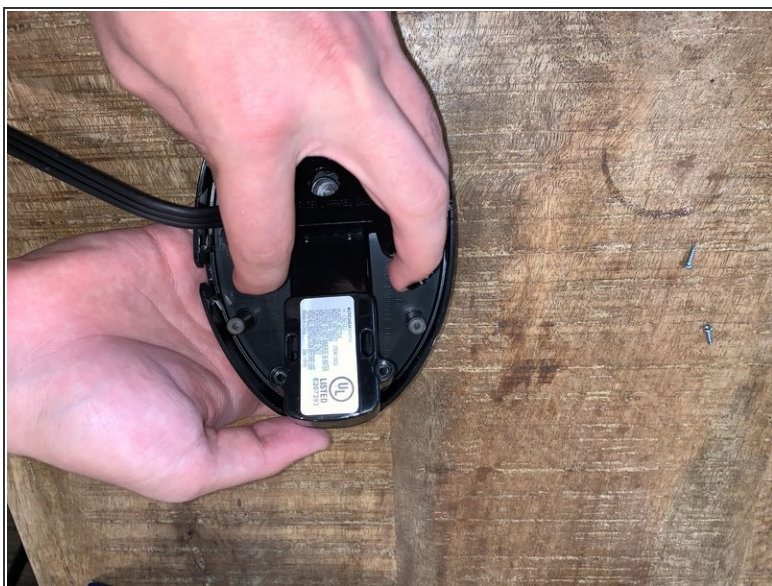


Step 1 — Kitchen Smith by Bella 1.7L Electric Kettle Teardown



- Unscrew triwing screws from base using a TA18 screwbit

Step 2



- Remove plastic cover from base

Step 3



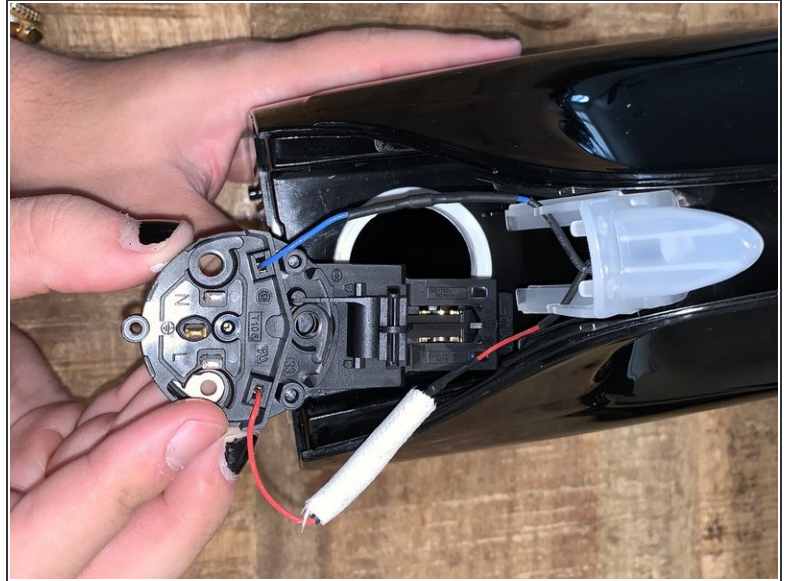
- Remove Power connector from base

Step 4



- Remove triwing screws from bottom of chamber using TA18 screw bit

Step 5



- Remove Switch Circuit from Chamber

Step 6



- Remove the heating element from chamber

To reassemble your device, follow these instructions in reverse order.