



KitchenAid KHM512ER Power Cord Replacement

Replacing the power cord on a KitchenAid KHM512ER

Written By: Brad Daniels



INTRODUCTION

Is your power cord frayed or damaged? Follow this guide to replace it.



TOOLS:

- [Slip Joint Pliers](#) (1)
 - [iFixit Opening Tools](#) (1)
 - [Phillips #2 Screwdriver](#) (1)
-

Step 1 — Power Cord



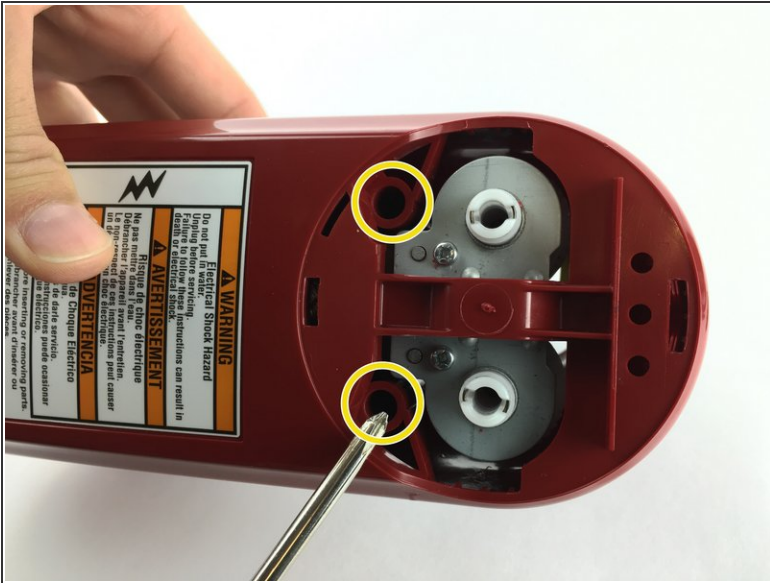
- Insert the back of a plastic opening tool into one of the beater holes
- Apply force to pull the circular plastic part off.
- If necessary, use the other side of the plastic opening tool to pry the circular plastic part off.

Step 2



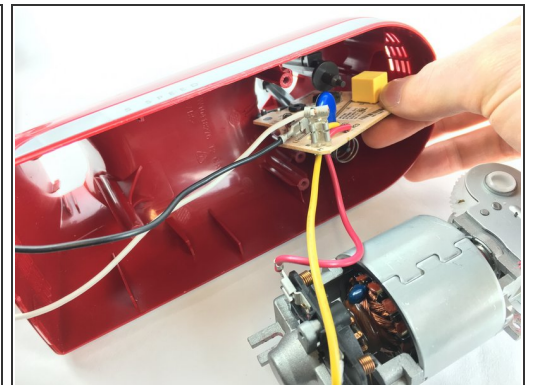
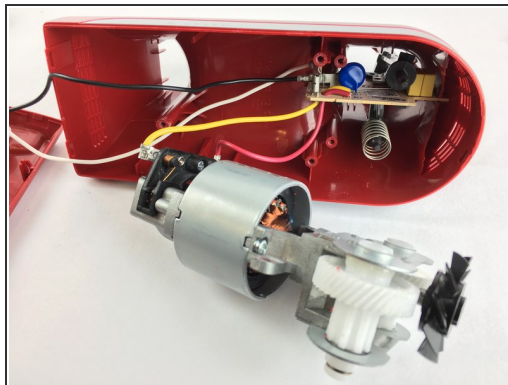
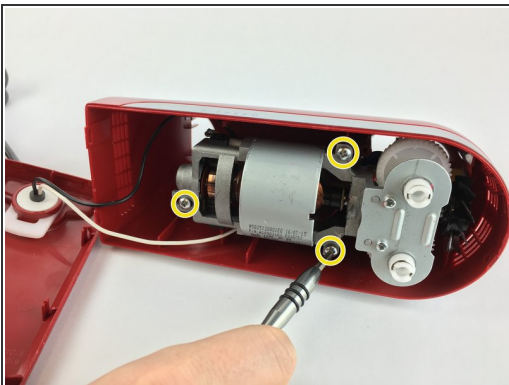
- Use a plastic opening tool to remove the speed knob.
- Pop up the panel with a plastic opening tool.
- Use a plastic opening tool to pry the white plastic switch assembly out.

Step 3



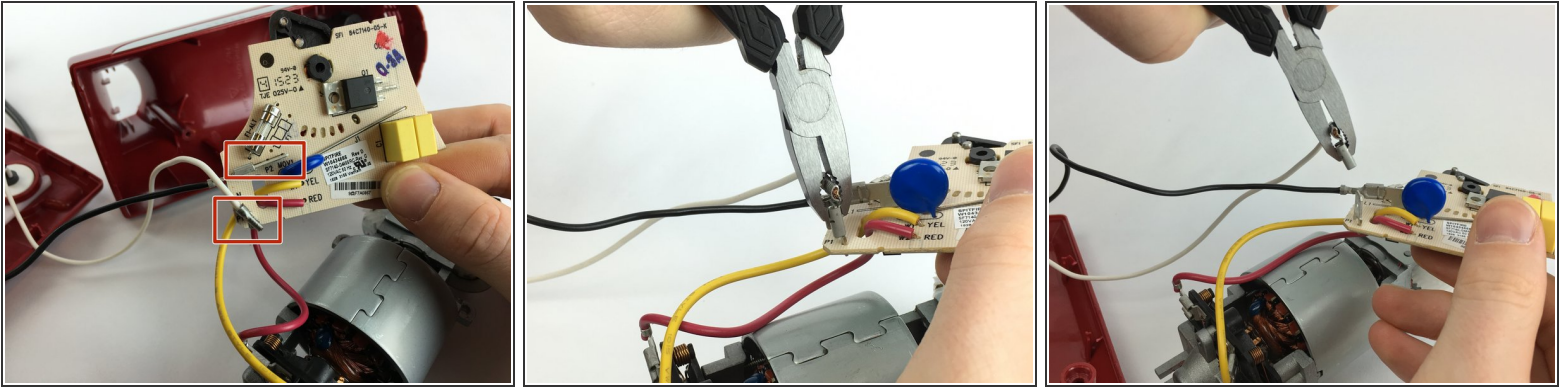
- Use a Phillips 2 screwdriver to remove the two 20.0mm screws that hold the bottom plastic piece.
- ⓘ Your screwdriver may not be long or narrow enough to reach the screws in these holes. If that's the case, use another screwdriver.
- Remove the bottom plastic piece using a plastic opening tool.

Step 4




- Using a Phillips 2 screwdriver, remove the three 20.0mm screws holding the motor assembly in place.
- Use your hands to remove the motor assembly and circuit board.

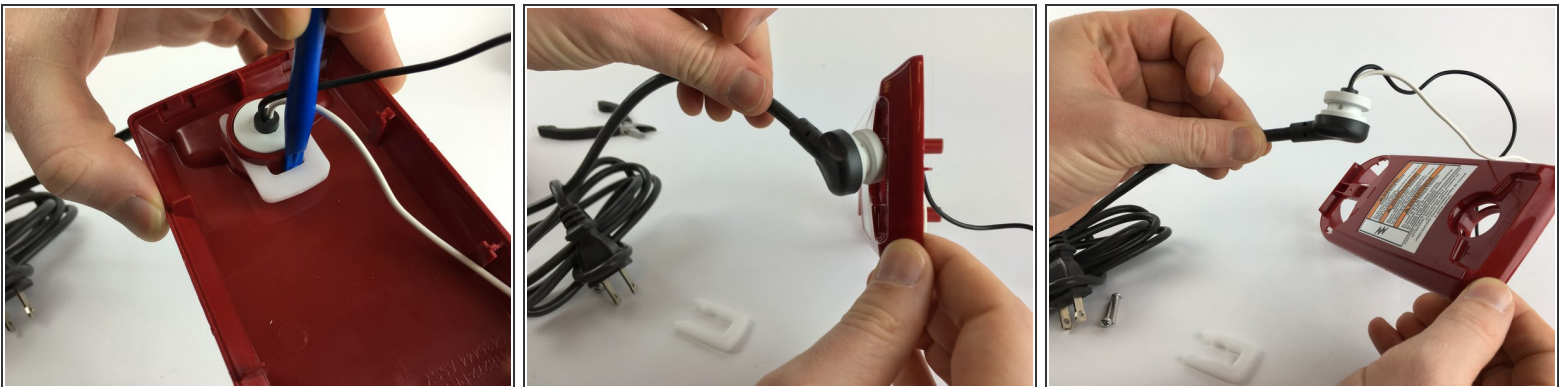
Step 5



- Firmly grip the circuit board, and using pliers, remove the black and white power cord connectors from the circuit board.

 Some force may be required. Be careful not to cut yourself on any electrical components.

Step 6



- Using a plastic opening tool, remove the white plastic clip on the inside of the bottom plastic piece.
- Once it's loose, remove it with your fingers.
- Pull the power cord through the hole.

To reassemble your device, follow these instructions in reverse order.