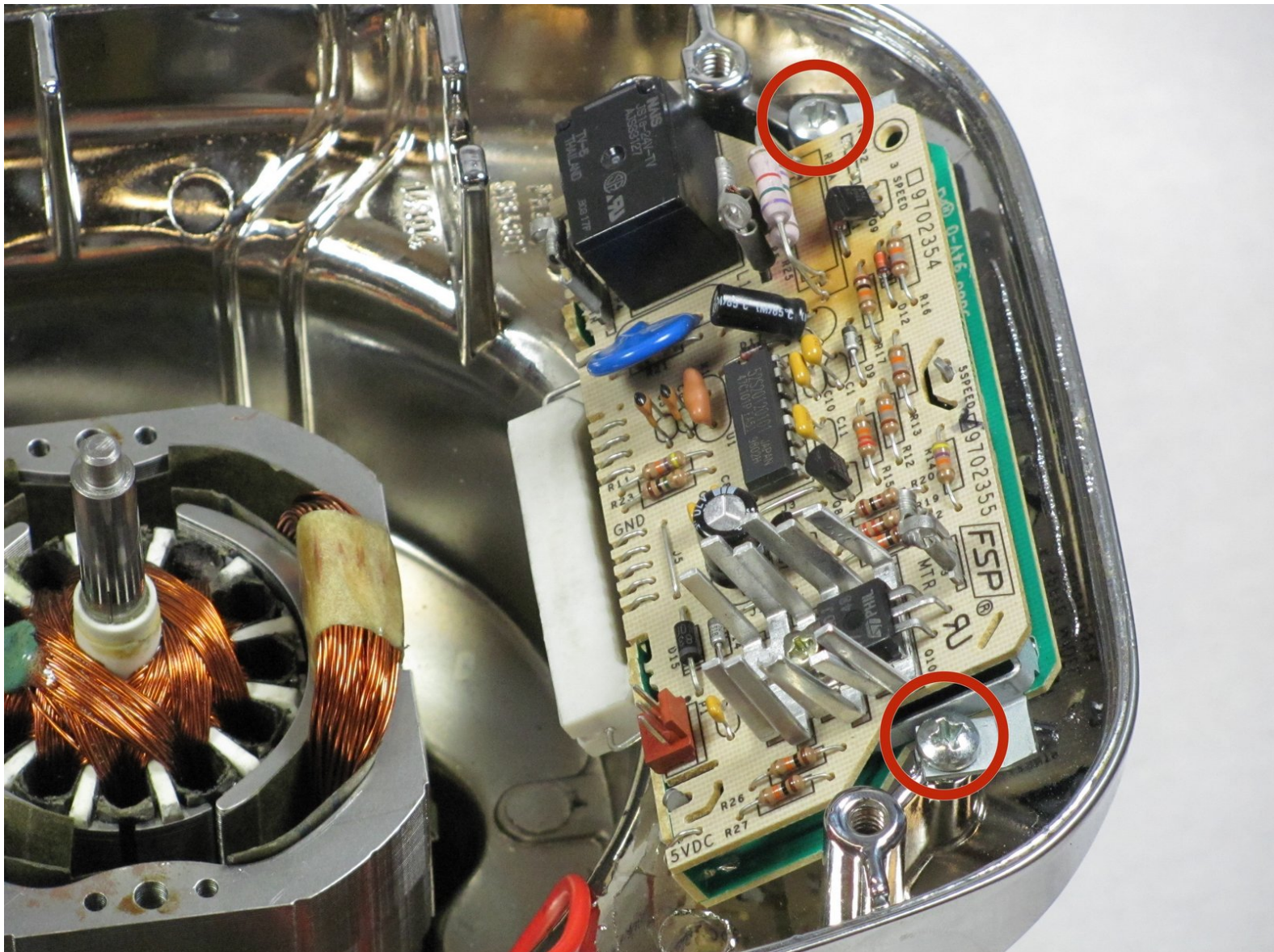




# KitchenAid KSB5CR Circuit Board Replacement

This guide will demonstrate how to properly remove the circuit board of the blender.

Written By: Cameron Geehr



---

## INTRODUCTION

The circuit board contains the hardware of the blender and instructs the rest of the blender what to do.



### TOOLS:

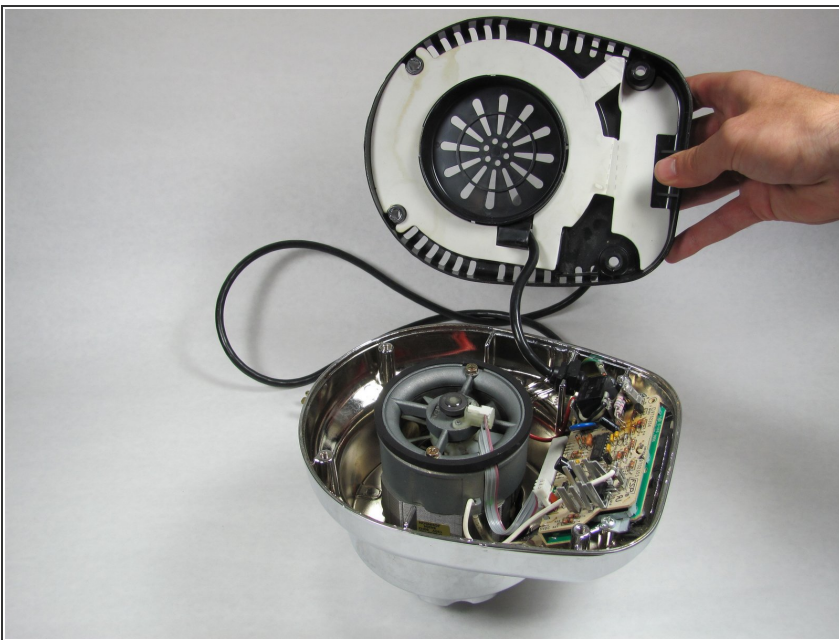
- [8" Needle Nose Plier](#) (1)
  - [Phillips #2 Screwdriver](#) (1)
-

## Step 1 — Removing the Back Panel Part 1



- Remove the glass container and place the blender upside down on a solid surface.
- Remove the four rubber feet using the needle nose pliers.
- Remove the four #7.5 Phillips 25mm screws that were located underneath the rubber feet using the Phillips #2 screwdriver.

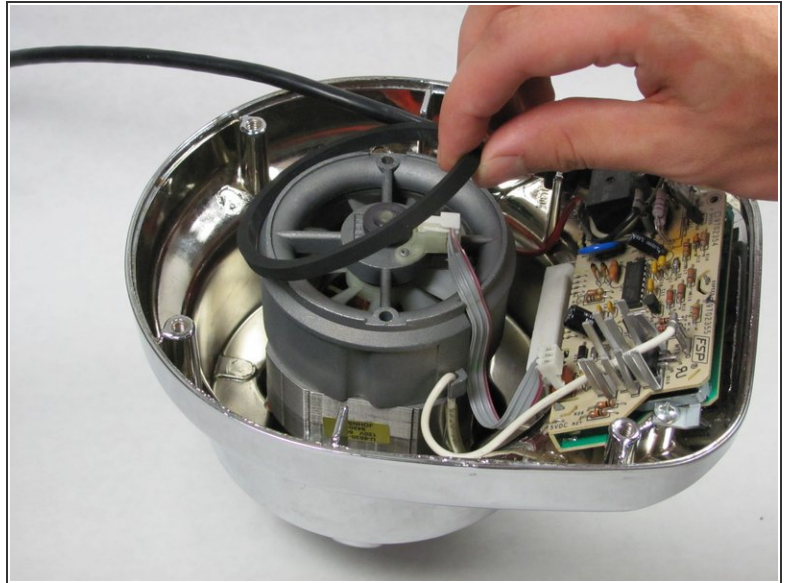
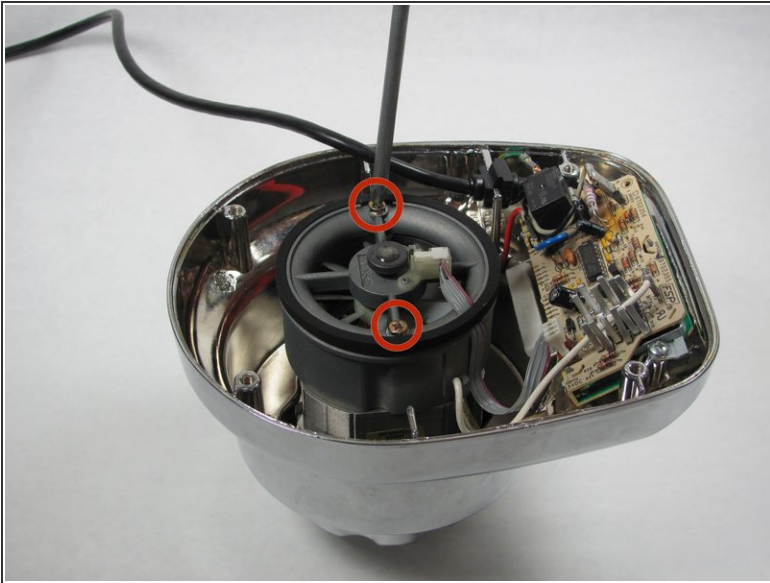
## Step 2 — Removing the Back Panel Part 2



- Lift the back panel up, sliding it along the power cord.

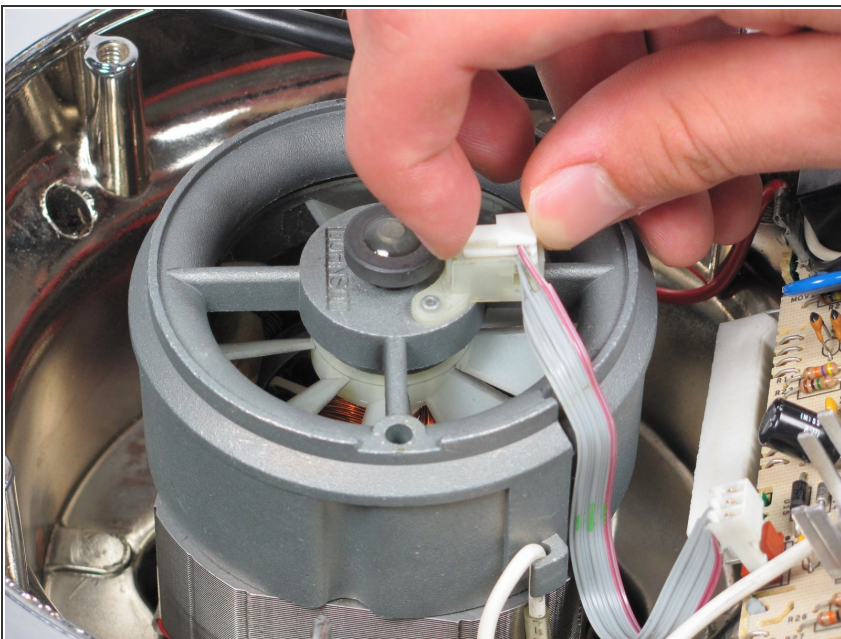


### Step 3 — Removing the O-Ring



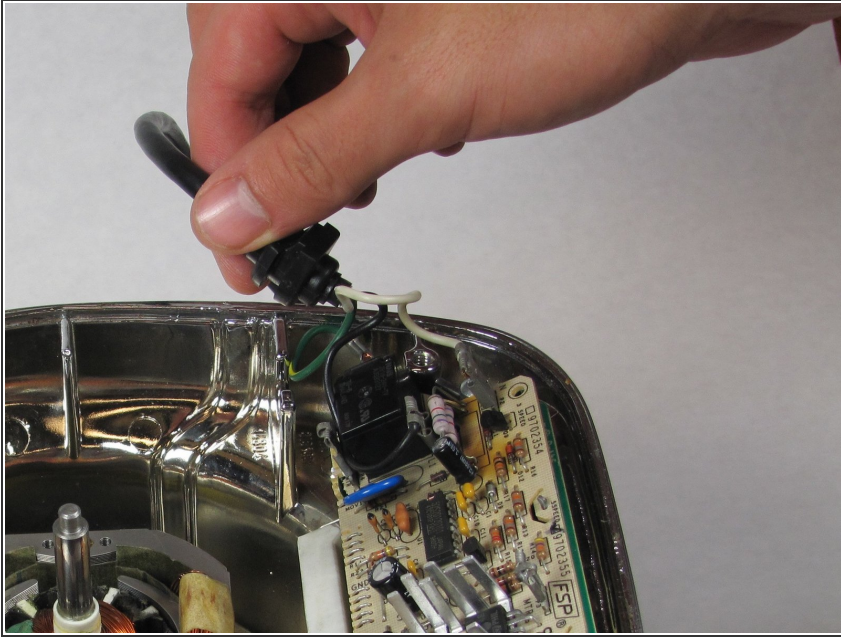
- Remove the two #6 Hex 82mm screws using the Phillips #2 screwdriver.
- Remove the rubber O-ring by lifting it up.

### Step 4 — Removing the Ribbon Cable



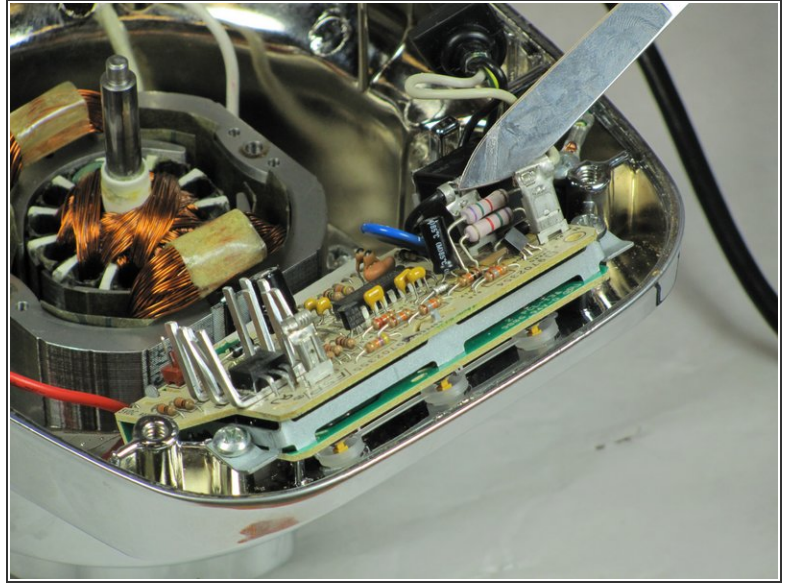
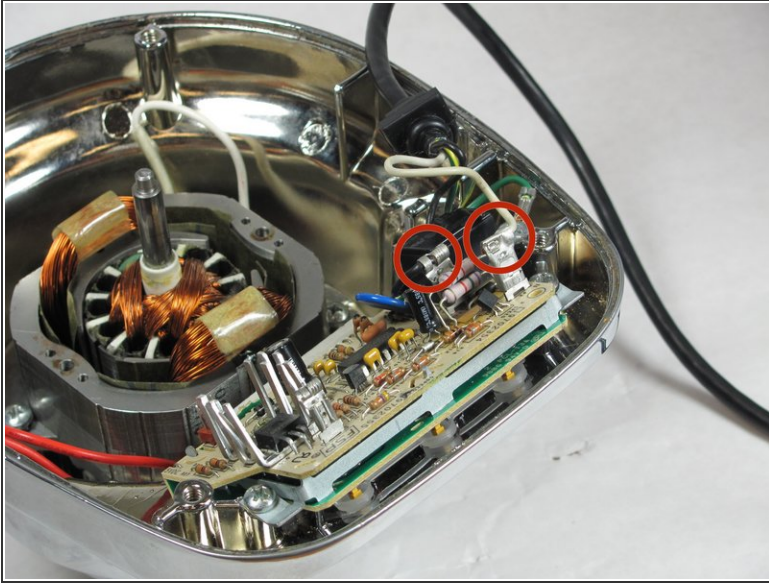
- Remove the ribbon cable from the chassis by lifting it up.
- Remove the other end of the ribbon cable from the circuit board by lifting it up.


## Step 5 — Freeing the Power Cable



- Lift up on the power cable to pop it out of its holder.

## Step 6 — Detaching the White and Black Wires

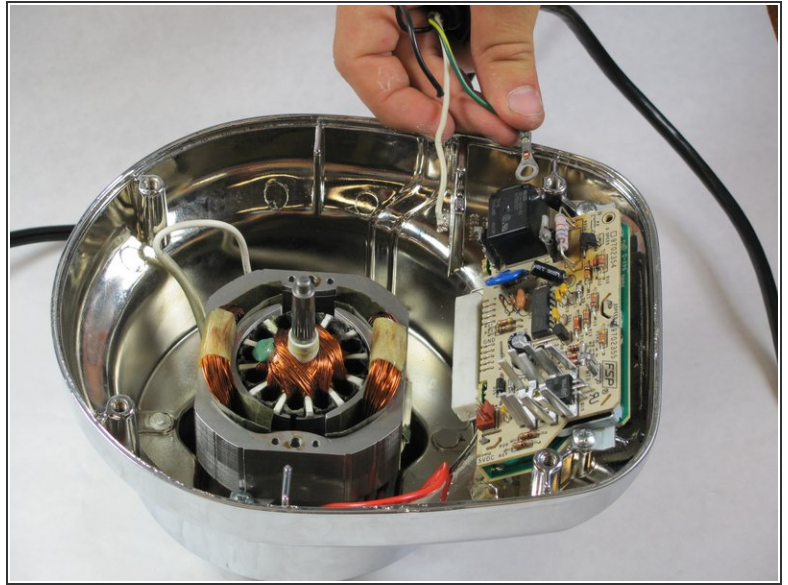
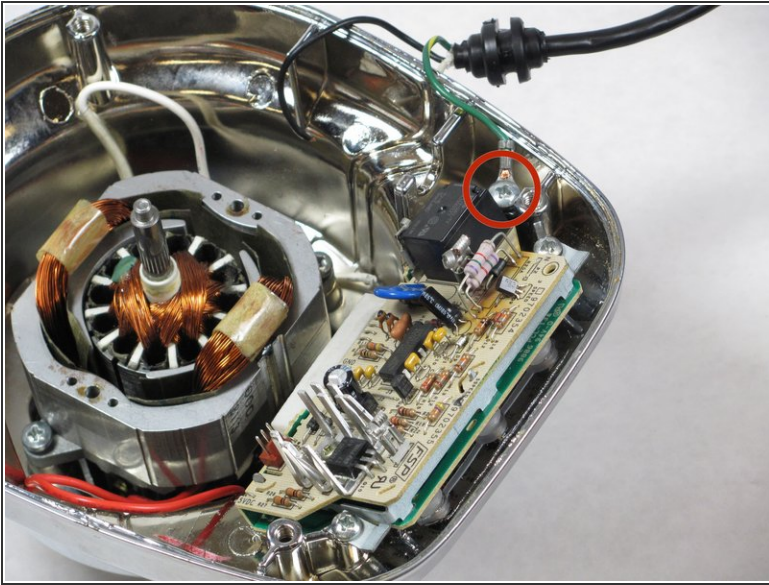


 Be gentle with the knife or you will break the circuit board.

- Slide the knife into the metal loop holding the insulation before the white copper wire, and wiggle it back and forth until it loosens.
- Pull the wire out from the metal loop that you loosened.
- Repeat this process with the black copper wire.

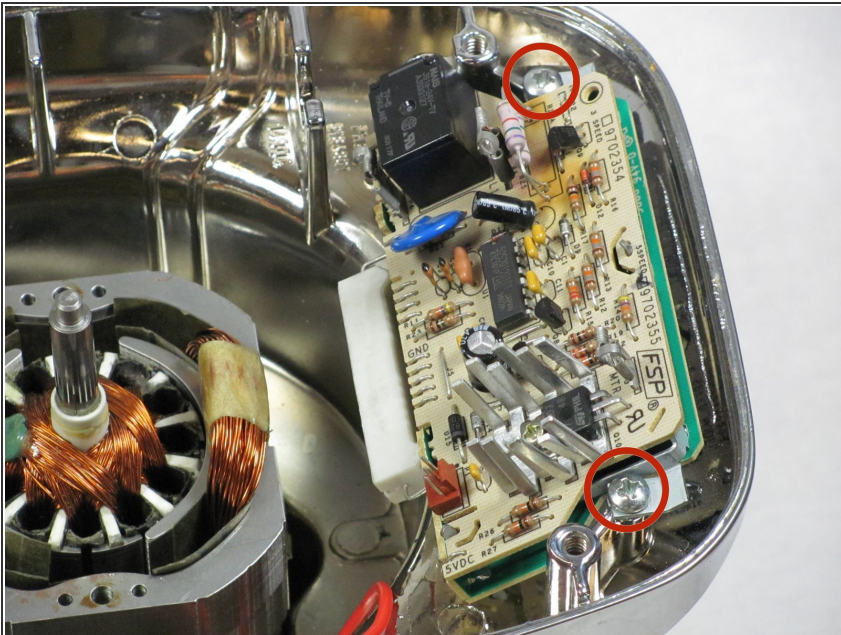


## Step 7 — Detaching the Green Wire



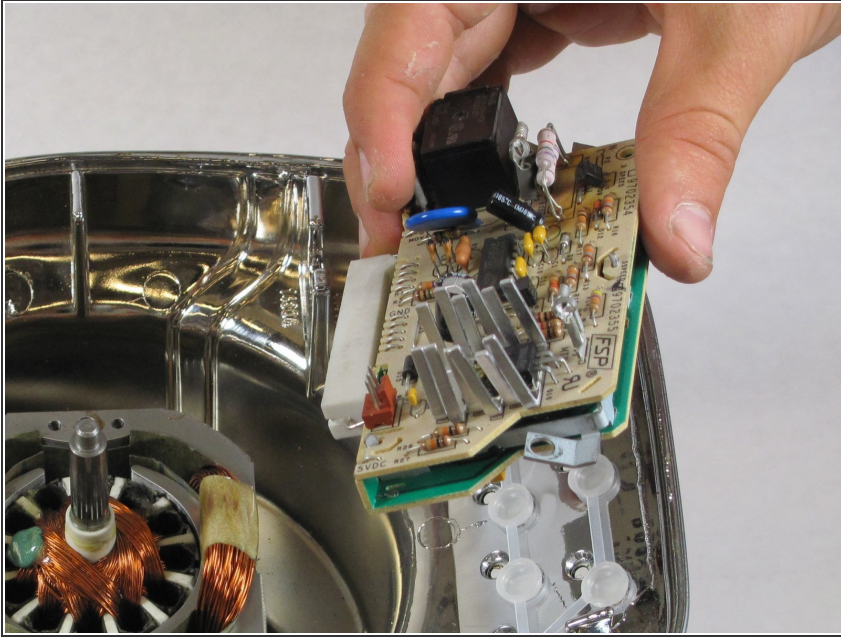
- Using the Phillips #2 screwdriver, remove the #8 Phillips 6mm screw to which the green wire is attached.

## Step 8 — Unscrewing the Circuit Board



- Remove the #8 Phillips 12mm screws using the Phillips #2 screwdriver.

## Step 9 — Removing the Circuit Board



- Remove the circuit board by lifting it up.

To reassemble your device, follow these instructions in reverse order.