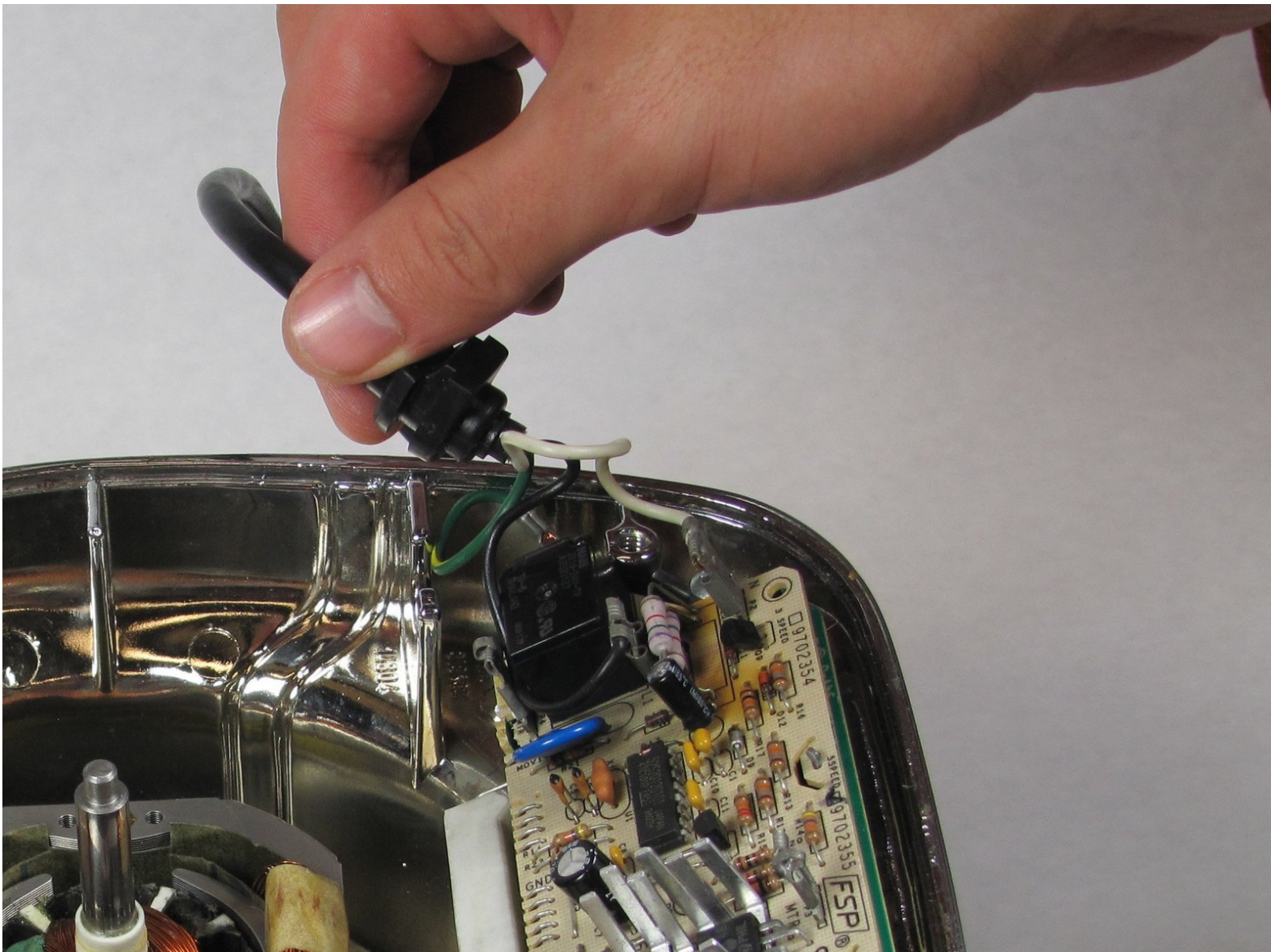




KitchenAid KSB5CR Power Cable Replacement

This guide will demonstrate how to properly remove the power cable.

Written By: Cameron Geehr



INTRODUCTION

The power cable connects the power supply to the blender.



TOOLS:

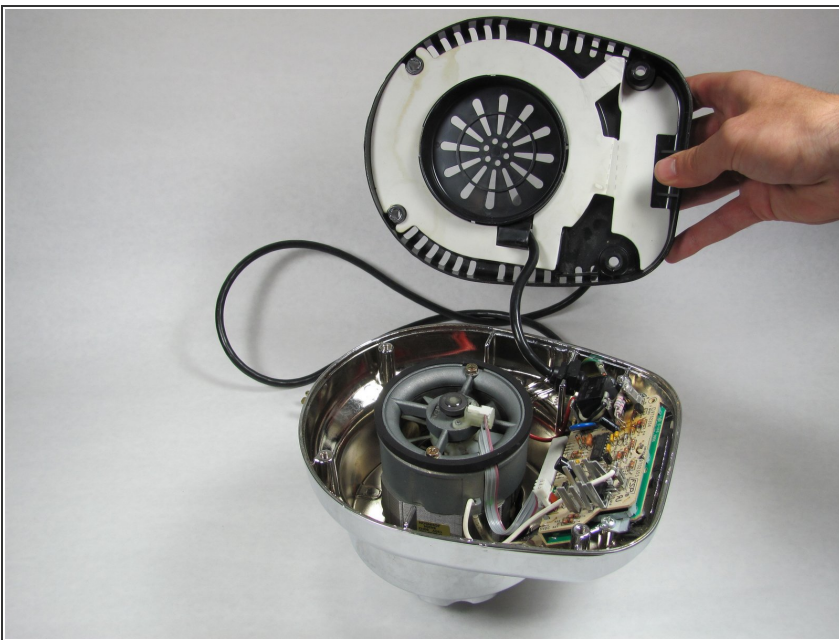
- [8" Needle Nose Plier](#) (1)
 - [Phillips #2 Screwdriver](#) (1)
-

Step 1 — Removing the Back Panel Part 1



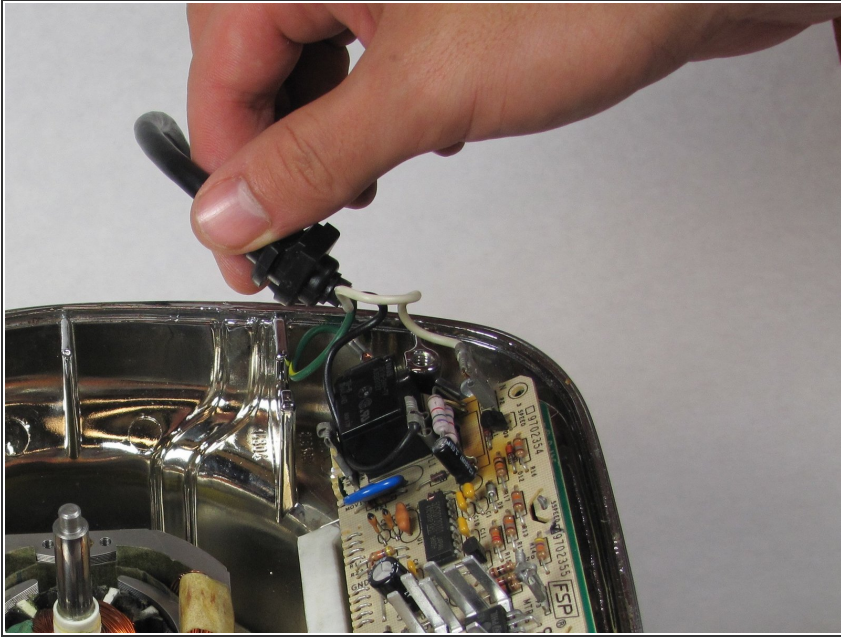
- Remove the glass container and place the blender upside down on a solid surface.
- Remove the four rubber feet using the needle nose pliers.
- Remove the four #7.5 Phillips 25mm screws that were located underneath the rubber feet using the Phillips #2 screwdriver.

Step 2 — Removing the Back Panel Part 2



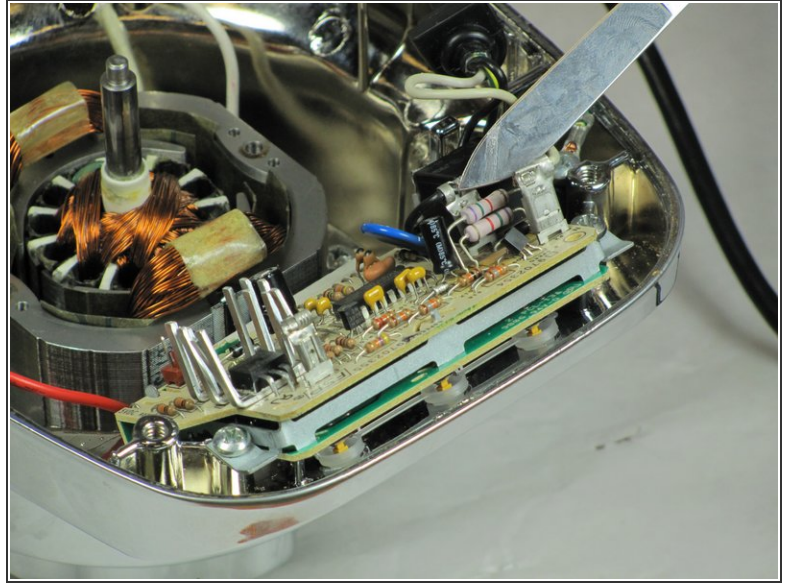
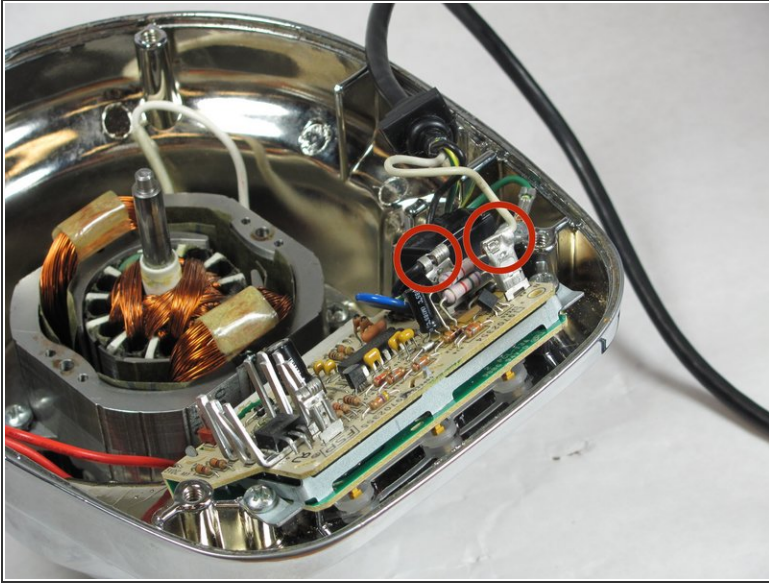
- Lift the back panel up, sliding it along the power cord.


Step 3 — Freeing the Power Cable



- Lift up on the power cable to pop it out of its holder.

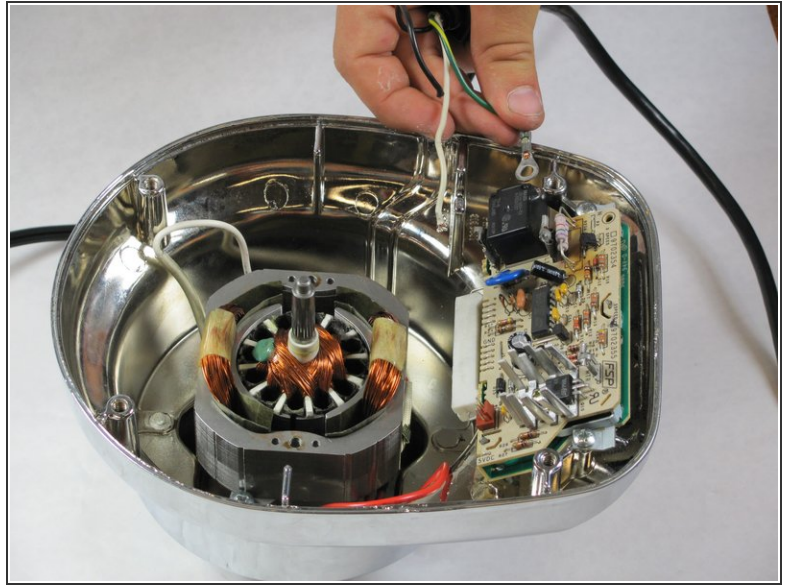
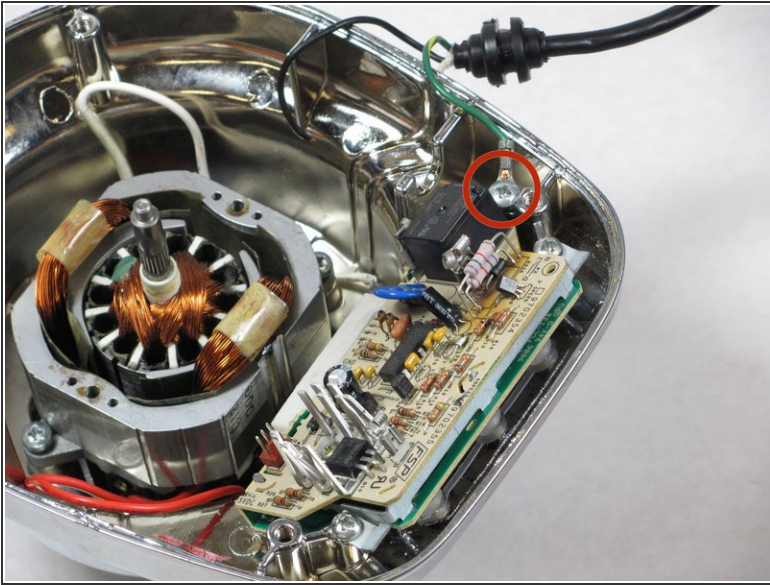
Step 4 — Detaching the White and Black Wires



 Be gentle with the knife or you will break the circuit board.

- Slide the knife into the metal loop holding the insulation before the white copper wire, and wiggle it back and forth until it loosens.
- Pull the wire out from the metal loop that you loosened.
- Repeat this process with the black copper wire.

Step 5 — Detaching the Green Wire



- Using the Phillips #2 screwdriver, remove the #8 Phillips 6mm screw to which the green wire is attached.

To reassemble your device, follow these instructions in reverse order.