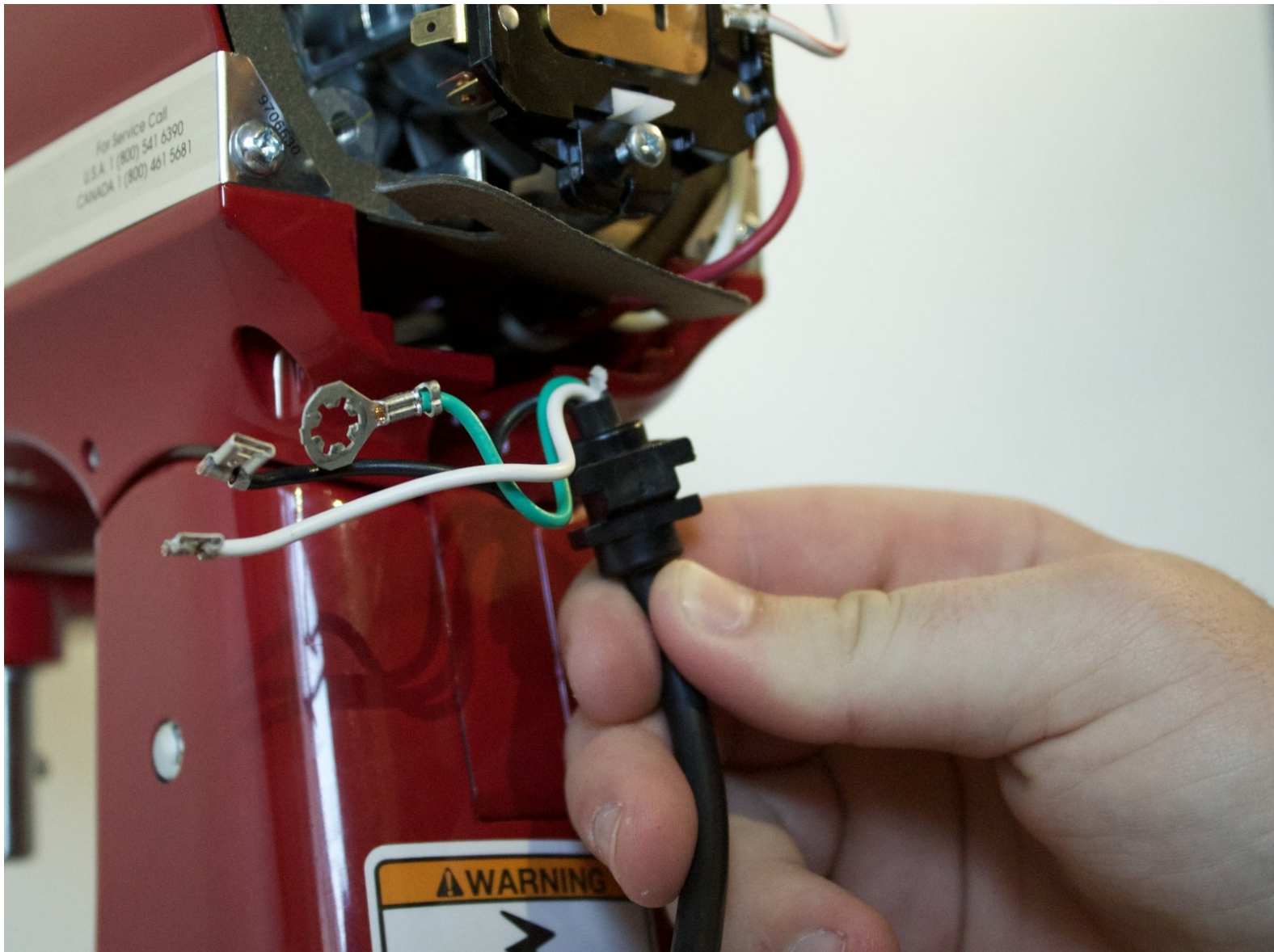




KitchenAid KSM150PSE Power Cord Replacement

This guide will show how to replace a faulty power cord in the KitchenAid KSM150PSE.

Written By: Max Prohorov



INTRODUCTION

If your device is not turning on, it may be the result of a faulty power cord. This guide demonstrates how to replace it.



TOOLS:

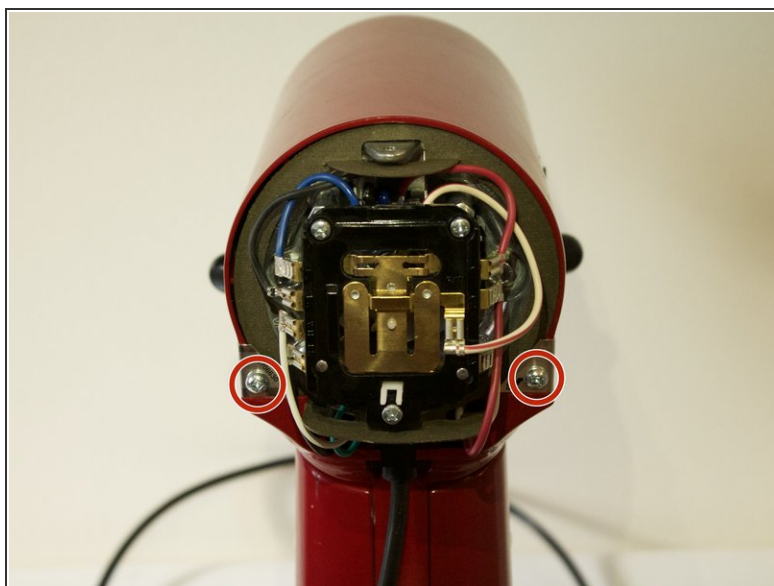
- [Phillips #2 Screwdriver](#) (1)
 - [Tweezers](#) (1)
-

Step 1 — Power Cord



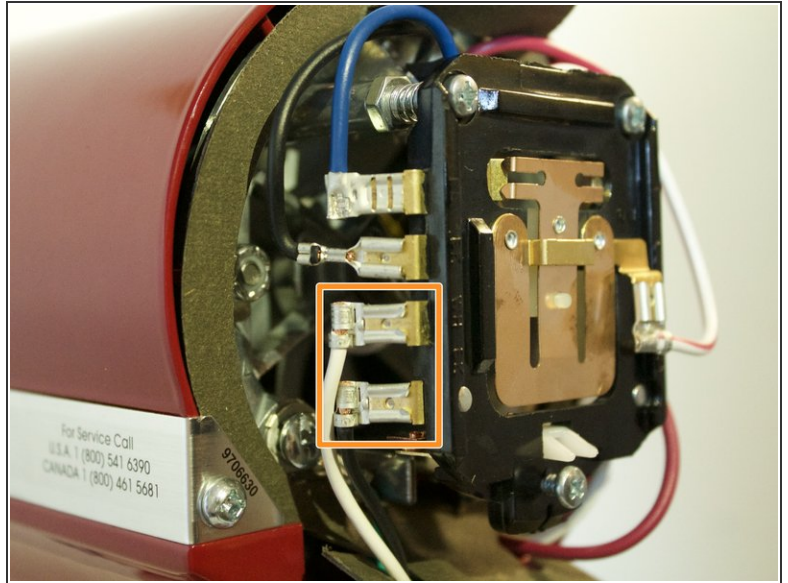
- Using a Phillips #2 screwdriver, remove the 10mm screw on the back cover by rotating it counterclockwise.
- The back cover is now free. Remove it by pulling back and up on the cover.

Step 2



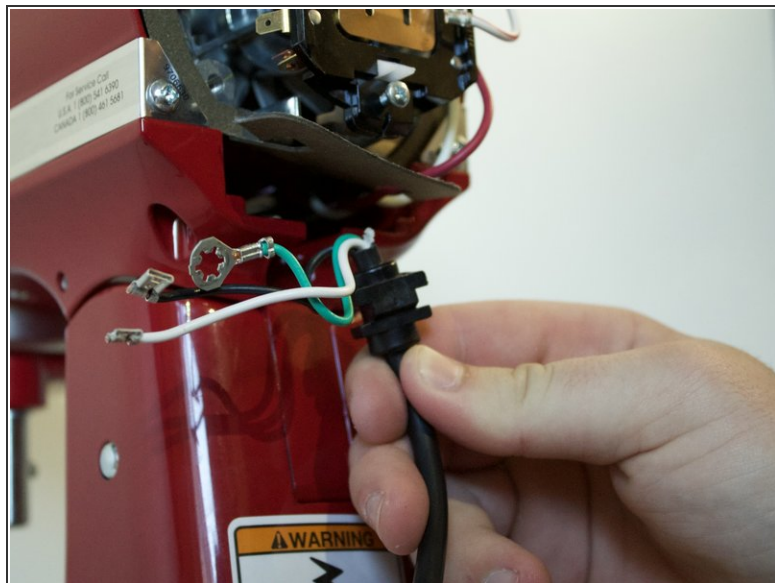
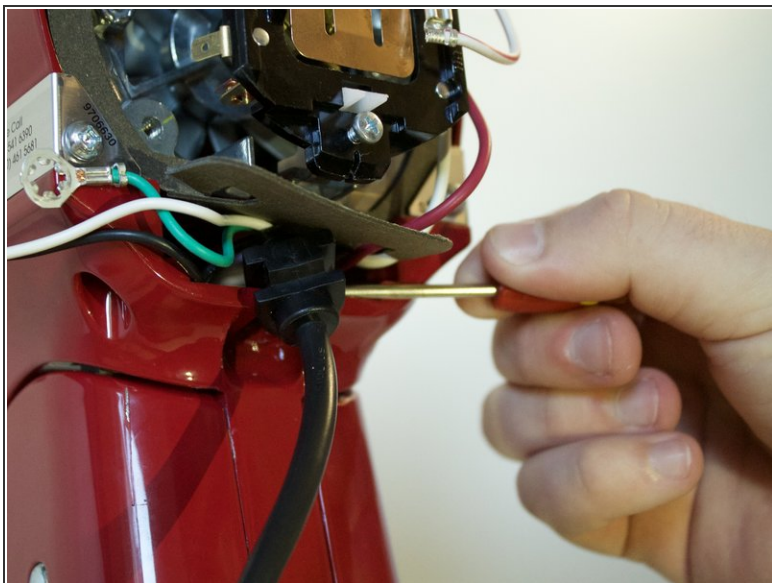
- Using a Phillips #2 screwdriver, remove the 5mm screws holding the trimband to the top housing by rotating them counterclockwise.
- Pull the trimband off the housing by grabbing each side and pulling it off the front.

Step 3



- Using a Phillips #2 screwdriver, remove the 12mm screw holding the grounding wire in place by rotating it counterclockwise.
- Using pliers or tweezers, remove the connectors attached to the white and black wires.

Step 4



- Using a screwdriver, pull the cord string relief out of the mixer by putting it behind the cord and pulling away from the mixer until it is free.
- Remove the cord from the mixer body.

To reassemble your device, follow these instructions in reverse order.