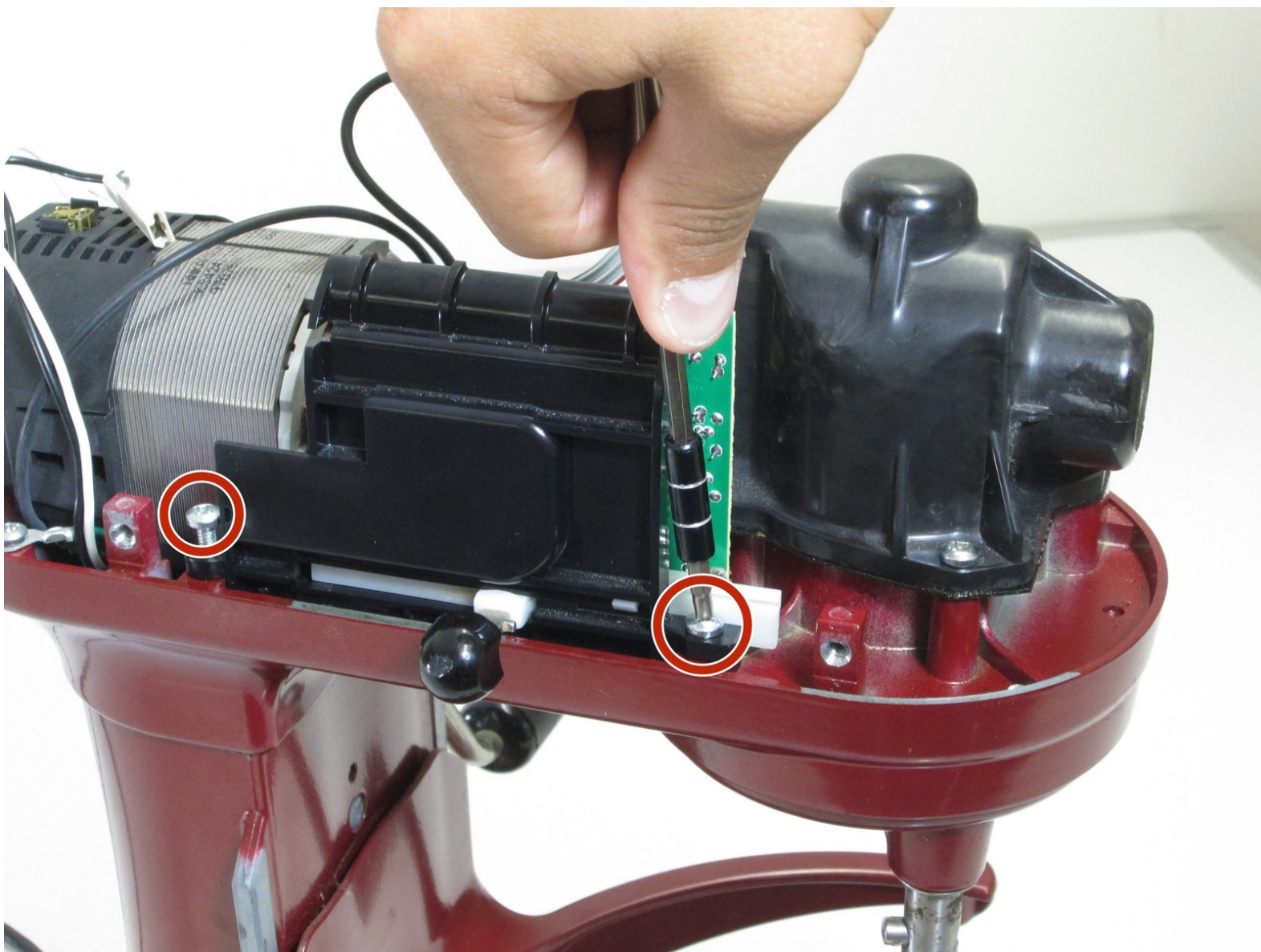




KitchenAid Professional 600 Speed Selector Replacement

If the mixer only runs at specific speeds, the selector switch may need to be replaced. This guide will show how to do so.

Written By: Tallon Dotinga



**TOOLS:**

- [Phillips #2 Screwdriver](#) (1)

**PARTS:**

- [KitchenAid Part# WP9706648](#) (1)

Step 1 — Top Cover



- Take out the screw which holds on the silver band using a Phillips #2 screwdriver.
- Remove the silver band.

Step 2



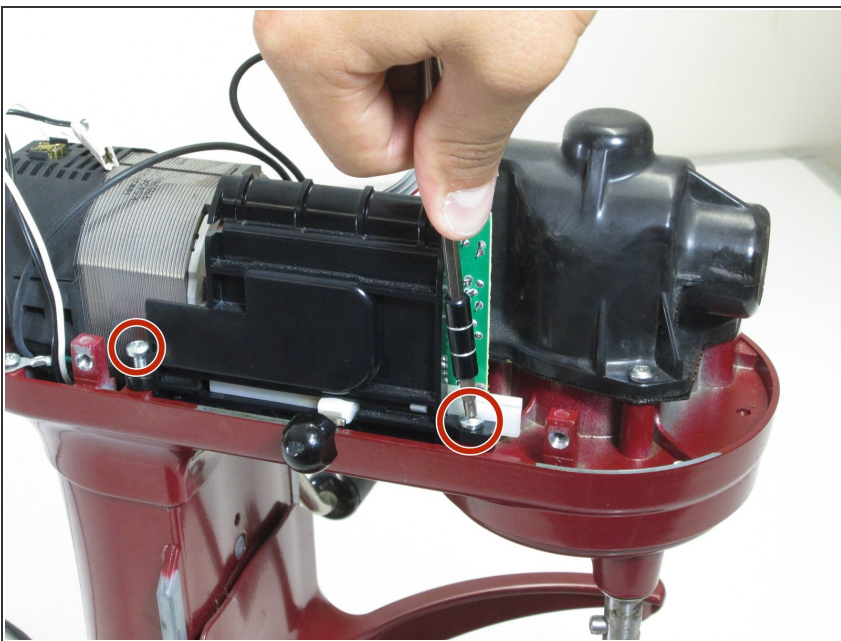
- Remove the four Phillips #2 screws located around the mixer where the band was removed.
- ⓘ This picture only shows two of the screws that you need to remove. The other two are on the exact opposite side of the mixer.

Step 3



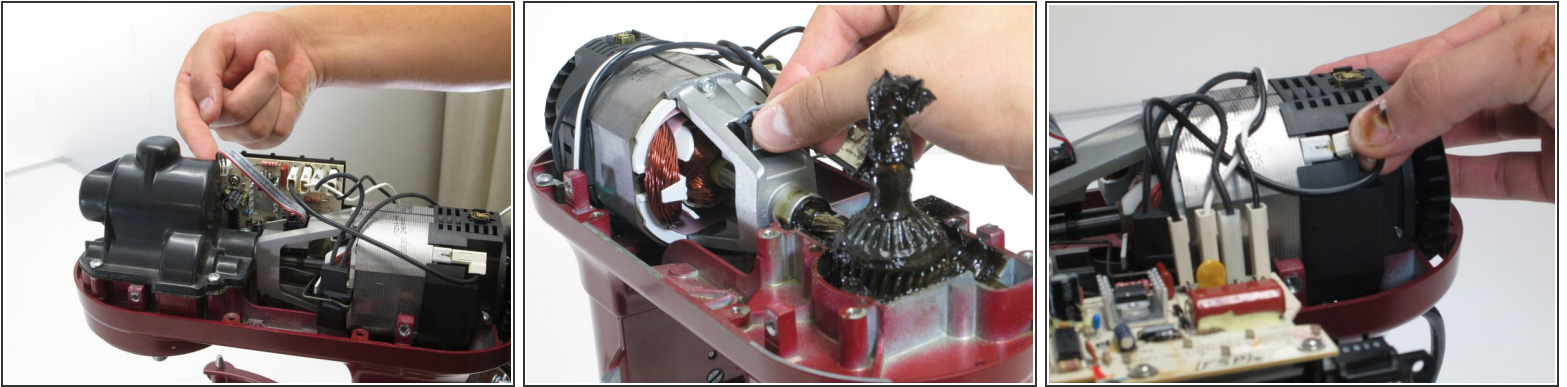
- Remove the top of the mixer to reveal the inner parts.

Step 4 — Speed Selector



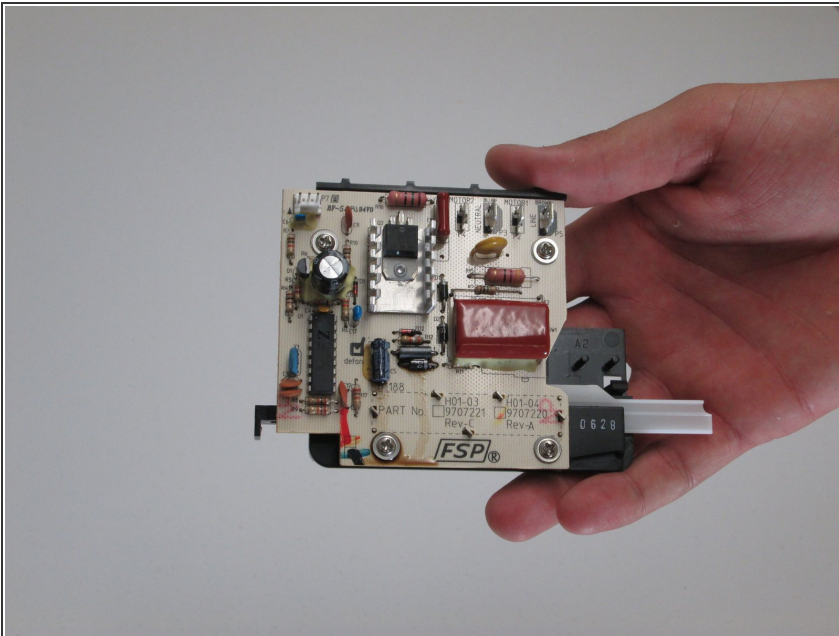
- Locate the selector switch.
- Remove the two Phillips #2 screws holding the selector switch in place.

Step 5



- Unplug the cords attached the drive motor to the switch.
- *i* We suggest numbering them left from right so they are reattached to the replacement part in the right order.

Step 6



- Pull out the Selector Switch.

To reassemble your device, follow these instructions in reverse order.