



Kobo Aura HD Screen Replacement

Guide to replacing the display on a Kobo Aura HD e-reader.

Written By: Spencer Harding



INTRODUCTION

This guide will show you how to replace the display of a Kobo Aura HD e-reader.

TOOLS:

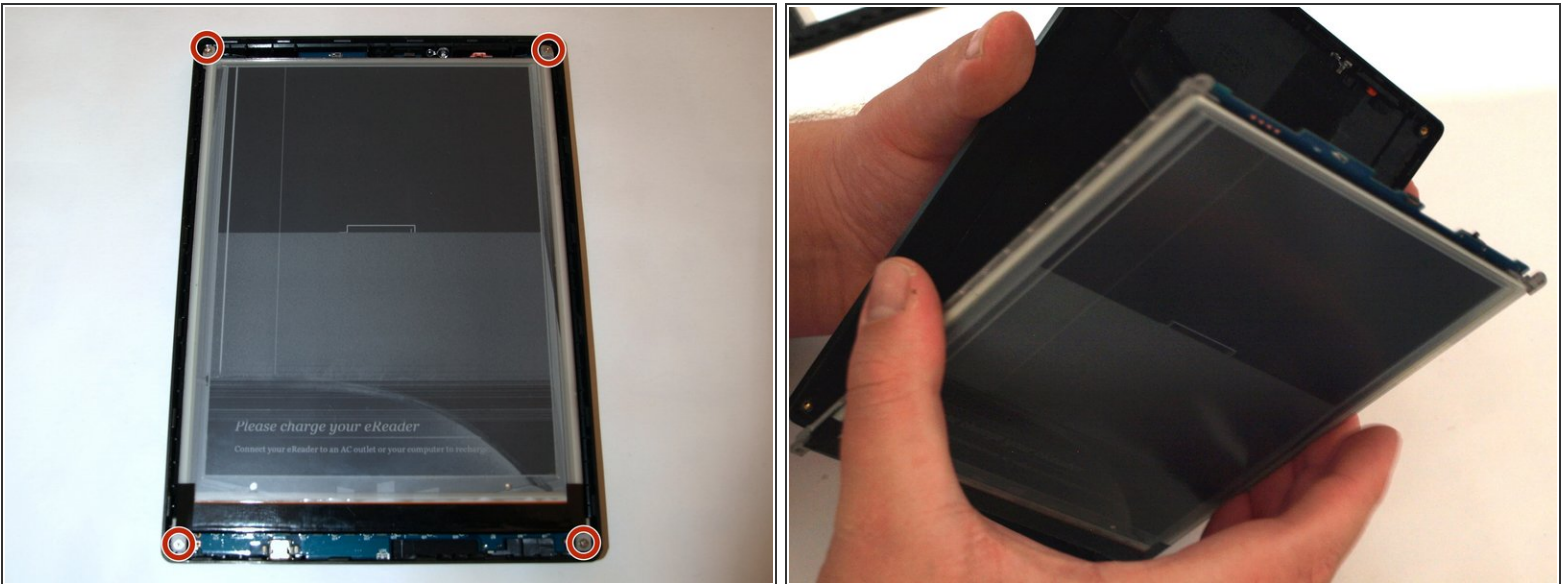
- [Spudger](#) (1)
 - [Phillips #000 Screwdriver](#) (1)
-

Step 1 — Remove front bezel



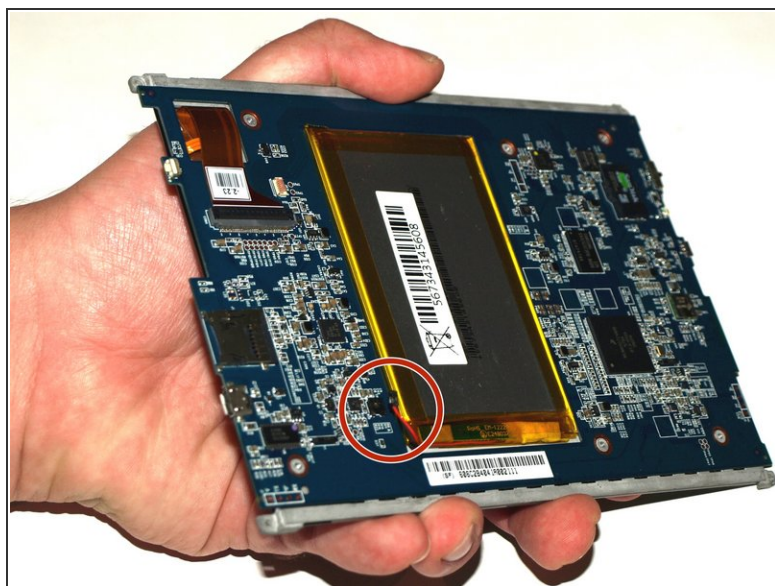
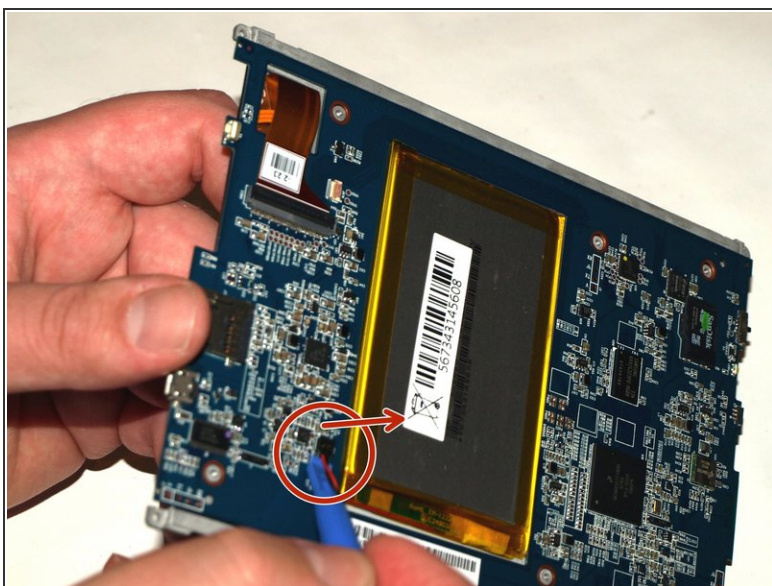
- Starting at the bottom right corner, use a plastic spudger to separate the front bezel from the case.
- Work along the bottom, then up the side, slowly going all the way around the device.

Step 2 — Remove rear casing



- Using a Phillips #000 screwdriver, remove the 4 screws at the corners of the display.
- Remove the display and motherboard assembly from the back plate.

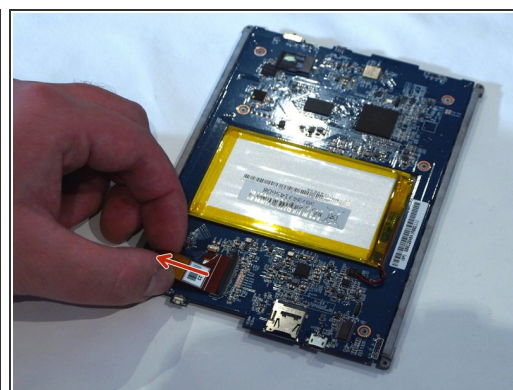
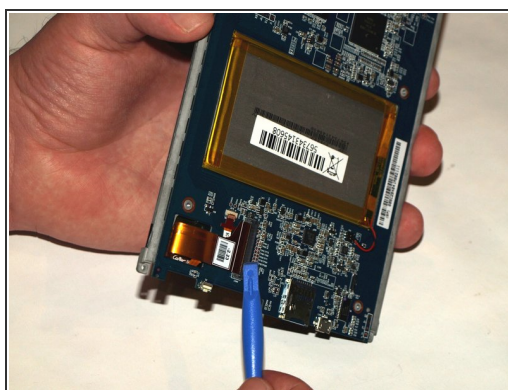
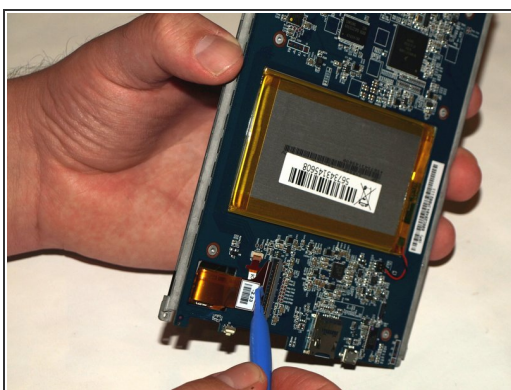
Step 3 — Disconnect the battery



- Pry the battery connector up, away from (i.e. perpendicular to) the board to disconnect it.

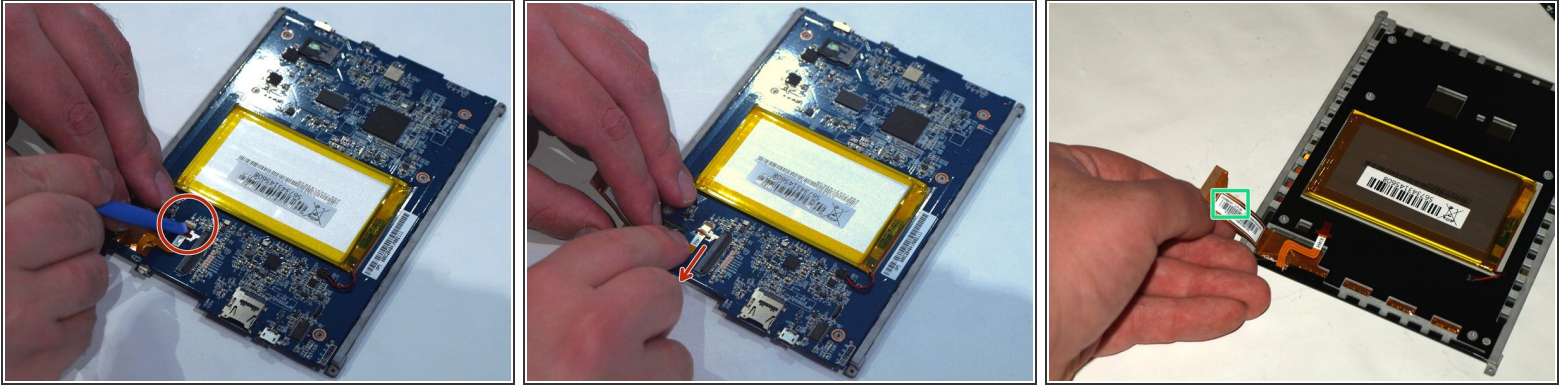
i You may find it useful to use the spudging tool for this.

Step 4 — Disconnect main display cable



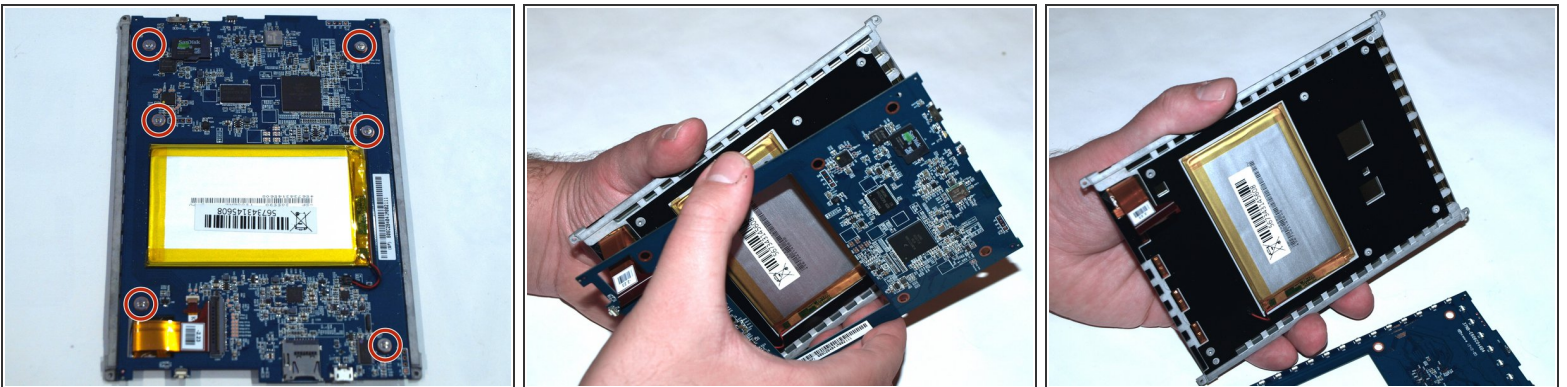
- Gently open the Zero Insertion Force (ZIF) connector holding in the display cable.
- You may find it easier to pry it open with your spudger.
- i** The connector is hinged, and opens upwards. The hinge is on the right-hand side, so you should pry on the left-hand side.
- Once the connector is open, gently pull the cable to the left to slide it out.

Step 5 — Disconnect the second display cable



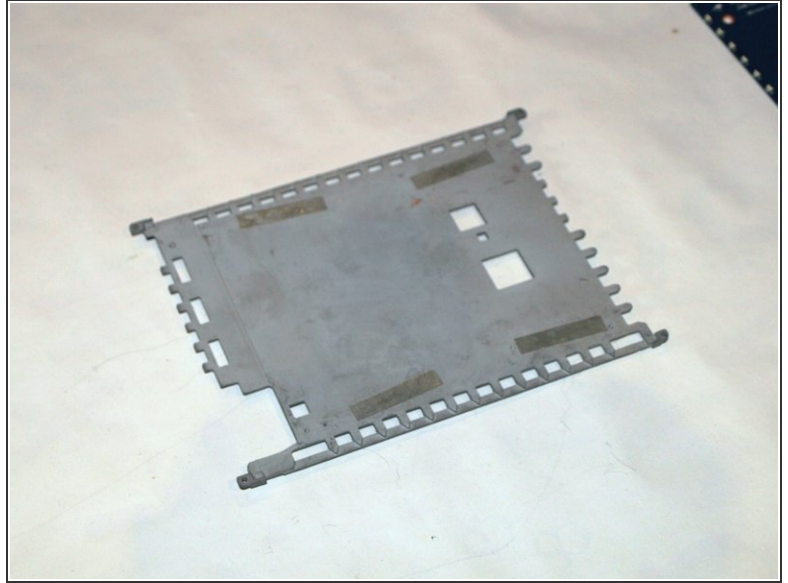
- Gently open the second, smaller Zero Insertion Force connector by prying up the brown pressure-clip from the bottom.
- Slide the cable down to disconnect it.
- On the back of the display cable, you will find the full model number of your display, which you should use when searching for a replacement to ensure you get the correct part.

Step 6 — Remove the motherboard





- Using a Phillips #000 screwdriver, remove the 6 screws holding the display to the motherboard.
- Separate the board from the display assembly.

Step 7 — Separate the display from the frame

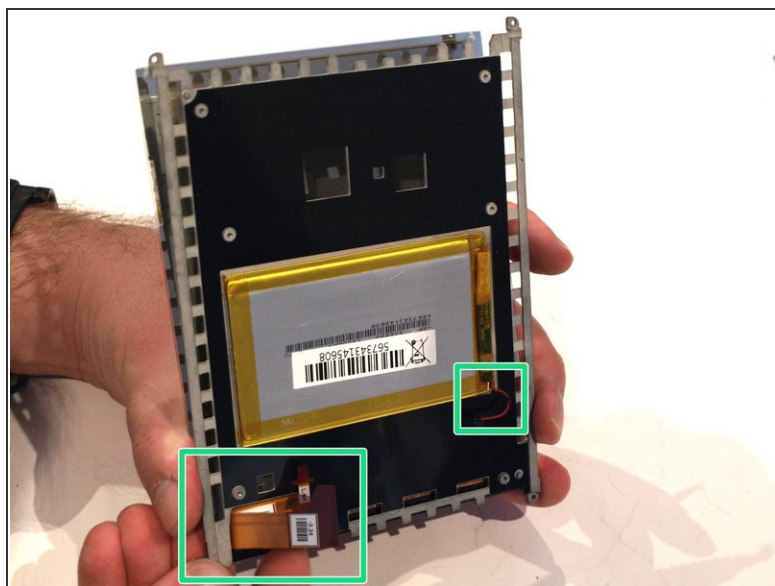
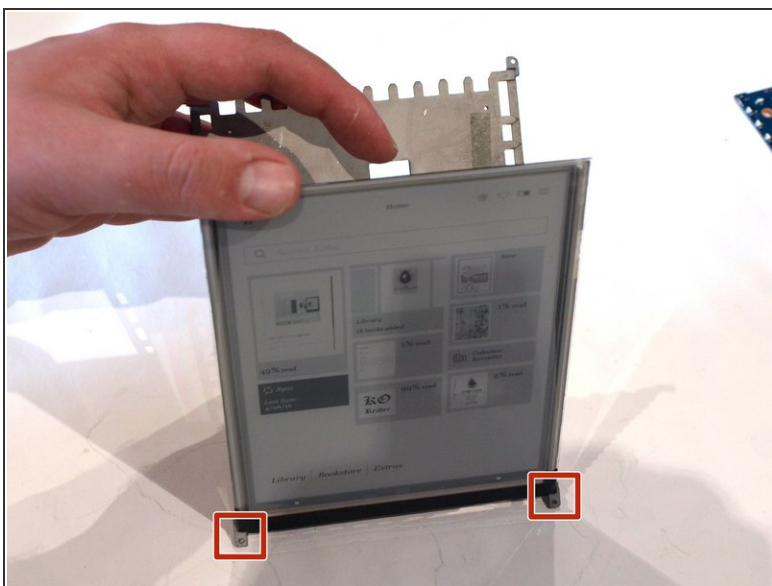


- The glass backing of the display is secured to the metal frame with adhesive strips. Slowly and gently pry the two apart.

 **Note:** it is very difficult to do this without breaking the glass. Go slowly and don't apply a lot of force.

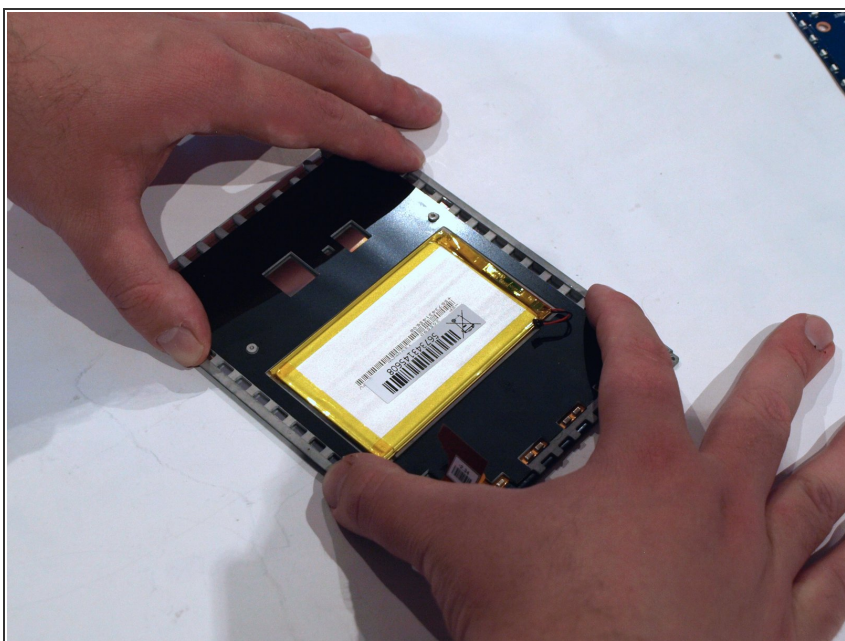
-  If you break the glass, make sure you have cleared away all pieces of it before attempting to install the new display.

Step 8 — Install the new display



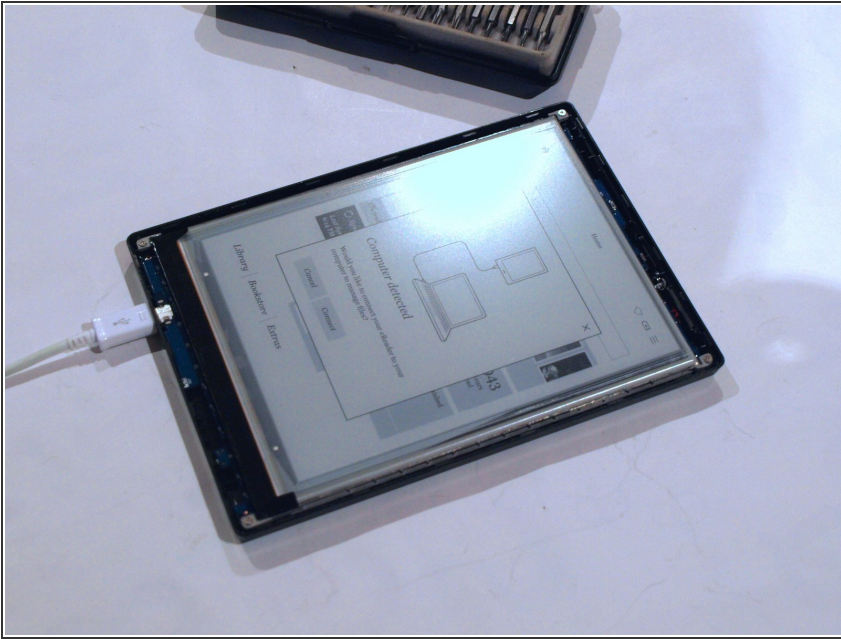
- Fit the screen into the notches at the base of the frame to ensure it is correctly aligned.
 - Feed the display and power cables through the cutouts in the frame.
- i** If you replace the display immediately after removing the old one, you should be able to re-use the existing adhesive.

Step 9 — Press the display into place



- Carefully align the screen with the frame and press it in to place.
 - Apply gentle, even pressure for 5-10 minutes to adhere the screen in place.
- !** Be careful not to pinch the display cable between the display and frame.

Step 10 — Reassembly



- Perform the above steps in reverse to reassemble the device
- Once you have reconnected the display and power cables, and screwed the motherboard back in place, you can turn the device on to confirm the display is connected properly and working.
- ⓘ Note that it will not respond to touch until the front bezel is reinstalled.
- ⚠ Be careful of bending the display when reassembling it. It is very fragile and easily broken.

To reassemble your device, follow these instructions in reverse order.