



# Kodak EasyShare CD82 Lens Assembly Replacement

Step by step instructions to remove and replace the lens of the Kodak EasyShare CD82 digital camera.

Written By: oldturkey03



# INTRODUCTION

Use this guide to remove and replace a dysfunctional lens on the Kodak EasyShare CD82 digital camera.



## TOOLS:

- [Phillips #00 Screwdriver](#) (1)
- [iFixit Opening Tools](#) (1)
- [Soldering Iron](#) (1)



## PARTS:

- [Replacement Lens](#) (1)

## Step 1 — Lens Assembly



- Remove the batteries and the memory card from the device.
- Remove the two screws located at the bottom of the camera.

## Step 2



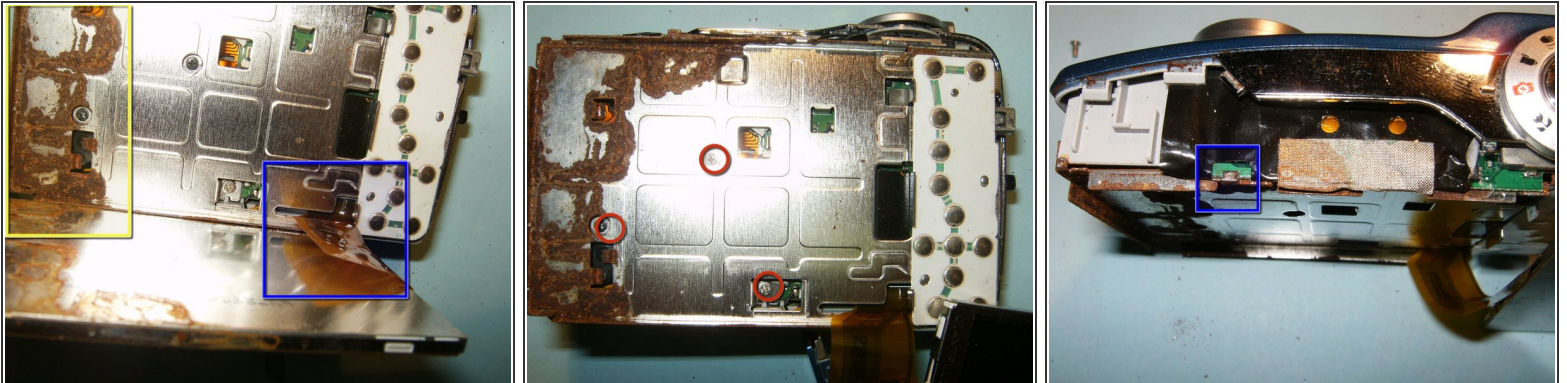
- Remove the two screws on the side of the device, to left of the camera lens.
- Remove the two screws on side of the device, to the right of the camera lens.
- Pry the casing apart at the seams, starting at the battery compartment.

## Step 3



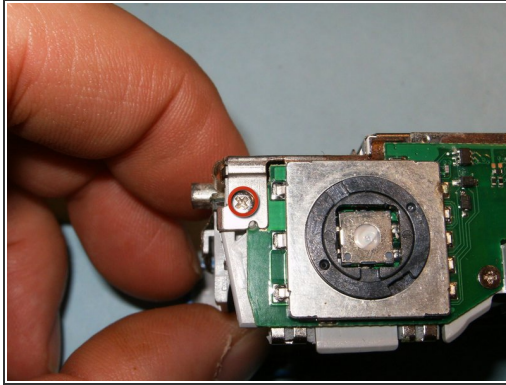
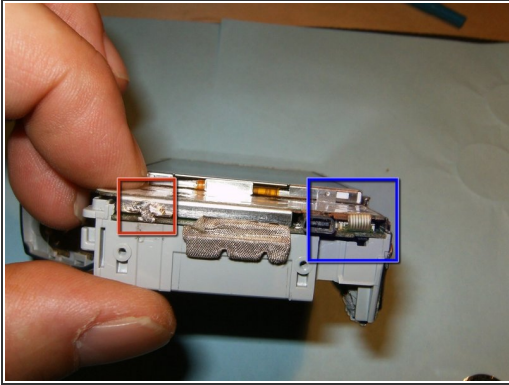
- Remove the front casing from the mid-frame, first.
- Continue to remove the back casing from the mid-frame.
- Do not remove the LCD screen from the device once it becomes visible.

## Step 4



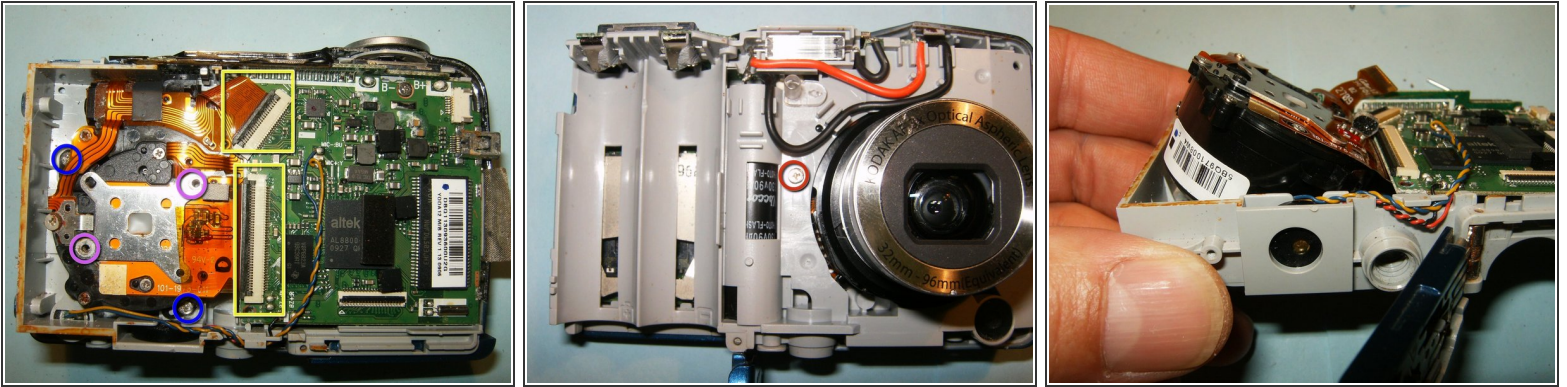
- Flip the LCD screen out of the holder from the top to reveal ribbon cable.
  - This camera had some obvious water damage..
- Remove the three screws from the LCD holder
- Dislodge the LCD screen holder from the circuit board connector.

## Step 5



- Disconnect the logic board from the frame on the right side of the device.
- Remove the small ribbon cable, connecting the button board to the logic board, with small pair of tweezers or hemostat.
- Remove the screw on the top right side of the device connecting the LCD screen holder to the midframe.
- Move the black clip into the upward position to disconnect the cable.
- You will now be able to remove the LCD screen and its holder from the device.

## Step 6



- Flip the black clips of the connectors into the opposite direction. Remove the lens and CCD cable.
- Remove the two screws securing the lens to the midframe.
- These are missing screws for the CCD sensor, lost in a previous dismantling.
- Remove the single screw securing the lens to the mid-frame. The lens will now be loose.
- Push the lens out of the frame in an angular direction, and remove.

## Step 7



- Insert the new lens the same way it was removed.
- Clean and reassemble the camera.

To reassemble your device, follow these instructions in reverse order.